

Eureka Express

Vol XLVII No. 3 Circ 300

APRIL 2026

www.eurekaexpress.co.nz

editor@eurekaexpress.co.nz



Business Directory – Kindly Sponsored by Waikato Sheds

Eureka Express Committee, thank all who sponsor pages and who advertise with us. We appreciate your continued support, without which, we couldn't continue to produce the express for our locals.

Agricultural Contractors

Computerised Bulk Spreader

Dig it Earth Work

G & M Fencing

JC L Jackson Contracting

Wallings Contracting

Tractor Wizards Ltd – Roan Lilford

Builders:

Billings Builders Ltd

Electrician:

J P Electrics – James Palmer

Hair Design:

Hairfields – Sharon Laurent 

Garage & Workshop:

Gull Eureka – Colin

Jewellery:

Local Boutique Jeweller

Justice of the Peace:

Kevin Deane JP

Land Agents: Harcourts – Kevin Deane

Lawns & Gardens:

Lawn Mowing & Gardens – Alex & Sharyn
MacDonald

Easy Stake – Plant Support – Simon

Pre School & Schools

Motumaoho School

Pukeko Pre –School Tauwhare

Tauwhare School

Newstead Country School

Pumps

Ross Pumps – Daren Ross

Text & Email

CTAS reminders by Text & Email

Veterinary Services

Newstead Veterinary Services

Waikato Shed Company

Sheds, Stables, Garages, Lifestyles, Rural,
Industrial, Sleepouts, & much more

AED Defibrillator



**AED A defibrillator is available at
Eureka Hall. To access this you ring
111 for ambulance and they will give
you the access code**

**Please refer to the individual
advertisements for further
Information**

EDITORS REPORT 2026

Sadly, this will be my last report for the Express committee and as Editor. Not knowing how to start it I started thinking about the history of the Express and what part I have played in it over the last almost 20 years.

I joined the committee in 2006 and have really enjoyed being part of the paper and the continuation of such an icon for the community. It is very rare now that small communities such as ours has a paper or even any kind of community newsletter. It is a fabulous way of keeping the community spirit alive, even in this age of social media and everything electronic. My early days of the committee saw some very heated meetings but also we had some fun times, great get togethers and most importantly of all I got to meet people in the community and make valuable friends.

Printing had progressed to a printer, and articles were written by computer, not like the first few years when a gestetner was used and artwork was hand drawn. I have loved looking over the old issues, not only to see the progress, but to have a good laugh and learn how the community was 45 years ago. Yes, the Express has been printed for 46 years now so close to 50 years, half a century, and all thanks to the people past and present. Milestones, deaths, births, special events, historical events, great recipes, stories, and editorials, and even some sharing of some amazing holidays people went on. All these the content, the information, the sharing have all made up and been instrumental in the continuation of the Express.

I started my contributions by writing the Ladies a Plate page for a couple of years, and then became the Treasurer for 9 years, and eventually moving up to be the Editor. I have seen many changes in the committee members. Some have moved on, some have passed on, and some are still on the committee. It has been a pleasure to have worked with you all.

It takes a village to keep something like the Express alive. It is not only the committee, but also the volunteers, article writers, advertisers and sponsors.

The current committee, Linda, you have been amazing over the last year in my absence, stepping up to get the edition ready for print, taking the technology a bit further and working out we can print direct off a USB. You are also a life saver when it comes to arranging or rearranging articles, so they are suitable to print.

Heather, you have started up new articles of information, you assist Linda, always turn up on printing day.

Lin, you chase down the community and find someone to write an editorial. Not an easy task, but you always find someone,

Sharon, you have gone to different places and got articles, places like Matangi Diary, your yummy recipes and gardening tips I always look forward to checking out. Not that I am much of a gardener.

Jill, not always active on the committee lately, but we know you are there with advice or recommendations.

Glenys, you have the hardest job, the Treasurer. You keep the books in order, a big task in a busy life. Then there are all of the volunteers, workers behind the scene, our delivery people, some I haven't even met. Natalie for keeping the phone list up to date, Michelle for our website, email, and any technical advice we need regarding any of this.

Gail and Lorraine, for helping on printing day. Always good to catch up with you.

Our sponsor Waikato sheds. Thank you so much for printing our front page in colour and your contribution of the back page. What a difference it has made to our monthly issues. The covers really stand out.

Our advertisers, without your advertising we wouldn't have a paper. You are invaluable to us.

Eureka motors, your support in so many ways, allowing us to drop the bags off on printing day for the delivery people to collect, for collecting funds from the jar on your counter, and countless other ways over the years.

I know the current committee will continue to produce an interesting issue each month and I look forward to reading them.

Thank you all for your support and I wish you and the express well for the future.

Gayle Orr

TRIBUTE TO OUR ANZACS - EUREKA CENOTAPH



The Eureka Cenotaph stands tall, a focal point, at the crossroads of what was once a busy farming community. Like, many rural NZ memorials, it was erected to ensure the local community could honour their local heroes, of World War 1 and World War 2. These were often those from families who attended local schools or worked in the surrounding rural area.

The cenotaph, consists of a simple concrete pillar/shaft, featuring inscribed plaques with the names of the district's fallen from the First and Second World Wars and subsequent wars since.

The cenotaph was unveiled on Sunday June 26 1927(100 years next year) in memory of the men of Eureka. Many of those who lost their lives in both wars have extended family in Eureka today.

This cenotaph has since seen, the installation of a flag pole, both of which are now a focus for our local ANZAC Day services and commemoration of fallen service members. Many of whom have family or extended family in the area today and those who are presently serving.

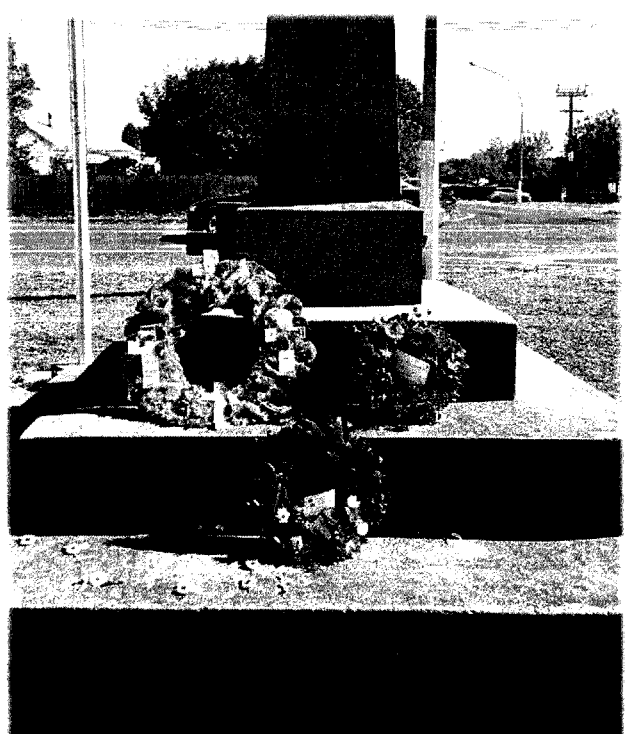
We will remember them.



Anzac Day

Thank you to those who attended our Anzac Day service on Saturday. It was great to see so many, old and new faces especially the children from Tauwhare School who laid a wreath. Our gathering grows each year a compliment to Gayle and Lionel who have planned and hosted the ceremony for the last seven years.

Sadly: we must acknowledge that this was their last time, and we wish them well in their travels. May they be blessed with health and time to work on their bucket list. You will be greatly missed. Bless you both.



Hall Update

You may recall that in January 2025 Rukus Productions filmed our community of Eureka for a documentary series called "Counting the Beat." Eureka was chosen because it was considered the safest place in New Zealand on several indicators, including the risk of natural disaster and crime. Just 15 minutes down the road, Hamilton had the highest crime rate per capita. The documentary series aired in about October.

Having boasted that statistic and hosted the film crew at a Square Dance, the hall was broken into in June, causing more damage than loss of items. Then in October all 4 outdoor units for the heat pumps were stolen. These units have now been replaced and caged. In the hottest period of early January, bookings were temporarily suspended in case the hall was too hot without cooling. Despite this blip in the crime stats, Eureka is still a lovely rural place to live.

Twice a classroom from the school was parked in the hall carpark without permission. It was just good luck that there were no bookings of the hall when it occurred.

Both the hall burglaries and the unpermitted parking, will prompt further security measures. If something looks out of the ordinary please take another look and contact someone on the committee if in doubt.

Eureka is fortunate to have a donated bus shelter outside the hall. For all users' enjoyment we need to keep it looked after. Please take your coffee cups and cans with you on the bus. If you dropped 6 tee shirts in the shelter I have taken them home and if unclaimed they will be donated.

The hall continues to be used by all sorts of groups and individuals for a range of activities. If you would like to book it please contact Kathryn Schicker on eurekahallwaikato@gmail.com. For other hall matters I can be contacted on **0221238220**.

Regards Susan

A Piano for Our Hall

Our hall has been gifted a piano — a wonderful addition to the space and a true community effort.

In December last year, one of our regular user groups, Eurythmy Aotearoa, located a suitable piano and organised its transport and setup. A huge thank you to Eddie for lending his horse float, and to all the young (and slightly older) men from the Meredith and Blackler families and their friends who helped with the heavy lifting.

From the donors: "We are happy the piano has a new home where it will continue to be enjoyed. We inherited the piano from Mike's dad, a talented pianist. He had originally been gifted it by the community, so it feels right to gift it back to the community. It worked out perfectly that the music shop put us in touch with you. Ngā mihi, Mike and Judi Randall."

We're delighted to have it here and hope it will continue to be well cared for so it can bring enjoyment for years to come.

Alison Meredith



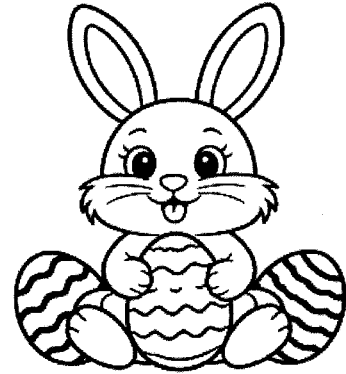
EASTER COLOURING COMPETITION

2026 RESULTS

Preschool:

- 1st Indie van de Pas
- 2nd Zara Bartlett
- 3rd Anna-Jane Anthony Cote

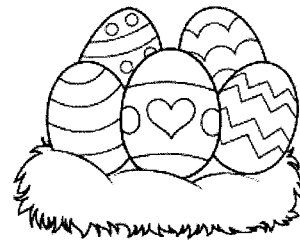
Commended: Hilary Taylor, Oscar Taylor



Juniors:

- 1st Isla van de Pas
- 2nd Libby Roche
- 3rd India Callis

Commended: Olivia Forsyth, Kayleigh Thompson, Diesel Roskam
Baylee Rounthwaite, Chloe Bartlett,



Intermediate:

- 1st Annabell Boe-Stevens
- 2nd Ava Thompson
- 3rd Una van de Pas

Commended: Paul Czyz, Caleb Wallace,
Ella Bartlett, Hazel Rounthwaite, Ashton Jane, Gia Redgate

Seniors:

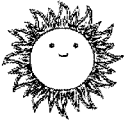
- 1st Dinah van de Pas
- 2nd Charli Carroll
- 3rd Miller Sampson



The judges were once again very impressed with the high standard of the lovely entries this year – making it very difficult to decide the winners. Congratulations and thank you to all who entered. We hope you enjoyed your prizes and seeing your colouring displayed at Gull Eureka over the Easter week.

Prizes kindly donated by Linda Journeaux





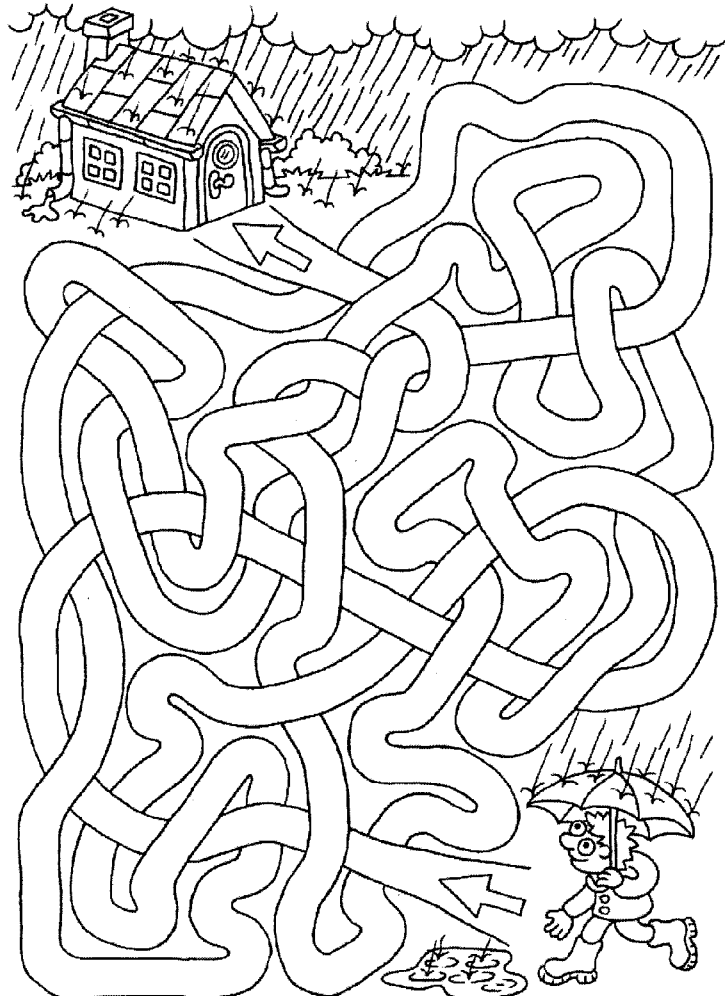
WEATHER



B R S D R O P N E L W C
 K O Z N F W I R H O T L
 W G U R O J S E C Y A D
 E V C I S P U L F B M R
 S N O W J A N D W T H E
 Z B L G R F S Q I K Y P
 T U D M X C H A N C E O
 C P K B O Z I F D S L R
 O J M H E S N Y G R U T
 O W E A T H E R L A S B
 L C R I F M T H P I D G
 D A G L S U K B L N E R



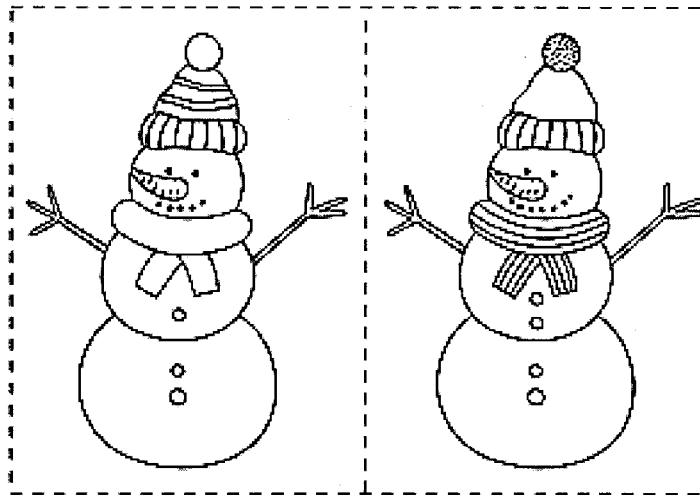
CHANCE	HAIL	SNOW
COLD	HOT	SUNSHINE
COOL	RAIN	WEATHER
DROP	REPORT	WIND



- DOULC _____
- LHIA _____
- UNSSIHNE _____
- GFO _____
- HNDERUT _____
- NAIR _____
- ZDLRBIAZ _____
- DOCL _____
- OFRTS _____
- MRSTO _____
- LTNIGNIGH _____
- DNWI _____
- WNSO _____
- RODODNA _____
- MRWA _____
- RREHCIAUN _____

cloud, hail, sunshine, fog, thunder, rain,
 blizzard, cold, frost, storm, lightning,
 wind, snow, tornado, warm, hurricane

SPOT 5 DIFFERENCES



Pom pom, hat stripes, scarf
 stripes, mouth size, extra button

In September 2024 my mother in law brought around an Easystake and asked if I could make one for her, as the guy who was had had a stroke and didn't make them anymore.

The Easystake had a label sticker attachment and from there I made contact with Mark & Meg Bachus, after a couple of coffees and a long chat (Mark can talk ☺) I offered to buy "Easystake by Machus" (their intellectual property, jigs , tools and remaining stock), as I had decided that I wanted to explore manufacturing and marketing the Easystake Range. While being a semi retired mechanical engineer, the manufacturing side of the products wasn't an issue, but I had never done direct public sales before so marketing was and still is an ongoing development.

So I made some Easystakes (Black Etched option was developed as I wasn't going to make enough to get them galvanized), and along with some bloom stands I went to the Kaipaki Market, in October 24, and have kept going to local markets.

My regular market cycle is Morrinsville, Matamata, Cambridge, TA and Pironga. I also go to the Plant Extravaganza, held at Claudelands Event Centre and I have completed the home shows at Waikato , Rotorua, Taupo and Napier.

One of the benefits of being in a small market is that you get to talk to fellow marketers and find that they are happy to pass on ideas and selling tips, and once you start talking to customers you find that they are a great source of ideas for different products.

Gardeners are people who know what they want, and if they can't get it, they will adapt lots of odds and sods to get the same result. When they see items I have for sale and they find out that I actually make them, they are not slow in coming up with what they actually want and if I can make it I do.

The Easy Water Stake and the Lantern Stake are direct examples of such conversations.



The water stake followed a conversation with a TA lady , who had had something similar years ago. After a couple of attempts we came up with the final idea and it's proven a popular product over the dryer months.

Emily in Matamata, was chatting with me, and said that she was wanting to use lanterns for her upcoming wedding, instead of flowers . A couple of sketches later and the lantern stake was born. She had five in total for her event, In cascading heights and I'm sure it looked great on the day.

What is an Easystake ? is a popular question.

As gardeners get older, the need to use stakes to support plant growth doesn't stop, but the hammer gets a lot heavier to use.

The Easystake is made from galvanized steel, simply designed , light weight and will last forever.

Once positioned in place with your foot, it provides a solid support to tie up your plants. If you need some height, a traditional wooden stake will slot in place, thru the two rings, and just like that you have a stake ready to go to work. The Easystake is also the start point for other things

When used together you can build shade or frost cloth covers

One Easystake will hold up the average small beach umbrella.

Three Easystakes, will hold up a temporary flagpole.

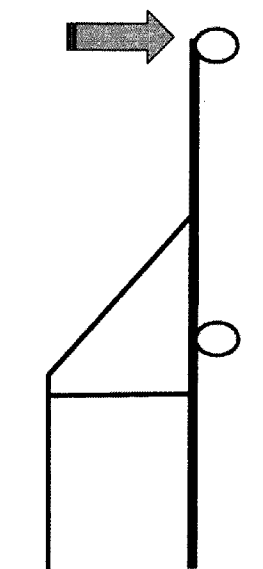
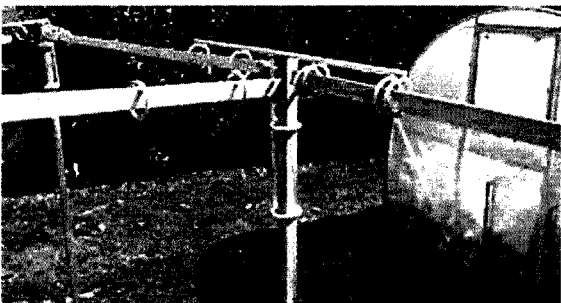
Three Easystakes, with the larger ring (available on request) will hold the 3 meter sun shade umbrellas for your next picnic.

You can check out the full "Easystake by Machus" range online at

easystake.co.nz There is also the facebook page "Easy Stake by Machus" where I have more photos and videos you can see and you can follow me to get updates about which market I am at.

You can phone me on 021 08063432, or pop into 89A Hinton Road and say Hi.

Thanks Simon



BOOTLEG BREWERY

IN MAY



For the first time since Bootleg opened its bar at the Old Dairy Factory in Matangi, **ALL OF THE TAPS IN THE BAR ARE SERVING PRODUCTS BREWED IN THE BREWERY IN MATANGI.**

This is a milestone for a couple of reasons.

- Bootleg makes a complete range of beers, from stouts and Belgians, to a lager that suits the "Waikato" drinkers, pilsners, and a whole range of ales.
- We're now playing around with our own cidery and the flavours that one can put in them.

There are not many breweries in NZ that make such a wide range of award winning beers, both 'crafty' and user-friendly competition for the monopolistic mainstream behemoths.

A couple of our mates, Bryan and Frog have just taken part in a 'bangers' rally through NZ. We gave them a few beers to help them on their way and it seems to have worked - they made it to Bluff in their very old Holden and they raised a lot of dollars for Multiple Sclerosis along the way. And Bootleg got exposed all the way!

Now that the law has changed regarding Public Holiday opening, we're normally open. So we will be open on ANZAC Day. That includes the Public Holiday on Monday 27th April. And the Food Caravan will Be Smokin' Oak Barbecue - the National Award winning caterers.. We'll see you then..

CATERERS COMING UP IN MAY

Mon 27 th	SMOKIN' OAK BARBECUE
Apr	Suzuya Japanese
Thu 30 th	All Around The World
Fri 1 st	Loco Mexicano
Sat 2 nd	Kaliméra Pizzas
Sun 3 rd	Suzuya Japanese
Thu 7 th	All Around The World
Fri 8 th	Sweet and Sassy Smokehouse
Sat 9 th	Kaliméra Pizzas
Sun 10 th	Suzuya Japanese
Thu 14 th	Kai On Wheels Big Burgers
Fri 15 th	Sweet and Sassy Smokehouse
Sat 16 th	Kaliméra Pizzas
Sun 17 th	Suzuya Japanese
Thu 21 st	Sawadee Thai
Fri 22 nd	All Around The World
Sat 23 rd	Kaliméra Pizzas
Sun 24 th	Suzuya Japanese
Thu 28 th	Sawadee Thai
Fri 29 th	Sweet & Sassy Smokehouse
Sat 30 th	Kaliméra Pizzas
Sun 31 st	



The food caterers are happy to cater to anyone while the brewery is open, and the food can be packed for takeaways

Discover the Joy of movement with Nia in Matangi

Looking for a fun, uplifting way to stay active and connect with your community? Since 2019 Deidre & Lisa have been running Nia classes in the Matangi Community Hall, offering a unique blend of movement, music, and mindfulness for people of all ages and fitness levels.

Nia is more than just a workout—it's a holistic fitness practice that combines elements of dance, martial arts, and relaxation techniques. Choreographed to inspiring music, each class encourages you to move in a way that feels natural to your body, helping to improve strength, flexibility, balance, and overall wellbeing.

Whether you're a seasoned exerciser or just starting your fitness journey, Nia provides a welcoming, non-judgmental environment where you can move at your own pace and rediscover the joy of physical activity.

Classes are Monday and Thursday at 6-7pm in the Matangi Community Hall. Look out for the flag! Come along, bring a friend, and experience the energising and restorative benefits of Nia for yourself. Also a fabulous way to experience Nia would also be to come along to our Pink Ribbon Breast Cancer fundraiser, a 'Nia Jam' with six teachers from across the north island coming together to lead a class. Saturday 23rd May, 10.30am. All proceeds donated.

Still not sure, here's what some of our students have said...

"Before Nia I had very little confidence in myself and a body wracked with pain, now after an Nia session I can move so much easier and find I can tackle day to day stresses much better."

"It was the best feeling for a long time the evening I plucked up the courage to push that door open and start a new way of life, "my life" at last, should have done it years ago."

"I've found something that ticks all the boxes for me. Exercise, stretching, mindfulness and most importantly good fun with great people. I'm a convert!! It's taken 50+ years to find. Big thank you from me."



Nia Here ... in Matangi
and Hamilton



Nia is a low impact barefoot cardio fitness experience, danced in 'your body's way' with choreography set to soul stirring music... for EVERYbody, mind, spirit, emotion. Drawing on nine movement forms from the DANCE arts; MARTIAL arts & HEALING arts (yoga) No 'experience' necessary!

*Move
Dance
Joy*

Come and join us!

*Mondays & Thursdays
6pm Classic Nia
Matangi Community Hall*

*Tuesdays 9.30am Classic Nia
Wesley Hall, Hamilton*

*Tuesdays 11am Move to Heal
(Gentle Nia with Deidre)
Wesley Hall, Fairfield, Hamilton*

EVERY-BODY welcome



**New
to Nia special
\$50 - 5 weeks
unlimited classes!**

Deidre & Lisa are Brown Belt Certified
Nia Teachers
and Nia Moving to Heal trained
Email: niaherewithus@gmail.com
<https://facebook.com/NiaHereWithUs>
www.nianow.com

*Regularly
Classes \$10-\$15
with pass
\$20 Casual



nia
NIA Pink Ribbon Jam!
Breast Cancer Fundraiser!
Saturday 23rd May • 10.30am
Matangi Hall

Join us for a joyful dance experience to support a great cause!

Nia is a holistic movement practice that blends dance, martial arts, and healing arts to uplift body, mind, and spirit

\$25 Registration
Email Lisa & Deidre to register:
niaherewithus@gmail.com

Move for a Cause, Dance for a Cure!



Recipes

Feijoa Facts:

- Also known as pineapple guava and has origins in southern Brazil
- The fruits drop when ripe
- The flowers can be eaten, and are great in mixed salads
- Can be used to marinate tough meat to tenderise it
- Feijoas contain high levels of vitamin C and one feijoa will provide a quarter of an adults recommended daily fibre requirements
- Good source of dietary fibre, contain antioxidants and low in calories
- Support digestion and immune health
- Pollinated by birds and insects

Free feijoas are almost a cultural event in NZ (people giving away bags from their trees.)

Feijoa and Coconut Muffins

Feijoa's tang pairs beautifully with coconut sweetness

1 cup mashed feijoa pulp
½ cup sugar
1 egg
75g melted butter

1 ½ cups flour (Gluten free works)
½ desiccated coconut
½ milk
1 tsp baking powder

Mix dry ingredients in one bowl, wet in another.
Combine gently (don't over mix)
Spoon into muffin tins
Bake at 180C for -20 minutes

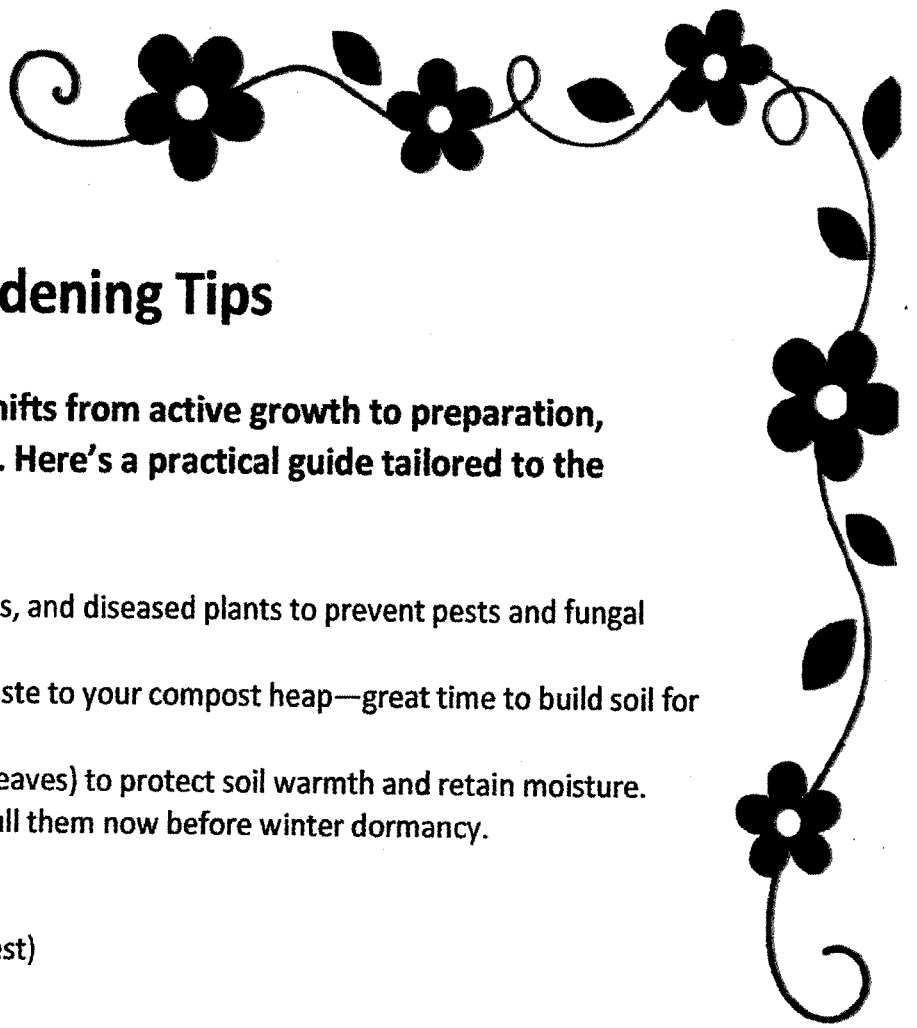
Feijoa Crumble

10 feijoas peeled and chopped into chunks
½ cup rolled oats
50 g sliced almonds

3 tablespoons Brown sugar
1 teaspoon ground ginger

Preheat oven to 180, Arrange Feijoas in a baking dish. Combine all other ingredients in a bowl so they are well mixed sprinkle the topping over the feijoas, give the top a spray of oil and bake in oven until the crumble looks crunchy on top and the sugar is caramelised (about 20 minutes Serve with a scoop of ice-cream or yoghurt (serves 4)

Recipe kindly shared by my neighbour.



Gardening Tips

May is late autumn, so gardening shifts from active growth to preparation, protection, and planning for winter. Here's a practical guide tailored to the season:

General Garden Tasks

Clean up: Remove spent crops, dead leaves, and diseased plants to prevent pests and fungal issues.

Compost: Add fallen leaves and garden waste to your compost heap—great time to build soil for spring.

Mulch heavily: Apply mulch (straw, bark, leaves) to protect soil warmth and retain moisture.

Weed control: Weeds still grow slowly—pull them now before winter dormancy.

What to Plant (cool-season crops)

Garlic (best planted now for summer harvest)

Broad beans

Peas (in milder regions)

Spinach, silverbeet and kale

Winter lettuce

Onions (seedlings or sets)

Care Tips

Protect seedlings from frost using cloches or frost cloth.

Reduce watering—cooler weather means less evaporation.

Add compost or well-rotted manure to beds.

Flower Garden

Plant spring bulbs (tulips, daffodils, hyacinths).

Divide and replant perennials.

Cut back frost-sensitive plants.

Plant hardy annuals like pansies and violas for winter colour.

Trees & Shrubs

Ideal time to plant deciduous trees and roses (bare-root season begins).

Prune dead or diseased wood (avoid heavy pruning of frost-tender plants).

Stake young trees before winter winds arrive.

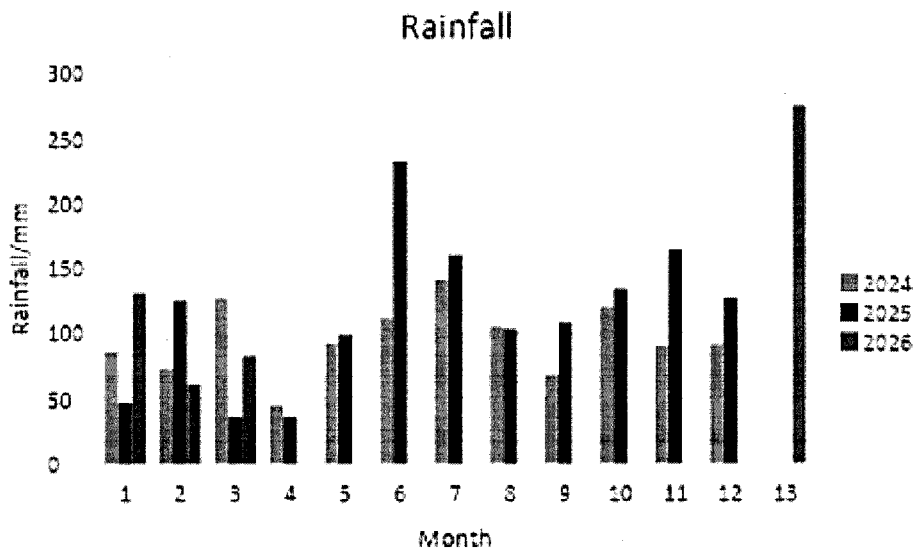
Fruit Garden

Plant fruit trees (apple, pear, plum) while dormant.

Prune established fruit trees (except stone fruit in wetter regions—prune those in summer instead)

Clean up fallen fruit to prevent disease

Weather for March	2026	2025
Rainfall total	83 mm	36 mm
Rain Total for year	275 mm	208.5 mm
Rainy days	3	4
Most daily rainfall	83 mm	13 mm
Temp high	27.6 °C	23.8°C
Temp low	4 °C	3°C



Measure	Jan 2026	Jan 2025	What stands out
Rainfall total	83 mm	36 mm	More than double 2025, but less than 2024
Rain total for year to date	275 mm	208.5 mm	Running ahead of last year, but similar to 2024
Rainy days	3	4	Similar wet days overall
Most daily rainfall	83 mm	13 mm	One very heavy rain event shaped the month
Temp high	27.6°C	23.8°C	Noticeably warmer peak
Temp low	4°C	3°C	Little difference overnight

March weather: one month, one deluge, one big contrast

March 2026 brought more than double last year's rainfall, fewer rainy days, and a much wetter single-day downpour than anything seen in March 2025.

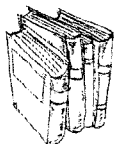
At a glance

- **Rainfall total:** 83 mm vs 36 mm last year
- **Rainy days:** 3 vs 4
- **Wettest day:** 83 mm vs 13 mm
- **Highest temperature:** 27.6°C vs 23.8°C
- **Lowest temperature:** 4°C vs 3°C

Library Box Reminder:

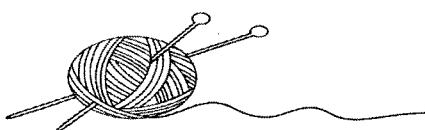
With the winter months ahead, a good time to catch up on reading, remember to visit our little post box library in front of hall door. We try to replenish these on a weekly basis. Please feel free to pop in change your books, or simply borrow one, or leave a few books.

If you have any spare books, feel free to drop in my letter box 101 Hooper Rd.



Yarn and Yak Club - Hillcrest Library at Hamilton Gardens every Tuesday 1:30 to 3

Feel free to come along and join a group of very friendly ladies and Library staff, enjoying each others company, over a cuppa and biscuit. Lots of chat and laughter as we share our projects and advice on our various knitting, crochet, cross stitch, tapestry projects



JIGSAW

Be on the look out in stores for this wonderful jigsaw designed by artist Elena Brambilla, one of our local ladies. Her 1000 piece puzzle, called Birds and Blooms, shows a stunning image of native fauna and flora. It can be found in Whitcoulls now and will soon be available in Briscoes.



bull

pūru



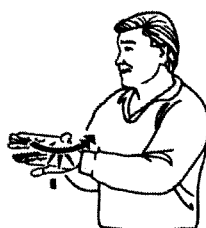
butterfly

pūrerehua



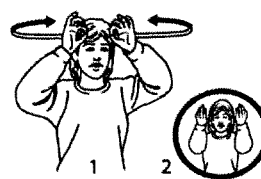
cat

ngeru, poti



cat, pet

ngeru, mōkai



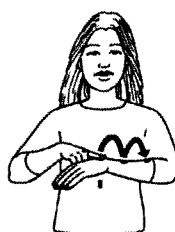
cow

kau



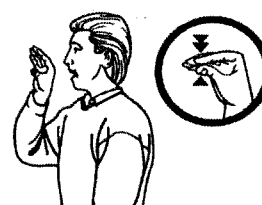
crayfish

kōura



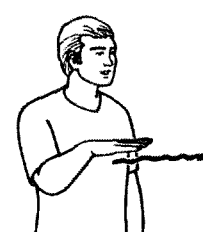
dinosaur

mokonui



duck

rakiraki, pāpera



flounder

pātiki



RESPECT - RESILIENCE - RESPONSIBILITY

TAUWHARE SCHOOL

Term 1 – April 2026

WWW.TAUWHARE.SCHOOL.NZ



TOP NEWS

Mr and Miss Elliott Take Over

Mr and Miss Elliott stepped into the roles of Principal and Deputy Principal for the day, taking the lead of the school on the last day of Term One. Throughout the day they made class visits, helped oversee school routines, changed some playground rules and made exciting decisions about school operations. A major initiative was the inclusion of a bouncy castle at the end of the for the whole school to enjoy. Their leadership brought a positive energy to the school, all done with incredible attitudes and smiles. Mr Elliotts mug states "Genius at Work"



Garden to Table

Our Garden to Table initiative has begun this year, giving students the opportunity to learn in the garden, grow fresh produce, and connect their learning to real-life food experiences. Students are developing practical gardening skills, discovering where food comes from, and working together to prepare and share healthy dishes. It's been a fantastic start, with lots of enthusiasm as students get their hands dirty and learn through doing. To the left, Dustin and Fletcher prepare the food. Teagan and Nikki are finishing the process, preparing delicious kai to consumed after months of hard work.



STEP-IN – We Welcome you to Tauwhare

Make contact with admin@tauwhare.school.nz for all your pre-enrolment information and our invitation to start your

schooling journey with our termly Step-In Programme.



Miss Elliot + Harper, Milla and Isobel in the bouncy castle.

STEP IN PROGRAMME
Welcome, 4 Year Olds!
... Starting Tauwhare School Soon?

What a fun month we have had here at Pukeko Preschool!

We have celebrated lots of birthdays and enjoyed fun events such as the colour run, dress-up day, smoothie-making day, and even a colouring competition. Our tamariki are loving the outdoor environment at the moment, even though it is starting to get a bit chilly. Brrrrr!

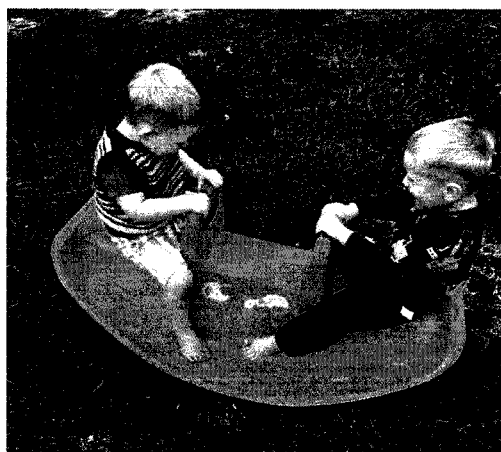


They have also loved meeting new friends who have started recently, along with two new kaiako. Welcome to the Pukeko whānau team!

A huge thank you to our superstar kaiako, who go above and beyond for our tamariki every day. Without them, we are nothing.

Don't forget, we have a special enrolment deal at the moment. Enrol and start before 31 May to receive your first month free.

Get in touch with us at admin@pukekopreschool.org.nz for more information.



Nga mihi,
Alea Mosen
Curriculum Lead
Pukeko Country Preschool

Tamahere-Woodlands Councillors' update April 2026

Waikato District Council confirms below inflation general rate increase for 2026/27

Waikato District Council approved a below inflation general rate increase of 2.8% at a Draft Annual Plan meeting in April. This will result in an average rate increase of 3.79% across the District when targeted rates are included, but individual rate increases will vary according to property values and the services received, such as a weekly rubbish collection.

Water increases are under half of what was forecast. For properties connected to water services, there is a \$31.50 fixed charge increase for drinking water and a \$110.72 fixed charge increase for wastewater for 2026/27. These will be charged from 1 July on behalf of IAWAI, the Waters CCO owned with Hamilton City Council, and will appear alongside other relevant fixed targeted charges in invoices.

Long Term Plan preparation

As part of its preparation for developing the Long Term Plan 2027-37 the Council has reviewed the latest district growth projections. A high growth scenario indicates Waikato District will more than double in population from about 88,000 in 2023 (about 90,000 now) to 220,000 by 2070. Hamilton is expected to grow from 184,000 to over 400,000 in the same time period. Growth in Waipa and Matamata Piako is projected to be more moderate.

District Plan

With only three appeals still to be resolved on the Waikato District Plan – Operative in Part (WDP-OiP), work is now proceeding on two changes to improve the efficiency and clarity of the District Plan following its review. One covers earthworks and the other covers a list of minor technical corrections. To do this work, Waikato District Council has obtained a Ministerial exemption from the nation-wide 'plan stop' which is in force until 31 December 2027 while the RMA is being replaced. Once drawn up, both plan changes are expected to be publicly notified.

Bylaws update

The Council has been examining how to keep reserves and beaches safe and enjoyable for everyone. After reviewing 1,523 responses to a survey held last year to gather your views on access to reserves and beaches by vehicles, motorbikes and horse-riding, the Council has decided to address the issues by amending the current Public Places and Traffic Bylaws. Changes to the bylaws are expected to be consulted on later this year.

Dog registration – improving efficiency and making it easier

The Council will issue lifetime metal dog tags from 1 July this year and use a paperless system to record annual registration fees. The purpose is to reduce plastic waste, postage costs, and to make dog registration easier. From June, dog registrations can be paid through Afterpay providing a practical alternative for customers who cannot pay upfront.

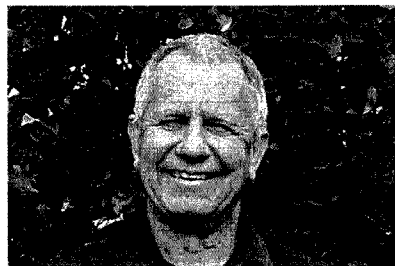
Local news:

- Tauwhare Pa playground - Work to renew the playground in Kahui Ave is on track for completion on 8 May.
- "Peanutabout" – Work on the SH26/Matangi Rd intersection is due for completion on 19 May
- Newstead Residents' Assn AGM – Noel Smith and Chrissy Ulyatt were elected unopposed as chair and secretary.

Marking ANZAC Day in Tamahere-Woodlands – Gordonton and Eureka

It was a great privilege to lay wreaths on behalf of the Council at the dawn ceremony held at the Gordonton cenotaph and the mid-morning service at the Eureka cenotaph. Let's honour all those who have fought for our peace and security by continuing to work for peace in the world and at home, among Maaori and Pakeha and among the many diverse groups and cultural and religious traditions that have found a home in New Zealand.

Contact your Tamahere-Woodlands Councillors:



Crystal Beavis, mob 0275 957 927, email crystal.beavis@waidc.govt.nz
Mike Keir, mob 027 449 3012, email mike.keir@waidc.govt.nz

Waikato District Council confirms below inflation general rate increase

Waikato District Council approved a below inflation general rate increase of 2.8% and a resulting average rate increase of 3.79% including targeted rates at a Draft Annual Plan meeting yesterday [8 April].

Individual rate increases will vary for ratepayers according to the capital value of property and the specific services they receive such as rubbish collection.

For properties connected to water services, there is a \$31.50 increase for drinking water and a \$110.72 for wastewater for the year– a total fixed charge increase of \$142.22 for 2026/27. This will be charged on behalf of IAWAI, the CCO with Hamilton City Council, from 1 July and will appear alongside other relevant fixed targeted charges in invoices. These water increases are under half of what was forecast.

“Council is acutely aware of how the cost-of-living crisis is affecting our district, now further compounded by rising fuel prices.

“Communities have clearly asked that we focus on increasing affordability and on delivering excellent services for our communities, while operating under constantly changing local and global influences. Any rates increase will impact households; we know this. Council is working hard to keep this down”, Mayor Aksel said.

Understanding your rates

As a district council, our rates are calculated differently to city councils. That is because not all ratepayers have access to the same services such as rubbish collection, water services, pools or community halls. This variation is reflected in individual rates invoices.

What are average rates?

Average rates are calculated from general rates, fixed targeted rates and Uniform Annual General Charge across all properties across the district. The total average rate increase is 3.79% for 2026/27.

General rates

The general rate will be slightly lower than what was expected and consulted in the Long Term Plan, dropping from 3% to 2.8%. It is acknowledged that 0.2% is a small reduction, but significant cost savings had to be made by Council in order to absorb new cost pressures and the \$2.9 million shortfall in waste calculations carried over from the 2025-2034 LTP. General rates are used to fund council activities that benefit all Waikato district ratepayers such as roading. It is calculated on the capital value of properties per \$100,000.

The general rate increase means \$6.17 per \$100,000 or an increase from \$220.40 to \$226.57. For a residential property with a median capital value of \$600,000, the increase is an added \$37.02 per household per year.

A fixed Uniform Annual General Charge is increasing by \$16.46 per property per year to \$564.96. Combined, for a \$600,000 home, ratepayers will pay an increase of \$53.48.

What are targeted rates?

Local communities are charged different targeted rates depending on the services they receive. A ratepayer in Huntly will be charged different targeted rates to a ratepayer in Glen Afton.

There are increases to the fixed targeted rate for rubbish and recycling, and stormwater for 2026/27

Some areas of the district have their own specific rubbish and recycling fixed charges. Raglan and rural pop-up recycling services are an example of this.

The main standard district rubbish and recycling fixed targeted rate will increase by \$23 per year per dwelling to \$303.03. Pre-paid rubbish bag stickers, wheelie bin tags for Tuakau, are still needed on each bag / bin for standard district rubbish collection. There is no increase to the price of stickers and tags.

The urban stormwater fixed targeted rate per property will increase by \$48.04 per year to \$364.68.

What's changed from 2025-2034 LTP?

The only change is the 0.2% reduction to the 3% increase for general rates for 2026/27. Whilst this is a small reduction, significant cost savings had to be made by Council in order to absorb cost pressures and the \$2.9 million shortfall in waste calculations.

All increases mentioned in this release were consulted on in the 2025-2034 LTP.

What's next?

The Annual Plan will be presented to Council in June 2026. It includes forecast financial statements for the relevant year and highlights any variations for the 2025-2034 LTP, such as the reduction in general rates increase as listed above.

The Annual Plan will be adopted by 30 June 2026 together with the rates strike for the upcoming financial year.



161 Morrinsville Road, Hamilton, 3286

Phone: 07 856 4522 Email enquiries@newsteadvets.co.nz

Website: www.newsteadvets.co.nz

Newstead Vets offer a full range of veterinary services for small animals including:

- * Consultations (by appointment only)
- * Soft Tissue and Orthopaedic Surgery
- * Digital Radiography and Ultrasonography
- * NZVA Microchipping Accredited Practice
- * Nutrition and product Advice
- * Rural location with ample parking
- * Referral to Specialists
- * PennHIP Certified
- * Full Laboratory Service
- * Hospitalisation
- * Cremation Service
- * Convenient Online Shop

G&M FENCING

WAIKATO WIDE

For all your rural, lifestyle and residential fencing needs



Contact Mitch

0278418055

gandmfencingnz@gmail.com



Local Boutique Jeweller

DESIGN MANUFACTURE SHOWROOM

- Showroom by appointment only
- Private personal shopping experience
- Repairs and maintenance
- Custom design & manufacturing
- Remodelling old or unworn jewellery
- Unique, one-of-a-kind designs & small collection jewellery
- Independent insurance valuation services
- Wine and cheese shopping experience for small groups



GET IN TOUCH

@erikawatsonjewellery

ERIKAWATSONJEWELLERY

erikawatsonjewellery@gmail.com

Erikawatsonjewellery.com

021 022 49300

Kuranui Road, Motumaoho

LAWNMOWING & GARDENING SERVICES

Professional lawn and garden care services



Alex & Sharyn Macdonald

For free no-obligation quote:

Phone 027 479 7282

or 027 308 6781

E:macdonaldmowing@gmail.com

W:www.lawnandgradenservices.co.nz

Residential—Rural—Commercial
Spraying—Fertilizing—Weeding

HAIRFIELDS

HAIR DESIGN

95 HOOPER ROAD

Sharon Laurent

Full salon facility in Eureka

Total hair care professional

and many years experience

Agent for Nutrimetics

Open Tuesday to Thursday

Late nights Tues/Thurs

Tel. 027 280 5978



Servicing and installation

on all types of pumps

Full water treatment

service available

DAREN ROSS

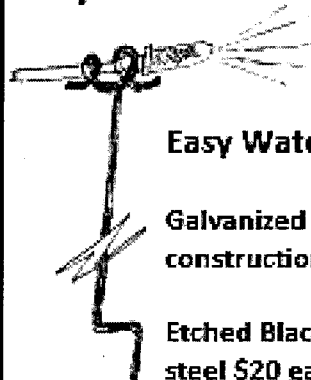
Ph: 824172G

Or 0274 34G 571

Email:

admin@rosspumps.co.nz

Easystake.co.nz



Easy Water Stake

Galvanized steel
construction \$20 ea

Etched Black
steel \$20 ea

Etched & Painted –
Bright Colours \$25 ea

Simon 02108063432

**THIS COULD BE
WHERE YOU
ADVERTISE YOUR
BUSINESS.
CONTACT THE
COMMITTEE TO
FIND OUT MORE**

TRACTOR WIZARDS
Mobile Machinery Wash
Phone Roan

M 0273999004
02108329046

tractorwizardsltd@gmail.com

Tractors
Trucks
Excavators
Farm Equipment
Vehicles

F C
FURNITURE CREATIONS
HOME STAGING



Your Home Deserves to Stand Out – Let's Make Buyers Fall in Love

Selling your home?

In today's competitive market, standing out isn't easy. You want your property to capture attention, attract serious buyers, and sell for top dollar – but you're not sure how to make it shine.

That's where Furniture Creations Home Staging comes in.

We're professional property stylists based in Eureka, and we help homeowners transform their spaces into irresistible showpieces that buyers can't ignore.

Don't let your Waikato property blend in - schedule a consultation with us today!

0274792302



info@furniturecreations.co.nz



www.furniturecreations.co.nz





CTAS



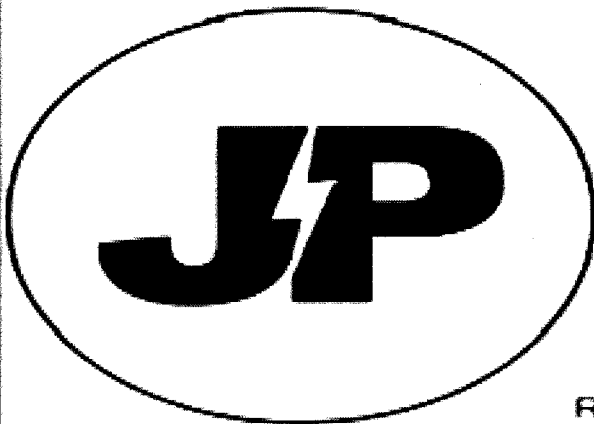
100% NZ Owned and Operated

- TXT and Email Alerts and Reminders
- TXT Shortcodes for your business or club
- Flight Status by TXTing your Flight to 8808
- Live Video and Audio Streaming on the Internet

Reminders by TXT and Email

YOUTXT™

www.ctas.nz | sales@ctas.nz | www.youtxt.nz



JP ELECTRICS
EST 2022

JAMES PALMER

REGISTERED ELECTRICIAN

⚡ 027 756 6804

⚡ james@jpelectrics.nz

⚡ www.jpelectrics.nz

Residential | Commercial | Heat Pumps



QUALITY ASSURED
MASTER
ELECTRICIAN

COMPUTERISED BULK SPREADERS LTD

Cartage and Spreading

FERTILISER, LINE, UREA SPECIALIST

Competitive Rates

PETER JONES

027 496 3370



37 years service in the Morrinsville district

Dig It Earthworks

EARTHMOVING & EXCAVATION

- House Pad & Driveway Prep
- Driveways
- Section clearing
- Footings & Post Hole Boring
- Landscaping & Lawns
- Farm Maintenance & Races
- Truck & Labour Hire
- Calf/Goat/Pig/Chicken Shed Clearing

CONCRETE LAYING

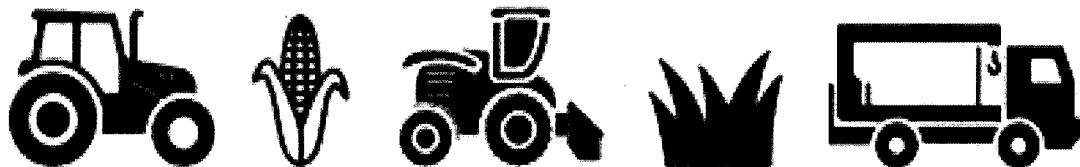
- House & Garage Pads
- Driveways
- Sheds/Workshops
- Patios
- Footpaths



Give Liam a call today for a free quote on 021 02839174



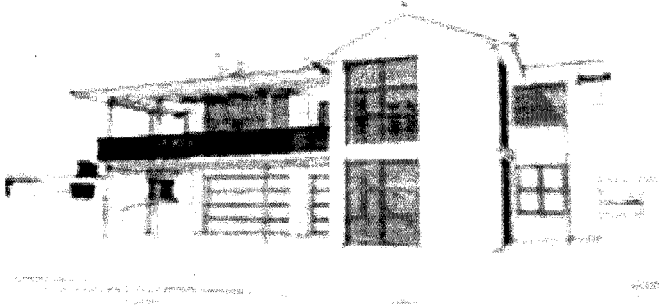
Jackson Contracting



Ag Contracting - Maize & Grass Silage - Hiab & Bulk Haulage

07 887 6688

www.JCLAG.co.nz



Billings Builders Ltd

Licensed Building Practitioner

New housing

Additions & alterations

Dairy sheds

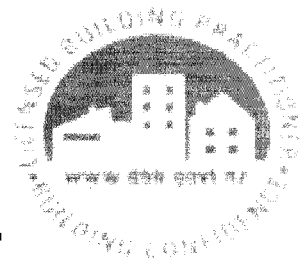
Farm buildings

Contact: Elliot 0275 766 599

Ivan 0274 941 961

167 Hunter Road, Eureka

ivanb.eureka@outlook.co.nz



LOCAL RURAL AGENT SERVICING YOUR LOCAL AREA



Kevin **DEANE**
M 021 970 902

Harcourts

Licensed Agent REAA 2008



GULL EUREKA

PETROL – DIESEL – LPG – OILS & LUBRICANTS

FARM SUPPLIES – GROCERY ITEMS

SHOP HOURS: MONDAY TO FRIDAY 730:AM – 600:PM

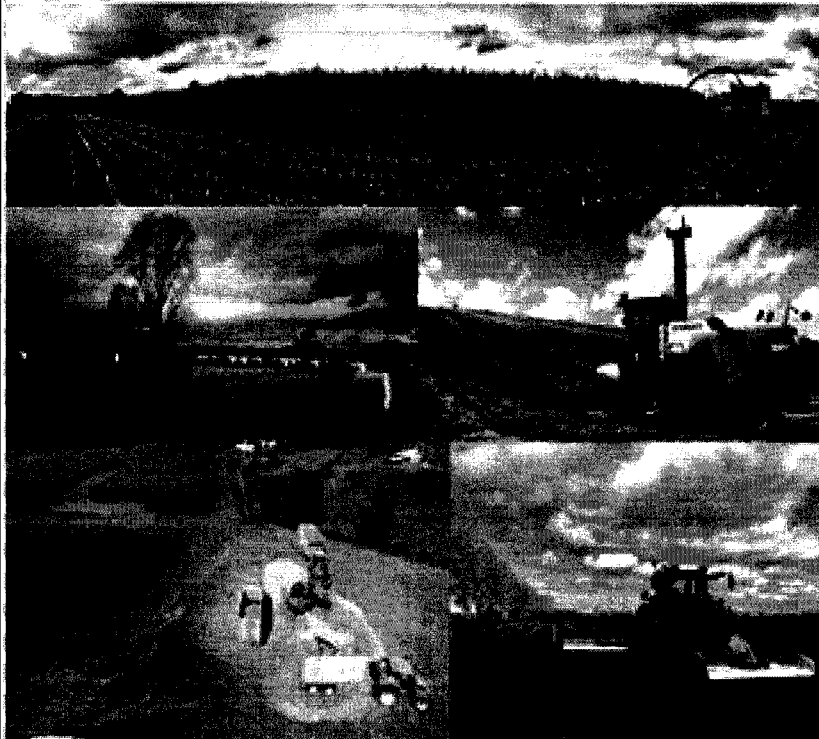
FUEL 24 X 7 PETROL & DIESEL FROM OPT (OUTDOOR PAYMENT TERMINAL)

**EFTPOS – RD1 FARM SOURCE – FARMLANDS – CARDLINK- AMEX -
MASTERCARD- VISA**

FOLLOW US ON FACEBOOK FOR DISCOUNT DAYS AND PROMOTIONAL INFORMATION

**Gull Eureka
1291 Morrinsville Road
R.D.6
HAMILTON
Tel: 07 824 1773**

Walling **CONTRACTING LTD**



For all your:

- **Ground Cultivation**
- **Planting**
- **Re-Grassing**
- **Under Sowing**
- **Grass Silage**
- **Maize Silage**
- **Digger & Spray**
- Requirements**

Phone Zach: 027 450 0125

EMAIL: walling.contracting.ltd@gmail.com

Rural **Consent Free** Pole Shed



you
are supporting more
than one New Zealand
Business



**Lifestyle
Rural
Industrial
Habitable
Pole Shed
School Shed**

✓ **We can now build anywhere in New Zealand**

From the Far North to the deep South - same Waikato Sheds experience, nationwide

✓ **One shed price, wherever you live**

Same shed. Same price anywhere in NZ

✓ **Qualified builders, every time**

Smith & Sons franchise is made up of fully qualified, professional builders

WHY STEEL ?

✓ More economical

✓ Less noisy

✓ Stays straight

✓ Fire resistant

✓ No moisture

✓ Faster to build

That's how we help deliver: great sheds, done right!



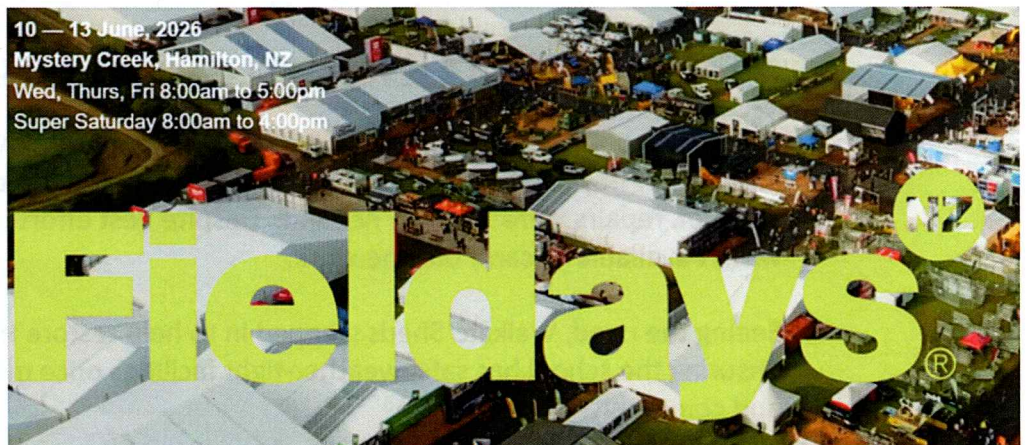
Waikato Shed Company

218 Hunter Road

Eureka 07 824 1045

Enquiries@waikatosheds.co.nz

www.waikatosheds.co.nz



Check out our site in the Pavilion, site PA2

Rural **Consent Free** Pole Shed



A beautiful small - footprint shed that punches above its weight

Featuring **Armosteel Colorzen Cloud cladding**, a **Nightfall roof with Driptex underlay**, finished with a **175mm Nightfill box gutter**.

And we have a clean, modern looking shed.

great shed, done right!



Helping where it matters most in the community

Kaihere school's shed, originally built by the local community many years ago, had seen better days. With significant damage to the front of the building and parts of the roof, repairs were urgently needed. Despite best efforts, government funding wasn't available to carry out the work.

Seeing the need, Waikato Sheds stepped in to help restore the much - used sheds, ensuring the school has safe, weather-tight facilities once more for use by children and community.

At Waikato Sheds, supporting local schools, groups and sports teams is about more than buildings - It's about backing the people who make Waikato such a great place to live in.