

Eureka Express

Vol XLVI No. 3 Circ 295

www.eurekaexpress.co.nz

APRIL 2025

editor@eurekaexpress.co.nz



FRONT COVER SPONSORED BY

WAIKATO SHED
COMPANY ✓
great sheds, done right!



Have you ever thought about disabled people and seniors with poor mobility living in your neighbours or the local area?

Looking at the Emergency Evacuation Plan in our local area. It is good, and it is not enough to think about us - disabled people from birth or become impaired from childhood and seniors with poor mobilities people.

Portable fold-up/down Wheelchairs, electric power wheelchairs may require a truck to carry this and hoist, hearing aid batteries, asthma inhalers, diabetes kits, blind people with a cane and guide dogs/ deaf people with their assistance dogs, Autisms with assistance dogs or sensory toys and earmuffs, friendly, accessible, non-verbal communication kits (visual pictures/email/symbol), power banks for charging mobiles, lights plus solar flashing lights for Deaf people and Deaf with disabilities people, and shared first aid boxes.

How much do you know about your disabled neighbours, Hard-of-hearing seniors, D/deaf people, and even D/deaf with disabilities like me? I know most people would not meet disabled neighbours or know very little about disabled people, and you may have a problem asking by getting to know disabled people, D/deaf people and D/deaf with disabilities people in the community. It's not just about awareness but about forming personal connections. Have you ever thought about this or been prepared to get to know more than a couple of disabled people, Deaf people and D/deaf with disabilities people? Do you have the full experience skill with us or partially with us?

For example, I worked with the staff of the largest Banking building for many years. A fire drill happened, and staff went out, including the warden, leaving me behind in the data entry machine room. I was unaware of this until a friendly face person - a fire chief from my school days recognised me and asked me if I was aware. My answer was no. This incident, which could have been an emergency, highlights the gaps in our safety measures. We walked out to face the manager and the team person about this incident. They responded that they had forgotten about me, and the fire chief had refused their answer. They failed the fire drill to leave me behind if there was a real fire.

Every day, I travel out for my Social Service role; I witness accidents on the roads and assist a few people with neurological disabilities in the street for their safe space with other people, even teenagers/youths in the city, by texting 111 and staying online the emergency responders tracked me down and continue to texts than a voice call.

In Coromandel, Hawkes Bay and, of course, Auckland, there were vast of damaged, blocked roads, a lack of urgent medical supplies and an extensive lack of communication due to signal/cell tower reception failure through many thousands of disabled people, seniors with mobility difficulties, D/deaf people and D/deaf with disabilities. Guess?? I made several contacts with service people, family members living there, and support workers I know to reach out to them and ensure their safety is the number one priority. In Hawkes Bay, a small group of farmers used their trucks and transported many thousands of seniors, manual wheelchair users, and power wheelchairs without problems. Several Deaf people were without communication contact, and a small group of local people learnt basic sign language to communicate with them.

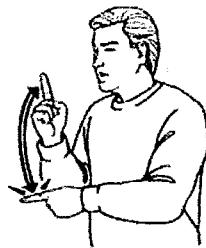
Every disability organisation in the city has name lists, contact numbers, and text numbers in its files. However, in rural areas, like small towns, there are small disability organisations, such as social groups, that are not there every week.

Why not take up first aid training in the rural area? I have updated every two years for my work and here. I also have a Health and Safety Representative under two Disability Organisations. I am looking for a new training programme option in rural areas. With an AED (**Automatic External Defibrillator**), there is one problem: it cannot receive a text code to access this AED. Here is the detail - **Some defibrillators are locked with a keypad entry system and can only be opened with a code** because this is to deter vandalism and theft. If the defibrillator is registered, you can get the code by phoning 999/112. Sometimes, there is another number on the box to call to get the number. This method does not work for all D/deaf people and D/deaf with disabilities people.



emergency

ohotata



emergency

ohotata



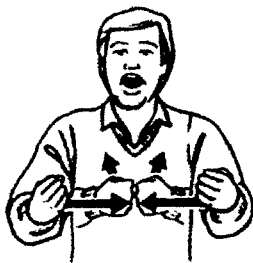
mobile phone,
text (mobile
phone)

waea pūkoro, pātuhi



mobile phone

waea pūkoro



accident,
collide

aituā, tuki



collide,
collision

tuki, tukitanga



earthquake

rū whenua



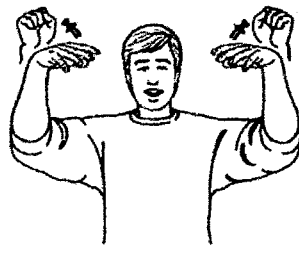
flood

waipuke



flood

waipuke



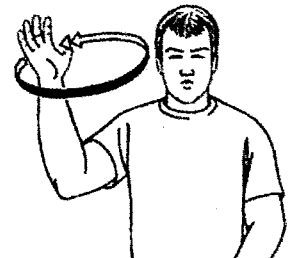
power cut

*poroa te hiko,
tapahia te hiko*



medical

oranga tinana



wind

hau

DONATIONS ACCEPTED

We are all aware that the cost of everything is going up all the time. The printing of the Express is also costing more. If you would like to make a small donation, we would be very grateful. We will send you a receipt (which is not tax deductible as we are not registered as a Charitable Trust), for your donation so please put your name as a reference. Our bank account number is 03-1559-0042660-00. The name of the account is Eureka Express. We would also like to thank everyone who puts their loose change in the box at the Gull Station, all donations are gratefully received and help towards the rising costs. A huge thank you for the donations we have received.

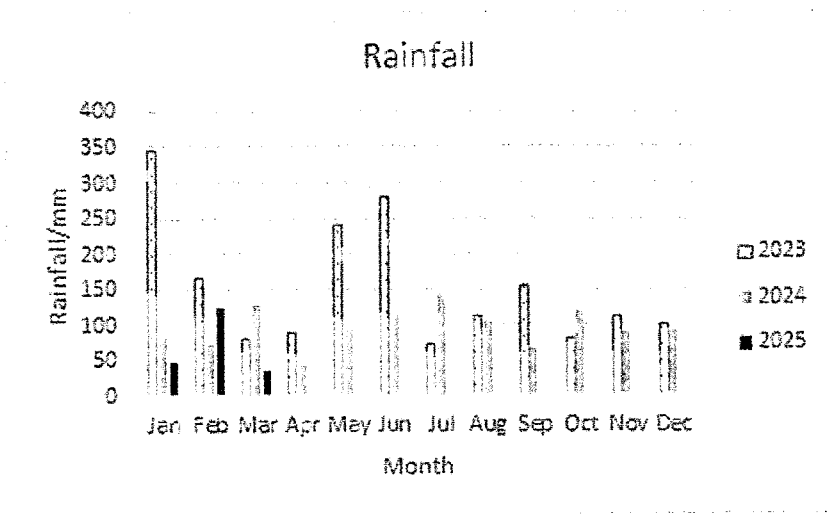
JUSTICE OF THE PEACE FOR EUREKA

Kevin Deane is our local JP. He is located in Eureka.

Please call or text to arrange an appointment - ph: 021 970902

WEATHER

Weather for March	2025	2024
Rainfall total	36 mm	127 mm
Rain Total for year	208.5mm	286 mm
Rainy days	4	14
Most daily rainfall	13 mm	21mm
Highest wind speed	37.1km/hr	50km/hr
Temp high	26.7 °C	23.8°C
Temp low	5.5 °C	3°C



HALL UPDATE

We would like to say huge thank you to Ai Meng & Joo Gie of Waverley Road for their kind donation of a table tennis table and accessories. This means now that the hall has a set and if anyone wants to start up a night for people to play, we have some equipment. Could be a fun mid-week activity for the family or for the kids and their friends. Please let us know if you are interested.

Just for you all to note. There is currently a changing of the guard for the hall committee. This is a work in progress situation at the moment but will be completed by the next AGM. Bookings are coming in steadily so if you want to book the hall, don't hesitate book now. Winter is a good time for family parties in the hall. All under cover and heating too. For all bookings, please email eurekahallwaikato@gmail.com

	Residents	Non-Residents
Hall per day	\$50	\$100
Social Function	\$100- \$300	\$250 - \$500
Childrens party	\$30	\$75
	\$400 Secretary's Discretion	\$500 to \$1000 Secretary's Discretion

The Express committee are still looking for people to join us. It is not a very time-consuming job, as there are several factors to the creating and distributing of each issue. Contact us on editor@eurekaexpress.co.nz . It's a great chance to be involved in the community and to meet people.

EUREKA EXPRESS ADVERTISING RATES 2025

For all articles, advertisements, photos, ideas and suggestions, please use the express email address. The Express is printed February – November each year. All articles should be sent to the editor by the 20th of each month. editor@eurekaexpress.co.nz. Please note all applications for advertising are approved by the committee and can be declined or accepted due to available space. Please do not be offended if we ask you to wait awhile so we can make the adjustments. We do endeavour to accommodate as many advertisements as possible, however, we prefer articles for people to read, and not fill each issue with advertisements.

Classified adverts free		
Small business x 10 insertions	\$10 per month	\$100 per year
Third of a page x 10 insertions	\$15 per month	\$150 per year
Half page x 10 insertions	\$20 per month	\$200 per year



Pukeko Preschool Newsletter

April 2025

This month at Pukeko Preschool has been all about getting our Vegetable Gardens ready for Autumn and Winter planting.

The tamariki and kaiako have been working hard out in the garden, preparing the garden bed, topping up the soil and planting seeds and flowers.



We have already planted some brassicas and all of our seedlings have started to sprout. Watching our produce grow from seed to table is exciting. Gardening sparks curiosity among our learners, and encourages them to form working theories about how and why things work.



We have had fun using our produce to do cooking and baking, making tomato soup, apple crumble, fruit juice and banana muffins, and we are looking forward to using our pumpkins to make soup really soon!



The tamariki have also been working on making their own fertiliser using banana skins. Gardening is such a learning rich opportunity for children to learn through real life experiences, out in nature, and to connect with the world around them and each other, which are all things we value here at Pukeko Preschool.



Ngā mihi,
Shell Proebstel
*Curriculum Provider and
Educational Lead*
Pukeko Country Preschool
07 824 086



EASTER COLOURING COMPETITION

2025 RESULTS

Preschool:

- 1st Olivia Forsyth
2nd Oscar Taylor

Juniors:

- 1st Claire Gray
2nd Annabelle Boe-Stevens
3rd Una Van de Pas

Commended: Isla Van de Pas, Kayleigh Thompson, Libby Roche, Baylee Rounthwait, Chloe Bartlett, Louis Blair, Charlie Roche, Olive Thomas

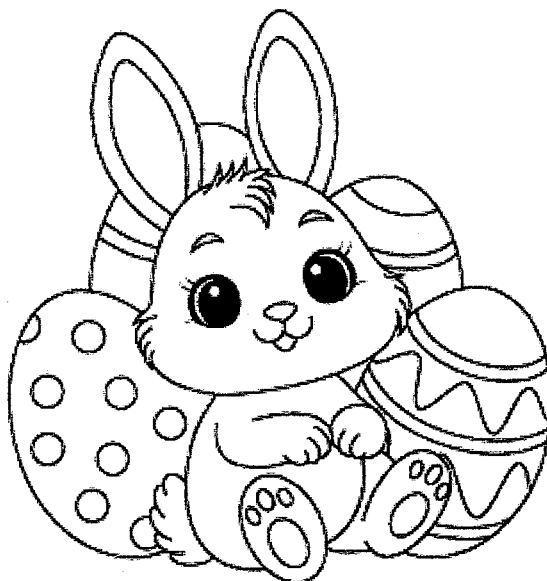
Intermediate:

- 1st Charli Carroll
2nd Dinah Van de Pas
3rd Madeline Barker

Commended: Gia Redgate, Ava Thompson, Beau Thomas, Austin Wildon, Caleb Wallace, Declan Priest, Paul Czyz

Seniors:

- 1st Clara Davies - Colley



The judges were once again very impressed with the high standard of the lovely entries this year – making it very difficult to decide the winners. Congratulations and thank you to all who entered. We hope you enjoyed your prizes and seeing your colouring displayed at Gull Eureka over the Easter week.

Prizes kindly donated by Linda Journeaux

Why do we eat eggs at Easter?

Easter is the most important date in the Christian calendar. Every year, Christians around the world remember Jesus' crucifixion and celebrate his resurrection on Easter Sunday. In 2025, Easter falls on Sunday 20 April. An important part of celebrations today is giving (and eating!) chocolate eggs. But how did eggs become such an important part of Easter celebrations?

Early Easter Eggs

Throughout history, people have given each other eggs at spring festivals to celebrate the new season. Eggs represent new life and rebirth, and it's thought that this ancient custom became a part of Easter celebrations.

In the medieval period, eating eggs was forbidden during Lent (the 40 days before Easter) so on Easter Sunday, tucking into an egg was a real treat! This was especially true for poorer people who couldn't afford to buy meat. Eggs were given to the church as Good Friday offerings, and villagers often gave eggs as gifts to the lord of the manor at Easter. Even royals got involved – in 1290, Edward I purchased 450 eggs, which were decorated with colours or gold leaf and given out to his household.

There were lots of superstitions about eggs at Easter too. Eggs laid on Good Friday were said to turn into diamonds if they were kept for 100 years, and if your egg had two yolks it was a sign you would soon become rich. Some people thought that eggs cooked on Good Friday and eaten on Easter Sunday would improve fertility and prevent sudden death, and it became the custom for people to have their eggs blessed before eating them.

On an egg roll!

In Lancashire in the 18th century, 'pace eggs' became very popular. Pace eggs were made from hard boiled hen, duck or goose eggs, with decorated shells dyed with bright colours – just like in the medieval period. They were given as presents at Easter, or to the actors at pace egg plays. Pace egg plays were medieval style mystery plays, with a theatrical fight between a hero and a villain. The hero character was usually killed, before being brought back to life to triumph over the villain. In many plays, the hero character was St George.

Pace eggs were also rolled along the ground in a race called an egg roll. Children would roll a decorated pace egg down a hill, and see whose egg rolled the furthest without breaking. It's possible that these races started as a symbol of the rolling away of the stone from Jesus' tomb.

Egg rolling is a tradition that still continues in some parts of England, although today it is chocolate eggs being rolled down the hill! There is an egg rolling event every year in Preston, Lancashire, but the most famous egg roll takes place in the United States of America, on the lawn of the White House, in Washington DC.

Chocolatey treats

While Easter eggs may once have been made from decorated hen, duck or goose eggs, today the eggs we give and receive at Easter are made for people with a sweet tooth!

The first English chocolate egg was sold by Fry's in 1873, and Cadbury's quickly followed them, introducing their own chocolate egg in 1875. These early Easter eggs were made using dark chocolate, and were smooth and plain, but in 1897 the famous Cadbury's Dairy Milk Chocolate was first introduced. Chocolate eggs made with this new recipe were very popular and soon became Easter bestsellers. Even today, most Easter eggs are made using milk chocolate. There is a huge range available including milk, dark and white chocolate, and even eggs with our favourite sweets and chocolate bars included inside the packaging.





FALL

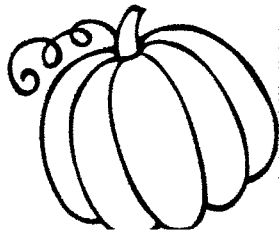


WORD

SCRAMBLE

Z E G A J S D M Y F U N I Q W B
P K R N C X T S E V R A H L S O
L O D I B Y R A Z T S W K E R J
S C V T F O E P J Q K O E A E M
D X F E L N Z L U A G R S V D T
R P H O G W O I L C T C U E I G
I L C S V E R B D O Y E J S P N
B F Q J M R T X G R W R E D S I
H N A R E O S A K N Q A X T F G
Y M Z L H E O V B P J C H O L N
C U S X L U T R F L I S O R K A
N T J P Z D E G H M E T I A Y H
Q U P U M P K I N S B S L N E C
F A B H S I C W R A U D Y G X Q
G N I K A R A F L X H M P E C V
A R W E D H J L T S O R F B U K

ALLF
PAPEL
EALF
NUMPPIK
NORC
AHY
ROCAN
TEASWER
RASCERCOW
WOERFLUNS
KARE
DIREYAH
MUPPKIN CAPTH



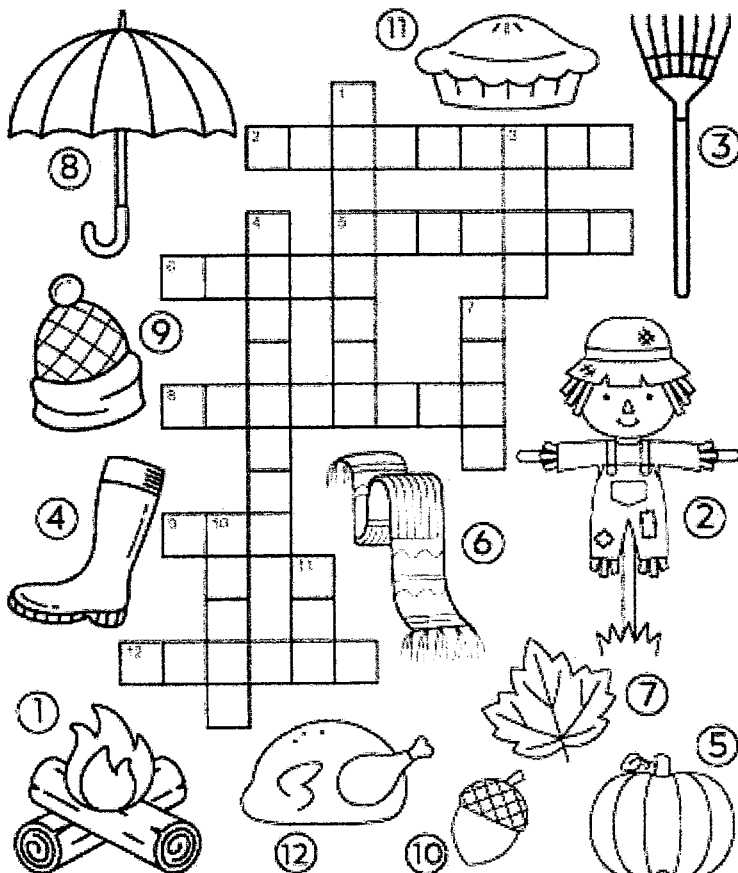
acorn	colors	leaves	scarecrow
apples	fall	mushrooms	spiders
autumn	football	orange	squirrels
birds	frost	pumpkins	trees
bonfire	harvest	raking	vegetables
changing	jacket	red	yellow



Fall, apple, leaf, pumpkin, corn, hay,
acorn, sweater, scarecrow, sunflower,
rake, hayride, pumpkin patch

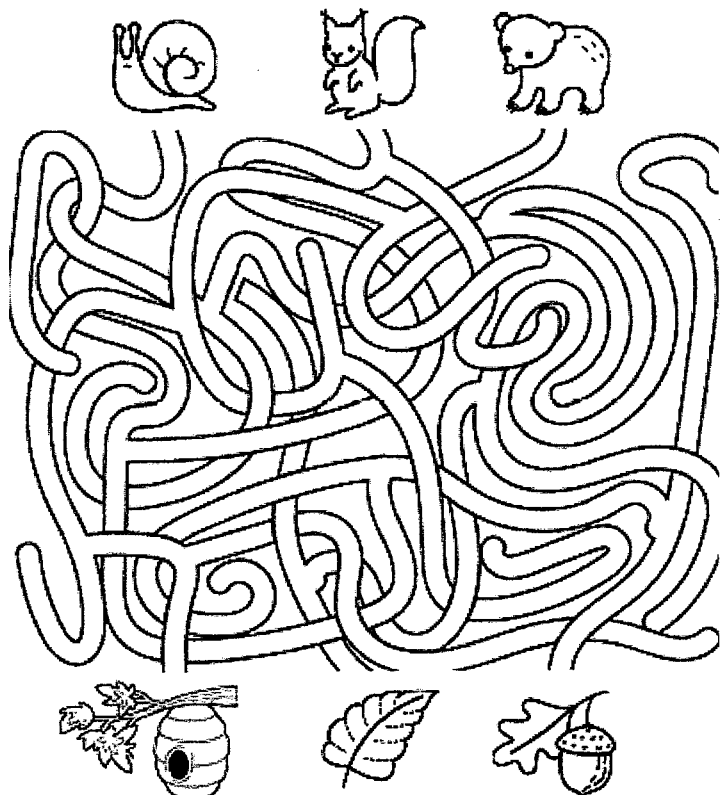
AUTUMN

Crossword
Puzzle



Fall is Here!

DIRECTIONS: Use a different colored pencil or pen to trace each of the three forest animals to his favorite autumn food.







Gardening Tips

If the season has gifted your garden with rain, make the most of the opportunity to plant new shrubs, climbers and roses.

Vegetables and herbs

- *Keep the veg patch growing: ready grown seedlings give you a jump start when growing vegetables. Plant celery, beetroot, kale, bok choy, lettuce and spinach*
- *Harvest capsicums, eggplants and chillies: these continue to ripen until the end of autumn. Once eggplant and chillies are ripe they can mature on plant for up to two weeks. Capsicums they wilt after a week so need to be picked.*
- *Regenerate herbs-collect seeds of fennel and dill to use for spring planting. For any coriander still in the ground collect seed to sow new plants now as they will readily germinate over autumn.*

Fruit

- *Prune stone fruit: prune to reduce the size of the tree and overcrowded stems. It is also good to remind yourself they don't need pruning every year.*
- *Harvest feijoas; Sweet and juicy and fresh feijoas are wonderful. Never pick from the tree wait for them to fall. The skins are durable and rarely get damaged when they hit the ground. Hard fruit tend not to ripen once picked*

Flowers

- *Plant autumn flowers: Reliable plants are stocks, cyclamen, pansies, violas, primulas, alyssum, calendula and snapdragons. Freshen up depleted summer soils prior to planting these flowers with good compost, sheep pellets or planting mix*
- *Nurture Roses: Trim back flower heads and sprinkle rose food around the root zone – this final feed helps them prepare for winter. Remove any dead or diseased stems and rake away any debris from around the base of the plants. A little care now will pay dividends before the plants go into sleep mode over winter*



Ladies a Plate

Fruit and Nut Anzac Slice

This ANZAC slice, which is like one giant biscuit packed with extras of dried fruit and nuts and topped with a drizzle of is a modern twist on the traditional ANZAC biscuit recipe.

100 g butter	2 tbsp golden syrup
½ cup caster sugar	¼ cup soft brown sugar
1 cup rolled oats	1 cup fine desiccated coconut
1 cup plain flour	1 tsp baking powder
1 tsp baking soda	2 tbsp hot water
½ cup dried apricots, coarsely chopped	½ cup dried cranberries
½ cup walnuts, almond or hazelnuts coarsely chopped	
50g dark chocolate, coarsely chopped	1 tsp coconut oil

Preheat oven to 180c (160c fan forced). Line a 20cm square cake tin with baking paper leaving overhang on all sides.

Melt butter and golden syrup in a large pot. Remove pot from heat and stir in the sugars, oats, coconut and flour. Put the baking soda in a small bowl, add hot water and stir to dissolve then add to slice mixture. Add the apricots, cranberries and nuts mix well to combine. Tip the mixture into the prepared tin and press down well.

Bake in centre of the oven for 25 minutes until golden brown. Remove from oven and allow to cool in tin. Use the paper over hang to lift the slice from the tin. Melt the chocolate and coconut oil together and stir until smooth. Drizzle chocolate over cooled slice. Cut into 16 hunger-sized or 32 bite sized pieces

Anzac Biscuits

100g Butter	2 tbsp golden syrup
½ cup caster sugar	¼ cup soft brown sugar
1 cup rolled oats	1 cup desiccated coconut
1 cup plain flour	1 tsp baking soda
2 tbsp hot water	

Preheat oven to 180c (160c fan forced) line two baking trays with baking paper

Melt butter and golden syrup in a large pot. Remove pot from heat and stir in the sugars, oats, coconut and flour. Put the baking soda in a small bowl, add hot water and stir to dissolve then add to pot and stir to combine. Roll mixture into tablespoon sized balls about 5 cm apart onto trays, press down on each ball to flatten by half. For softer, chewy biscuits, bake for 12 minutes, swapping trays around ½ way through, until golden brown. Bake 3-4 minutes or longer if you prefer crispy biscuits.

Allow to cool on tray to firm, then transfer to a wire rack to cool completely.

Ethical online media

The days of rampant piracy are well and truly behind us. While some people still pirate media and there is little to dissuade them from doing so, for the most part consumers have opted to pay for the less dicey, less-virus-fraught world of legitimate online media consumption. And this is good. Where it goes wrong is with some bad actors, particularly on the music front. For over a decade now, Spotify has been the go-to music player for the majority, unfortunately, because it pays almost nothing to the artists whose work it capitalises on, pays record companies substantially more than independent artists, pays music writers to create generic music fodder which it doesn't have to pay ongoing royalties for, and generally scams artists out of a good time. Apple music, Google music and so on aren't so much different - in the radio world, a single playback of a song earns the artists something like \$2. To earn the same amount from most streaming services, a song must be played around 4000 times. To be fair, many of these services are ad-supported and can't afford *that* much. But when the CEO of Spotify earns more than any musician in the history of earth, you can bet the majority of money isn't going to people who earned it.

Independent video production is no different - YouTube has made it almost impossible for content creators to get paid a living wage on its platform, no matter how much they produce. It removed the dislike counter to discourage review-bombing of advertiser's products, making it difficult to tell which videos are likely to be good, and mainly uses its interface to psychologically manipulate users into staying on the platform, consuming, and watching ads. And of course, YouTube ubiquitously hosts pirated content, a problem present since its inception. But it's the only platform for independents which *does* pay video creators. This is slightly more understandable given that video takes substantially more bandwidth than audio, so there are higher costs involved in providing such a service. At the higher tier, things are a little more rosy. Services like Netflix, Amazon Prime and Disney+ act as executive producers for a lot of mainstream and niche content, and artists get paid well. The main downside to these services is that they're so divided now - if you want to watch one thing, it's on Netflix - another is exclusively on Amazon Prime, or Hulu, etc. This means many turn to piracy to support their habit - not a morally defensible position, though an understandable one. If the audio world were to take the same approach to content distribution, people would return to piracy in a heartbeat.

So we're locked in this never-ending struggle between consumer and corporate greed, neither of which can win because the central problem is greed, not so much the things that people are greedy for. A better approach is to support artists directly, where it's possible to do so. Platforms like Bandcamp do this for music, while taking very minor cuts in profit from the artists, while others like Vimeo do the same for video. Both seldom feature 'big name' artists or media, because those people are locked into the corporate platforms and delivery systems. In some sense, the little guy wins out here. But you have to start looking for the little guys and supporting them.

Confused about media? Contact Matt at 0211348576 or info@homepcsupport.co.nz \$80 per hour, or \$70 for drop-off-to-workshop services.



Bentley Home PC Support



PETER GLIDDEN HONDA
HUNTLY AND MORRINSVILLE

PROUDLY SPONSOR OF

FARMERS DAY

on

WEDNESDAY 14TH MAY 2025

at Hukanui Golf Club

**Come along for a day of fun with our
local farming community**



Golfers and Non Golfers Welcome

18 Holes – Teams of Four Players, Ambrose,

Registrations from 9.30am for 10.30am Shot Gun Start

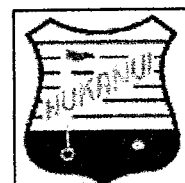


Entry \$25.00 per person

**Proudly sponsored by GAVINS, Ballance, Pioneer,
Farm Source Taupiri, Bridgestone Huntly, Wealleans, Ecolab,
Sam Machinery, Anexa FVC, Brian Stewart Livestock, Gilmours,
GCM Feeds, TB Electrical, Walters Hedge Cutting,
Harcourt's Gary Stokes/Kevin Deane Real Estate, Waikato
Tractors, K&L Distributors, New World Rototuna, Qubik, Halter NZ,
Greenlea, Vinnings, BNZ Bank**

**“Great assortment of Prizes, Raffles, Auction, BBQ”
Refreshments will be available - Prize Giving & Auction 3pm**

To enter please Phone: (07) 824 3784 or
Email: hukanuigolf@xtra.co.nz
Hukanui Golf Club Inc.
1550 Gordonton Road, Gordonton



Tamahere-Woodlands Councillors' update April 2025

ANZAC Day

It is a privilege to be able to attend ANZAC Day commemorations in the Tamahere-Woodlands Ward at **Eureka** (10am at the cenotaph outside the Eureka hall) and **Gordonton** (6am at the cenotaph outside the Gordonton hall). Thank you to those in our community who keep this tradition alive. ANZAC Day is a time to honour those who have served New Zealand in all conflicts and peace-keeping missions abroad, but it's also a time to reflect on the impact of conflict on our communities, and to renew our hopes for peace between nations, and at home here in New Zealand.

We are fortunate to live in a time of relative peace, but many people who have recently made New Zealand their new home have had first-hand experience of war and conflict. We can honour the ANZAC tradition by continuing to strive to create a just and welcoming society where we care for those around us, especially our young people, our elderly and those with special needs.

Consultation on Long Term Plan, Waters CCO

Consultation is now **open until 11 May** on Waikato District Council's Long Term Plan and proposal for a Waters Council-Controlled Organisation (CCO) with Hamilton City.

The draft plan supports a vision of creating "liveable, thriving and connected communities" and sets out what the Council plans to do over the next nine years and how we'll fund it, including maintaining our \$2 billion in assets (such as roads, water treatment and reticulation, parks and open spaces) on your behalf. As stated last month it is based on a general rate increase of 4.25% for 2025/26 falling to an increase of 3.05% in 2026/27 and then mostly smaller rises of between 1.5% - 4.5% in subsequent years. Your proposed overall rates may be higher depending on the range of services you get that attract targeted rates (such as reticulated water and rubbish/recycling). You can check the effect on your own property by going to our rating information database on www.waikatodistrict.govt.nz/rid.

Among the major issues for your feedback is a new model for managing water services – a proposed CCO to be jointly-owned by Waikato District Council and Hamilton City. The reason for a CCO is to gain economies of scale that will, over time, help control the rising costs of treating and managing our drinking water and wastewater.

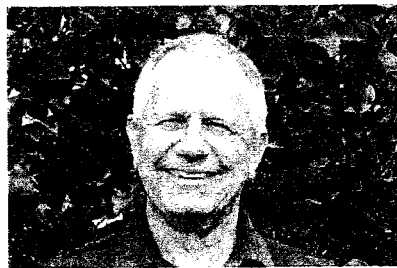
We're also seeking feedback on how and how much we invest in road maintenance. NZTA has agreed to continue to subsidise our maintenance programme, but we will not receive as much as we had hoped for. However NZTA has not approved about \$35m of funding for our new (capital works) roading projects over the next two years as it needs to prioritise funding for building roads of national significance.

Other issues for your consideration include our rubbish/recycling services, fees and charges (including rubbish bag sticker prices), halls, and how we charge development contribution levies – a one-time payment for developers or property owners to contribute to new infrastructure when they are building, sub-dividing or changing land use.

Find out more at an online Q&A session on Tuesday 29 April at 7-8pm or Friday 2 May at 12.30-1.30pm, or attend a local drop-in session at either Tamahere Community Centre on Tuesday 6 May 6-7pm or Gordonton Hall on Thursday 8 May at 6-7pm. Other drop-in sessions are being held in different centres across the district.

For more information, to read the LTP consultation document, and to have your say by 11 May, go to the Council website here: www.waikatodistrict.govt.nz/say-it.

Contact your Tamahere-Woodlands Councillors:



Crystal Beavis, mob 0275 957 927, email crystal.beavis@waidc.govt.nz

Mike Keir, mob 027 449 3012, email mike.keir@waidc.govt.nz

SH1B Telephone Road Update - 10th April 2025

The upgrade of the rail crossing and intersection passes the halfway mark

Preparation and materials for culvert drainage work

Work continues on SH1B improvements

The project to upgrade State Highway 1B Telephone Road railway crossing has past the halfway mark and activity on site is ramping up.

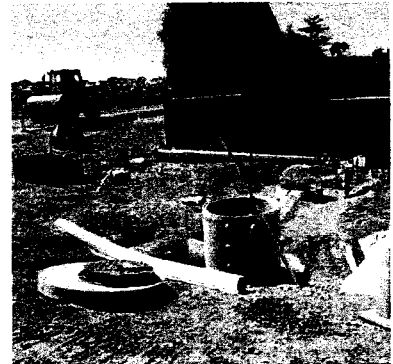
Pavement construction is currently underway with our contractor, Higgins, tackling the task of raising the road to significantly decrease the height difference with the railway line.

As well as raising the road, the shoulders are being widened on all sides of the Telephone Road/Holland Road intersection. This will allow space for turning vehicles and allow vehicles to move out of the way of the railway crossing if needed.

In addition to the work happening above ground, plenty is happening below it. The culverts around the intersection were found to be in poor condition and while the road is closed, the opportunity is being taken to replace these.

A 375mm culvert has been added alongside Marshmeadow Road, while a 900mm culvert will be installed this week under Holland Road.

Over the next month or so, the road will continue to be built up before surfacing can begin. Then as we get near completion, new lights and signage will be installed to improve safety around the rail crossing and intersection.



Update on crossing re-opening

Work to upgrade the rail crossing at SH1B Telephone Road and adjacent Holland Road intersection is progressing well, with work on track to finish around mid-May.

When the roading part of the project is complete, Holland Road at the intersection with Marshmeadow Road will reopen to traffic, after being closed at the start of work in February.

SH1B and the rail crossing will remain closed to traffic until railway signals have been put in place and both KiwiRail and NZ Transport Agency have agreed that it is safe to do so.

KiwiRail have advised that their signal work is scheduled to take place in the second half of July, however they are investigating options that may allow the crossing to reopen to traffic sooner.

We will keep the community updated when we have a confirmed date for the rail crossing to reopen.

Thank you to the community

We would like to thank the community for their continued patience while work is on going. We understand that roadworks are disruptive to the community as they add time and distance to everyday journeys, such as getting the kids to school or going to work.

We are working as quickly as we can to get these improvements completed and the railway crossing open. If you would like to get in touch with us, please email Waikato.Projects@nzta.govt.nz and you can find more information about the project at nzta.govt.nz/projects/sh1b-telephone-road-rail-crossing/.

LAWNMOWING & GARDENING SERVICES

Professional lawn and garden -care services



Alex & Sharyn Macdonald

For free no-obligation quote:

Phone 027 479 7282

or 027 308 6781

E::macdonaldmowing@gmail.com

Www.lawnandgradenservices.co.nz

Residential—Rural—Commercial

Spraying—Fertilizing—Weeding

HAIRFIELDS

HAIR DESIGN

95 HOOPER ROAD

Sharon Laurent

Full salon facility in Eureka

Total hair care professional

and many years experience

Agent for Nutrimetics

Open Tuesday to Thursday

Late nights Tues/Thurs

Tel. 027 280 5978



Servicing and installation

on all types of pumps

Full water treatment

service available

DAREN ROSS

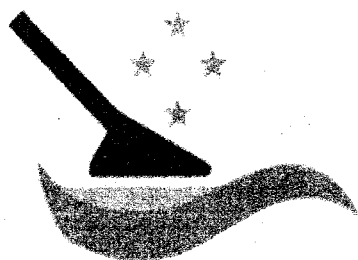
Ph: 8241726

Or 0274 346 571

Email:

admin@rosspumps.co.nz

Morrinsville Professional Carpet Cleaning



Carpets and rugs

Lounge suites

Flood recovery

Latest equipment

Very best chemicals

Call David 02 777 200 30

Above All Cleaners

- Gutters vacuum cleaned
- Moss, lichen and mould treatments to roofs, driveways and paths
- Soft wash to houses soffits and fences
- Water blasting and drain unblocking
- Green gunge gone!

Call David 02 777 200 30



Edie Swney

Senior Consultant/Owner

Cruising specialist and all aspects of travel

Phone 021 734 4140

Email

edie@thetravelbrokers.co.nz



A higher standard



Easystake ,

Your garden plant support

Easystake: easy to use, easy to place, easy to move.
galvanized steel construction for long life

Bloom Stand: displays your pots of colour, position for maximum impact, galvanized steel and available in two heights



Easystake by Machus



Easystake.co.nz

Simon Mobile 02108063432



161 Morrinsville Road, Hamilton, 3286

Phone: 07 856 4522 Email enquiries@newsteadvets.co.nz

Website: www.newsteadvets.co.nz

Newstead Vets offer a full range of veterinary services for small animals including:

- * Consultations (by appointment only)
- * Soft Tissue and Orthopaedic Surgery
- * Digital Radiography and Ultrasonography
- * NZVA Microchipping Accredited Practice
- * Nutrition and product Advice
- * Rural location with ample parking
- * Referral to Specialists
- * PennHIP Certified
- * Full Laboratory Service
- * Hospitalisation
- * Cremation Service
- * Convenient Online Shop

G&M FENCING

WAIKATO WIDE

For all your rural, lifestyle and residential fencing needs

Contact Mitch

0278418055

gandmfencingnz@gmail.com

Local Boutique Jeweller

DESIGN • MANUFACTURE • SHOWROOM

- Showroom by appointment only
- Private personal shopping experience
- Repairs and maintenance
- Custom design & manufacturing
- Remodelling old or unworn jewellery
- Unique, one-of-a-kind designs & small collection jewellery
- Independent insurance valuation services
- Wine and cheese shopping experience for small groups



GET IN TOUCH

@erikawatsonjewellery

@ErikaWatsonJewellery

erikawatsonjewellery@gmail.com



CTAS

100% NZ Owned and Operated

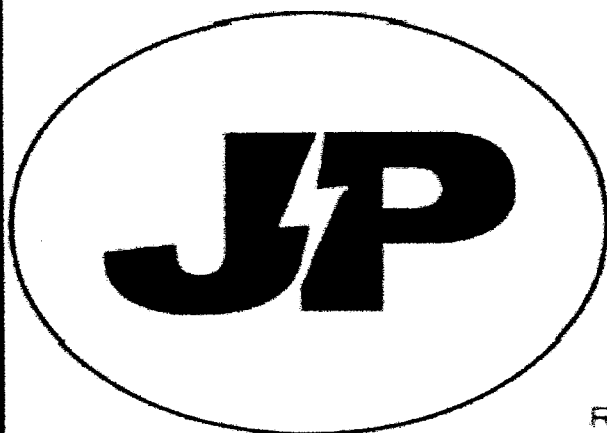
- TXT and Email Alerts and Reminders
- TXT Shortcodes for your business or club
- Flight Status by ~~TXTing~~ your Flight to 8808
- Live Video and Audio Streaming on the Internet



Reminders by TXT and Email

YOUTXT™

www.ctas.nz | sales@ctas.nz | www.youtxt.nz



JP ELECTRICS

EST 2002

JAMES PALMER

REGISTERED ELECTRICIAN

⚡ 027 756 6804

⚡ james@jpelectrics.nz

⚡ www.jpelectrics.nz

Residential | Commercial | Heat Pumps



QUALITY ASSURED
MASTER
ELECTRICIAN

COMPUTERISED BULK SPREADERS LTD

Cartage and Spreading

FERTILISER, LINE, UREA SPECIALIST

Competitive Rates

PETER JONES

027 496 3370



***37 years service in the Morrinsville district ***

Dig It Earthworks

EARTHMOVING & EXCAVATION

- House Pad & Driveway Prep
- Driveways
- Section clearing
- Footings & Post Hole Boring
- Landscaping & Lawns
- Farm Maintenance & Races
- Truck & Labour Hire
- Calf/Goat/Pig/Chicken Shed Clearing

CONCRETE LAYING

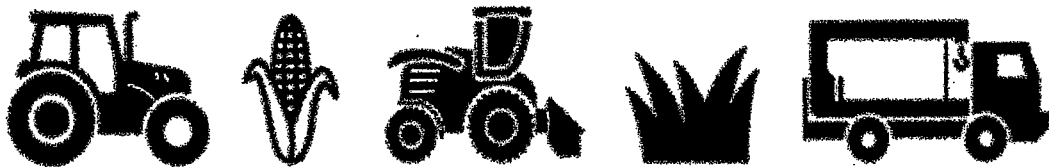
- House & Garage Pads
- Driveways
- Sheds/Workshops
- Patios
- Footpaths



Give Liam a call today for a free quote on 021 02839174



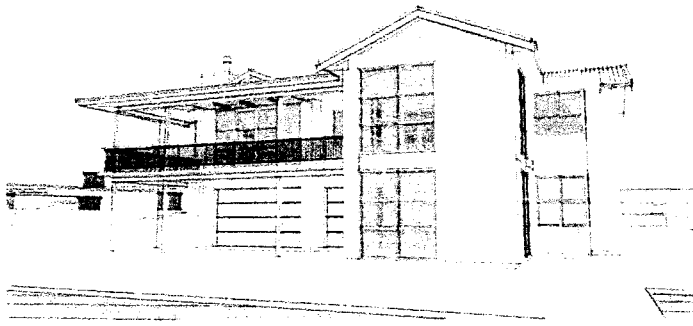
Jackson Contracting



Ag Contracting - Maize & Grass Silage - Hlab & Bulk Haulage

07 887 6688

www.JCLAG.co.nz



Billings Builders Ltd

Licensed Building Practitioner

New housing

Additions & alterations

Dairy sheds

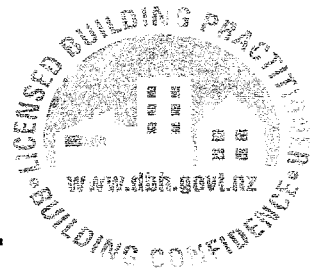
Farm buildings

Contact: Elliot 0275 766 599

Ivan 0274 941 961

167 Hunter Road, Eureka

ivanb.eureka@outlook.co.nz



LOCAL RURAL AGENT SERVICING YOUR LOCAL AREA



Kevin **DEANE**

M 021 970 902

Harcourts Kevin Deane Real Estate
Licensed Agent REAA 2019



GULL EUREKA

PETROL – DIESEL – LPG – OILS & LUBRICANTS

FARM SUPPLIES – GROCERY ITEMS

SHOP HOURS: MONDAY TO FRIDAY 730:AM – 600:PM

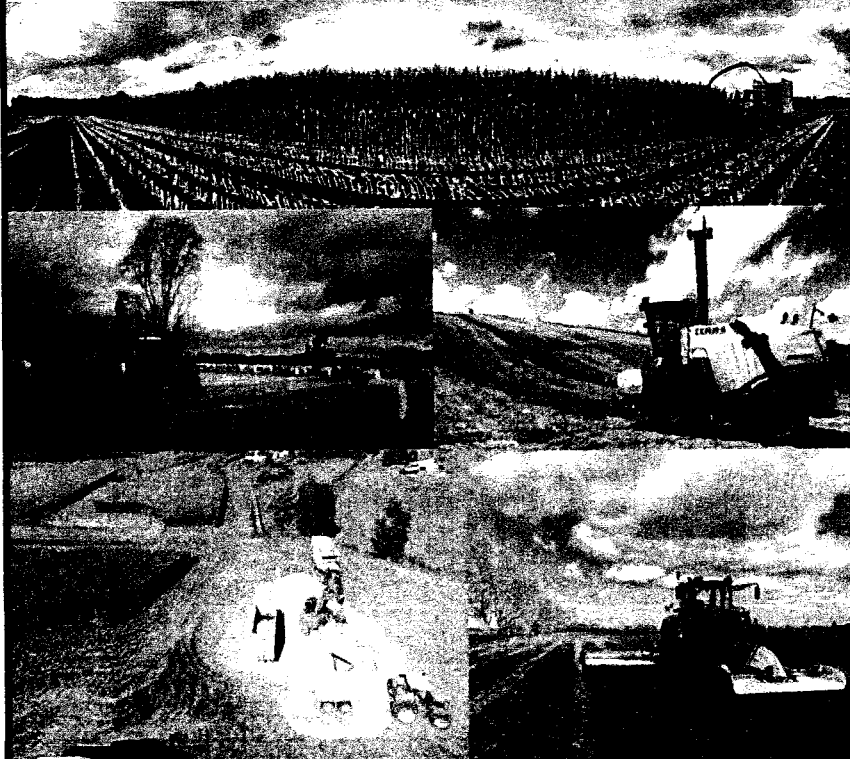
FUEL 24 X 7 PETROL & DIESEL FROM OPT (OUTDOOR PAYMENT TERMINAL)

**EFTPOS – RD1 FARM SOURCE – FARMLANDS – CARDLINK- AMEX -
MASTERCARD- VISA**

FOLLOW US ON FACEBOOK FOR DISCOUNT DAYS AND PROMOTIONAL INFORMATION

**Gull Eureka
1291 Morrinsville Road
R.D.6
HAMILTON
Tel: 07 824 1773**

Walling **CONTRACTING LTD**



For all your:

- . Ground Cultivation**
- . Planting**
- . Re-Grassing**
- . Under Sowing**
- . Grass Silage**
- . Maize Silage**
- . Digger & Spray**
- Requirements**

Phone Zach: 027 450 0125

EMAIL: walling.contracting.ltd@gmail.com

EMERGENCY EVACUATION PLAN

**Use these tips to get
prepared:**

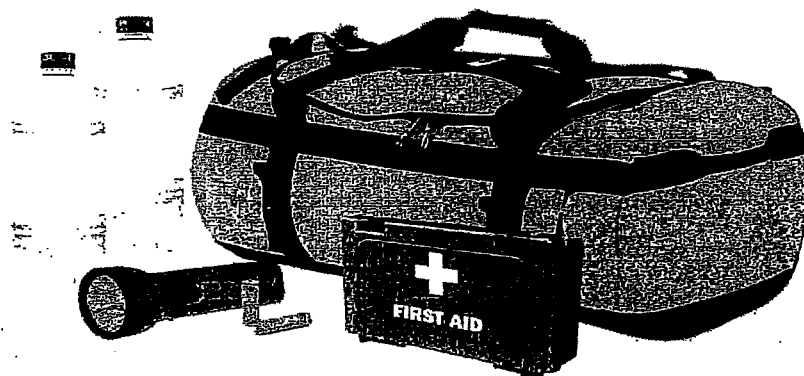
**Gather supplies such as food,
Water, clothing, medications,
batteries and chargers to assemble a
disaster kit.**

Help your neighbours

Share supplies

**Make and keep a list of all emergency contacts. Make sure
all of the family can access these. Save them in your phone**

**Keep neighbours, friends and family informed of your
whereabouts.**



Local Company based at Eureka

Our sheds are all
certified NZ made so by
purchasing from us you
are supporting more
than one New Zealand
Business



Lifestyle
Rural
Industrial
Habitable
Sleepout



Waikato Shed Company

218 Hunter Road

Eureka

07 824 1045

Enquiries@waikatosheds.co.nz

www.waikatosheds.co.nz

WAIKATO SHED COMPANY ✓✓ great sheds, done right!

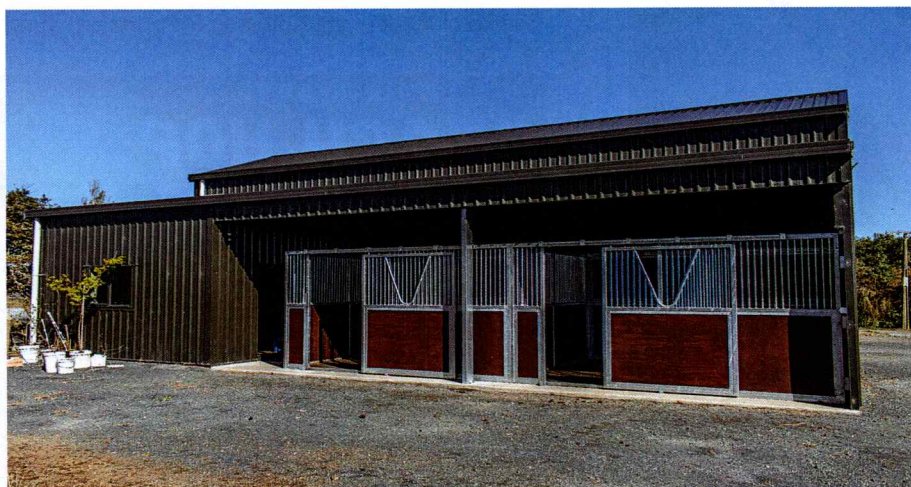
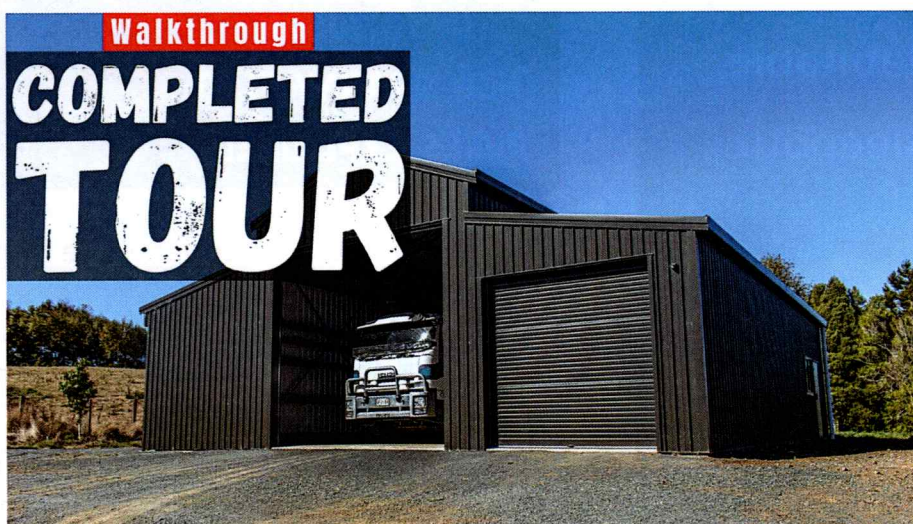
Discover the Charm of a Classic American Barn & Stables

The shed a massive **14m x 14.5m** originally sold at Fieldays came from a **design brief** it had to house everything from a large truck and horse box to fully functional stables and tack room.

This unique build perfectly showcases the versatility of the classic **American Barn** design. Leaving one side left open makes it easy to incorporate stables seamlessly into the structure, combining functionality with eye-catching style.

The stables were expertly completed by New Zealand Equine Solutions.

Watch the journey on our YouTube Channel  YouTube ^{NZ}



Local Company based at Eureka

Our sheds are all
certified NZ made so by
purchasing from us you
are supporting more
than one New Zealand
Business

Lifestyle
Rural
Industrial
Habitable
Sleepout



No Bull Sheds

218 Hunter Road
Eureka

07 824 1045

Enquiries@nobullsheds.co.nz

www.nobullsheds.co.nz

Game Changer Alert! Build a 70sqm Granny Flat No Consent Required!

Big news from the government: starting early next year, you'll be able to build a granny flat up to 70sqm on your property **without needing building consent!**

It's never been easier to boost your property's value, add rental income, or create space for family. You'll still need to follow the Building Code, get a soil report, have plans, and let the council know before and after but that's it.

We're ready to kick off the design process right now! Just let us know your ideas—we'll keep it simple and hassle free.

Check out all the information on our YouTube Channel

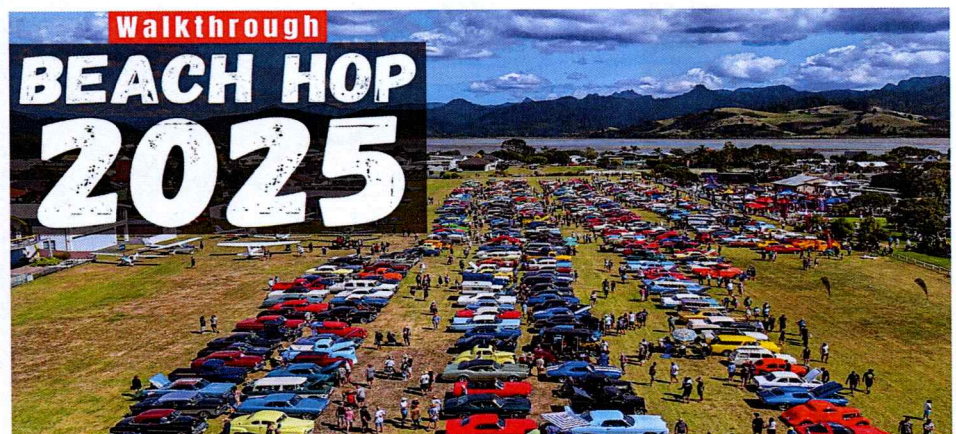


Chrome & Thunder—The Muscle Car Invasion

This year the iconic Beach Hop rolled into the stunning coastal town of Pauanui it was set to be bigger than ever! Curious to see it for himself, **Mark the builder went along to check it out.**

With over 680 classic cars lined up on the airstrip, there's no shortage of chrome, horsepower and jaw dropping style. Car lovers from all over NZ are bringing their best—from vintage cruisers to hot rods and everything in between.

Waikato Sheds— your pit stop for premium, high - performance sheds



Watch the journey on our YouTube Channel

