

Eureka Express

Vol XLV No. 1 Circ 305

www.eurekaexpress.co.nz

February 2024

editor@eurekaexpress.co.nz



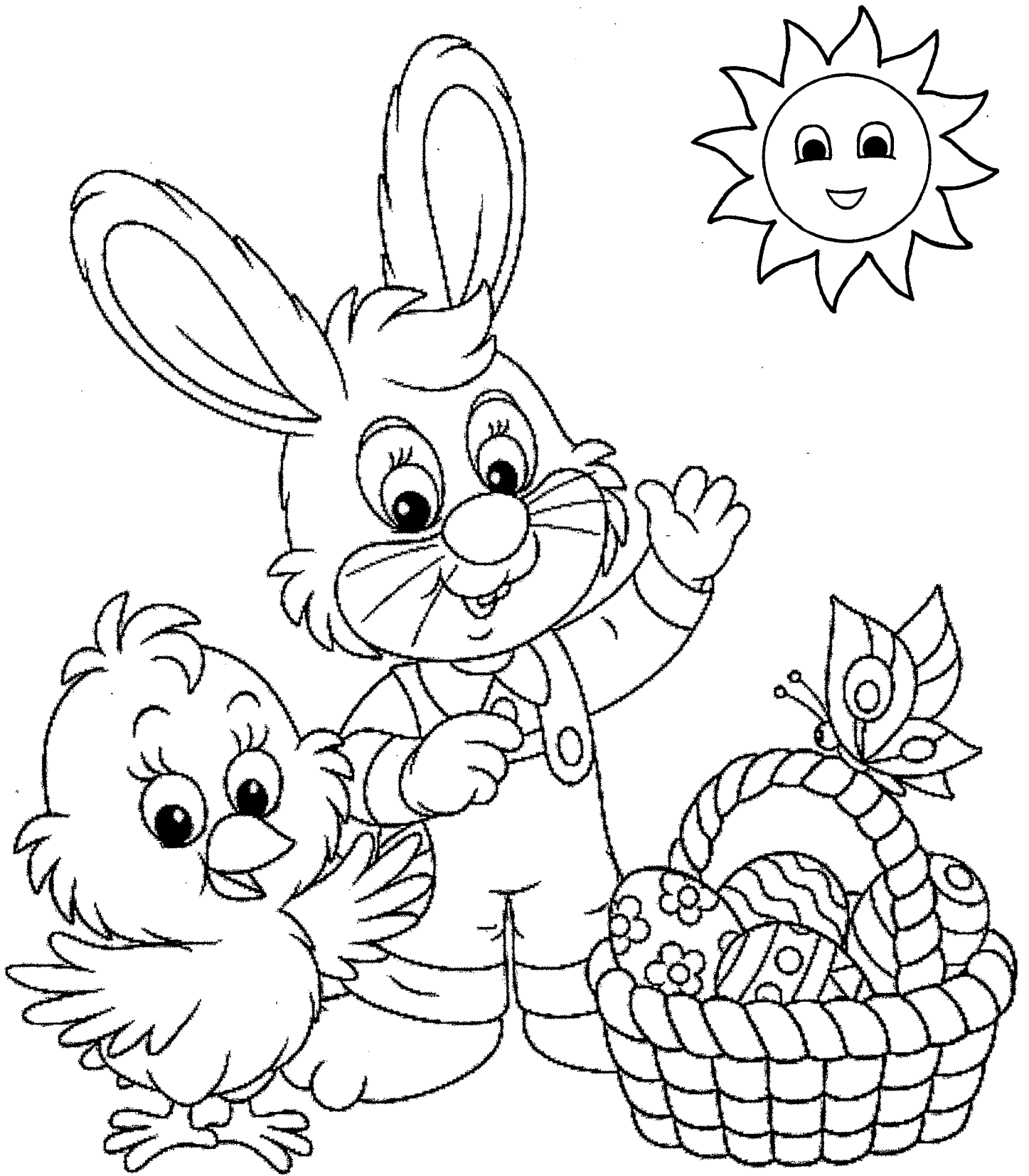
Cover page proudly sponsored by

WAIKATO SHED

COMPANY ✓✓

great sheds, done right!





HAPPY EASTER

EUREKA EXPRESS EASTER COLOURING COMPETITION

For children in the Eureka Express Delivery Area only

Groups: Pre-schoolers
Juniors 5 - 7 years
Intermediate 8 – 10 years
Seniors 11 years and upward

Only one entry per person
Further copies available from Gull Eureka

**Please have entries in to Gull Eureka
By Monday 18th March**

Judging will take place and prize-winners will be advised
prior to Easter

Winners will be named in the April Eureka Express

(Crayons, pencils or felts may be used)

Please complete your details **clearly in pen** (not felt or crayon) so that we can easily contact you

FIRST NAME:

LAST NAME:

AGE:

RESIDENTIAL ADDRESS (including road number)

.....

CONTACT PHONE NUMBER:

FEBRUARY EDITORIAL

Hello Everyone,

Leo and Majella Voorend here, we have been living in Eureka for 3 years last November. We have four adult children, 3 living in Hamilton, Emma a PA/office manager, Nicole a teacher, Scott a builder with his girlfriend Ella and Blair a journalist living at home till June when he heads off on his OE.

Before moving here, we lived in rural Te Rapa poultry farming for 25 yrs. Then went dairy farming in Ohaupo for 6 yrs. We moved off the farm and rented in Hamilton for two years to see if we would like city living. But guess what it wasn't for us. We decided that we loved and missed the rural living and views too much, so we chose Eureka. Also because of its proximity to the many surrounding towns where we both have family living. As I (Majella) was born and raised in Te Puninga on a dairy farm and Leo in Hamilton on a poultry farm.

Leo is now working at Alandale Retirement Village in Hamilton as a Facility Manager; I am a Florist and have recently started my own home based business 'The Flower Nook'. I am also based at Innovation Park in Ruakura every 2nd and 4th Wednesday of the Month. In our spare time we enjoy spending time with the family, gardening, casual biking, and cruising in our 1933 Ford Tudor.

We are happy to have chosen Eureka as our home.

Majalla Voorend

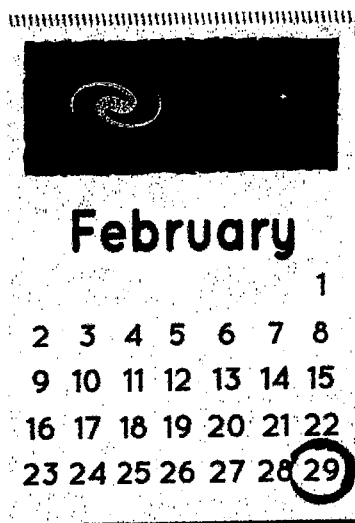


What Is a Leap Year?

The Short Answer:

It takes approximately 365.25 days for Earth to orbit the Sun — a solar year. We usually round the days in a calendar year to 365. To make up for the missing partial day, we add one day to our calendar approximately every four years. That is a leap year.

In an ordinary year, if you were to count all the days in a calendar from January to December, you'd count 365 days. But approximately every four years, February has 29 days instead of 28. So, there are 366 days in the year. This is called a leap year.



Why do we have leap years?

A year is the amount of time it takes a planet to orbit its star one time. A day is the amount of time it takes a planet to finish one rotation on its axis.

It takes Earth approximately 365 days and 6 hours to orbit the Sun. It takes Earth approximately 24 hours — 1 day — to rotate on its axis. So, our year is not an exact number of days.

Because of that, most years, we round the days in a year down to 365. However, that leftover piece of a day doesn't disappear. To make sure we count that extra part of a day, we add one day to the calendar approximately every four years. Here's a table to show how it works:

Year	Days in Year	Leap Year?
2017	365	No
2018	365	No
2019	365	No
2020	366	Yes

Because we've subtracted approximately 6 hours — or $\frac{1}{4}$ of a day — from 2017, 2018 and 2019, we have to make up that time in 2020. That's why we have leap day!

Are leap years really that important?

Leap years are important so that our calendar year matches the solar year — the amount of time it takes for Earth to make a trip around the Sun. Subtracting 5 hours, 46 minutes and 48 seconds off of a year maybe doesn't seem like a big deal. But, if you keep subtracting almost 6 hours every year for many years, things can really get messed up.

For example, say that July is a warm, summer month where you live. If we never had leap years, all those missing hours would add up into days, weeks and even months. Eventually, in a few hundred years, July would actually take place in the cold winter months!

HALL UPDATE

Hello to you all.

So, we start another year, lets hope it doesn't go by as fast as last year. Painting has started in the hall. All new colours, it really looks nice. The kitchen is almost done, the rest of the hall will follow. A huge thank you to Lionel Orr for the time he has donated to paint the kitchen. It has been a huge job, has taken longer than he thought. The heat didn't help either. If you want to check out the new colour, go and have a look. Feed back is always welcome.

Bookings are slowly starting to be made for the year, so we are hoping for another busy year. If you have a club, or hobby and you want to run classes during the week, the hall is available now to do so.

If anyone would like to go and tidy up the front gardens at the front of the hall, in the brick boxes, we would appreciate it. Also, if you have any books laying around, the little library is always needing to be topped up. Remember it is a swap library, not everyone does swap, and that is ok, but we need to keep it full. It is so nice to see that it is being used. Another community asset that is being enjoyed by many. Keep safe, and cool everyone.

Next hall committee meeting is on Wed 3rd April at 7.30. Come along and meet us.

Contact Gayle Orr for any bookings or any other enquiries. 0272917150

Usage	Residents	Non - Residents
Hall per day	\$ 50	\$100
Social function	\$150 - \$300	\$250 - \$500
Children's party	\$30	\$75
Bond	\$400 Secretary's Discretion	\$500 Secretary's discretion

EUREKA EXPRESS - ADVERTISING RATES 2023

Classified adverts Free		
Small business advert x 10 insertions	\$10 per month	\$100 per year
Third of a page x 10 insertions	\$15 per month	\$150 per year
Half of a page x 10 insertions	\$20 per month	\$200 per year

If you would like to advertise, write an article, sell something, or have information you would like to share with the community. Send it to editor@eurekaexpress.co.nz

FAREWELL

Just before Xmas, and in a bit of a rush Maurice Smith who lived on the corner of State Highway and Friedlander moved out of the Community. Maurice and his late wife Margaret moved to Eureka in 1997. They purchased their lifestyle block and quickly became active members of the community. Maurice started his lawn mowing business and really got to know the locals, and during this time he mowed the lawns at the hall. One of his many community contributions. Maurice was also a very active member of the Badminton club which was for many years held at the hall. Sadly, Margaret passed away in 2022, and Maurice decided to make changes in his life. He has moved to Hamilton, purchased a caravan and is planning on travelling the country and enjoying his life. We wish Maurice well in his new ventures.

WELCOME

Welcome to Oliver (Ollie) Hollamby, Jade Thomas and their son Lucas (10), who have moved into Eureka Road.

JUSTICE OF THE PEACE FOR EUREKA

JP. Kevin Deane Please call or text to arrange an appointment.
Kevin Deane JP m 021 281 0068, Kevin is located in Eureka.

DONATIONS ACCEPTED.

We are all aware that the cost of everything is going up all the time. The printing of the Express is also costing more. If you would like to make a small donation, we would be very grateful. We will send you a receipt for your donation so please put your name as a reference. Our bank account number is 03-1559-0042660-00. The name of the account is Eureka Express. We would also like to thank everyone who puts their loose change in the box at the Gull Station, all donations are gratefully received and help towards the rising costs.

LOCAL HISTORY

Copies of the 2004 "School and District Jubilee" booklet are readily available and are free. The booklet contains a synopsis of Eureka's history and development. Contact editor@eurekaexpress.co.nz

REPORTING POSSIBLE CRIMINAL ACTIVITY

The suburban Police Stations are now closed to the public, so criminal activity should be reported by visiting the Hamilton Police Station in Bridge Street or phoning 07 858 6200.

The following website explains the procedure in more detail <http://www.ns.org.nz/index/html/Factsheets/whentocall111>

105 (TEN-FIVE) INFORMATION

Use Ten Five (105) to report things that don't need urgent Police assistance. If you need to talk to the Police call 105 from any mobile or landline. It is a free nationwide service available 24/7. If you can't get through to 105 please contact them online www.police.govt.nz/use105.

The AED (Automated External Defibrillator) is situated at the Eureka Hall. In case of emergency call 111 for an ambulance and ask for the code to open the AED box. The instructions are on the box.



The Eureka Express Committee

They say it takes a village to raise a child, it also takes a community to organise an issue of the Express. Without the amazing teamwork we have there would be no express. I would like to tell you about the Express Team and the valuable contribution they make.

Editor Gayle Orr The editor's role is only to make sure everything is ready for print, and to support the rest of the team. Currently the Editor is doing the secretaries role, taking the minutes of the meetings, organising the meetings etc. I also assist with the final editing of each page and look after the advertisements.

Treasurer Glenys Middlemiss Glenys does an amazing job at keeping the finances in order. She sends out the invoices to the advertisers and ensures they are all paid up. She also pays all accounts as required and presents the accounts to the Reviewer each year.

Article organiser Lin Buckley Without Lin doing her role, we wouldn't have someone to remind our regular contributors to the paper. She sends out reminders of the due date for the articles, and yes, she is the person who you all don't want to get a call from, because she is the person who asks you to write an editorial. Thank you to those who have written one for us. They are all very interesting.

Deliveries Linda Journeaux. Linda keeps the delivery team informed of the printing date, and ensures all the bags are full, and ready for collection by the deliverers, so they can deliver their papers. Linda also helps with editing articles so they will be clear to print and don't take up too much room. She is also our puzzle, colouring page, and front cover designer. Linda is also very generous at Easter and prepares the colouring competition, judges them, and delivers the prizes.

Recipes Sharon Laurent Sharon organises the recipe page. She puts a lot of thought into these to make them not only delicious, but seasonal. It's not always easy to find recipes that are easy to make, so it does take a bit of time and effort.

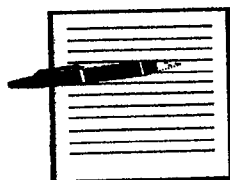
Article Editor Jill McGuire, works her wonders with many of our articles. Editing them to fit and to print more clearly. She is also an all-rounder and helps with printing and distribution.

All these ladies have a delivery area as well, and we have a few other people who collect their bags of papers on printing day and make their deliveries. Without these people the distribution wouldn't happen. They are a very important cog in the wheel of production.

Printing Day is another team. Gayle Orr, Jill McGuire, Linda Journeaux, Lorraine Morrison, and Gail Mayall. It is a long morning to get the 305 copies, printed, stapled, and bagged up ready for delivery. But it is a good morning to have a chat and a catch up with friends or meet new friends if you want to join us. Printing is done at the hall, so if you want to join us come along.

So you see, if you join us you will part of an amazing team who all have the same passion for the Express and who want it to continue for many years to come. We need new blood, new ideas. Your contribution doesn't have to take a lot of time. Everyone on the team are very busy people. So please take a bit of time and think about joining us. We would love to have you join us.

Next meeting is Monday 18th March with printing just before Easter.



Ladies a Plate

Parmesan Courgette Fries

2-3 medium courgettes 2 eggs

2 tsp Italian herbs salt and pepper

1 cup panko breadcrumbs ½ cup grated parmesan cheese

Pre heat oven to 220 C and grease a large baking tray

Slice the zucchinis lengthways into strips about 1.5cm wide

Place the eggs, herbs and plenty of salt and pepper into the bowl and beat well

Dip each piece of zucchini in the egg mixture and then roll in the breadcrumbs pressing to ensure the mixture sticks. Place on the baking tray in a single layer

Bake for 20-25minutes until crisp and golden, turning halfway through cooking

Serve immediately



Pineapple and Cucumber Relish

Recipe can be halved

4 large Cucumbers (approx 14-16 apple cucumbers)

2xtins crushed pineapple 3 cups white vinegar

2 ½ cups white sugar 2 cups water

2 tsp mild curry powder 2 tsp turmeric

2 Tbsp salt 4 Tbsp corn flour

¼ cup vinegar (extra)

Peel cucumbers if desired, slice lengthways, scoop out seeds and discard them. Then slice the cucumbers. Cut onions in half and slice. Combine all ingredients except corn flour. Boil well for a good 20minutes (put lid on to bring to the boil but take it off before moisture drips into pickle and dilutes it) combine corn flour with the extra vinegar, add and stir for 5 minutes or until it thickens.

As a guide 1/2 recipe makes 6-7 jars





Gardening Tips for March

Sow or plant

Seeds to sow –Carrots, Beetroot, Bok Choy, Peas, Silver beet and Turnips
-lobelia, pansies, snapdragons

Seedlings to plant –Spinach, Silver beet, Lettuces, Celery, Cauliflowers, Broccoli and Brussels sprouts.

- Californian poppy, stock, cornflowers, calendulas, sweet peas

You can plant Snow peas from the start of spring to until the middle of autumn in our region and if sow every two or three weeks you will have a continuous supply of pods to harvest

If your runner beans are not finished yet, snip of the top of the plant and it encourages more growth beneath and hopefully more beans.

Autumn Harvesting



Pumpkins are ready to pick when the vine starts to shrivel and die down, Give them the fingernail test too. Most pumpkins are ready when you're unable to pierce the skin with your thumbnail. Cut with approximately 10 cm of vine attached to the stem if you cut to close to the fruit rot can set in.

Pear should be picked when mature, but not fully ripened. They ripen from the core outwards, so if you wait until the flesh gives slightly when pressed it is likely the that the core is already brown and well and truly over mature. The best way to tell is if you tilt the pear horizontally –the pear will detach from the spur with the stem intact.



For grapes taste them! They will not ripen any further of the vine.

Natural Remedy-Apple cider vinegar – to keep fungal diseases away, including brown rot, curly leaf, and black spot, powdery mildew, sooty mould, alliums rust.(garlic onions, shallots)etc For fruit trees, vines and plants Vegetables and herbs including garlic also for roses and other ornamentals.

In a 5 litre pump sprayer – 1 Cup apple cider vinegar to 5 litres water

Spray everything, under, over, through and around everything plants, leaves, fruit, stems, branches, trunk etc

TAUWHARE INDOOR BOWLS NEWSLETTER

Welcome to the first 2024 newsletter from the Tauwhare Indoor Bowling Club. It seems far too hot to be thinking about a winter sport but hope that all of you have had a good summer break. It doesn't seem that long ago I was writing the final newsletter for the 2023 season.

The Tauwhare bowling club has been in existence for many years. Unfortunately, the membership is decreasing every year which is a trend that we would like to reverse so we can save our club. If you are new to the area, or never played bowls before but would like to give bowls a try then come along to the Tauwhare Hall on a Thursday evening. We would appreciate you being there by 7.20pm ready for a 7.30pm start. We have members within the club that are happy to introduce you to the game. We are a friendly, sociable club and there is always lots of laughter and banter. You do not need to bring anything along – just wear flat soled shoes. The evening usually finishes between 9.30 and 10pm

Thursday 7th March is our first club night. It would be great to see all our members from last year come along as well as some new members.

Our aim going forward is to make bowls a fun social evening.

If you would like more information please do not hesitate to contact one of the following people:-

Bev Meads	021 172 7822
Jim & Rosalie Arnold	07 887 4832
John Cottle	07 824 0992 or 027 524 0992

LOCAL RURAL AGENT SERVICING YOUR LOCAL AREA



Kevin **DEANE**
M 021 970 902

Harcourts

Licensed Real Estate Agent

Recycling (taken from the Waikato District Council Website)

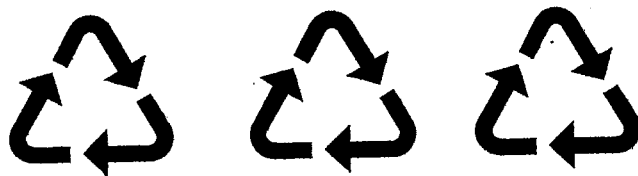
You can place your weekly recycling into a teal green Waikato District Council recycling crate. Each household receives two crates free when they complete a new build, after that, replacement crates are \$22 each. You can put out up to two recycle bins for collection per week.

Recycling must be placed in the placed in the council approved 55L teal crate, unless it is cardboard/paper which can be placed between or under a crate or in a cardboard box not in the crate.

You can replace lost, stolen and damaged crates or obtain two free crates for a newly built dwelling from any one of our council offices, for locations see our [contact us](#) page.

Recycling rules

- Wash clean all items (like you would your dishes)
- Containers 4L and under can be recycled - Excluding Tetra Pak cartons, these must be placed in the rubbish.
- All lids must be removed and put in the rubbish bin (this includes milk bottle lids), these are often different to the plastic material of the bottle itself and get stuck in the recycling processing machinery.
- Please put:
 - Glass in one crate
 - Tins, cans, and plastics (labelled 1, 2 and 5) in the other crate.
 - If you only have one crate, please rotate your recycling. Glass one week and plastic, tins and cans the next week. A second crate can also be purchased from any council office.
- Place cardboard/paper between or under a crate or in a cardboard box not in the crate.
- Cardboard and paper can be no larger than 50cm x 50cm x 50cm. Please keep all cardboard and paper out of your recycling crates.



All clean plastic numbered 1, 2, 5.

TAMAHERE-WOODLANDS COUNCILLORS'

UPDATE FEBRUARY 2024

District News

Long Term Plan and rating

After three open workshops on the Waikato District Council's upcoming Long Term Plan held over the past month, a view is emerging that general rates may need to increase by 13-14% in order to cope with a range of increased costs.

Cost challenges include inflation, interest rates, increasing compliance requirements, and increasing asset maintenance costs, among others. The last LTP planned for inflation levels of 2-3% whereas in practice costs for the Council have inflated at least 17% over the past 3 years, with the current cost of civil construction being 26% higher than three years ago.

In order to keep general rates to the level currently being discussed, the Council has had to find about \$2m in operational efficiencies, and reduce expectations with regards our roading network, for example, for which we are looking at a possible overall budget of \$147m which will afford only a small lift in resurfacing and rehabilitation work.

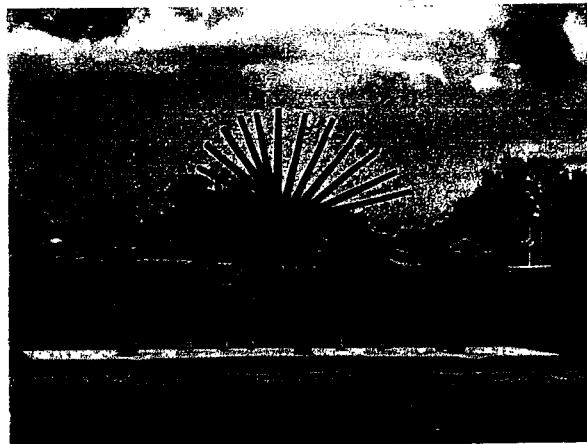
Targeted rates are also set to rise for the same reasons above, and to accommodate the new Government's decision to reverse the direction set by the previous Government on Three Waters. The cost of waste management is also rising and rubbish sticker prices are under review. They have not changed since 2017 when our waste management costs were \$4.5m compared with \$7.5m in 2022 and forward projections of costs rising to \$11m by 2028. Adoption of the draft LTP budget is scheduled for 28 February to allow for public consultation in March-April.

Keeping of Animals Bylaw

Share your ideas with the Council on the Keeping of Animals Bylaw before we revise it through a formal consultation process later this year. Early engagement is open until 31 March. Go to www.waikatodistrict.govt.nz/say-it.

Local projects update:

- **Tauwhare sculpture blessing** – Your Councillors look forward to the blessing and official unveiling of the Tauwhare sculpture next to the Tauwhare War Memorial Hall at 4pm on Saturday 2 March. Representing Tauwhare, 'house or place of rest', it is the realisation of a vision created with the availability of a Waikato District Council arts grant in 2016, and kept alive by the ongoing support of a group of local people. Thanks to artist Marti Wong for the design and Tauwhare Hall chair Lockie Verner for the construction.
- **Tamahere Park toilets upgrade** – extra ramp installed to provide easier access to the disability toilet.
- **Jack Foster Reserve car park, Matangi** – delayed until early 2025 to allow for new classroom construction to occur at Matangi School first.



Telephone Rd rail crossing

A community survey conducted by Waka Kotahi NZTA late last year on the ongoing closure and potential options at the State Highway 1B Telephone Road rail crossing has shown strong interest and a range of views on the future of the crossing. The results of the survey are now available on Waka Kotahi's website. Waka Kotahi will put forward the rail crossing project for funding consideration in the 2024-27 National Land Transport Programme.



Trial bus service for Tamahere, Matangi and Tauwhare Pa - Two new services using a 14-seater Sprinter bus now connect Tamahere, Matangi and Tauwhare Pa residents to the city bus network. Seven round trips a day connect Tamahere and Matangi (route 28) with the University of Waikato transport hub inside Gate 1 off Knighton Rd and provide access to the Hillcrest (10), University (13) and Hamilton Gardens (17) routes as well as the Meteor and Orbiter services. The alternating route to Tauwhare Pa (27) will offer six round trips a day. Waikato District Council will fund the trial for two years to assess passenger uptake. If the trial is successful we hope there might be an opportunity to expand the service. Details are available on www.busit.co.nz.

Creative Communities Scheme – applications open

Round one of the Creative Communities Fund is now open, with applications closing at 5pm on Thursday 7 March 2024. The fund is aimed at supporting activities that celebrate the uniqueness of the Waikato district, its cultural traditions and diversity, including Toi Māori. Art is broadly defined to mean all forms of creative expression, and the goal is to increase participation in the arts sector by the local community.

A one-off funding boost from the Government has enabled the establishment of a Creative Communities Festival Fund to support established festivals that celebrate life experiences, stories, cultures and regional identities of New Zealanders. Go to the Council's website for more information www.waikatodistrict.govt.nz/funding.

Reminder: New phone app for requesting Council services

Download the **Antenna app** from the [App Store](#) or [Google Play](#) so you can tell the Council more easily about things that need attention, like potholes, graffiti or broken streetlights. Open the app, select 'Report it' and follow the on-screen prompts. You can even provide a photo if you want. For urgent matters please phone our Customer Services Team on 0800 492 452.

Contact your Tamahere-Woodlands Councillors:



Crystal Beavis, mob 0275 957 927, email crystal.beavis@waidc.govt.nz
Mike Keir, mob 027 449 3012, email mike.keir@waidc.govt.nz





Barbers pole worm (*Haemonchus contortus*) in sheep and goats.

Barber's pole worm is bloodsucking parasite of sheep and goats. This worm feeds of the stomach lining, causes anaemia and deaths without warning!!!

The symptoms of **barber's pole worm (*Haemonchus contortus*)** infestation in sheep include:

1. **Anaemia:** The worm feeds on the stomach lining, leading to blood loss and anemia. Affected sheep may appear weak, lethargic, and pale.
2. **Bottle Jaw:** This is a swelling under the jaw caused by fluid accumulation due to anaemia. It gives the appearance of a "bottle" hanging from the sheep's jaw.
3. **Weight Loss:** Infested sheep lose weight due to reduced appetite, poor digestion, and nutrient absorption.
4. **Weakness:** Sheep may become weak, exhibit reduced activity, and struggle to keep up with the flock.
5. **Pale Mucous Membranes:** The gums and other mucous membranes appear pale due to anaemia.
6. **Reduced Productivity:** Infected ewes may have lower milk production, affecting lambs' growth.
7. **Death:** In severe cases, untreated barber's pole worm infestations can lead to sudden deaths, especially in young or debilitated animals.

Treating barber's pole worm (*Haemonchus contortus*) in sheep is essential to maintain the health of your flock. Here are some steps you can take:

1. **Worm drenches.** Consult with your veterinarian to determine the most effective treatment
2. **Faecal Egg Counts:** Regularly perform fecal egg counts to monitor worm burdens. This helps you assess the effectiveness of deworming treatments and adjust them as needed.
3. **Rotational Grazing:** Rotational grazing practices reduce the exposure to worm infestations. Avoid overgrazing and allow pastures to rest between grazing cycles, can graze with other species to mop up worm infestations.
4. **Quarantine New Animals:** Isolate new sheep or goats for a period of time before introducing them to the main flock. This prevents the spread of parasites.
5. **Resistance Management:** Rotate between different classes of dewormers to prevent the development of resistance. Avoid using the same drug repeatedly.
6. **Nutrition:** Ensure your sheep receive proper nutrition. Well-fed animals are better equipped to resist worm infections.

Remember to consult with your veterinarian for personalized advice and treatment recommendations. Early detection and proactive management are crucial for controlling barber's pole worm infestations.

BAR LEANER FOR SALE

Bespoke Silky Oak and Kwila bar leaner for sale.
Perfect for any outdoor entertainment area.

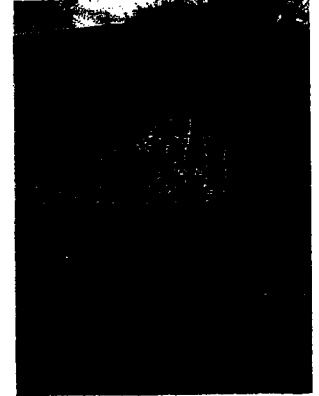
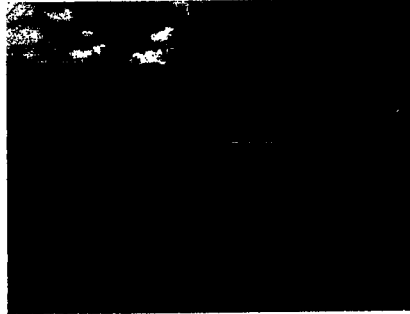
The bar leaner dimensions are:

- 1100mm high
- 1900mm long, and
- 600mm wide (approx).

The surfaces are all finished in oil for easy care.

Price: \$2200.00 ono.

Phone Michael 027 721 6337

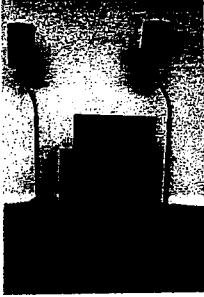


Energy surround sound system

Excellent condition and sound

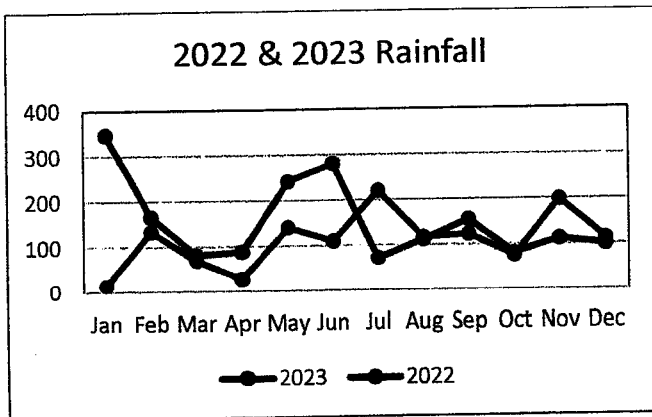
\$600.00

Phone 0274732014



Weather for December 2023		
Rainfall total	100.5 mm	
Rain Total for year	1839 mm	
Rainy days	9	
Most daily rainfall	33 mm	29 th Dec
Highest wind speed	46.8km/hr	13 th Dec
Temp high	28.4 °C	21 st Dec
Temp low	8.2°C	1 st Dec

Weather for Jan 2024		
Rainfall total	86mm	
Rain Total for year	86mm	
Rainy days	7	
Most daily rainfall	40mm	28 th Jan
Highest wind speed	43.5km/hr	1 st Jan
Temp high	31.8°C	31 st Jan
Temp low	8.4°C	2 nd Jan





Pukeko Preschool Newsletter

February 2024

Woohoo we are back at Preschool! It is such a relief for all to be back 'home'. All the tamariki have settled back into centre life and routines and are loving having the freedom and space to explore. The Trust Board, Staff and I will be forever thankful for everyone's flexibility, understanding and patience around the flooding situation.



Our babies are absolutely loving being back in their fresh new space. They are loving the subtle changes, the feel of the soft carpet, and the exciting new variety of resources. They are settling back into the rituals of our room with ease - they are all just loving being back!

Our Preschoolers are loving being back in their sandpit and having their sand equipment to play with.

Thank you,
Jo

Ngā mihi
Jo Morris
Pukeko Preschool
Centre Manager

centremanager.pukekopreschool@gmail.com

07 824 0860





RESPECT - RESILIENCE - RESPONSIBILITY

TAUWHARE SCHOOL

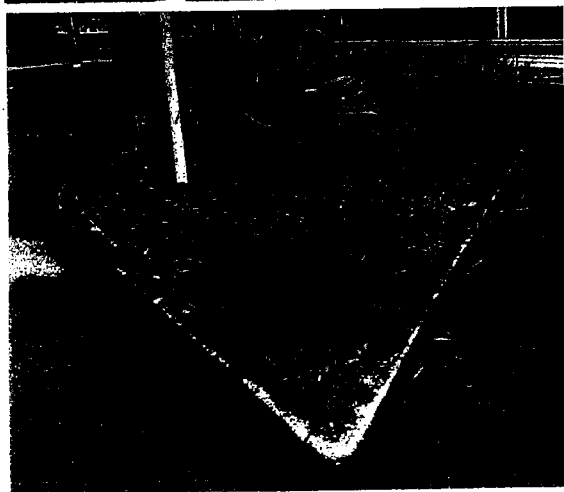
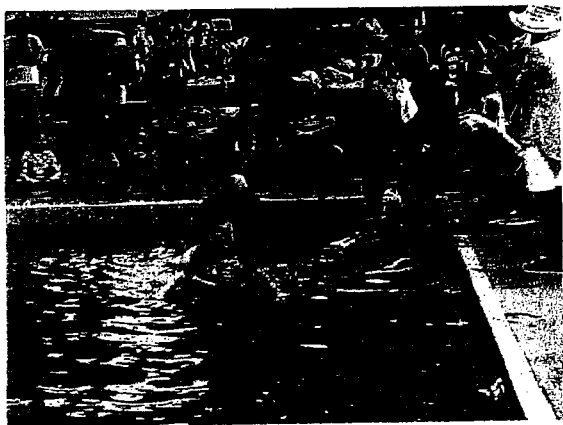
Term 1 - FEBRUARY 2024

WWW.TAUWHARE.SCHOOL.NZ

TOP NEWS

TAUWHARE PICNIC DAY

Thank you to our amazing school community for such an amazing day full of sun, swimming, competition and fun. We are excited to announce place getters for the Cup race. Congratulations to 1st Angie-May, 2nd Laura, 3rd Kaa-Lyn, 4th Rory



New Look Sandpit

Thank you to the amazing Tauwhare Playground who have supported us with new sandpit shade and a much-needed sand top up. The top up has made our sandpit look incredible. Thank you Tauwhare Playgroup.

Thank you Peter

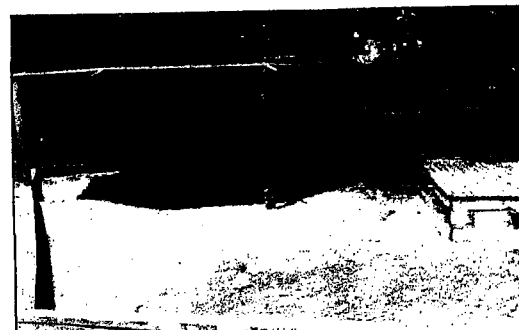
We share our gratitude to Peter Le Heron for his donation of Bark and the use of his trailer for our school gardens. Bark was put into our front gardens as well as through the school from Peter's very kind donation and we really appreciate his support.

POSITION AVAILABLE - AFTER SCHOOL CARE

We are seeking someone to work alongside our ASC Manager Paulette in our After School Care team. This is an after school position in a really valuable area within our school. For enquiries or to apply, please contact Chris May - principal@tauwhare.school.nz

Tauwhare Facebook Page

Alongside the Friends of Tauwhare Facebook page from our amazing PTA, our new school Facebook page will be a notice board for what we have going on at school. Please join us at www.facebook.com/Tauwhare.school.nz



What is a data breach?

Recently there was a super-massive leak of information on the internet's "dark web" (a subject for another article) which contained a mind-boggling 26 billion records from at least 3800 websites, including high-level ones like Twitter and LinkedIn. The content of the breaches was not disclosed, but almost certainly included email addresses and passwords from user's accounts. This sort of thing is called a "data breach". How does it happen? Well, there are often undiscovered or undisclosed security holes in some of the digital infrastructure which makes up the internet. Sometimes the holes occur in particular types of hardware, sometimes software. These can be avenues for hackers to get into the back-end of websites without authorisation or (initially) being noticed.

If a security breach results in the hackers getting confidential data out of a website, this is a data breach. These provide a wealth of information about people which can make them vulnerable to hackers or scammers. What information is actually leaked depends on what you share, and for this reason I advise caution when handing out personal details online. As a general rule, only give as much as is strictly necessary, and even then begrudgingly. Because once the data is out there, you cannot stop it being distributed. For some information like your address, there's not much you can do, but for passwords and the security of other (unhacked) online accounts, your best protection is 2-factor authentication.

An increasing number of web services, such as Gmail and Microsoft accounts, either allow or enforce 2-factor authentication, also known as 2FA. This is when a website sends a text or notification to your phone or email, asking you to verify your identity, sometimes with a code. Which means without access to your phone or email, a would-be hacker cannot get into your accounts even if they have your password. Which reminds me; it's a good idea to change passwords for your most important websites - facebook, email, banking etcetera - every 6 months or so. This ensures that even in the event of a major data breach which discloses your password for a given website, the information doesn't stay current for long and can't be used 6 months down the track. If you're worried about whether your data may've been involved in a breach, go to haveibeenpwned.com and enter your email address.

This sort of activity will increase as time goes by. Though best efforts are being made to ensure the online safety of accounts, and the internet as a whole is much safer than it once was, the fact is that the internet is a building-block-like structure, comprising hundreds of different technologies, each of which interact with each other in ways that can be hard to predict. This complexity is what gives an attacker an advantage, because with an almost infinite number of combinations of technologies and techniques, there are a vast number of potential security holes to uncover.

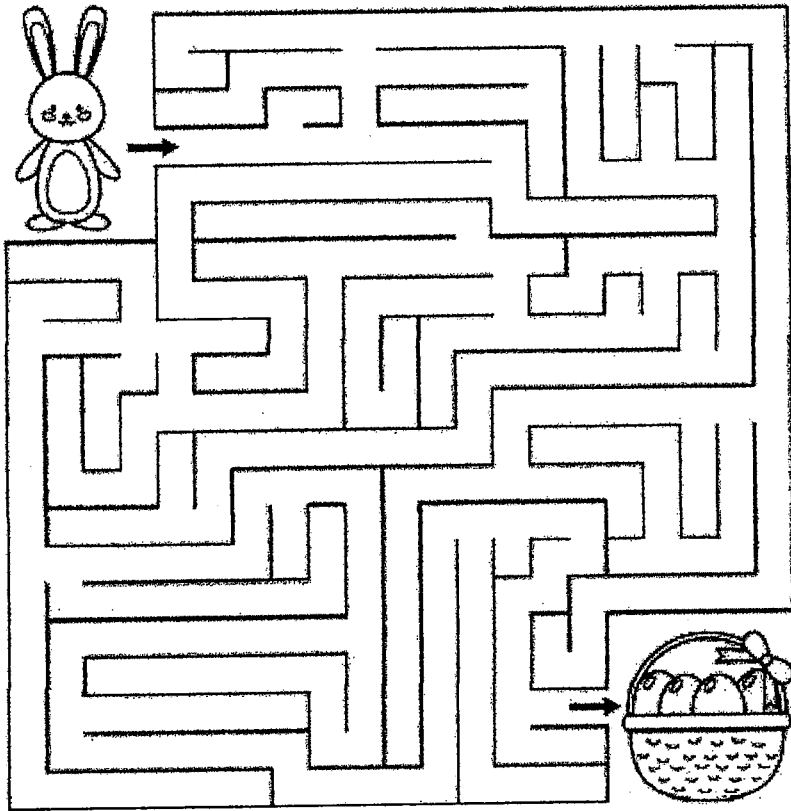


Bentley Home PC Support

You can view all past articles online at <https://homepcsupport.co.nz/articles.htm>

--

Matt Bentley
Bentley Home PC Support
452 Tauwhare Rd, Matangi, Hamilton
www.homepcsupport.co.nz
0211348576



$$\text{flower} + \text{flower} + \text{flower} = 36$$

$$\text{flower} =$$

$$\text{bunny} + \text{flower} + \text{flower} = 39$$

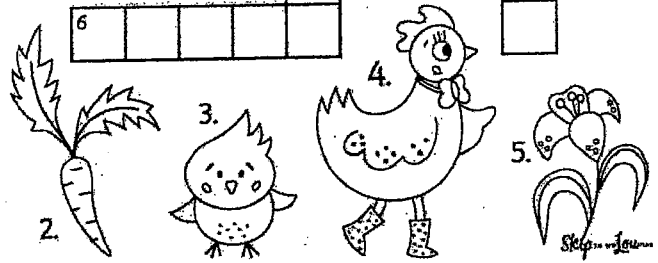
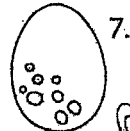
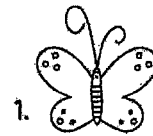
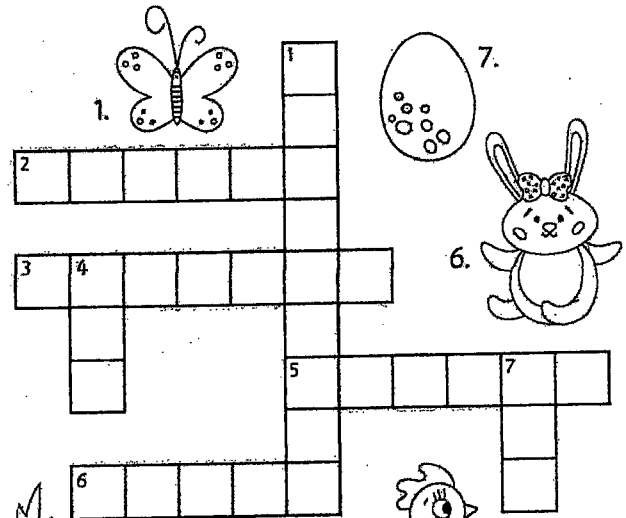
$$\text{bunny} =$$

$$\text{egg} + \text{egg} + \text{bunny} = 35$$

$$\text{egg} =$$

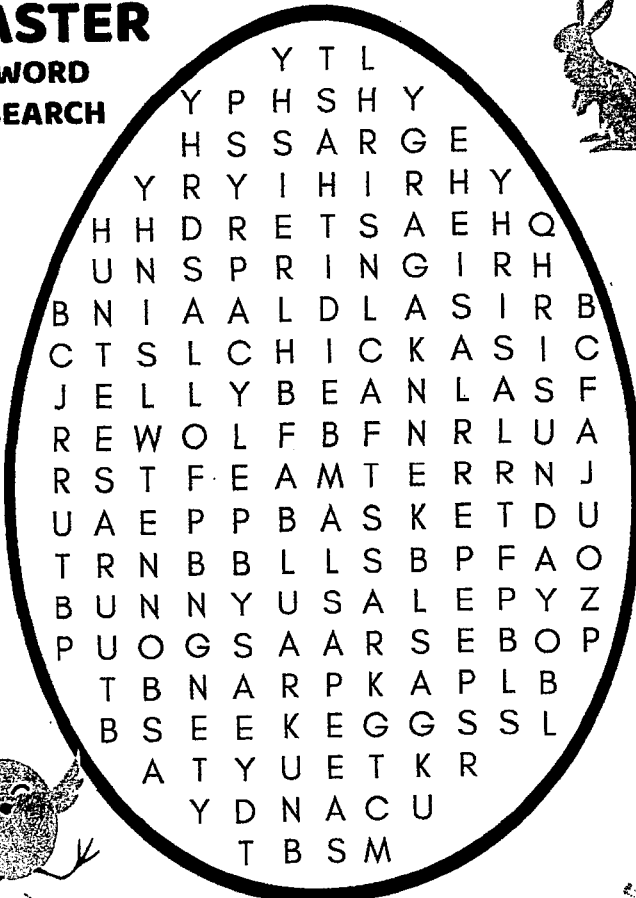
$$\text{egg} \times \text{bunny} + \text{flower} = 162$$

12, 15, 10



1. butterfly 2. carrot 3. chicken 4. hen
5. flower 6. bunny 7. egg

EASTER WORD SEARCH



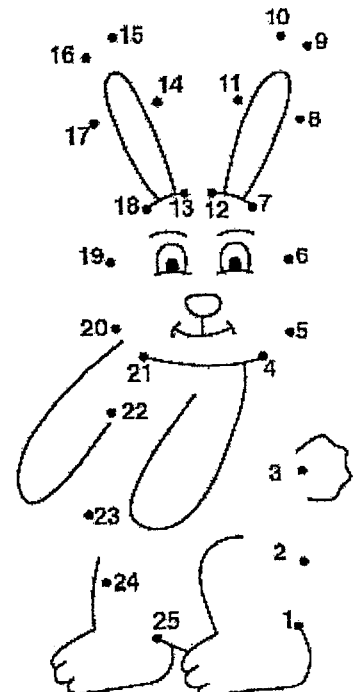
- BUNNY
- BASKET
- GRASS
- BONNET
- EGGS
- SPRING
- CANDY
- SUNDAY
- CHICK
- FLOWER
- HUNT
- PEEPS
- JELLYBEAN
- EASTER
- DYE
- LAMB



What kind of bean can't grow in a garden?
A jelly bean

What's an Easter egg's least favourite day?
Fry-day!

What is the Easter Bunny's favourite kind of music?
Hip-hop!





CTAS



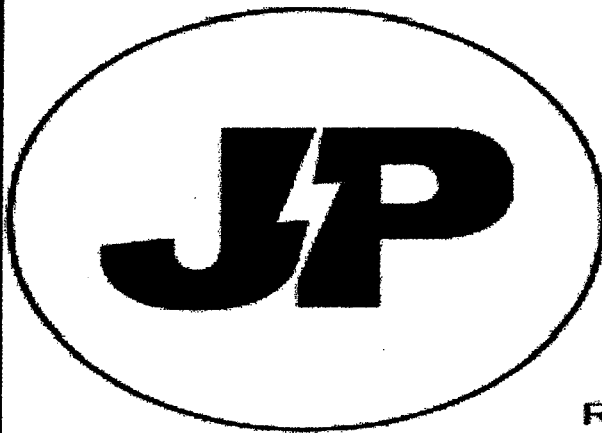
100% NZ Owned and Operated

- TXT and Email Alerts and Reminders
- TXT Shortcodes for your business or club
- Flight Status by TXting your Flight to 8808
- Live Video and Audio Streaming on the Internet

Reminders by TXT and Email

YOUTXT™

www.ctas.nz | sales@ctas.nz | www.youtxt.nz



JP ELECTRICS

EST 2022

JAMES PALMER

REGISTERED ELECTRICIAN

⚡ 027 756 6804

⚡ james@jpelectrics.nz

⚡ www.jpelectrics.nz

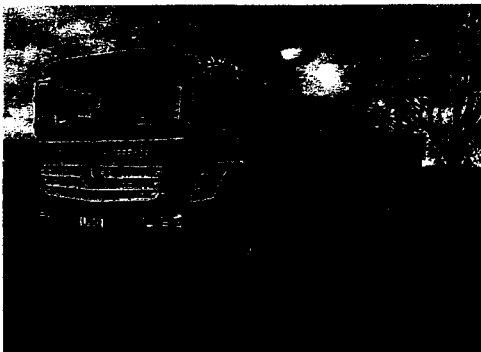
Residential | Commercial | Heat Pumps



QUALITY ASSURED
MASTER
ELECTRICIAN

COMPUTERISED BULK SPREADERS LTD

Cartage and Spreading



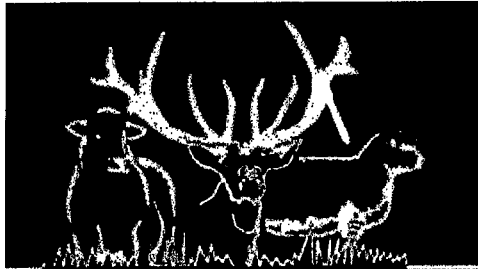
FERTILISER, LINE, UREA SPECIALIST

Competitive Rates

PETER JONES

027 496 3370

***37 years service in the Morrinsville district ***



TAUWHARE HOME KILLS

TREVOR & LEONIE BRUNTON

1126 TAUWHARE ROAD

PH: 07 824 0880

FX: 07 824 0809

FRESH APPLES & PEARS



NEWSTEAD ORCHARD

552 Morrinsville Road

**Open Tues—Sat
Seasonal
W J McMiken & Co
Morrinsville Road
Tel. 856 4478**

EUREKA POULTRY FARM

13 Hooper Road
Ph 824 1762
NIC & MARIA STOLWYK
Hobby Hens



Young pullets from
5 weeks to point-of-lay
Great for lifestylers
Bagged up chook manure
Hours Mon-Sat 8-6

PASTURE RAISED EGGS

Keep it local with pasture
raised fresh eggs delivered
to your door every week.



\$12

Mixed Size Dozen

Spots on our weekly delivery
subscription go quick so get in
touch to reserve yours!

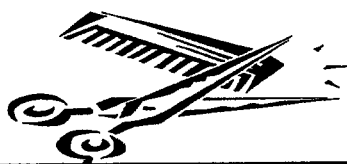
Call Sonay
Hukuletta Farm **021 141 8640**

HAIRFIELDS

HAIR DESIGN
95 HOOPER ROAD
Sharon Laurent

Full salon facility in Eureka
Total hair care professional
and many years experience
Agent for Nutrimetics

Open Tuesday to Thursday
Late nights Tues/Thurs
Tel. 8241712
or 027 280 5978



**Servicing and installation
on all types of pumps
Full water treatment
service available**

DAREN ROSS
Ph: **8241726**
Or **0274 346 571**
Email:
admin@rosspumps.co.nz

LAWNMOWING & GARDENING SERVICES

Professional lawn and garden care
services



Alex & Sharyn Macdonald

For free no-obligation quote:

Phone 027 479 7282

or 027 308 6781

E::macdonaldmowing@gmail.com

www.lawnandgradenservices.co.nz

Residential—Rural—Commercial
Spraying—Fertilizing—Weeding

**If you need this
AED
You Need an
Ambulance!!!**

Call 111

**Ask for Ambulance
Give the location of
this box as shown
below. Ambulance
control will give you
the code, Remove the
cover, Enter Code,**

EUREKA HALL HIRE

Weddings, parties,
Meetings, a great
venue.
To Book

Email
eurekahallwaikato@gmail.com



161 Morrinsville Road, Hamilton, 3286

Phone: 07 856 4522 Email enquiries@newsteadvets.co.nz

Website: www.newsteadvets.co.nz

Newstead Vets offer a full

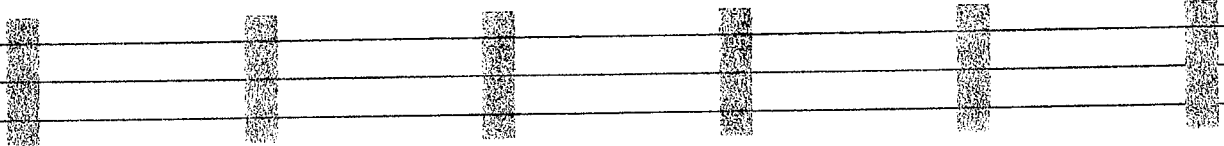
range of veterinary services for small animals including:

- * Consultations (by appointment only)
- * Soft Tissue and Orthopaedic Surgery
- * Digital Radiography and Ultrasonography
- * NZVA Microchipping Accredited Practice
- * Nutrition and product Advice
- * Rural location with ample parking
- * Referral to Specialists
- * PennHIP Certified
- * Full Laboratory Service
- * Hospitalisation
- * Cremation Service
- * Convenient Online Shop

G&M FENCING

WAIKATO WIDE

For all your rural, lifestyle and residential fencing needs



Contact Mitch

0278418055

gandmfencingnz@gmail.com

THIS SPACE COULD BE FOR YOU.

YOU CAN ADVERTISE YOUR BUSINESS RIGHT HERE.

1/3 OF A PAGE PER ISSUE IS \$15 PER MONTH OR FOR THE YEAR \$150.

LARGE AREA COVERED BY OUR DISTRIBUTION.

TO BOOK THIS SPACE CONTACT

editor@eurekaexpress.co.nz

Dig It Earthworks

EARTHMOVING & EXCAVATION

- House Pad & Driveway Prep
- Driveways
- Section clearing
- Footings & Post Hole Boring
- Landscaping & Lawns
- Farm Maintenance & Races
- Truck & Labour Hire
- Calf/Goat/Pig/Chicken Shed Clearing

CONCRETE LAYING

- House & Garage Pads
- Driveways
- Sheds/Workshops
- Patios
- Footpaths



Give Liam a call today for a free quote on 021 02839174



Providing Professional Agricultural Contracting Services



Services Include:

- Baling, Round, Big Square & Conventional
- Spraying
- Grass Silage – Chopper & Loader wagons
- Maize Silage – Cultivations, Planting & Harvesting
- Bulk & Hiab Cartage

Call Jeremy Rothery for inquiries or bookings 027 526 2441

www.jclag.co.nz



GULL EUREKA

**PETROL – DIESEL – LPG - OILS & LUBRICANTS
FARM SUPPLIES – GROCERY ITEMS**

SHOP HOURS: MONDAY TO FRIDAY 7:30AM – 6:00PM

**AND NOW: FUEL 24 X 7 PETROL & DIESEL FROM OPT (OUTDOOR
PAYMENT TERMINAL)**

EFTPOS – RD1 FARM SOURCE – FARMLANDS – CARDLINK

AMEX – MASTERCARD – VISA



us on Facebook for discount day and promotional information

Walling
CONTRACTING LTD



For all your:

- Ground Cultivation
- Planting
- Re-Grassing
- Under Sowing
- Grass Silage
- Maize Silage
- Digger &
- Spray Requirements

Ph: 07 824 0894

Rebecca: 027 493 4476

Email:

walling.contracting.ltd@gmail.com



Local Company based at Eureka

Our sheds are all made from NZ Steel and certified NZ made so by purchasing from us you are supporting more than one New Zealand Business

Lifestyle
Rural
Industrial
Habitable
Sleepout

Waikato Shed Company

218 Hunter Road
Eureka
07 824 1045

Enquiries@waikatosheds.co.nz

www.waikatosheds.co.nz

WAIKATO SHED C O M P A N Y ✓✓

great sheds, done right!

Kitset Magic in the Coromandel

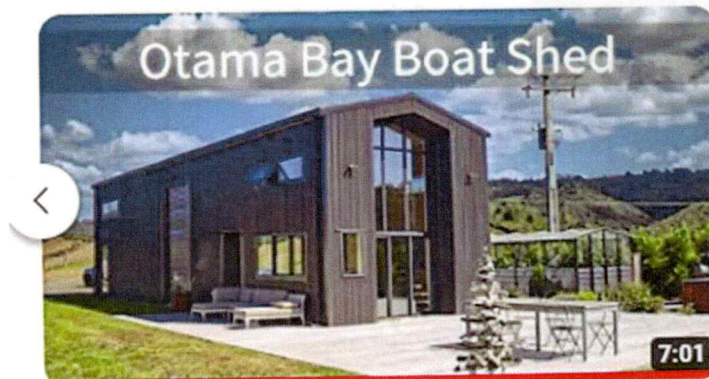
This 5.3m Wide, 5.1m High and 19.5m Long shed was sold as a Kitset. Built by our Client and his son, they must be so proud of the finished project.

Our client came to us with a hand drawing of his vision for something special to complement the amazing landscape surrounding their little bit of paradise.

The hand drawing was taken by Jason and translated into an actual set of plans which captured perfectly the Norwegian influenced design the client had in mind.



Take a Tour with Jason and learn more about this impressive building on our YouTube channel



Epic Modernist Coromandel Boat House - Full Tour in Otama Bay



Local Company based at Eureka

Our sheds are all made from NZ Steel and certified NZ made so by purchasing from us you are supporting more than one New Zealand Business

Lifestyle
Rural
Industrial
Habitable
Sleepout

No Bull Sheds

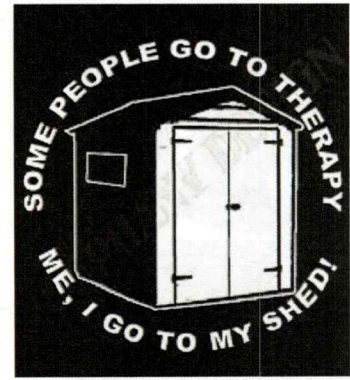
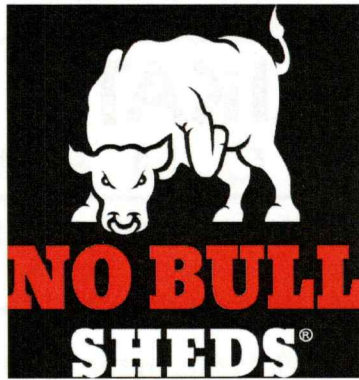
218 Hunter Road

Eureka

07 824 1045

Enquiries@nobullsheds.co.nz

www.nobullsheds.co.nz



Tough Kitset shed systems with a Keep it Simple approach

Getting a great result starts with a simple process. We have a five-step process that we never stray from

1. Pick the style of shed you want.
2. Talk to us and we will customise it to suit your needs.
3. We'll organise the plans, deal with council and initiate manufacture of the kitset components.
4. We will deliver your shed.
5. You build your shed - with help from us if you need it.



Clear Communication

We listen to your requirements, keep in touch and communicate throughout the entire process of your shed build project.



Proven System

Strong, durable components and connection systems from reputable suppliers that are properly engineered and fit for purpose.



Focussed Design

Using our extensive knowledge and eye for detail, we ensure the shed will do the job required, customizing to meet customer needs.



Reliable Back-up

We are committed to a great outcome. With over 15 years in the business, we stand behind our buildings to provide peace of mind.

Steel Rocks

