

Eureka Express

Vol XLIV No. 7 Circ 315

www.eurekaexpress.co.nz

August 2023

editor@eurekaexpress.co.nz



EDITORIAL

When I was first asked to write an editorial, I really did not know what to write about, I spoke to a few people and then thought why not talk about my passion and advocate for some of our most vulnerable people, our elderly people.

But first I will introduce myself, my name is Nicola Orr and I live on State highway 26, I have been in and out of Eureka for about 17 years, with this stint being here for 10 years and counting. My husband Steve is the property manager of Scared Heart Girls' College in Hamilton, and has been there for about 17 years, together we have 5 children and 2 grandchildren. Our 2 youngest children RJ and Charli go to Newstead school which I might add is an amazing school.

I am the clinical manager for Kingswood rest home in Morrinsville and Matamata and have been in this job for coming up 4 years. Kingswood Morrinsville has 4 units all with different types of residents. We have an all-males unit which is the only one like it in the Waikato, it was set up for sexually inappropriate men and ones that have behavioral concerns related to dementia. We have a small 12 bed mixed dementia unit, a 16 bed Rest home, and last year we opened a 30 Bed Psychogeriatric building.

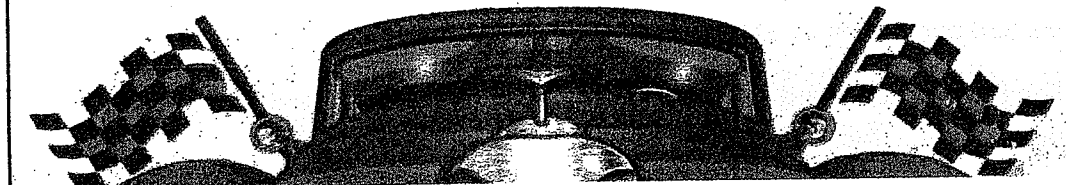
Aged care still has a stigma around dementia. When people think of Dementia, they think of people sitting around dripping and not doing much, this is not how it is, dementia residents have a lot to offer us, and we are able to learn a lot from them. Unfortunately, dementia is a terrible disease and yet is poorly understood, causing people to have false beliefs within the community. Dementia will affect all of us sometime in our lives, whether it be through family, friends or just someone we know. It has most likely affected many of you in our community on a personal level.

In my 4 years I have seen significant growth within Kingswood and the aged care sector. Kingswood was mentioned by Ashley Bloomfield back in 2020 when we kept COVID out of our buildings by using our strict infection control program and have recently been awarded a prestigious award by Chris Hipkins recognizing's Kingswood work in keeping COVID out. With the growth comes challenges and this is in the form of the Nursing shortage, as I am sure you have all heard about this in the news. Being able to recruit nurses especially within the age care sector is proving to be a gigantic challenge, competing with private companies and Te Whata Ora makes small, owned care homes struggle to recruit and retain nurses. Age care nursing, although emotionally and physically draining is also rewarding and fulfilling, it has taught me the real meaning of compassion and empathy which is something not all people learn through their lives.

Kingswood has a classic car show on this weekend 2nd September 11am -2pm and we would love for you all to come and see our beautiful facility and enjoy the cars and food. I will be there and would love to have a chat and show you around. So please come on down and enjoy.

SATURDAY, 2nd SEPT, 11AM - 2PM

**VINTAGE
CAR SHOW**



HALL UPDATE

Hello to you all.

The Hall Committee AGM was held on Thursday 24th August, and was followed by a presentation by Crystal Beavis our District Councillor about the District Emergency Plan. Only 10 people turned up to the evening with a couple of apologies. Gayle Orr has been re-elected as the Chairperson, for her 6th year, Shaun Bartlett is going to continue to be the Treasurer for his 2nd year, but there was no secretary elected. We really need someone to take on that role of Meeting Secretary. This is all that is expected of this role, to take the minutes of the meeting, type them up and forward them to the committee. If anyone is out there that would take on this role, we would love to hear from you. The committee only meets a few times per year so it isn't a huge job, and isn't very time consuming. Currently Gayle is doing the roles of Chairperson and secretary and taking all of the bookings for the hall. A huge job for one person, and she really needs help.

The committee are still looking for someone to check over the books for the last 2 years. This is not a full audit, just a viewing of the books to make sure everything is correct. If you could help us with that we would be so grateful. The books are all done through Xero so it is all pretty easy to follow. Please contact the Treasurer Shaun Bartlett and chat to him. His email address is shaun.bartlett@outlook.com.

There will be more follow up on the Emergency Response Plan as it comes together. A meeting will be held with a few people in the district and Crystal Beavis and someone from the Council Emergency Dept, and this will get things underway. Keep watching for more information.

It is so nice to see the sun shining more and more now. It makes us all feel much happier and then we look out of the window and see all of the work that needs doing after the winter. Always something to do. Enjoy the sun, and keep warm.

Contact Gayle Orr for any bookings or any other enquiries. 0272917150

Usage	Residents	Non - Residents
Hall per day	\$ 50	\$100
Social function	\$150 - \$300	\$250 - \$500
Children's party	\$30	\$75
Bond	\$400 Secretary's Discretion	\$500 Secretary's discretion

EUREKA EXPRESS - ADVERTISING RATES 2023

Classified adverts Free
Small business advert x 10 insertions \$10 per month \$80 Per year
Third of a page x 10 insertions \$15 per month or \$120 per year
Half of a page x 10 insertions \$20 per month or \$160 per year

the express email address. The Express is printed Feb - Nov each year. All articles should be sent to the Editor by the 20th of each month. editor@eurekaexpress.co.nz

Yes, we have a website and now you may also read and access our local history book "Eureka 1874 - 1984" on the website.

DID YOU KNOW?

Not everyone in the community use Facebook or social media, and not everyone reads the Express paper edition. So, if you have something to say we welcome your input in the Express. You may have something to sell, a fund-raising event coming up, know someone who has done something amazing and you want the community to know. Well, let the Express committee know and we will publish it. We love to know who is in the community and what an amazing place it is to live. I see so much on FB but not so much in the Express. Do you have a small business you would like to promote, one that you work from home. Tell us about it, let the community know so we can perhaps purchase your product or support you in whatever way we can. I know there are so many talented people out there, don't be shy, come forward and introduce yourself. We can't wait to hear from you.

DONATIONS ACCEPTED.

We are all aware that the cost of everything is going up all of the time. The printing of the Express is also costing more. If you would like to make a small donation, we would be very grateful. We will send you a receipt for your donation so please put your name as a reference. Our bank account number is 03-1559-0042660-00. The name of the account is Eureka Express. We would also like to thank everyone who puts their loose change in the box at the Gull Station, all donations are gratefully received and definitely help towards the rising costs.

On behalf of the Express Committee, I would like to send out a huge thank you for the donations we have received. We really do appreciate your help.

BOOK FAIR

The next book fair at the hall will be on Thursday 31 August. Plenty of choice for a good read. Books \$3.00.

SNIPPETS

Over the last year the Express Committee have been making decisions on how to continue printing the Express. We have looked at a few different options and came up with the option to continue to lease the printer and update it. The new printer was finally delivered in time for the last print, and after a few hiccups we got the print completed. Since then, we have had a bit of training, and are more than ready to go forward with the updated machine. The printer is now located at the hall, and so is more accessible to get some copying done if you need it. The logistics of how we will do this is still being worked out, but watch this space for further information. We also want to invite anyone who would like to join us on printing day to come along and have a natter and a coffee. We print on the last Thursday of the month, starting at 9am, we are usually all finished and ready to start delivering by 12pm. It is very social, and another way of getting to know people in your community. If you are not sure of the date of printing, then email us editor@eurekaexpress.co.nz and find out.

PHONE LIST

It is time to renew our local phone list. If you are new to the neighbourhood and would like to have your number on our phone list, please email your details to us. If you notice anyone on the list who has now left the neighbourhood, please let us know, and if you no longer have a land line and only a mobile then we would like to amend your details if you want us to. Remember, the phone list can be a valuable asset in the time of an emergency as well. Civil defence can use it to make sure you are all safe.

FREE

Trellis 2 x 1800 x 1m 4 x 1800 x 2100 3 more for repairs.

If you are interested contact Maurice Smith 0276150719

Farming Through Tough Times

The 2023/24 season is shaping up to be a tough one financially for farmers. The recent AgFirst financial survey of dairy farmers in the Waikato/Bay of Plenty indicated a payout of \$8.40/kg MS is needed for breakeven, so the expected payout of \$6.75/kg MS is well adrift of this. Similarly for sheep & beef farmers, normally schedules are at their peak at this time of the year, but currently are very soft, and likely to reduce.

This is something of a perfect storm – in addition to reduced payouts & schedules, over the last 2 seasons on-farm cost inflation has increased dairy costs by 24% and sheep & beef costs by 20%. Added to this interest rates have doubled.

This means farmers need to understand and plan for the year ahead. Recommended steps for this are:

- Do a budget for the year ahead. This is vital in order to understand where the farming business stands, and to identify possible areas to reduce expenditure. If you're not measuring it, you can't manage it.
- Talk to your accountant about revising provisional tax – this is now likely to be minimal if not zero.
- Talk to your bank manager – if you haven't deferred principal debt repayments, you probably will need to.
- Revise any capital and development spending – this may well need to be deferred for the year.
- Revise your operating expenditure. Reducing farm working expenditure is never a great idea, but sometimes may be necessary.

A key aspect is to talk to your professional advisory team to canvass ideas and options. And above all, talk to your bank!

This is an opportune time to introduce the Waikato Hauraki Coromandel Rural Support Trust, of which I am a Trustee. The Trust is a charitable organisation set up to work with the rural community when times are tough on the farm or in the family. It has a number of facilitators that fully understand the rural sector, and who can provide a one on one service which is free and (obviously) confidential.

The facilitators are not advisors – they are trained to help find options to manage the challenge in question. Often all that is needed is someone to talk to and listen to your issues. Often, they may facilitate a referral to the right professional help, such as farm management, mentoring, or counselling.

The Trust can also work on your behalf with financial organisations, government agencies, and farm advisors. As part of this the Trust oversees the Farm Business Advice Support Funds, which can provide funding for financial or business advice from an independent consultant. It can also assist with debt mediation under the Farm Debt Mediation Scheme and Hardship Fund.

For further information try: <https://www.rural-support.org.nz/Regions/North-Island/Waikato-Hauraki-Coromandel>

Or ring 0800 787 254 (0800 Rural help)

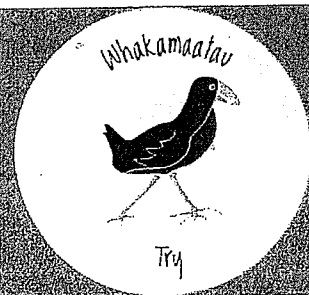
Phil Journeaux



Rural Support
WAIKATO - HAURAKI - COROMANDEL

Tauwhare School

RD7 Hamilton 3287 New Zealand
e admin@tauwhare-school.nz
t 07 824 0864



Accomplished Learners Striving for Success in Tomorrows World

Principal Message

We have reached the halfway mark of the term. There has been so much that has happened already, and there is still so much more to go. Daily, I admire our children's effort and perseverance in taking on challenging learning. It is important for me to thank our community of readers, who are spending time in class with children reading with and reading to. The children are loving having you being part of the learning in class, you are superheroes in their eyes.

"Set your goals high, and don't stop till you get there."

Lunchtime Fire Display

We were treated to a lunchtime fire display when Te Ahi Ora were at school this term. The children learnt how to move the staff around their bodies and even had a go with some fire on the staff during the evening sessions with their parents.



Life Education With Harold

Every class went to see Harold in the Life Education van. The classes who had been to Harold have enjoyed every moment of their visit and their new learning. "Harold is fun and adorable and we laughed at his jokes, even though they were only a little bit funny." Said Vivianne of Room 5. A lot of the learning was about how we can be kind and respectful to others, about being Passive, Aggressive or Assertive, and being either a bossy boss or a leader. Abby the teacher in Life Education was amazing and taught us a lot.



Speeches In Class

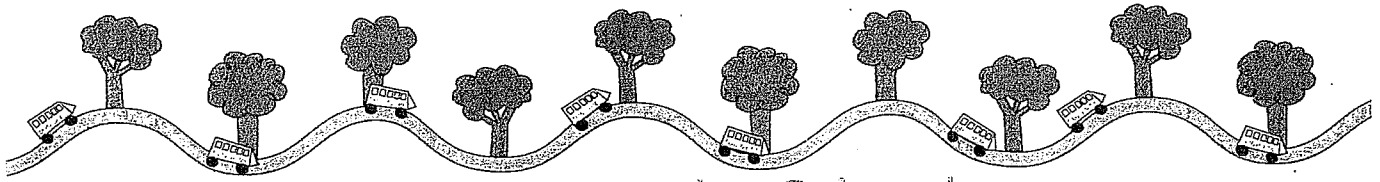
"I love speeches because you talk about something you are passionate about," says Madaline from Room 4. Room 4, 2 and 1 are all completed speeches in class this term. Our Year 5 and 6 children competed in our Semi Finals where parents were able to come and see the speeches as well. This Friday, 25th August, is the Tauwhare senior speech finals. Our top speeches for this year present their speeches for Rotary as well as present at our end of year prizegiving. Well done to everyone who presented a speech this year for your bravery and your commitment to your learning.



Tauwhare News Team – Isla, Crystal and Emily

Enviro Group

Amber, Niyati, Elizabeth and a group of students from Room 5 and Room 4 are the founders of an Enviro Group. They have planted vegetables, walked around the native bush, and are learning and teaching the school about nature. They are getting great ideas to help save the environment and looking after the gardens every day.

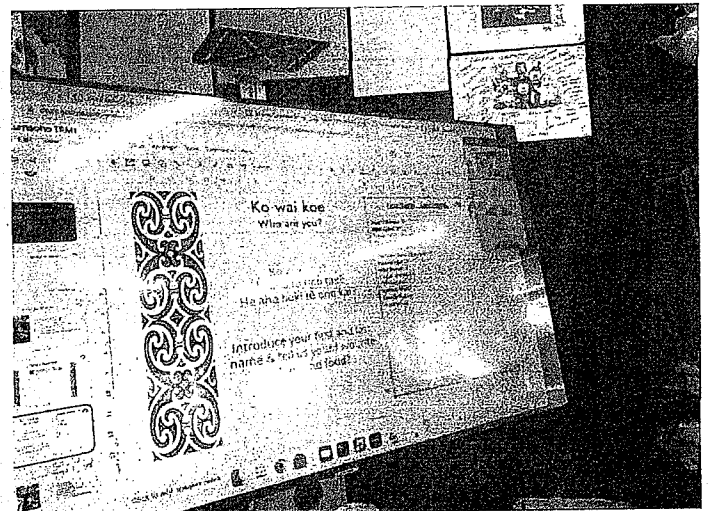
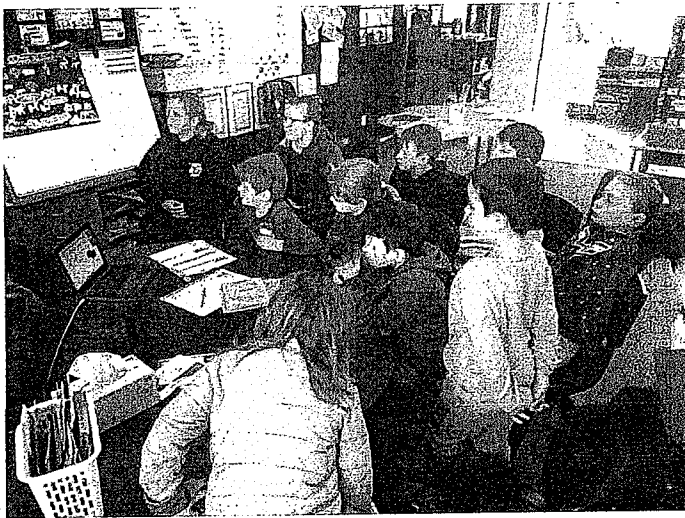


Motumaoho School

2101 State Highway 26, RD2 Morrinsville 3372 | office@motumaoho.school.nz | p. 07 8897597

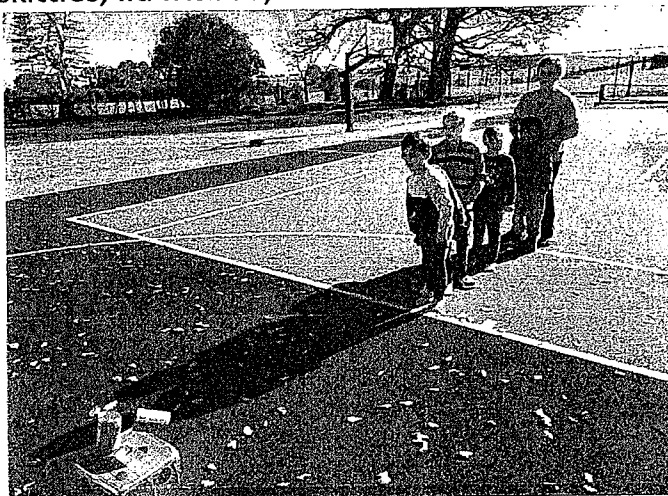
Ruma Tui

On Monday 14 August, Ruma Tūi had our first Te Reo Māori Zoom session which will continue for the next 10 weeks. These sessions are presented by Kōtui Ako, previously called Virtual Learning Network. We were lucky to be accepted in this funding initiative by the MOE aimed at reducing barriers for small rural schools in gaining equitable access to a rich curriculum through online learning. It was a new experience for us, and we enjoyed getting to know our teacher, Whaea Tatyana, who will be presenting the class each week.



Ruma Piwakawaka learn about reducing Waste

Last term we were learning more about reducing, reusing and recycling waste. Vicki from Zero waste came to teach us about wants and needs and what we can put into the compost and recycling bins. She had games for us to play. All the items were reused e.g. sock balls, milk bottle skittles, lid frisbee, etc. Have a look at us having fun.



facebook.com/motumaoho.school

Website: www.motumaoho.school.nz



Pukeko Preschool Newsletter

August 2023

Kia ora and welcome!

You can expect a newsletter every month which will provide you with updates about what is going on in the Preschool and any other information that we need to share with you.

Jo Morris

Pukeko's Notes

We had the Annual General Meeting this month

We now have a newly appointed Board:

Emma Elliott has stepped down as Chair Person

Hayley Ferrier-Kerr has been elected as Chair Person (Ffion's mum)

Brendon Woods has resigned as Treasurer

Shellie Moses has been elected as Treasurer (Bridie's mum)

And we welcome Michelle Waylen as our appointed Secretary.

I would like to thank Brendon as he has been a wealth of knowledge, his financial mind has guided Preschool for the past few years and we greatly appreciate this. Brendon, we thank you for all of the time and effort you have put in.

Also, a big thank you to Emma for leading Preschool as the Chair Board person for a number of years. Emma was a big part of the building process of our current building. Emma will still be a part of the board and will continue to support us.

We welcome Michelle and her family (Millie and Mac) to the community. Michelle's children will be joining Preschool soon and we look forward to supporting them with their learning journey.

Unfortunately, we were unable to go ahead with the Working Bee this weekend due to the weather. We have made a new date which is this Saturday the 26th. We really appreciate any time and effort given to help our Preschool look better.

APOLOGIES for the delayed invoices. We have moved to a new invoicing system and it is proving difficult. Kim then went on holiday for two weeks (lucky her). When Kim arrived home, unfortunately, she has then been sick so we are now behind on invoices. Thank you for being flexible and understanding this.

FEE INCREASE – in the near future we will be increasing our fees. We will give you a month's notice before implementing.

There will be a little bucket and a packet of wipes in the cupboard under the sign-in sheet; this is for you to wipe your child's face and hands if they have had peanut butter for breakfast. This is following our Peanut Free Policy. Thank you for understanding and following the procedure.

NEEDED - If you have any of these items lying around at home, Preschool would love to have them for the children to explore with;

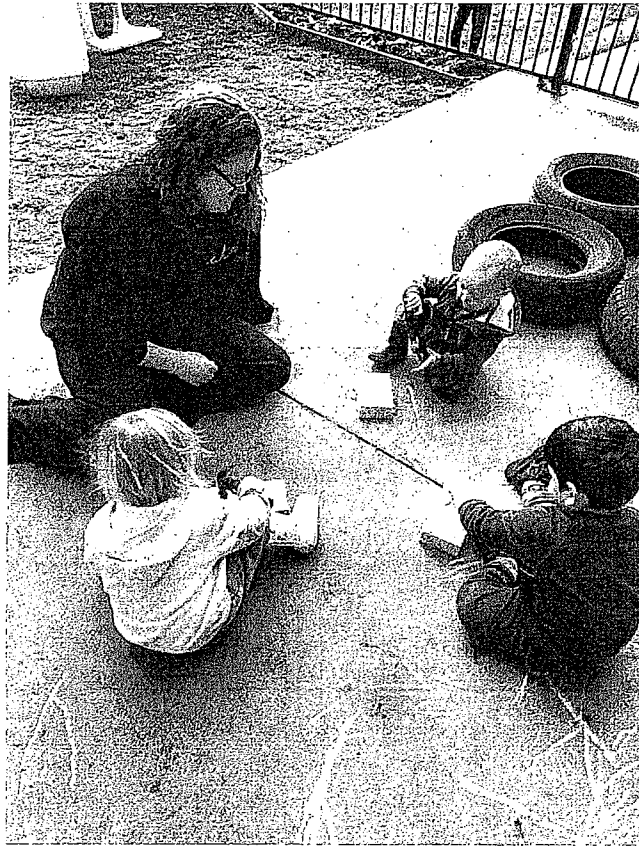
1. Push bikes/scooters
2. Busy Board items - locks, push button, wheels etc. All items need to be weather proof and can be attached to the wooden fence.
3. Medium-sized paintbrushes
4. Tree Stumps (30cm rounds for example)
5. Napkin Rings
6. 3 Metal Pots without handles or 3 Metal Bowls

We welcome parent feedback on our policies and procedures. If you would like to read and write any suggestions/ changes of wording on the policies, please ask one of our teachers to see the folder.

Although our website is still a work in progress it already looks amazing and is so much easier to read and use. Take a look <https://pukekopreschool.org.nz/>

From 1 April the Government has increased the threshold for childcare support payments. Please check the WINZ website to see if your family qualifies. (Many could do). Please come and talk to Kim or Jo if you have any questions.

A warm welcome to these children and their whaanau
Freya
Iris
Millie and Mac



Our toddlers learning how to use a hammer.
This encourages hand-eye coordination and determination to keep trying



We love having fun at mat time
– Our over 2's enjoying a game called Bug in a Rug.
They have to try and work out who is the 'bug in a rug'.



Shells has introduced Yoga into the Toddlers /
Babies daily routine and they absolutely love it

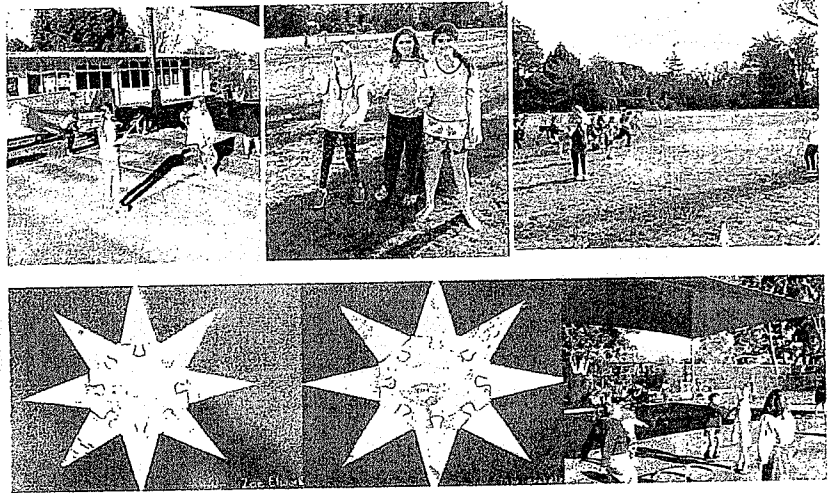


OUR CLASSROOMS:

Ruru Class

This term has started off as a very busy one in Ruru class. We have been learning all about procedural and speech writing for our literacy, probability and chance in mathematics and different models of health and wellbeing during our inquiry sessions. Students have also completed some stunning Matariki star art, within which they learned about the meaning behind each star. We have been fortunate to make the most of the sun shining and have had an opportunity to develop our knowledge and skills with our Kiwi Tennis sessions which will continue over the next few weeks. During our Friday team rotations, students have had the opportunity to learn all about the game of spike-ball, as well as developing their skipping skills. Over the first few weeks of term, there has also been a big focus on the FIFA Women's World Cup. Students in the Kaunihera have organised lunchtime soccer games and as a class we have been tracking the results and learning about the players in the New Zealand team. Ruru class has had a great start to Term 3 and are looking forward to lots of exciting events and learning happening in the weeks ahead.

Bex Lovell (Ruru Class Teacher)



Kiwi Class

Term 3 has been off to an exhilarating start for the Kiwi students! We have been keeping ourselves busy with a range of exciting activities that have been both enjoyable and enriching. One highlight of this term has been the introduction of Kiwi Tennis. We've been lucky to have expert coaches visit our school, teaching us the skills and techniques of tennis, igniting our passion for the sport. The Reading Dogs program has brought joy and improved our literacy skills. Our buddy class has joined us in this delightful initiative, where we read to an adorable therapy dog called Nushka, making reading even more fun and rewarding. On the artistic front, we've been hard at work creating our calendar art. Our creative talents have been unleashed, resulting in vibrant and captivating pieces that will surely impress all. Another exciting venture is preparing our speeches. With enthusiasm bubbling, we are eagerly looking forward to sharing our thoughts, ideas, and passions with the entire school community. It's been a fantastic and productive journey so far, and we're thrilled about the upcoming opportunities to learn, grow, and excel. Let's make this term unforgettable together!

Casey McConnell (Kiwi Class Teacher)



KEEPING OURSELVES SAFE:

Our School Community Constables Mike & Toby working with classes last week during Keeping Ourselves Safe.



School Disco

It was a great Newstead Neon/ Fluro Disco on Friday 4th August! Many thanks to all our whānau who helped at the event or supported us in some way, what a fabulous Newstead community evening. Thanks to all the school staff also for being there to support our PTA. The Disco Committee put in an enormous amount of time and energy to create a fun night for our kids. Ka mau te wehi! (fantastic!) The Eureka Hall was an excellent venue which we hope to use again in the future. There were certainly loads of smiling neon painted faces and tired bodies by the end of the evening! We raised \$1,300.00 on the night and we will put this towards some tools and equipment for the children to use for the new sustainable gardens.



Ladies a plate

Cheese and Relish Pinwheels

This is a good way to use up chutney or relish that may have been around for a while.

2 cups flour

6 tsp baking powder

½ tsp salt

25g butter

¾ cup milk

½ cup relish or chutney

1 cup grated cheese

Sift flour, baking powder and salt into a bowl. Cut in butter until crumb-like. Quickly mix in sufficient milk to make soft dough. Knead lightly. Roll or pat dough to a 20 x 30 cm rectangle. Spread with relish or chutney. Sprinkle with cheese. Roll dough up from the long side like a sponge roll. Use a piece of string to cut the dough into 3cm slices. Place the string under the roll; bring around the circumference, cross the ends and pull to cut the dough. This gives cleaner edge and a better shape. Arrange the slices in a 20cm shallow tin. Bake 220c for 15mins or until cooked. Serve warm



When should you replace a hard drive?

Short answer: now. Long answer: whenever you feel like it, but probably soon. Hard disk drives, or hard drives for short (or HDD's for even shorter), are at the end of their life-span. Just to clarify for those who haven't read my previous articles, a hard drive is not the box that sits on the floor or on your desk (ie. your computer), it's the storage device inside your computer. As cheap storage for large amounts of data they remain stalwarts, but in the future the more modern 'solid state' drives will overtake them there also.

What's the difference? Solid state drives are made up of computer chips much like your computer's CPU, whereas a hard drive is made up of multiple magnetic rotating platters, using a tiny arm to read and write data magnetically. Since it uses moving parts, hard drives are about ten times slower than solid state drives, and about 100 times slower than the more modern NVMe solid state drives. Since they have those moving parts, hard drives are more susceptible to damage via physical interaction, eg. dropping the laptop. But solid state drives are more susceptible to power damage, such as spikes from power line strikes.

So one reason to replace your hard drive with a solid state drive is speed. Particularly for modern operating systems like Windows 10 and 11, which are designed with SSD's in mind (and go about as fast like a cats turd sliding off a hot corrugated iron roof on a HDD). The second is the rapidly-approaching demise of your existing hard drive. While SSD's also have a lifespan of about 5-10 years, most computers built with a HDD are pretty old now, which means the HDD is typically close to the end of it's lifespan (6 years on average).

How can you tell if your HDD is about to fail? Bad sectors are the most foolproof measure, as even a single bad sector is a strong indicator for imminent demise according to Backblaze (a data warehouse who publish statistics on these sorts of things) – more info here: <https://www.backblaze.com/blog/what-smart-stats-indicate-hard-drive-failures>. You can check for these using HDDScan or a similar tool, if you have greater-than-novice computer skills. Backblaze also stated categorically that HDD's fail more quickly than SSD's, though not by much (see: <https://www.backblaze.com/blog/how-reliable-are-ssds>). Generally-speaking, as soon as you see 1 bad sector on a hard drive I tend to recommend replacement, or at the least conscientious backing up of your data.

Bottom line: all drives fail, including solid state drives. But if your computer is still running a hard drive (referred to in a previous article as a 'spinning rust drive'), chances are it's a good time to replace it and get a speed boost while doing so. BTW, as of next month, I'm adjusting for inflation and putting my prices up. Just so you know. All those fancy gold-plated sports cars I drive don't pay for themselves eh?



Bentley Home PC Support

You can view all past articles online at <https://homepcsupport.co.nz/articles.htm>

Matt Bentley
Bentley Home PC Support
452 Tauwhare Rd, Matangi, Hamilton
www.homepcsupport.co.nz
0211348576

MATANGI GARDEN CLUB

ANNUAL PLANT SALE

SATURDAY 14TH OCTOBER

9 AM – 12 MIDDAY

MATANGI HALL

MATANGI

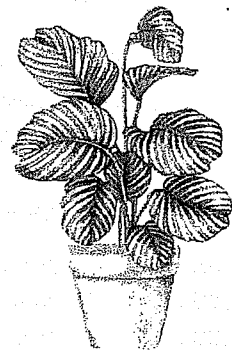
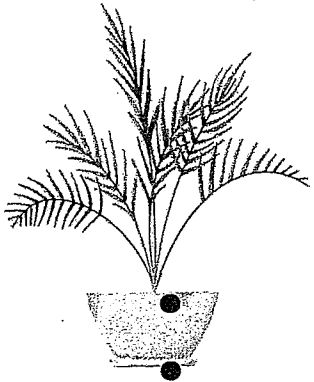
PLANTS

PRODUCE

RAFFLES

DELICIOUS MORNING TEAS

EFTPOS AVAILABLE



• **Weather for July 2023**

Weather for July 2023		
Rainfall total	72 mm	
Rain Total for year	1278 mm	
Rainy days	15	
Most daily rainfall	18 mm	7 th July
Highest wind speed	56.2km/hr	3 rd July
Temp high	15.9 °C	15 th & 16 th July
Temp low	-1.3 °C	29 th July

TAUWHARE INDOOR BOWLS NEWSLETTER

Welcome to the August newsletter from the Tauwhare Indoor Bowling Club.

It is hard to imagine that this might be the second to last newsletter for the season. Doesn't seem that long ago that I was writing the first newsletter for the season.

Although the season maybe nearly finished it is never too late to come and give bowls a go. Maybe give it a try and hopefully see you next season. We can always do with more members to make sure that the club continues to survive.

We endeavour to be finished between 9.30pm and 10pm. If you do decide to come along, then, ideally be at the hall by 7.20pm so the draw can be done ready for a 7.30pm start. If you want to come and try bowls but would prefer not to be put into a team, then that is fine. We have players within the club that would be happy to introduce you to the game. You do not need to bring anything along – just wear flat soled shoes.

Our aim going forward is to make bowls a fun social evening.

Club night results for the last 4 weeks:-

- | | |
|----------|---|
| 03.08.23 | Esme Pope Memorial – Handicap Singles
Winner - Trudy Pocock
Runner up – Darron Cutler |
| 10.08.23 | Erin Rosebowl challenge against Matangi – Matangi won. |
| 17.08.23 | Mulholland Trophy
Winner - Bev Meads and Heather Bargh
Runner up – Jim Arnold and Karen McNally |

Our programme to the end of the season-

- | | |
|----------|------------------------------------|
| 24.08.23 | Club Night |
| 31.08.23 | Final Points Night |
| 07.09.23 | Club Night |
| 14.09.23 | President and Vice President Night |
| 21.09.23 | Patron's Night |
| 28.09.23 | AGM and Prizegiving |
| 19.10.23 | Christmas Tournament |

If you would like more information, please do not hesitate to contact one of the following people: -

- | | |
|----------------------|--|
| Bev Meads | 021 172 7822 or email - bev.meads@gmail.com |
| Jim & Rosalie Arnold | 07 887 4832 |
| Ana Duncan | 027 475 7925 |
| John Cottle | 07 824 0992 or 027 524 0992 |

TAMAHERE-WOODLANDS COUNCILLORS'

UPDATE SEPTEMBER 2023

District News

Koroneihana

Your local Councillors Mike Keir and Crystal Beavis were among 6,000 people who gathered at Tuurangawaewae Marae in Ngaaruawaahia on Friday 18 August for the first day of Koroneihana, the annual event to celebrate the coronation of Kiingi Tuuheitia Pootatoau Te Wherowhero VII.

The commemoration opened with a traditional 'kawe mate' for Tainui hapuu to acknowledge those who have died in the past year and to place photos of them on the porch of the whareniui.

The annual four-day event also drew other iwi and visitors from all over New Zealand for sports activities, kapa haka performances, and a sharing of views. Sunday morning was dedicated to receiving politicians and the Prime Minister Chris Hipkins, Opposition Leader Chris Luxon and senior politicians from all parties arrived for the occasion. During the celebrations, Kiingi Tuheitia took the opportunity to choose former Paati Maaori President Che Wilson to serve as the Chair of the Tekaumaarua, the King's Advisory Council and he called for greater unity from political parties in his traditional speech wrapping up the celebrations.

New Citizens

The day prior, on Thursday 17 August, the Council welcomed 60 people from 19 different countries to the District in a citizenship ceremony in the Council chambers in Ngaaruawaahia. You may have read in the Council's recently adopted Annual Plan that Waikato District is now home to about 89,000 people. By comparison, 10 years ago the population was about 58,500. Positioned in the centre of the golden triangle between Auckland, Hamilton and Tauranga, Waikato District continues to attract growth, and the Council's vision is to continue to draw our growing population together into liveable, thriving and connected communities.

Regal Haulage

Congratulations to Regal Haulage which celebrated 35 years of trucking operations with a community Open Day at their Airport Rd Tamahere premises on Saturday 19 August. The company also 'unveiled' the 100th Volve to join its distinctive golden fleet.

Road Safety at Puketaha School

The Council's Road Safety Coordinator recently worked with Puketaha School to produce some new moveable roadside signs to discourage parking on yellow lines outside the school. The school says the signs have made a big difference and helped with discussions on child safety. If any other schools in the Ward would like a few of these signs, please email communications@waidc.govt.nz.

Illegal dumping

So far this year our Council has collected over 9 tons of illegally dumped rubbish! It includes household rubbish, furniture, car tyres and even animal carcasses dumped along our roadsides and in our creeks and drains. It's a cost on ratepayers as well as the environment. If you see rubbish where it shouldn't be please report it to the Council on 0800 492 452 or on our website's request a service page.

Eureka Hall Committee Chair re-elected

Congratulations to Gayle Orr who was re-elected chair of the Eureka Hall Committee at the Committee's AGM on Thursday 24 August.

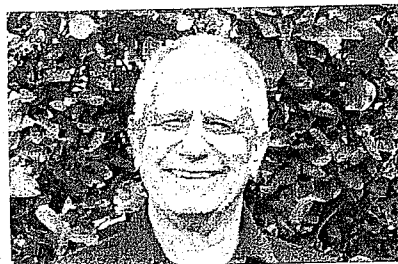
Community meetings coming up:

- Tauwhare Community Committee – Wednesday 30 August, 7.30pm at St Andrews
- Tamahere Community Committee – Tuesday 5 September, 7.30pm at Tamahere Community Centre
- Matangi Community Committee – Tuesday 12 September, 7pm at the Tamahere Council offices (a strategic planning session)
- Gordonton District Committee – Thursday 14 September, 7.30pm, Gordonton Hall.
- Newstead Residents' Association – Sunday 17 September, 3pm, in the Hamilton Car Club, Vaile Rd

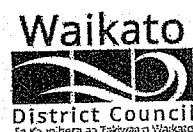
Also coming up this month:

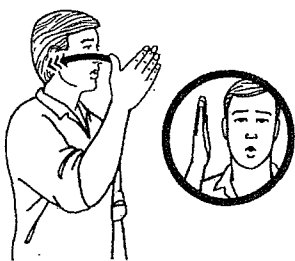
- Creative Communities Fund – Applications for round two of the Creative Communities Fund close on 31 August and will be heard by the Assessment Committee on 5 October 2023.
- Freedom Camping Bylaw - Hearings will be held at the Council on 12 September.
- Te Wiki o te Reo Maaori/Maaori Language Week – 11-18 September
- 2023 Waikato Sport and Active Recreation Awards – nominations are open until Friday 29 September. Check it out at www.wsara.co.nz.

Contact your Tamahere-Woodlands Councillors:



Crystal Beavis, mob 0275 957 927, email crystal.beavis@waidc.govt.nz
Mike Keir, mob 027 449 3012, email mike.keir@waidc.govt.nz





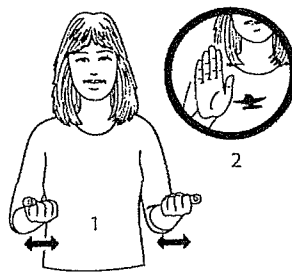
school

kura



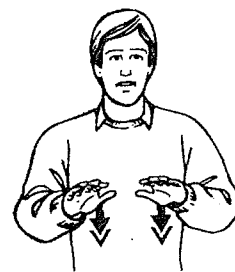
bus, truck

pahi, taraka



bus stop

tūnga pahi



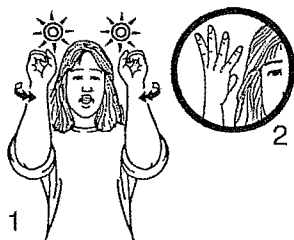
wait

tatari



stay

noho



flashing light

rama kāraparapa



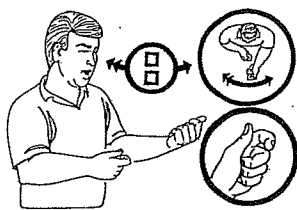
police

pirihimana, ture



doctor

rata, tākuta



firefighter

ringa tinei ahi



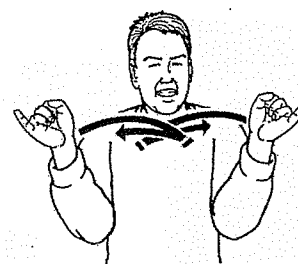
smoke alarm

pūoho auahi



fire, smoke

ahi, auahi



emergency

ohotata

NEW ZEALAND SIGN LANGUAGE

There are different daily themes, from the Declaration of the Rights of the Deaf Child/ren to Building Inclusive Deaf Communities for a week. **Note: "Deaf" and "deaf" or 'D/deaf'**

We use the lowercase deaf when referring to the audiological condition of not hearing and the uppercase Deaf when referring to a particular group of deaf people who share a language – New Zealand Sign Language – and a culture. For example, myself use 'deaf'.

On the 23rd of September, that day will focus on Sign Language, and all D/deaf people and children have the right to communicate in sign language because it is their first language before speech. Not concentrating on D/deaf people with sign language, everyone, such as families, Education sector staff, and the Health Sector, can learn to communicate in sign language.

We - D/deaf people, want to be inclusive, to achieve our sign language rights in the Education and Health Sector, social media/News media such as emergency/disaster breaking news on TV. With sign language in the social media, Education and Health sectors, we can communicate effectively and stay in the community.

Technology has made a big difference for us to communicate efficiently, such as mobile, video chats, and Zoom meetings anywhere.

In February, I received several texts, emails and video chats about Coromandel and Hawkes Bay flooding from the D/deaf people asking where to find help service support services, trapped in their area and feeling isolated. I contacted many networks, including farming sectors, for their assistance to the D/deaf people and People with disabilities. It is about ensuring they are inclusive and safe within the communities through emergency crises.

NEW LOCAL BUSINESS



PASTURE RAISED EGGS

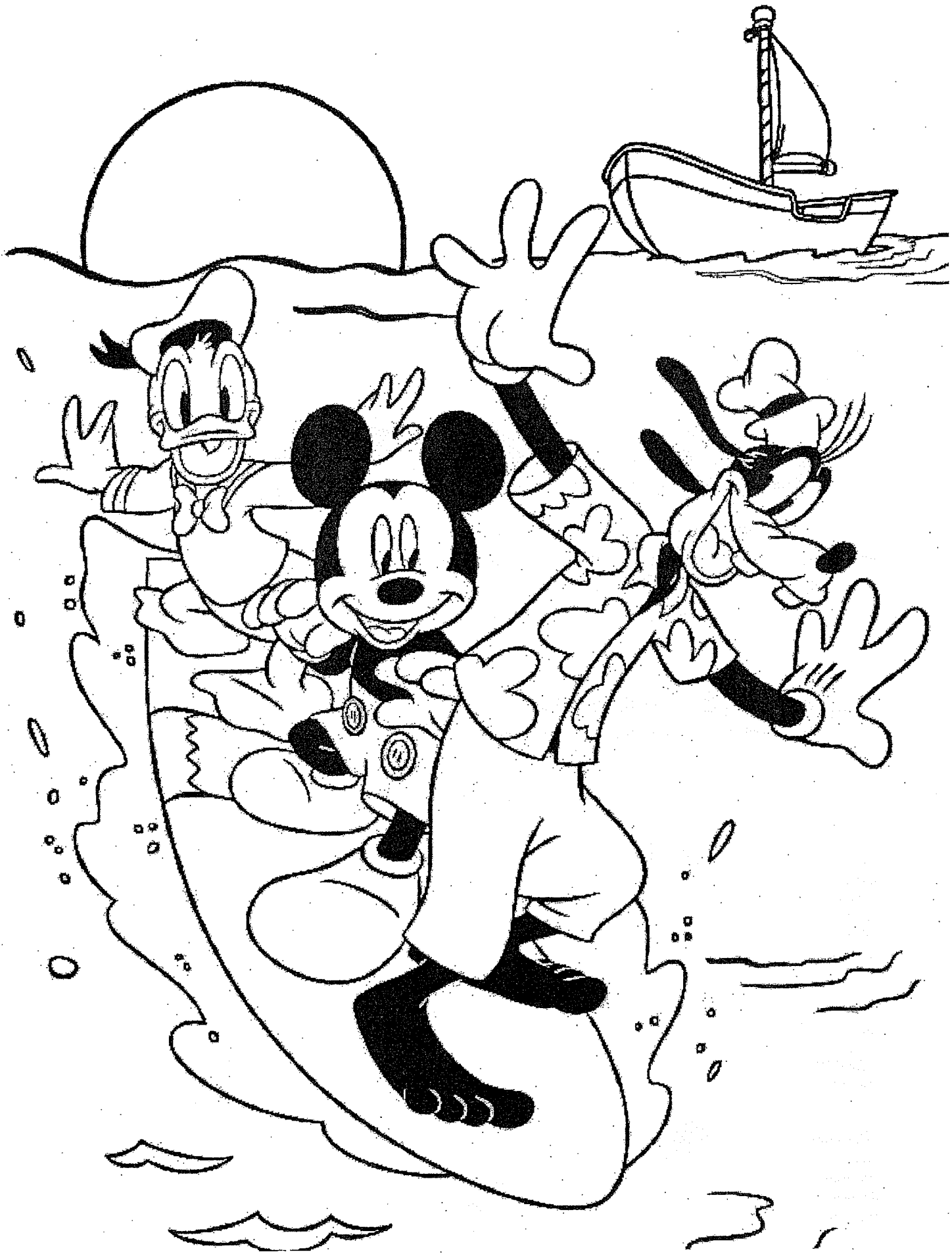
Keep it local with pasture raised fresh eggs delivered from our little place in Eureka to your door every week

\$12

Sonay: 021 141 6640
Mukuleta Farm

We have a small family farm located on Holland Road where we have chosen to raise friendly free range chooks! Our chickens enjoy a happy free-range existence within our paddocks. They spend their days roaming around and voluntarily putting themselves to bed at night, truly living the life! We offer a convenient delivery service for eggs. For just \$12 per dozen, we can have them delivered right to your letterbox on a weekly basis. This way, you no longer have to worry about whether or not there will be eggs available at your local grocer. Alternatively, if you only need a dozen eggs now and then, you can pick them up at the Eureka Petrol Station. We appreciate your support in backing our beloved chooks!

Phone Sonay 0211418640

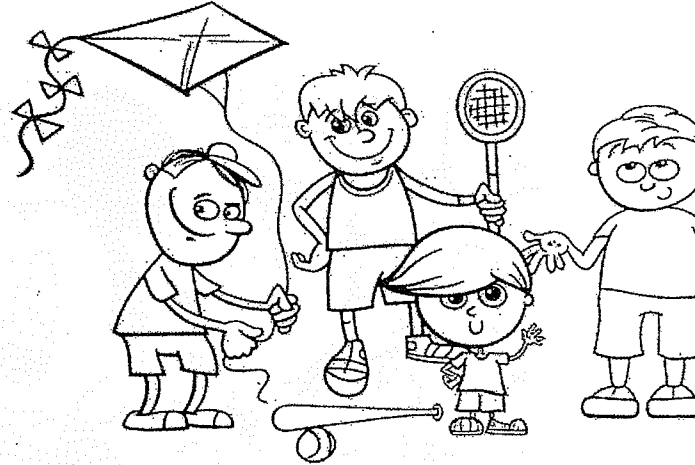
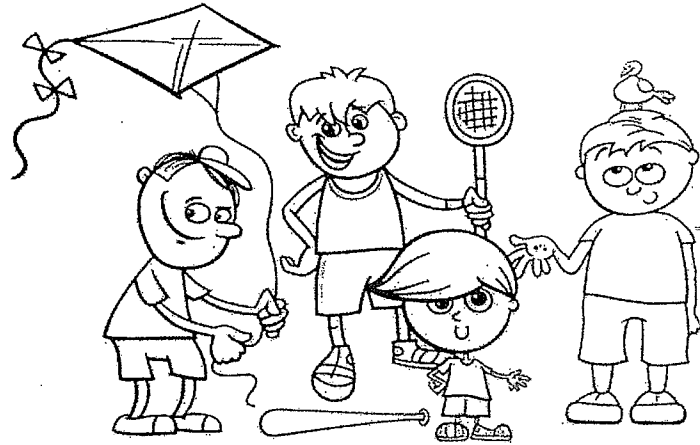


Sports Word Search

G H T F K L H L L A B L B Y J M W
 C Y P Q Q K U G B Q F L O Y J Q J
 O V X B I C D V L F L Z D N Q J U
 U V G I P A T H L E T E Y N N Q N
 L O T E M L E H C E U A K K Q L Q
 U L Q W D G D Q Q J K N C C Z A G
 S L S F S U C J I K V G U I J M R
 O E O I L C I U Z Y F H P K V I A
 G Y C E G R U N N I N G B F B W S
 E B C L K K N G L A C R O S S E S
 A A E D C E L L A B T O O F S S Q
 R L R W F K Y E K C O H Y N V T N
 K L B U I S E O H S K K D K F A I
 R N U J S D R A U G E Y G J I E D
 P P S N C U L M C F D U U D B L A
 Y T A B I P J W T R U O C C U C D
 W J N A M E Z L L A B T E K S A B

- | | | | | |
|----------|------------|------------|---------|---------|
| soccer | volleyball | shoes | running | puck |
| lacrosse | kick | hockey | helmet | guards |
| grass | gear | football | field | court |
| cleats | bat | basketball | ball | athlete |

Spot the 5 differences



baseball bat, small boys hand up,
 kite ribbon, tall boys smile, bird on head,



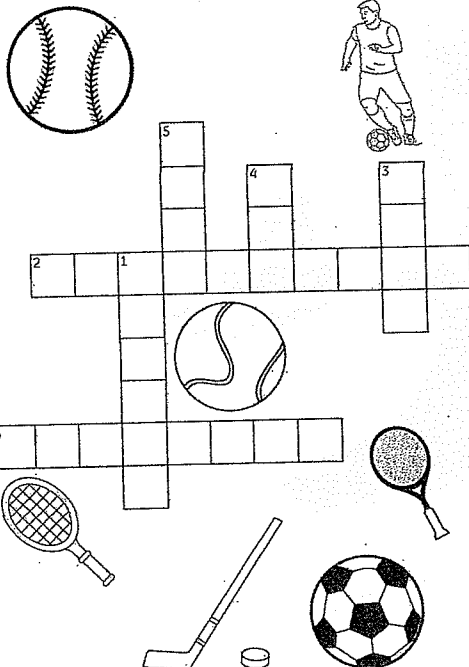
SPORTS CROSSWORD

SOLVE THE CLUES AND FILL OUT THE GRID



DOWN

- PLAYED ON A GRASSY FIELD WITHOUT USING HANDS
- TRYING TO HIT A SMALL WHITE BALL INTO HOLES IN THE GROUND
- USED TO HIT A BASEBALL
- SLIDES ON THE ICE



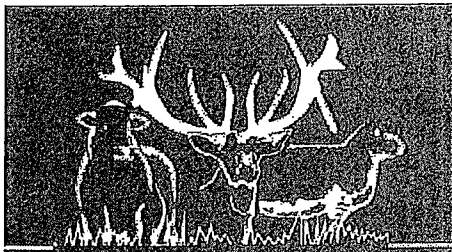
ACROSS

- SPORT OF THE NBA
- BAT AND BALL GAME

Down - soccer, golf, bat, puck
 Across - basketball, baseball

Who will score a goal in the goal?





TAUWHARE HOME KILLS

TREVOR & LEONIE BRUNTON

1126 TAUWHARE ROAD

PH: 07 324 0830

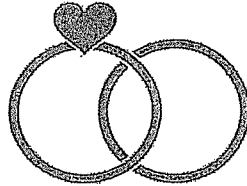
FX: 07 224 0809

Sam Ware
MARRIAGE CELEBRANT

021 897 706

sam@samwarecelebrant.co.nz

www.samwarecelebrant.co.nz



EUREKA
POULTRY FARM
13 Hooper Road
Ph 824 1762
NIC & MARIA STOLWYK
Hobby Hens

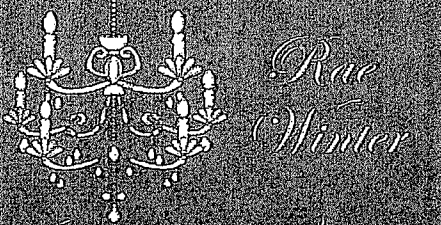


Young pullets from
5 weeks to point-of-lay
Great for lifestylers
Bagged up chook manure
Hours Mon-Sat 8-6

If you need this
AED
You Need an
Ambulance!!!

Call 111

Ask for Ambulance
Give the location of
this box as shown
below. Ambulance
control will give you
the code, Remove the
cover, Enter Code,
Turn Handle



Interiors on Hoeka

GIFTS - INTERIORS - KIDS

196 HOEKA ROAD, RD4
MATANGI, HAMILTON

FOR AN APPOINTMENT
CONTACT ME

029 386 6983

interiorsonhoeka@gmail.com



safe water fast

Premium water tank cleaning and purification
without the premium price tag

Resolve smells, bad tastes and contamination
No purchasing replacement water
No damage to inside of tanks
100% satisfaction guaranteed

Ministry of Health recommend annual servicing of your collection tanks

When were yours last cleaned?

Graig Nicholson 027 660 5329 0800 SAFE H2O

cjn@safeh2o.co.nz www.safeh2o.co.nz

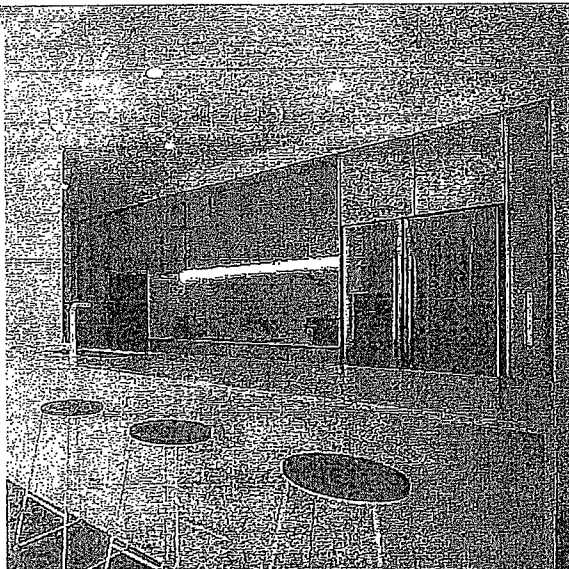
The Kitchen
Lady

For your design,
manufacture and
installation needs.
We come to you.

RENEE MOUAT

021 177 8695

www.thekitchenlady.nz



KITCHENS | VANITIES | LAUNDRIES | WARDROBES

EUREKA HALL FOR HIRE

Weddings, parties,
meetings, a great venue

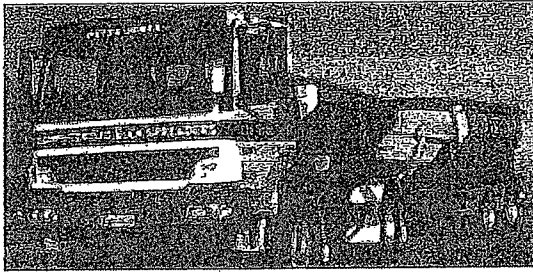
To book

Email

eurekahallwaikato@gmail.com

COMPUTERISED BULK SPREADERS LTD

Cartage & Spreading



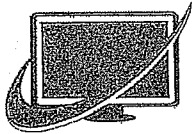
FERTILISER, LIME, UREA
SPECIALISTS

Competitive rates

PETER JONES

027 496 3370

36 years service in the Morrinsville district



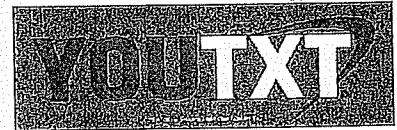
CTAS

100% NZ Owned and Operated

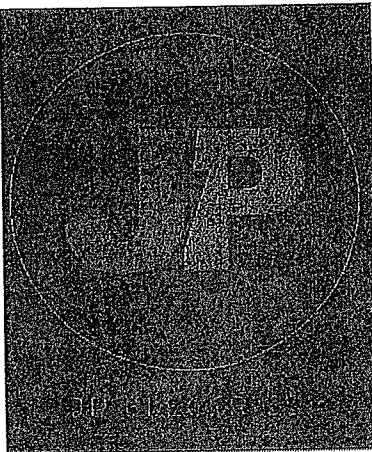
- TXT and Email Alerts and Reminders
- TXT Shortcodes for your business or club
- Flight Status by TXTing your Flight to 8808
- Live Video and Audio Streaming on the Internet



Create and Share information by TXT



www.ctas.nz | sales@ctas.nz | www.youtxt.nz



JAMES PALMER

REGISTERED ELECTRICIAN

james@jpelectrics.nz

027 756 6804

Residential – Commercial – Heat Pumps

nzgarden sheds

the best little sheds around!

Your local garden shed supplier of NZ made, self assemble Garden Sheds (Zincalume or Colour Steel)

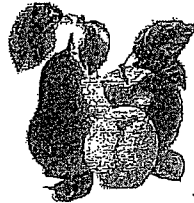
GET IN TOUCH...

- * EASY ASSEMBLY
- * MADE TO LAST!

Waikato Shed Company
218 Hunter Road, Eureka,
Hamilton
Phone: 07 824 1045
Email: sales@nzgardensheds.co.nz

ENQUIRE FOR A BROCHURE NOW

FRESH APPLES & PEARS STONEFRUIT IN SEASON

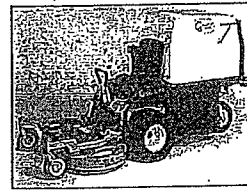


NEWSTEAD ORCHARD
552 Morrinsville Road

OPEN MON-SAT.
W J McMiken & Co
Morrinsville Road
Tel. 856 4478

LAWNMOWING & GARDENING SERVICES

Professional lawn & garden-care service



Alex & Sharyn MacDonald

For free no-obligation quote:

Phone: 027 479 7282
or 027 308 6781

Email: macdonaldmowing@gmail.com
www.lawnandgardenservices.co.nz

Residential - Rural - Commercial Mowing
Spraying - Fertilizing - Weedeating



Servicing and installation on all types of pumps

Full water treatment service available

DAREN ROSS
Ph: 8241 726
or
0274 346 571

Email: admin@rosspumps.co.nz

meat the need

NZ FARMERS, FEEDING NZ FAMILIES

DO YOU WANT TO HELP
FEED NZ FAMILIES?

A donation of just one cow will
provide over 650 meals in the
community.
Together as nz farmers we
can feed nz families.

Visit us at meattheneed.org
or call us on
0800 632884

HAIRFIELDS

HAIR DESIGN
95 HOOPER ROAD

Sharon Laurent

Full salon facility in Eureka
Total hair care professional
with many years experience
Agent for Nutrimetics also

Covid19 vaccine pass required

Open Tuesday to Thursday
Late nights Tues/Thurs
Tel. 824 1712 or 027 280 5978



161 Morrinsville Road, Hamilton, 3286
Phone: 07 856 4522 Fax: 07 856 9487 Email:
enquiries@newsteadvets.co.nz
Website: www.newsteadvets.co.nz

Newstead Vets offer a full range of veterinary services for small

animals including:

- Consultations (by appointment only)
- Soft Tissue and Orthopaedic Surgery
- Digital Radiography and Ultrasonography
- NZVA Microchipping Accredited Practice
- Nutrition and Product Advice
- Rural location with ample parking
- Referral to Specialists
- PennHIP Certified
- Full Laboratory Service
- Hospitalisation
- Cremation Service
- Convenient Online Shop

Earthworks, Excavation, Farmworks and Concrete Laying

-Your Waikato wide specialist -

No job too small, too big, too tough - Let us do the hard work for you!



- ✓ Diggers, Bobcats, Trucks available
- ✓ Feed, Arena Pads & Shed cleanouts
- ✓ Farm Race installation
- ✓ Drainage, Landscaping & Lawns
- ✓ Site preparation and Clearing
- ✓ Topsoil, Race Rock, Metal and Sand

- ✓ Concrete House and Garage pads
- ✓ Concrete Driveway installation
- ✓ Patios, Outdoor living, Foot paths
- ✓ Swimming Pool excavation
- ✓ Licensed Building Practitioner
- ✓ Certified - Foundations



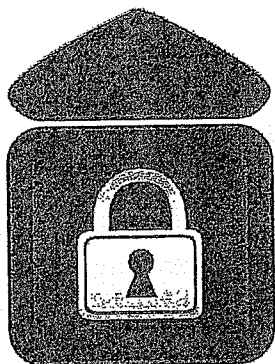
Dig It Earthworks & Concrete LTD

FREE QUOTE! Phone Liam 02102839174

www.digitearthworks.co.nz

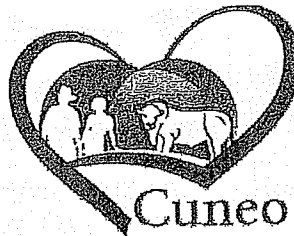
liam@digitearthworks.co.nz

www.facebook.com/Dig-It-Earthworks-Concrete



Eureka Storage

Many options from 9m2 - 307m2
Short term + long term
Call me to discuss your requirements



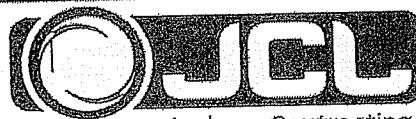
Cuneo Piedmontese

HEART • HEALTHY • BEEF

Pedigree + Commercial
Purebreeds For Sale
Bulls, cows + yearlings

Don Knight 0274950535

117 Hooper Road, Eureka

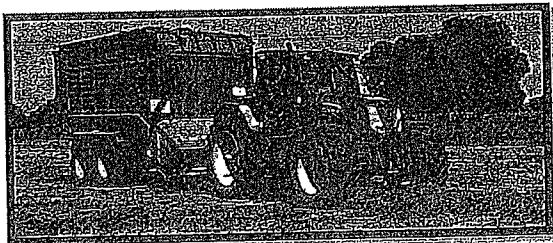


Jackson Contracting

Growing Together

Maize, Grass
Silage & Hay
for Sale!

Providing Professional Agricultural Contracting Services

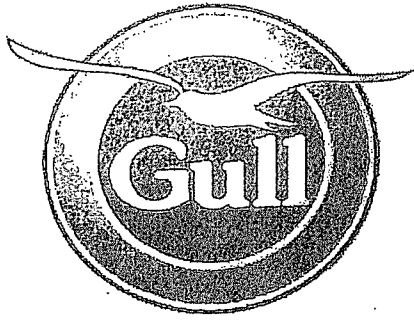


Services Include:

- Baling, Round, Big Square & Conventional
- Spraying
- Grass Silage - Chopper & Loader wagons
- Maize Silage - Cultivations, Planting & Harvesting
- Bulk & Hiab Cartage

Call Jeremy Rothery for inquiries or bookings 027 526 2441

www.jclag.co.nz



GULL EUREKA

PETROL – DIESEL – LPG - OILS & LUBRICANTS

FARM SUPPLIES – GROCERY ITEMS

SHOP HOURS: MONDAY TO FRIDAY 7:30AM – 6:00PM

SATURDAY 8.00AM – 12.00PM

**AND NOW: FUEL 24 X 7 PETROL & DIESEL FROM OPT (OUTDOOR
PAYMENT TERMINAL)**

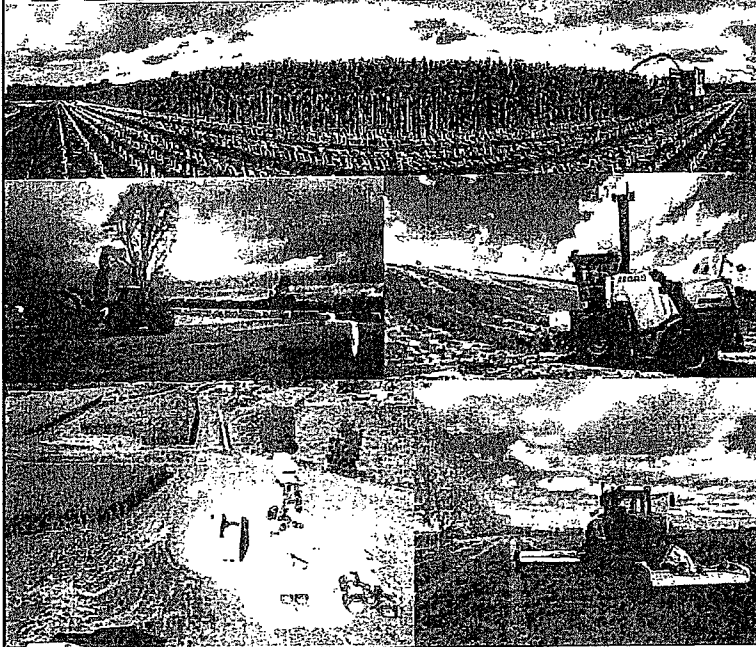
EFTPOS – RD1 FARM SOURCE – FARMLANDS – CARDLINK

AMEX – MASTERCARD – VISA



us on Facebook for discount day and promotional information

Walling **CONTRACTING LTD**



For all your:

- Ground Cultivation
- Planting
- Re-Grassing
- Under Sowing
- Grass Silage
- Maize Silage
- Digger &
- Spray Requirements

Ph: 07 824 0894

Zach Walling: 027 450 0125

Email:

walling.contracting.ltd@gmail.com



Local Company based at Eureka

Our sheds are all made from NZ Steel and certified NZ made so by purchasing from us you are supporting more than one New Zealand Business

Lifestyle
Rural
Industrial
Habitable
Sleepout

Waikato Shed Company

218 Hunter Road

Eureka

07 824 1045

Enquiries@waikatosheds.co.nz

www.waikatosheds.co.nz

WAIKATO SHED C O M P A N Y ✓✓

great sheds, done right!

Pats Shed — Antique Shop & Granny Flat

Jason & Sean visited Pats Shed which is an awesome antique shop at 97 Kay Rod, Hamilton.

To see more follow them on  facebook.com/Patsshednz

The original shed was built 10yrs ago by Ryan Billings (Construct One). Two nice Garador doors 3.2h x 4.2w to the front look great in the Ironsand Coloursteel cladding and the clearlights running down the roof let in lots of light. 3yrs later we built an addition to the shed, a habitable minor dwelling for the owners parents to live in. The double glazed windows (City Glass) on the high side allow lots of sun in and keep the place lovely and warm.

LEB (Loveridge Enterprise Builders Ltd) did a great job with all the cool features on the inside.

[Search Waikato Shed Company on YouTube for our shed videos](#)





Local Company based at Eureka

Our sheds are all made from NZ Steel and certified NZ made so by purchasing from us you are supporting more than one New Zealand Business

Lifestyle

Rural

Industrial

Habitable

Sleepout

No Bull Sheds

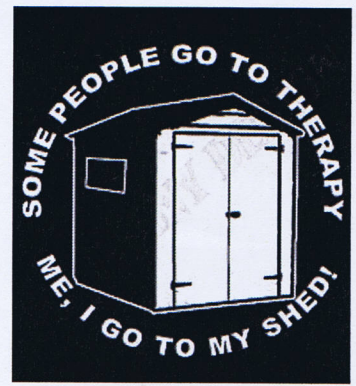
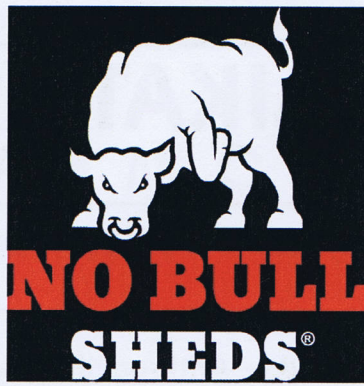
218 Hunter Road

Eureka

07 824 1045

Enquiries@nobullsheds.co.nz

www.nobullsheds.co.nz



BA5 Chamber of Commerce Evening

This month we hosted the Morrinsville Chamber of Commerce, Business after Five event. Thanks to Cathy Balvert who helped make it a successful evening.

A great evening was had by all who attended, check out our video on



Watch this space

Search Waikato Shed Company on YouTube for our shed videos