

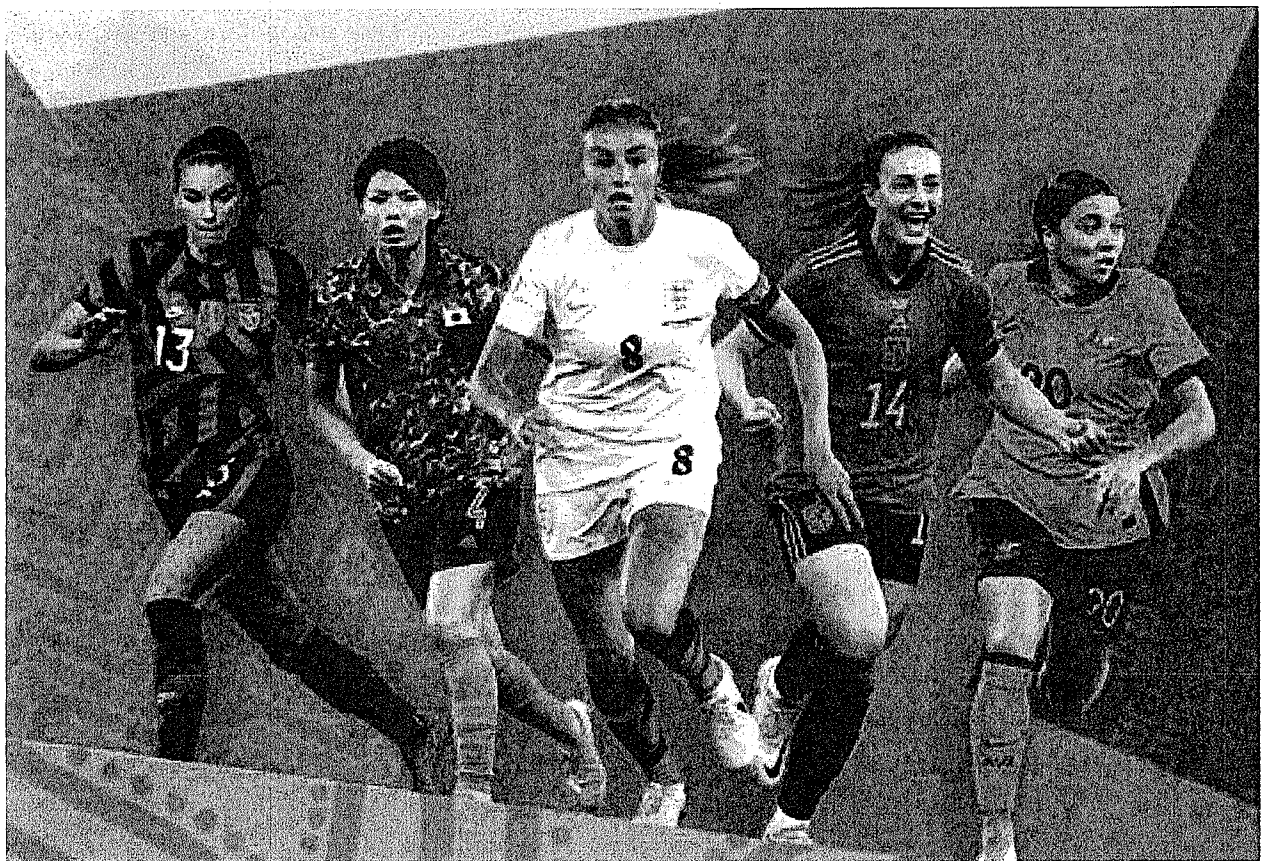
# Eureka Express

Vol XLIV No. 6 Circ 315

[www.eurekaexpress.co.nz](http://www.eurekaexpress.co.nz)

July 2023

[editor@eurekaexpress.co.nz](mailto:editor@eurekaexpress.co.nz)



20<sup>th</sup> July – 20<sup>th</sup> August

## **HALL COMMITTEE AGM**

**THURSDAY 24<sup>TH</sup> AUGUST 7.00 PM AT THE HALL.**

**These AGM meetings are not long winded, so you won't be in for a late night. Come along and meet the committee, it is a great way to meet people in the community.**

**We work closely with the Council so if you have suggestions for the hall to make it more family friendly perhaps, come along and share your ideas.**

**Following the meeting there will be a short presentation discussion on the Council Emergency Response Plan for this community.**

**Hope to see you there.**

# EDITORIAL

## The Home Garden

Hi, we are home gardeners in our spare time. I'm sure I'm not the only one who's noticed how much warmer (and wetter) the year has been. We are mid July and hardly a frost in site. This has made our normal seed sowing times and seedling planting times a little off. But non the less we aren't letting it bother us. We are trailing planting seeds that don't normally get planted in July simply because this season they just might. The weather could really surprise us.

Last season was hard to grow in, we had battles with bugs, we lost a number of fruit trees to desensitised we couldn't identify. But managed to save about four from that same disease and they are still wanting to live. One has produced fruit after its ordeal, but we will just remove them and dispose of them else were. Normally we compost, but because we don't know what the trees had, we won't this time.

Veggie wise we didn't loose to much. Our worm tea, neem granules and neem oil seem to of help keep the aphids and other critters out. We have plenty of spiders that seem to live in our garden with dead caterpillars in their webs. Diatomaceous earth power is used carefully in the evening to stop snails. We are careful of what we use and how as we have bees. This season we lost a hive though. Food is not as abundant for the bees as it use to so we are making a point of adding bee friendly flowers to our veggie gardens to feed them, and also to other spots around the house. It reduces the weeding and mowing. Some flowers like sweet alyssum also bring beneficial insects to the garden which reduces the destructive insects.

We practice crop rotation and replenish our soil where we can, using home-composting, worm tea, epsom salts and neem granules. I'm aware there is still more that may need to be done for our depleted soils in Nz. As I am a working mum of two young girls and my husband works full time truck driver hours we do what we can.

I love getting the kids involved and showing them how to grow delicious tasting food. They also love preparing the food they picked. Our health journey doesn't just involve our garden though. We also advocate for holistic health and supplements, sustainable living and work life balance. With the prices rising everywhere I feel it's more important to be as self sustaining as you can manage. Sometimes the layout can be slow due to budgets or costly at first. But over time with will get easier and more worth it.

Ashlie Rounthwaite

# SNIPPETS – WHAT'S HAPPENING IN THE COMMUNITY

## DID YOU KNOW?

Not everyone in the community use Facebook or social media, and not everyone reads the express paper edition. So, if you have something to say we welcome your input in the Express. You may have something to sell, a fund-raising event coming up, know someone who has done something amazing and you want the community to know. Well, let the Express committee know and we will publish it. We love to know who is in the community and what an amazing place it is to live. I see so much on FB but not so much in the Express. Do you have a small business you would like to promote, one that you work from home. Tell us about it, let the community know so we can perhaps purchase your product or support you in whatever way we can. I know there are so many talented people out there, don't be shy, come forward and introduce yourself. We can't wait to hear from you.

## WELCOME TO

A warm welcome to Chris and Kate Lloyd, their 18-month-old son Thomas, and a new one on the way in Oct. Chris and Kate are on Hinton Road, with Chris working on the King Farm.

## DONATIONS ACCEPTED

We are all aware that the cost of everything is going up all of the time. The printing of the Express is also costing more. If you would like to make a small donation, we would be very grateful. We will send you a receipt for your donation so please put your name as a reference. Our bank account number is 03-1559-0042660-00. The name of the account is Eureka Express. We would also like to thank everyone who puts their loose change in the box at the Gull Station, all donations are gratefully received and definitely help towards the rising costs.

## CIVIL DEFENCE REMINDER

The Waikato District Council are working on a Community Response Plan. I have received the templates to complete but we need to get a few people together to complete the plan for Eureka community. We always think this will never happen to us, but unfortunately, we are not exempt from storms, flooding or even earthquake. We just don't know when a Civil Defence Emergency will happen to Eureka. A group of people are needed to work through this plan to put it together, gather names of contacts, and much more. It will be a one-off bigger project to start with, but then just a revisit will be required maybe twice a year.

If you are willing to help, put this plan together, please contact Gayle Orr 0272917150. Your help with this project will be a worth while investment of time for the community.

## BOOK FAIR

The next book fair at the hall will be Thursday 31 August. Plenty of choice for a good read. Books \$3.00.

## GULL EUREKA CHANGE IN OPENING HOURS

Colin Duncan wishes to inform the community that the Gull Eureka garage will no longer be opening on a Saturday. Petrol is still available using the afterhours pay system.

## CONDOLANCES

Our deepest sympathy goes to Rajesh and Ashima Prasad of 63 Hooper Road, for the tragic passing of their son, Sahil

Prasad aged 24 years, on 21 July 2023. Sahil was tragically killed in a vehicle accident. Our love and thoughts are with you and your family.



## EUREKA EXPRESS – ADVERTISING RATES 2023

Classified adverts	Free
Small business advert x 10 insertions	\$10 per month
	\$80 per year
Third of a page x 10 insertions	\$15 per month
	\$120 per year
Half of a page x 10 insertions	\$20 per month
	\$160 per year

For all articles, advertisements, photos, ideas and suggestions, please use the express email address. The Express is printed Feb – Nov each year.

All articles should be sent to the Editor by the 20<sup>th</sup> of each month. [editor@eurekaexpress.co.nz](mailto:editor@eurekaexpress.co.nz)

Yes we have a website and now you may also read and access our local history book, “**Eureka 1874 – 1984**” on the website. [www.eurekaexpress.co.nz](http://www.eurekaexpress.co.nz)

### LOCAL HISTORY

Copies of the 2004 “*School and District Jubilee*” booklet are readily available and are free. The booklet contains a synopsis of Eureka’s history and development.

Contact [editor@eurekaexpress.co.nz](mailto:editor@eurekaexpress.co.nz)

### GO BUS TIMETABLE

#### Leaves Morrinsville

Mon-Fri at 7:30am, 7:50am, 10:30am, 12 noon, 3:40pm, 4:00pm & 4:30pm

Allow 10 mins to reach Eureka. Buses are scheduled to arrive in Hamilton approx 20 mins later.

#### Leaves Hamilton

Mon-Fri at 6:45am, 9:00am, 1:00pm, 2:00pm, 3:30pm, 5:15pm & 5:40pm

#### Saturdays, Sundays and Public Holidays

- Dep. Hamilton 8:30am, 1:30pm, 5:30pm
- Dep. Morrinsville 9:10am, 2:15pm, 6:10pm

Fares with BusIT Card (available from driver or Transport Centre)

### REPORTING POSSIBLE CRIMINAL ACTIVITY

The suburban Police Stations are now closed to the public so criminal activity should be reported by visiting the Hamilton Police Station in Bridge Street or phoning 07 858 6200.

See <http://www.ns.org.nz/index/html/Factsheets/whentocall111> for more details.

### 105 (TEN-FIVE) INFORMATION

Use Ten Five (105) to report things that don't need urgent Police assistance.

If you need to talk to the Police call 105 from any mobile or landline. It's a free nationwide service available 24/7. If you can't get through to 105 please contact us online at [www.police.govt.nz/use-105](http://www.police.govt.nz/use-105).

### AED (Automated External Defibrillator) is situated at the Eureka Hall.

In case of an emergency phone 111 for an ambulance and ask for the code to open the AED box. The instructions for use are inside.

# HALL UPDATE

Hello to you all.

I have mentioned before about how things are happening behind the scenes by so many people to maintain the hall. The community's most valuable asset. This month new lino was laid in the kitchen, hall, and the toilets. It certainly is a vast improvement on the well-used lino that was down. It was a huge task to get it all co-ordinated and I would like to say huge thank you to everyone who made it happen. James Palmer the electrician, Josh Thomas, the plumber, Paul Bartle removing and replacing doors and several other jobs, Lionel Orr, Paul Bartle and Shaun Bartlett for moving the extremely heavy filing cabinets from end of the hall to the other. I can't forget Karyn our cleaner for doing an amazing job at cleaning the hall after the job was completed. There was a lot of dust. Also, a huge thank you to Colin White and his son in law David Taylor for cleaning out the guttering over the front door. A great team effort from everyone.

The heritage sign is up by the bus shelter. It has been a huge job by the Heritage committee getting this sorted. I hope you have stopped and read it, it is very interesting and another great asset for the community. Sue Edmonds has played a huge part in getting the sign completed. Thank you Sue on behalf of the community.

The Hall committee AGM is on Thursday 24<sup>th</sup> August at 7.00pm at the hall. You are all invited. **PLEASE** do not be afraid that you will be seconded on the committee, but we would love for you to come and meet the committee members who do an amazing job. Who knows, you might have something you can offer, a trade, suggestions, or just want to meet us. Hope you can join us. Following from the meeting we will have a short presentation and discussion on the Councils Emergency Response Plan. This plan is to designed by us as a community, so if you are interested in forming a small group to work on this plan, please contact me. This plan will be of benefit for all of us. We can't think that this will never happen to us. We just need to think about the last year and a half. We have had 2 cyclones and flooding. We certainly need a plan. Take care everyone and remember to look out for each other, it is getting really cold.

Usage	Residents	Non - Residents
Hall per day	\$ 50	\$100
Social function	\$150 - \$300	\$250 - \$500
Children's party	\$ 30	\$ 75
Bond	\$400 Secretary's discretion	\$500 Secretary's discretion

If you want to make a booking, please contact Gayle 0272917150 [eurekahallwaikato@gmail.com](mailto:eurekahallwaikato@gmail.com)

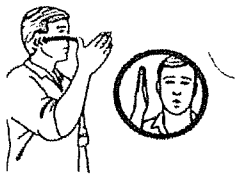
## **HALL COMMITTEE AGM THURSDAY 24<sup>TH</sup> AUGUST 7.00 PM AT THE HALL.**

**These AGM meetings are not long winded, so you won't be in for a late night. Come along and meet the committee, it is a great way to meet people in the community.**

**We work closely with the Council so if you have suggestions for the hall to make it more family friendly perhaps, come along and share your ideas. Following the meeting there will be a short presentation discussion on the Council Emergency Response Plan for this community.  
Hope to see you there.**

Weather for June 2023		
Rainfall total	281 mm	
Rain Total for year	1206 mm	
Rainy days	15	
Most daily rainfall	170 mm	22 <sup>nd</sup> June
Highest wind speed	38.5km/hr	24 <sup>th</sup> June
Temp high	17.6 °C	2 <sup>nd</sup> June
Temp low	-1.1 °C	14 <sup>th</sup> June

## SIGN LANGUAGE



school

*kura*



school

*kura*



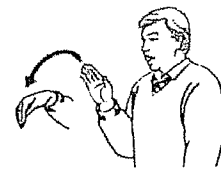
holiday

*hararei*



home

*kāinga*



go home,  
home

*hoki ki te  
kāinga, kāinga*



house,  
station

*whare, teihana*



eat, food

*kai*



drink

*inu, unu*



cup, tea

*kapu, tī*



coffee

*kawhe*



cafe

*wharekai*



buy

*hoko*



shop

*toa*



shop

*toa*

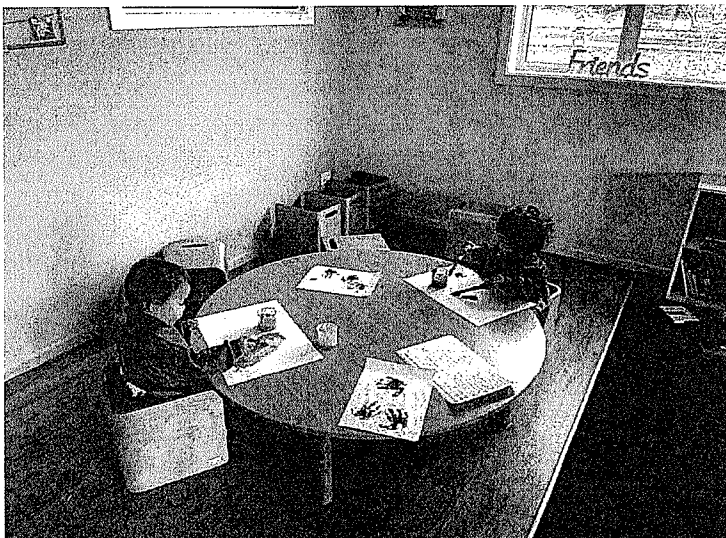


cold,  
winter

*makariri,  
hātaka*

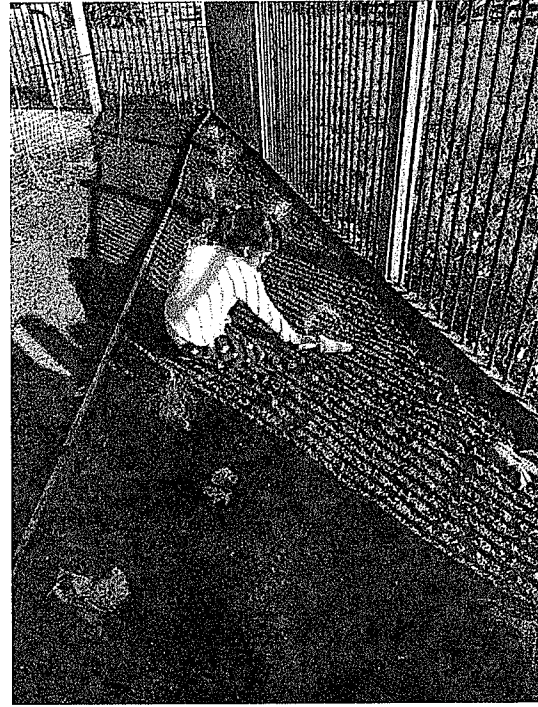


- Thank you to the Price family for donating some games and toys to Preschool. The children have loved having new things to explore and play with.
- A massive welcome to Shells. Shells has been employed to be our lead babies teacher. Due to Shells being in the babies, this then means that Kat will be back in the Over 2's. The children are very excited to have Kat back. I do want to thank Kat for filling in as she has done an amazing job with our babies.
- We have Vajna volunteering for 4 weeks (Tuesday's and Thursday's) in the babies room. Vajna will have her beautiful daughter - Losa - with her as well.
- **NEEDED** - If you have any of these items lying around at home, Preschool would love to have them for the children to explore with;
  1. Medium-sized paintbrushes
  2. Tree Stumps (30cm rounds for example)
  3. Napkin Rings
  4. 3 Metal Pots without handles or 3 Metal Bowls
- Although our website is still a work in progress it already looks amazing and is so much easier to read and use. Take a look <https://pukekopreschool.org.nz/>
- From 1 April the Government has increased the threshold for childcare support payments. Please check the WINZ website to see if your family qualifies. (Many could do). Please come and talk to Kim or Jo if you have any questions.

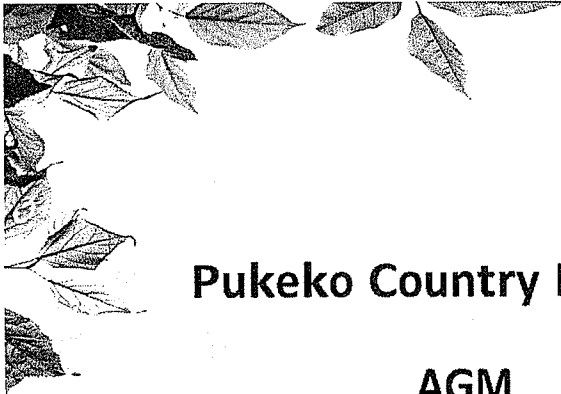


Big or small, all of our children love to paint and craft! Being creative encourages children to use their fine motor skills in many ways such as pinching and placing a sticker with accuracy, holding a pencil correctly, holding scissors and learning to use the correct technique to cut the paper and many more. They are often very engaged and share their creative knowledge with one another.





You may have noticed that we have made another small change at Pukeko's. The hill in the middle of the lawn has now been removed and the dirt has been put into a new little garden in the babies area. This has given the babies' outdoor area a pop of colour.



## Pukeko Country Preschool

### AGM

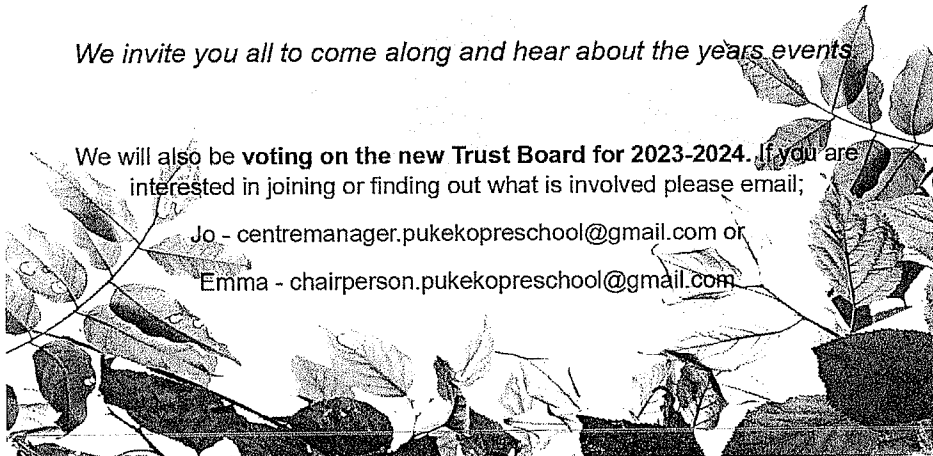
On the **8th of August at 7:00pm** we will be holding our Annual General Meeting at Preschool.

*We invite you all to come along and hear about the years events*

We will also be **voting on the new Trust Board for 2023-2024**. If you are interested in joining or finding out what is involved please email;

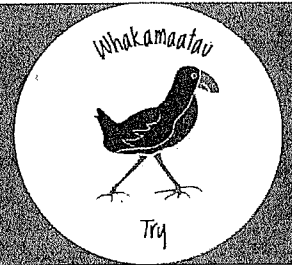
Jo - [centremanager.pukekopreschool@gmail.com](mailto:centremanager.pukekopreschool@gmail.com) or

Emma - [chairperson.pukekopreschool@gmail.com](mailto:chairperson.pukekopreschool@gmail.com)



# Tauwhare School

RD7, Hamilton 3287, New Zealand  
e: admin@tauwhare.school.nz  
t: 07 824 0864



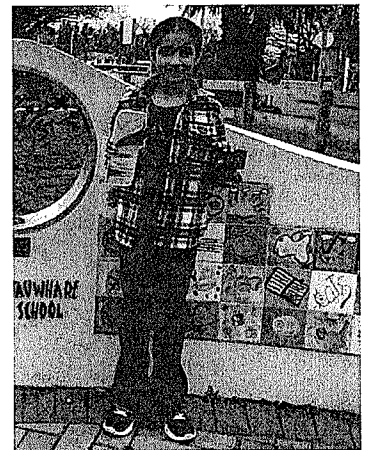
## Accomplished Learners Striving for Success in Tomorrows World

### Principal Message

Wow, the cold weather really hit this week, I even put a jacket on for a short time. This has not stopped any of the action happening across Tauwhare, with all students working and trying hard to be their best. The cross-country training has been very impressive, I am really looking forward to the big day where each person shows they are capable of more than they thought they were. **“If you are working on something that you really care about, you don’t have to be pushed. The vision pulls you.”**

### Mathematics Champion - Simrat

A HUGE congratulations to Simrat who won a Sip Abacus Math Competition. A nationwide math competition held during the school holidays. She is going on to represent New Zealand in Sri Lanka in October this year. We are so proud of her accomplishment, well done Simrat!!!



### Te Ahi Ora

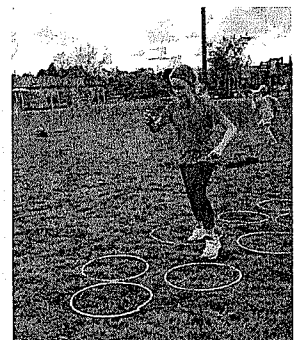
We are very excited to have Te Ahi Ora coming to work with us at Tauwhare School! Te Ahi Ora is a mindful practice that energises the body and stimulates the mind. The Te Ahi Ora practitioners provide fire performance lessons to schools, along with complimentary fire performances and lessons in the evenings for communities.

Te Ahi Ora will be in school on **Thursday 3rd and Friday 4th of August.** The day sessions will involve teaching the mindful practices and skills required (with no fire involved). We encourage you to come along to the evening sessions and to be able to perform with fire. You may like to have a go at it yourself too!

### Tauwhare News Team – Isla, Krystal and Emily

#### Cross Country Training

“We run and jump over stuff because that is what cross country is when we do it,” says Lexi from Room 7. Children in all classes are running around the back field each day to keep their fitness levels up. The reason that every class is running around the field is because the big day of cross country is coming up for all of us very soon.



#### Science Experiments

Every class has been doing science experiments. In Room 4 they have been having fun learning about bubbles, Room 1 has worked with crystallisation, carbon and nanochemical science. “I love science because something causes a little explosion in my mind and because of its creativity that we get to explore and the math that we learn,” says Miela of Room 6.



# TAUWHARE INDOOR BOWLS NEWSLETTER

Welcome to the July newsletter from the Tauwhare Indoor Bowling Club.

Not a lot has changed at the bowling club this month. As always, we could still do with more members to make sure that the club continues to survive. It was good to see a player that had played at Tauwhare come along to our club night and also bring along his partner.

Why not come along for a social evening and while there, give bowls a try. We endeavour to be finished between 9.30pm and 10pm. If you do decide to come along, then, ideally be at the hall by 7.20pm so the draw can be done ready to start at 7.30pm. If you want to come and try bowls but would prefer not to be put into a team, then that is fine. We have players within the club that would be happy to introduce you to the game. You do not need to bring anything along – just wear flat soled shoes. Our aim going forward is to make bowls a fun social evening.

Club night results for the last 4 weeks:-

Club night winners 22.06.23 were:-

Rosalie Arnold and Lockie Verner

29.06.23 was a social progressive night with Tamahere and Matangi

Championship Singles on 06.07.23 :-

Winner was Bev Meads and runner up was Darron Cutler

Club night winners on 13.07.23 were:-

Bev Meads, Daniel McNally and Sharnie

Our programme to the end of August -

20.07.23	Open Triples Tournament
27.07.23	Club Night
03.08.23	Esme Pope Memorial – Handicap Singles
10.08.23	Erin Rosebowl – Triples
17.08.23	Club Night
24.08.23	Club Night
31.08.23	Final Points Night

If you would like more information, please do not hesitate to contact one of the following people: -

Bev Meads	021 172 7822 or email - <a href="mailto:bev.meads@gmail.com">bev.meads@gmail.com</a>
Jim & Rosalie Arnold	07 887 4832
Ana Duncan	027 475 7925
John Cottle	07 824 0992 or 027 524 0992

# RECIPES

## LEMON CURD

Makes 2 ½ - 3 cups

Rind and juice of 4 lemons  
125g Butter melted  
2 cups Caster Sugar  
4 eggs beaten



Mix all ingredients in the top of a double-boiler and stir over boiling water until the mixture thickens. Pour into sterilised jars and store in the refrigerator.

## LEMON SYRUP LOAF

1 cup Caster Sugar  
100g Butter, softened  
½ cup milk  
¼ Teaspoon salt  
¼ cup Caster Sugar

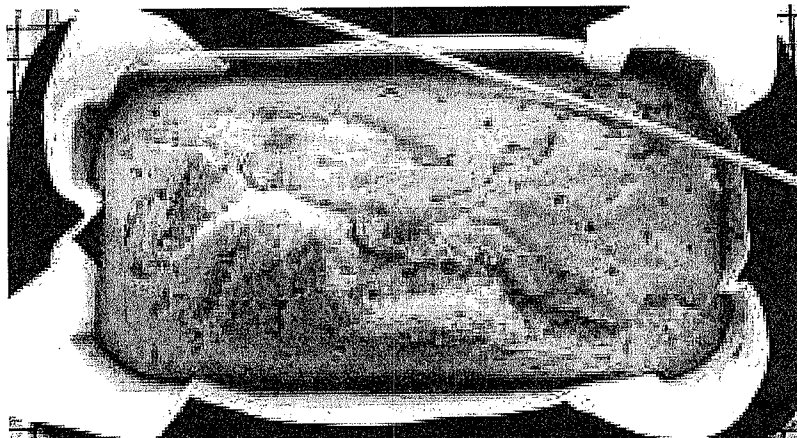
Grated rind of 2 lemons  
2 eggs  
1 ¾ cups self-raising flour  
¼ cup lemon juice

Preheat the oven to 180 C. In a food processor mix the first measure of caster sugar and the lemon rind. Add the butter and process until creamy; add the eggs, milk, flour and salt. Line a 21x12cm loaf tin with baking paper. Grease the paper and pour in the mixture.

Bake for 50-60 minutes or until cooked when the loaf shrinks from the sides of the tin.

While the loaf bakes, mix the lemon juice with the ¼ cup caster sugar. As soon as you remove the loaf from the oven drizzle this mixture over its surface. Remove the loaf from the tin by lifting the paper and cool on a rack. Serve with fresh lemon curd.

**When juicing citrus, microwave the whole fruit on high 15-20 seconds and it will squeeze more easily.**



# TAMAHERE-WOODLANDS COUNCILLORS'

## UPDATE AUGUST 2023

### Community resilience

Trees down, roads closed, electricity outages and flooding – we've experienced it all in parts of the Tamahere-Woodlands Ward this year because of wild weather events – events that are likely to become more commonplace because of climate change.

#### Building community resilience

Waikato District Council's vision that we work together to build liveable, thriving and connected communities is a vision that needs to encompass good times and bad. As a community we need to plan for those unexpected events so that we know how we can pull together to help our neighbours and ourselves get through emergencies.

Waikato District Council staff provide the core civil defence emergency management (CDEM) team for the District – and they train for the roles they take on. They also form part of the CDEM group for the wider Waikato region. However, they are also reliant on community groups and local volunteers with local knowledge.

Where do you direct people to go if they need to evacuate their homes? Who can supply food and bedding if it's required? Who might need access to special care provisions?

The Council would like to help local communities get together to develop local 'Community Response Plans' to identify the potential hazards to prepare for, and the local resources and people who can be called upon if needed in an emergency.

Templates for developing a local Community Response Plan are available and your Councillors are distributing these to local hall and community committees in the Ward to start the ball rolling. If you would like to be involved, please get in touch.

#### Have your say

Consultation is now open on two proposed Council strategies and an update to the Council's Freedom Camping Bylaw.

- **Freedom Camping Bylaw** – Thank you to those who contributed to early engagement on updating this Bylaw. The proposed new Bylaw is now open for consultation until Monday 14 August. It is aligned with recent changes to Government legislation. It identifies areas in the District that are prohibited or have specific restrictions for freedom camping, and designates areas for freedom camping for vehicles that are not self-contained. Hearings and deliberations on the proposed Bylaw will be held on 12-13 September.
- **Community Facilities Strategy** – Early engagement is invited to help develop a strategy to provide direction for managing our community facilities (including halls, libraries, sports facilities, pools and public toilets) for the next 20 years. Drop-in sessions to hear more about this include an online session on Tuesday 1 August, 5.30-6.30pm – please register for this on the Council's consultation website at [www.shape.waikatodistrict.govt.nz](http://www.shape.waikatodistrict.govt.nz). This early opportunity for consultation closes on Sunday 13 August.

- **Connectivity Strategy** – This will replace the existing Trails Strategy 2016 to provide direction for the development and management of trails (including walking paths, multi-use tracks, biking and horse-riding trails) over the next five years. It will also guide the Council on projects and activities that should be considered for funding through the next Long Term Plan 2024-34. You can hear more about this strategy at the same drop-in sessions that are offered for the proposed Community Facilities Strategy, including the online session on Tuesday 1 August at 5.30pm. This consultation also closes on Sunday 13 August.

### **Community catch-up**

Thank you to all those hall and community committee representatives who turned out for a general 'catch-up' with your Councillors and senior Council staff on 11 July. The get-together was for your community leaders and representatives to hear more about the Council's planning processes, including the Annual Plan that has now been adopted for the current financial year. We hope this will be the first of more such sessions to enable us all to work better together as we move forward.

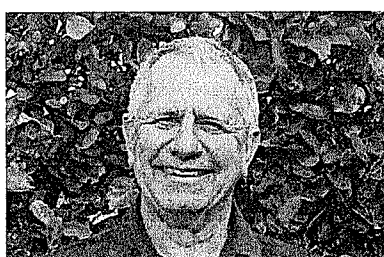
### **Rural Economic Advisory Panel**

The Council is in the early stages of establishing a rural economic advisory panel to strengthen the rural voice on Council matters. The panel will include representatives of the farming and rural business communities, as well as rural services and support organisations such as Rural Women NZ. An inaugural meeting has been held to establish terms of reference for the panel.

### **Census**

A recent presentation on the Census for the Council showed that 60% of our District population is defined as 'remote/rural' (compared with 14.4% of the national population) and 40% of our people live in small urban or rural settlements (compared with 15.1% of the national population). Despite the impact of Cyclone Gabrielle, 89-91% of people resident in New Zealand responded to the Census, including in Waikato District. The first 2023 Census data is expected in May 2024.

### ***Contact your Tamahere-Woodlands Councillors:***



Crystal Beavis, mob 0275 957 927, email [crystal.beavis@waidc.govt.nz](mailto:crystal.beavis@waidc.govt.nz)  
Mike Keir, mob 027 449 3012, email [mike.keir@waidc.govt.nz](mailto:mike.keir@waidc.govt.nz)

# Random noise

I talked a while back about how you shouldn't be using Huawei equipment, due to it's deep ties with the Chinese government and the multiple security problems with it's devices (NZ seems to've largely ignored this, probably for trade reasons, while Aus, UK and the US have taken stronger stances). But it turns out you also shouldn't be using phone brands owned by China full-stop. This includes but is not limited to the following: Oppo, OnePlus, Realme (not the NZ site, the Chinese cellphone brand), Gigaset, Huawei and Xiaomi.

As antivirus and internet security company Trend Micro has found (more details here: <https://www.techspot.com/news/98667-millions-android-phones-come-pre-installed-malware-there.html>), literally millions of Android-based phones, mostly made by Chinese brands, have come with malware (a general term describing software that performs actions not to the user's advantage, including viruses, credit card stealers, advertising, cryptomining software and tracking software) pre-installed, meaning the user didn't have to do anything; the bad software was already active from the moment they bought the phone.

The sensible solution is either to opt for an Apple phone, or if you're like me and you prefer the Android OS, go for one of the bigger-name non-Chinese Android brands such as Google, Sony or Samsung (and if you care about ethical sourcing of materials, avoid Samsung – more info here: <https://www.ethicalconsumer.org/technology/shopping-guide/ethical-mobile-phones>).

Since I've run out of things to talk about on this subject, let's jump ship to a related topic: Ultrasound cross-device tracking. While this technology has been around since at least 2015, if not before, the ability of some smartphone applications to recognise your location or TV-viewing decisions based on small inaudible ultrasound signatures broadcasted by other digital devices such as TV's, is somewhat unsettling.

Data on how many applications or devices are currently doing this is not immediately obvious, but as of 2017 at least 234 apps were found to be doing so, and were removed from Apple and Android app stores. It seems like the technology may not have had significant uptake in recent years, but other forms of cross-device tracking such as Google accounts have become more ubiquitous. More info here: <https://nordvpn.com/blog/spying-gadgets-research/>

Need help adjusting your tinfoil hats? Phone Matt at 0211348576 or email:

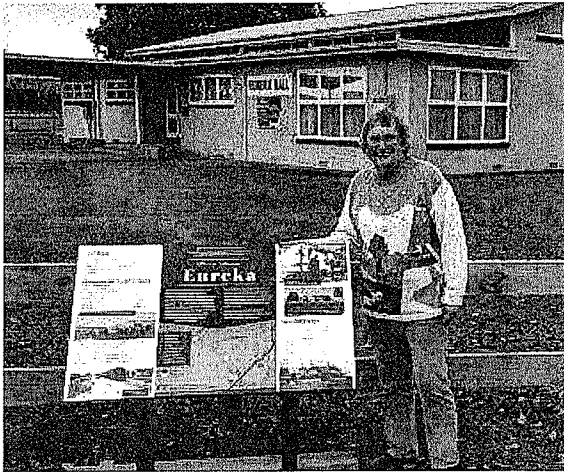
**info@homepcsupport.co.nz**

\$70 per hour, or \$60 for drop-off-to-workshop services.



**Bentley Home PC Support**

If you've been past the Eureka Hall recently I hope you have made time to stop and look at what our Heritage Committee has been doing and perused our new flash sign.



Rob McGuire had the idea, way back in October 2019, that the various areas covered by our broad based Committee had some interesting histories, and many folk today have never heard about what went on as the districts were being settled.

We put the idea to Council and some funding was approved in March 2020. Then we all got to work, researching when houses were built, where the milk was taken, how the drains were dug, and where the kids went to school, and anything else of purely local interest.

For Eureka at least, the countryside originally was known as the Piako swamp, wet enough for Maori to use boats on, and the drains were all dug by hand. And from 1884 we had our own station, and could travel into Hamilton by train when the roads were bad.

The writing up and finding good enough photos took time for each of us, and then we had to decide what we wanted the signs to look like, who could manufacture them (Metal Image), who could do the professional design work (Sonia from What's the Story), and get Ngaati Haaua and Ngaati Wairere support for what we were doing.

Of course, our beloved Kitty Burton, who was managing it all, had to go back a number of times to Council to get a bit more cash, which was forthcoming, while WEL and Trust Waikato also came to the party over time.

Then it turned out that for signs on Council land there was one firm to install them (City Care), and quite another (Alliance) to install ones like ours on road berms.

So we now have one, and there are quite a number dotted around our Southern Council area, and even more than one in some places. (Matangi, Gordonton, Newstead, Tamahere and Tauwhare).

As you drive around the district, keep an eye out for heritage signs and stop and read and admire them all. They may have taken years to create, but they took a lot of work by a lot of people.

If this has made you interested in local history, our Committee has been compiling a website for several years now, and you can find a lot more information on <http://heritagewaikato.org>.

To look specifically at Eureka go to <http://heritagewaikato.org/settlement/Eureka>.



## MY WORLD OF TRAVEL

*"I'm in Love with the cities I've never been to and the people I have never met"* John Green

Many of us grow up with that passion of a certain place, time or country we have an emotional attachment to.

This stays with us our whole lives, until we decide this is the time to go and follow that inner feeling. You won't be disappointed!

My personal passion was Victorian England. I felt I had a real connection. Although, when I did travel through England, of course it was not in Victorian times but the history was there. My most special moment was York, where the York Minster stands in unassuming beauty. One of the most beautiful churches I have visited on my travels.

Since then, I have travelled to much of Europe and each time I am in awe of the romance and history it has to offer. I often say Europeans take for granted the beauty and romance of where they live. Everywhere you venture there is a story to be told. From Shakespeare's Garden in Stratford on Avon to the Lucerne Lion in Switzerland.

Since covid I am finding my clients ready again to travel. With new adventures, places to visit and to try new things. They are keen to listen to ideas that I suggest - the most enjoyable part of my job as a travel agent.

Travel comes in all forms. From Golfing cruises to horse riding holidays throughout many countries. Walk the Camino as the Pilgrims did. Do that heritage holiday to discover where your ancestors came from. Antarctica has become very popular with great cruising opportunities for those who have done it all. Can you imagine waking up next to an iceberg?

For those who do not want to venture too far, how about Cairns and Port Douglas? This is an amazing destination where you can enjoy beach or rain forest and with the Great Barrier Reef in the background for that snorkeling adventure.

Last note - people tell me the world is an awful place. Remember 90 percent of the world is beautiful and with beautiful people. Go discover for yourself.

Oh, if any one would like a chat about travelling or need information such as insurance, visas etc give me a call.

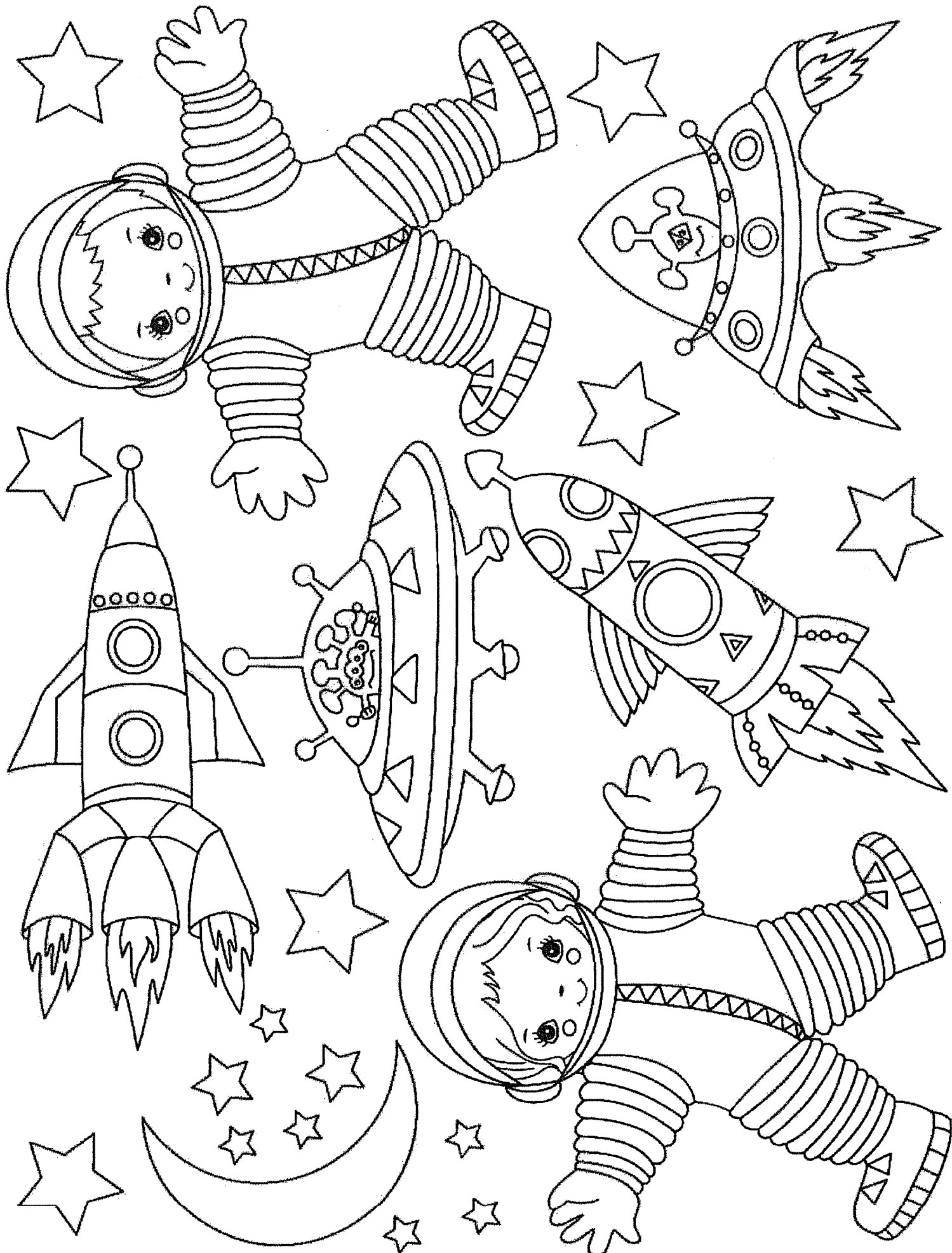
Ciao for now

Edie Swney

The travelbrokers.co.nz

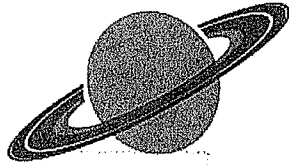
Hello world

021 734140



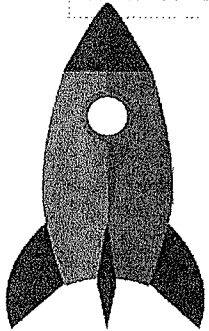
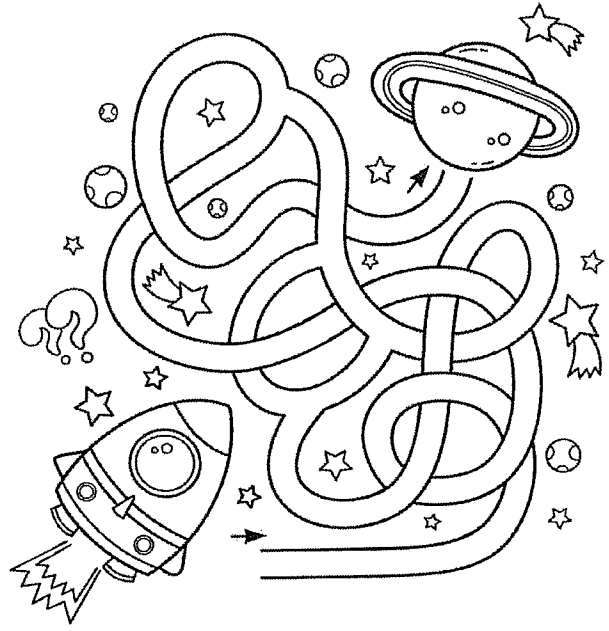
# Outer Space

## Word Search Puzzle



Help the Rocket Ship reach the Planet

L H Z S C O N S T E L L A T I O N  
 Z R U R A N U S R L F S R G E X E  
 K Z B Y O T R N J G Y S T A R S P  
 H R J O V O U W E J P I Y L O A T  
 R K M E T E O R N C C D S A C Q U  
 V E N U S E L F N U D L Q X K P N  
 D J S T F H L P C M O Z A Y E M E  
 M U T I S A T E L L I T E U T I N  
 I P Y K C Z O L S D E K O R N W O  
 L I T O O B L L I C U T B P O C K  
 K T H H M J C O S A O F E D M T H  
 Y E I G E V R P S M H P T M E A B  
 W R H E T E B G U I F N E W R I I  
 A S H U T T L E Q S U M W Y C W M  
 Y L W S C A S T R O N A U T U V S  
 P L A N E T S L C U N I V E R S E  
 B L A C K H O L E R E Z I K Y V U



- ASTEROID
- ASTRONAUT
- BLACK HOLE
- COMET
- CONSTELLATION
- COUNTDOWN
- GALAXY
- JUPITER
- LAUNCH
- MERCURY
- METEOR
- MILKY WAY
- MOON
- NEPTUNE
- PLANETS
- ROCKET
- SATELLITE
- SATURN
- SHUTTLE
- STARS
- TELESCOPE
- UNIVERSE
- URANUS
- VENUS

“What is Saturn’s favorite movie? Lord of the Rings”

## Space Crossword

1. Meteorite 2. Telescope  
 3. Astronaut 4. Alien 5. Planet  
 6. Star 7. Satellite 8. Rocket

# COMPUTERISED BULK SPREADERS LTD

## Cartage & Spreading



FERTILISER, LIME, UREA

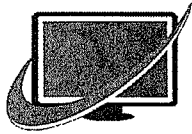
SPECIALISTS

Competitive rates

PETER JONES

027 496 3370

*\*36 years service in the Morrinsville district\**



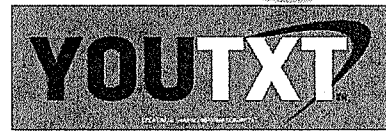
# CTAS

100% NZ Owned and Operated

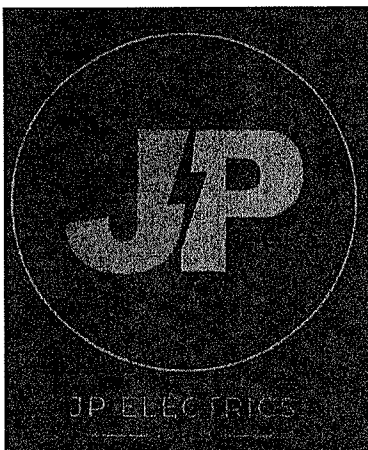
- TXT and Email Alerts and Reminders
- TXT Shortcodes for your business or club
- Flight Status by TXTing your Flight to 8808
- Live Video and Audio Streaming on the Internet



Create and Share information by TXT



[www.ctas.nz](http://www.ctas.nz) | [sales@ctas.nz](mailto:sales@ctas.nz) | [www.youtxt.nz](http://www.youtxt.nz)



## JAMES PALMER

REGISTERED ELECTRICIAN

[james@jpelectrics.nz](mailto:james@jpelectrics.nz)

027 756 6804

Residential – Commercial – Heat Pumps



**TAUWHARE HOME KILLS**

**TREVOR & LEONIE BRUNTON**

**1126 TAUWHARE ROAD**

**PH: 07 824 0880**

**Fx: 07 824 0809**

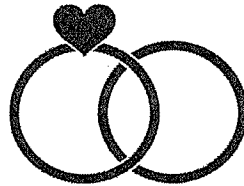
*Sam Ware*

MARRIAGE CELEBRANT

**021 897 706**

[sam@samwarecelebrant.co.nz](mailto:sam@samwarecelebrant.co.nz)

[www.samwarecelebrant.co.nz](http://www.samwarecelebrant.co.nz)



**EUREKA  
POULTRY FARM**

13 Hooper Road

Ph 824 1762

**NIC & MARIA STOLWYK**

**Hobby Hens**

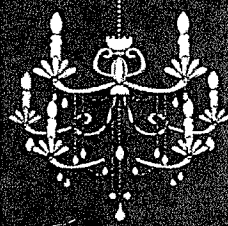


Young pullets from  
5 weeks to point-of-lay  
Great for lifestylers  
Bagged up chook manure  
Hours Mon-Sat 8-6

**If you need this  
AED  
You Need an  
Ambulance!!!**

**Call 111**

**Ask for Ambulance  
Give the location of  
this box as shown  
below. Ambulance  
control will give you  
the code, Remove the  
cover, Enter Code,  
Turn Handle**



*Rae  
Winter*

*Interiors on Hoeka*

GIFTS - INTERIORS - KIDS

196 HOEKA ROAD, RD4  
MATANGI, HAMILTON

FOR AN APPOINTMENT  
CONTACT ME

029 886 6983

[interiorsonhoeka@gmail.com](mailto:interiorsonhoeka@gmail.com)



Safe H2O

safe water fast

**Premium water tank cleaning and purification  
without the premium price tag**

Resolve smells, bad tastes and contamination  
No purchasing replacement water  
No damage to inside of tanks  
100% satisfaction guaranteed

Ministry of Health recommend annual servicing of your collection tanks

**When were yours last cleaned?**

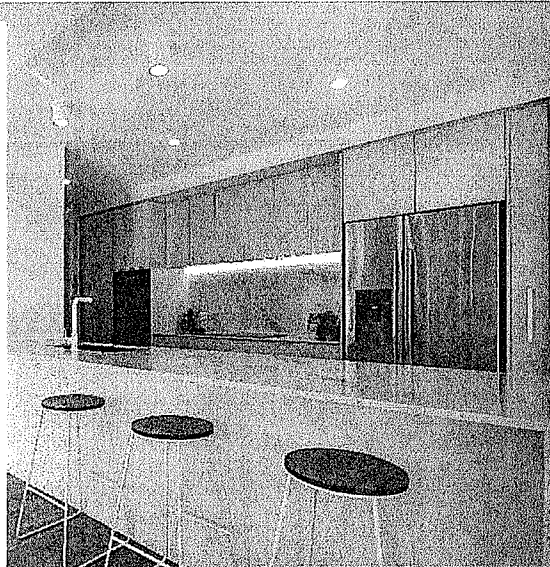
Craig Nicholson 027 660 5329 0800 SAFE H2O  
[cjn@safeh2o.co.nz](mailto:cjn@safeh2o.co.nz) [www.safeh2o.co.nz](http://www.safeh2o.co.nz)

**The Kitchen  
Lady**

For your design,  
manufacture and  
installation needs.  
We come to you.

RENEE MOUAT  
021 177 8695

[www.thekitchenlady.nz](http://www.thekitchenlady.nz)



KITCHENS | VANITIES | LAUNDRIES | WARDROBES

**EUREKA HALL FOR HIRE**

**Weddings, parties,  
meetings, a great venue**

**To book**

**Email**

[eurekahallwaikato@gmail.com](mailto:eurekahallwaikato@gmail.com)

# nzgardensheds

*the best little Sheds around!*

Your local garden shed supplier of NZ made, self assemble Garden Sheds (Zincalume or Colour Steel)

## GET IN TOUCH...

- \* EASY ASSEMBLY
- \* MADE TO LAST!

### Waikato Shed Company

218 Hunter Road, Eureka,  
Hamilton  
Phone: 07 824 1045  
Email: sales@nzgardensheds.co.nz

## ENQUIRE FOR A BROCHURE NOW

## FRESH APPLES & PEARS STONEFRUIT IN SEASON

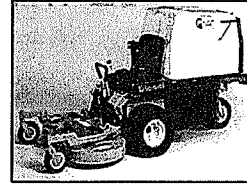


### NEWSTEAD ORCHARD 552 Morrinsville Road

OPEN MON-SAT.  
W J McMiken & Co  
Morrinsville Road  
Tel. 856 4478

## LAWNMOWING & GARDENING SERVICES

Professional lawn & garden-care service



### Alex & Sharyn MacDonald

For free no-obligation quote:

Phone: 027 479 7282  
or 027 308 6781

Email: macdonaldmowing@gmail.com  
www.lawnandgardenservices.co.nz

Residential - Rural - Commercial Mowing  
Spraying - Fertilizing - Weedeating



Servicing and installation on all types of pumps

Full water treatment service available

### DAREN ROSS

Ph: 8241 726

or

0274 346 571

Email: admin@rosspumps.co.nz



## meat the need

### NZ FARMERS, FEEDING NZ FAMILIES

DO YOU WANT TO HELP  
FEED NZ FAMILIES?

A donation of just one cow will  
provide over 650 meals in the  
community.

Together as nz farmers we  
can feed nz families.

Visit us at [meattheneed.org](http://meattheneed.org)  
or call us on  
**0800 632884**

## HAIRFIELDS

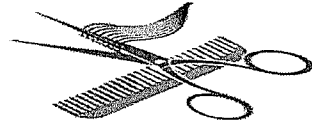
HAIR DESIGN  
95 HOOPER ROAD

Sharon Laurent

Full salon facility in Eureka  
Total hair care professional  
with many years experience  
Agent for Nutrimetics also

Covid19 vaccine pass required

Open Tuesday to Thursday  
Late nights Tues/Thurs  
Tel. 824 1712 or 027 280 5978



161 Morrinsville Road, Hamilton, 3286  
Phone: 07 856 4522 Fax: 07 856 9487 Email:  
enquiries@newsteadvets.co.nz  
Website: www.newsteadvets.co.nz

Newstead Vets offer a full range of veterinary services for small

animals including:

- Consultations (by appointment only)
- Soft Tissue and Orthopaedic Surgery
- Digital Radiography and Ultrasonography
- NZVA Microchipping Accredited Practice
- Nutrition and Product Advice
- Rural location with ample parking
- Referral to Specialists
- PennHIP Certified
- Full Laboratory Service
- Hospitalisation
- Cremation Service
- Convenient Online Shop

# Earthworks, Excavation, Farmworks and Concrete Laying

-Your Waikato wide specialist -

No job too small, too big, too tough - Let us do the hard work for you!



- ✓ Diggers, Bobcats, Trucks available
- ✓ Feed, Arena Pads & Shed cleanouts
- ✓ Farm Race installation
- ✓ Drainage, Landscaping & Lawns
- ✓ Site preparation and Clearing
- ✓ Topsoil, Race Rock, Metal and Sand

- ✓ Concrete House and Garage pads
- ✓ Concrete Driveway installation
- ✓ Patios, Outdoor living, Foot paths
- ✓ Swimming Pool excavation
- ✓ Licensed Building Practitioner
- ✓ Certified - Foundations



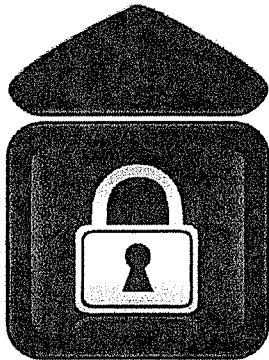
## Dig It Earthworks & Concrete LTD

**FREE QUOTE! Phone Liam 02102839174**

www.digitearthworks.co.nz

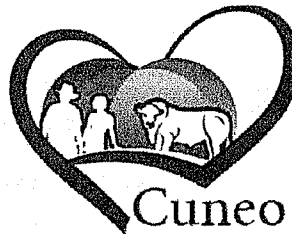
liam@digitearthworks.co.nz

www.facebook.com/Dig-It-Earthworks-Concrete



## Eureka Storage

Many options from 9m2 - 307m2  
Short term + long term  
Call me to discuss your requirements



## Cuneo Piedmontese

HEART • HEALTHY • BEEF

Pedigree + Commercial  
Purebreeds For Sale  
Bulls, cows + yearlings

**Don Knight 0274950535**

**117 Hooper Road, Eureka**



Jackson Contracting

*Growing Together*

Maize, Grass  
Silage & Hay  
for Sale!

**Providing Professional Agricultural Contracting Services**

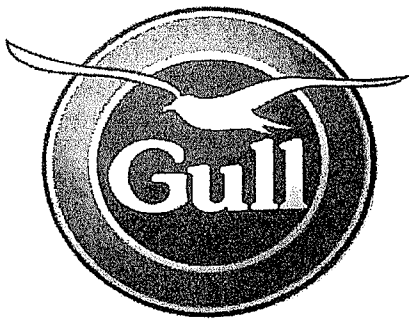


**Services Include:**

- Baling, Round, Big Square & Conventional
- Spraying
- Grass Silage - Chopper & Loader wagons
- Maize Silage - Cultivations, Planting & Harvesting
- Bulk & Hiab Cartage

**Call Jeremy Rothery for inquiries or bookings 027 526 2441**

[www.jclag.co.nz](http://www.jclag.co.nz)



# **GULL EUREKA**

**PETROL – DIESEL – LPG - OILS & LUBRICANTS**

**FARM SUPPLIES – GROCERY ITEMS**

SHOP HOURS: MONDAY TO FRIDAY 7:30AM – 6:00PM  
SATURDAY 8.00AM – 12.00PM

**AND NOW: FUEL 24 X 7 PETROL & DIESEL FROM OPT (OUTDOOR  
PAYMENT TERMINAL)**

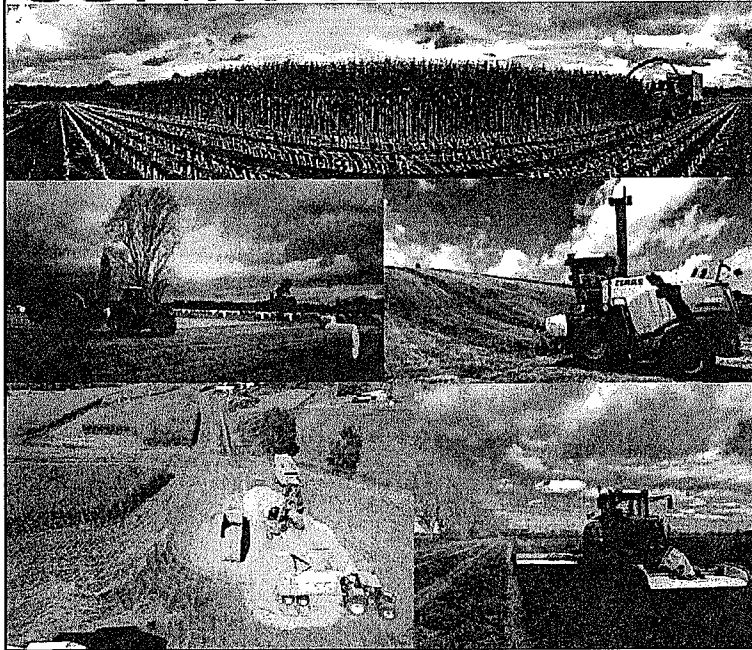
EFTPOS – RD1 FARM SOURCE – FARMLANDS – CARDLINK

AMEX – MASTERCARD – VISA



us on Facebook for discount day and promotional information

## **Walling** **CONTRACTING LTD**



For all your:

- . Ground Cultivation
- . Planting
- . Re-Grassing
- . Under Sowing
- . Grass Silage
- . Maize Silage
- . Digger &
- . Spray Requirements

Ph: 07 824 0894

Zach Walling: 027 450 0125

Email:

walling.contracting.ltd@gmail.com





# WAIKATO SHED COMPANY ✓✓

great sheds, done right!

## Karangahake Habitable Kitset Shed House



A magnificent kitset shed home currently under construction, by builders Claude Construction renowned for exceptional craftsmanship.

Designed by Dylan McGrigor (NCE Northern Consulting Engineers) the shed features the innovative Steelhaus System, allowing for seamless integration with the portal frame shed system.

The remarkable use of New Zealand Steel, renowned for its durability and strength, forming the solid foundation of this impressive structure.

The stunning Garador Roller Doors adorning the entrance offer a touch of elegance to the overall aesthetic, their smooth operation and robust construction perfectly compliment the shed house's design and functionality.

## Local Company based at Eureka

Our sheds are all made from NZ Steel and certified NZ made so by purchasing from us you are supporting more than one New Zealand Business

Lifestyle  
Rural  
Industrial  
Habitable  
Sleepout

## Waikato Shed Company

218 Hunter Road

Eureka

07 824 1045

[Enquiries@waikatosheds.co.nz](mailto:Enquiries@waikatosheds.co.nz)

[www.waikatosheds.co.nz](http://www.waikatosheds.co.nz)

### CONNECT WITH US





## Local Company based at Eureka

Our sheds are all made from NZ Steel and certified NZ made so by purchasing from us you are supporting more than one New Zealand Business

Lifestyle  
Rural  
Industrial  
Habitable  
Sleepout

### No Bull Sheds

218 Hunter Road  
Eureka  
07 824 1045

[Enquiries@nobullsheds.co.nz](mailto:Enquiries@nobullsheds.co.nz)

[www.nobullsheds.co.nz](http://www.nobullsheds.co.nz)

## MENZ SHED Epic Concrete Slab Pour



On a foggy Waikato morning we continue an inspiring local construction journey in Morrinsville, the concrete slab pour by A1Bobcats & Concrete and Sam from Spooner Concrete Ltd on the tools.

Tony Richardson (Titus Consulting Engineering) provided the Geotech report and designed the slab for modern earthquake and liquefaction possibilities.

BOWERS BROTHERS CONCRETE delivered 14 truck loads (67cbm of concrete), helping out the Menz Shed.

Check out the video on



YouTube