

Eureka Express

Vol XLIII No. 7 Circ 315

August 2022

www.eurekaexpress.co.nz

editor@eurekaexpress.co.nz



A warm welcome to Spring

EDITORIAL

Babak and Sandra Paymani have been part of the Eureka community since 2005. The Appleton Lane residents have Sandra's parents residing on site and enjoy being surrounded by animals and countryside. Their two adult sons have flown the coop, and now live and work in Thames.

Babak's story is an interesting one, and a far cry from your typical Kiwi experience. He was born in Shiraz, Iran, into a Baha'i family, and spent his early years there. Religious persecution forced him to flee the country in 1989. Iranian Baha'is constitute Iran's largest religious minority and as such, they live under constant duress and are denied access to higher education. This has a serious impact on their job prospects and livelihoods.

In his early twenties, Babak escaped to Pakistan where he lived for two years before being accepted as a refugee to New Zealand. He couldn't speak English and had no family here but was determined to make a go of things. He landed a job at Wendy's in Auckland three weeks after arrival.

Babak worked his way up from hamburger maker to area manager, while honing his English skills on the job and at adult night classes. He later joined The Warehouse where he had several roles, including store manager and training manager, and gained numerous regional and national awards. He moved onto a managerial role for Farmers retail before real estate beckoned and now enjoys helping buyers and sellers through their journey of buying or selling lifestyle or residential properties.

New Zealand has offered Babak many opportunities he would otherwise not have had in his home country. He met his wife Sandra, from Dinsdale, in 1990 and they married two years later. They are now grandparents to two young and much-cherished boys. The couple have owned and operated two successful childcare centres in Glenview and give a lot to the local community. Sandra recently retrained to become a primary school teacher and works at Tamahere Model Country School where she has found her niche.

Babak loves the Eureka lifestyle, enjoys getting out in his boat for a day's fishing or away in the family motorhome, and is a dab hand at cooking. Persian dishes are his specialty. He's catered for numerous functions, is a fantastic host, and has laid on many a fine party and celebration.

SNIPPETS – WHAT'S HAPPENING IN THE COMMUNITY

FAREWELL to the Whiteley family of Eureka Road.

Barry and Christine moved into their newly built home in 1998 with their two young children, Megan and Michael.

Barry served on the Eureka School Board before it closed in 2004, and the community is also indebted to talented Christine for her support of the Hall committee over the years, and not least her donation of her beautifully crafted ceramic poppies for use on Anzac Days.

We wish Barry and Christine well in their move to a sea view at Omokoroa. Our very best wishes on your new 'adventure'.

COMMUNITY POT LUCK LUNCHEON

SUNDAY 2ND OCTOBER 12.30 ONWARDS.

THIS IS A FAMILY EVENT SO BRING THE KIDS.

ALL YOU DO IS BRING FINGER FOOD, A SAVOURY AND A SWEET.

ALL REFRESHMENTS WILL BE SUPPLIED.

**THIS IS THE FIRST ONE FOR A COUPLE OF YEARS, SO COME ALONG AND MEET
NEW PEOPLE IN YOUR COMMUNITY.**

WEATHER

Weather for July 2022		
Rainfall total	220mm	
Rain Total for year	716mm	
Rainy days	21	
Most daily rainfall	62mm	Across 7-8 th
Highest wind speed	46.8 km/hr	12 th & 25 th July
Temp high	18.2 C	8 th July
Temp low	0.9 C	17 th July

HALL UPDATE

The Hall Committee AGM was held on Thursday 18th. Despite no local people attending apart from the committee, which is disappointing, we had an amazing turn out from the council. Rob McGuire our Eureka Ward councillor attended, along with Chris Woolerton who is standing this election for this election, and Samantha Baker, the team leader for the team who are now overseeing the 33 council halls in the district.

We were presented with so much information on how the council can help us moving forward, so we can keep the hall in its current state, and continue to have it utilised for the purpose it was built for 50 years ago. A venue for the community to gather. It also is a place which will be used in any Civil Defence situation should it occur.

The Council is so impressed at how the hall has been maintained since its build, and that is due to the fully committed and passionate committees that have worked tirelessly to ensure the hall was always maintained to the highest and safest levels. It is a thankless job, but a very rewarding one. I would like to thank the members of the past committees for the work they have done, and also thank the current committee members for the commitment they have to ensure we continue the legacy.

We have put in an application for funds to help us paint the interior of the hall, replace the lino in the kitchen, entrance, hall and bathrooms, and also a playground. We feel this would be such an asset for the community. I will keep you posted.

As it was an AGM the election of officers took place. Gayle Orr was voted in as Chairperson, Shaun Bartlett is now the new treasurer, (welcome Shaun), and we had no one to stand as secretary. We really need someone to assist in taking the bookings of the hall. This is all done via email, so if you think this will interest you, please contact Gayle to discuss it. We would love to hear from someone to help with this.

The committee is shrinking in numbers, and we do need more helpers. We don't meet every month, but we do keep in contact via email. Once again if you think you would like to help the committee keep the legacy of the past committees, please contact us. We would love to hear from you. In the meantime, keep warm and dry.

Gayle Orr, Chairperson Ph: 0272917150

Usage	Residents	Non - Residents
Meeting Supper room per day	\$ 25	\$ 50
Hall per day	\$ 50	\$100
Social function	\$150	\$250
Weddings & Dance	\$300	\$500
Children's party	\$ 30	\$ 30
Bond	\$400 Secretary's discretion	\$500 Secretary's discretion

For bookings please email eurekahallwaikato@gmail.com

TAUWHARE INDOOR BOWLING CLUB

Welcome to the August club newsletter.

Well, the end of the season is fast approaching for this year's bowling season.

We are still averaging 8 to 10 on a club night.

If you've not played bowls before, new to the area, or have been in the district for a while & would like to give bowls a try then come along to the Tauwhare Hall on a Thursday evening. Names in by 7.20pm, play starts 7.30pm. The evening usually finishes 9.30pm - 10pm.

You will always be made to feel very welcome. You do not need to bring anything special.

All bowls etc that we use belong to the club. You just need to wear flat soled shoes. We are a friendly, sociable club and there is always much laughter and banter.

Five players from the Tamahere club joined us for a social evening. It was a fun evening with players from both clubs to make up mixed teams.

The Eastern Triples were held on the 18.08.22 at Tauwhare.

The team of Bev Meads, Rosalie Arnold and Lorraine Stobie were runner up.

Club night results – 21.07.22 - we played the brown bowl challenge against Taupiri and won

28.07.22 – Winners were Bev Meads and Robyn Bargh

04.08.22 – Winners were Rosalie Arnold, Heather Bargh and Barb Bright

11.08.22 – Tamahere Visit

18.08.22 – Eastern Triples

The programme for August/September is:-

25.08.22 – Club night – final point's night

01.09.22 – President and Vice President Night

08.09.22 – Patrons Night

15.09.22 – Burnside Challenge against Matangi

22.09.22 – AGM and Prize giving

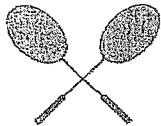
If you would like more information, don't hesitate to contact one of the following people.

Jim and Rosalie Arnold 07 887 4832

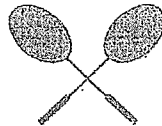
Bev Meads 021 172 7822

Kevin Williams 07 824 0728

It is never too late in the season to come along and have a try at bowls.



EUREKA BADMINTON CLUB




JUNIOR NEWS

Junior Badminton is underway at Matangi Hall
every Wednesday 6pm to 7:30pm

New players welcome. Racquets available

From about 8 years upwards. Come along and give it a try

For further information please phone Bryce on 07 824 0699



EUREKA EXPRESS – Advertising Rates 2022

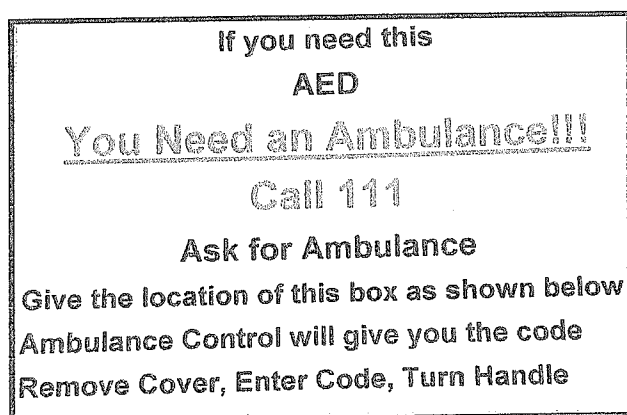
Classified Adverts	Free	CONTACTS
Small Business adverts - x 10 insertions	\$10/month \$80/year	Glenys Middlemiss (Treasurer)
One third page adverts - x 10 insertions	\$15/month \$120/year	Ph. 07 824 1647 email: tres.eurekaexpress@gmail.com
One half page adverts - x 10 insertions	\$20/month \$160/year	OR editor@eurekaexpress.co.nz

AED (Automated External Defibrillator)

An AED is situated at Eureka Hall.

In case of an emergency phone 111 for an ambulance and ask for the code to open the AED box.

The instructions for use are inside.



TAUWHARE COMMUNITY PLAYGROUP

- FREE PLAYGROUP
- Families and Whanau welcome with children 0-6 years
- Come and join us for a fun morning of play and socialising!
- Tauwhare school multipurpose room
- Thursday mornings during school term
- 9.00 – 11.30 am (feel free to drop in anytime during this time)

We have a shed full of toys to be explored. Each week is different, and we may be on an adventure too so please check the **Tauwhare Playgroup Facebook Page** each week for details on whether we are at the school or out and about.

We look forward to seeing you!

COOKING WITH KAZZA

APRICOT FUDGE CAKE

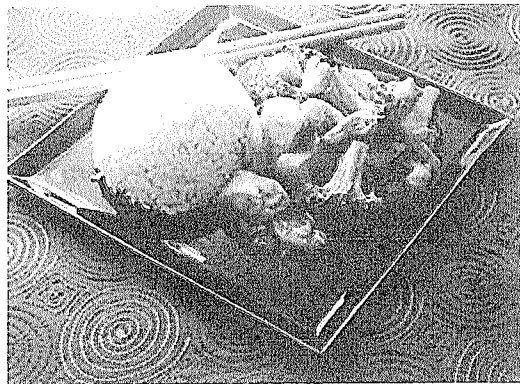
- 125g butter
- ½ tin sweetened condensed milk
- 1 pkt crushed wine biscuits
- 90g brown sugar
- 1 cup cut up dried apricots



Melt butter, brown sugar and condensed milk. Add apricots and biscuits. Press into a greased slice tin and sprinkle with coconut. Put in fridge to set. Keep in fridge.

CHICKEN BROCCOLI, CASHEW, STIR FRY

- 2 tbsp oil
- 500g chicken diced
- 2 stalks celery sliced
- 250g broccoli chopped
- 1 carrot sliced
- 2 tbsp soy sauce
- 2 tbsp sweet chilli sauce
- ½ cup unsalted cashews



Heat 1 tbsp oil. Cook chicken in 2 batches, remove. Heat 1 tbsp oil and add onion, celery, broccoli and carrot. Stir fry till tender (broccoli still bright green). Add soy and chilli sauces. Heat through with chicken. Serve immediately with rice. This recipe can be adapted for other meats and vegetables.

YUMMY PINEAPPLE DIP

- 1 medium tin crushed pineapple drained
- 1 pot cream cheese(250g)
- 1 tin reduced cream
- 2 cloves crushed garlic
- 1 pkt onion soup
- 1-2 tbsp mayonnaise

Combine all ingredients in bowl. Mix well. Chill before serving.

2022 COUNCIL ELECTIONS

The Matangi Community Committee would like to invite you to join them in meeting the candidates standing in the October elections for the Mayoralty & Tamahere-Woodlands Ward.

Where: Matangi Hall

When: Saturday 10th September

Time: 3:30pm

This is your chance to meet the candidates and ask them questions before the voting papers arrive in your mailbox around 16th September.

Information and contact details for all the candidates can be found on the District Council website:

<https://www.waikatodistrict.govt.nz/your-council/local-elections-2022/candidates/>

NEWS FROM YOUR WAIKATO DISTRICT COUNCILLOR - 25th AUGUST 2022

You will be aware that I did not seek re-election this year but will continue to serve my community in other ways. My last day as Eureka Ward Councillor will be election day 8th October. The Mayor and four Councillors did not stand for re-election. The Council for the next three years will therefore look very different and will include a new Councillor for each of the two Māori Wards.

Nominations for Council elections closed on 12th August. The following nominations were received for Mayor and the new Tamahere-Woodlands Ward.



Mayor

Aksel Bech
Jacqui Church

Korikori Hawkins
Ra Puriri

Councillors Tamahere-Woodlands General Ward (two vacancies)

Crystal Beavis
Mike Keir

Chris Woolerton
Luke Furborough

Voting papers including a booklet with candidate profile statements will be arriving in your letterbox from 16 September ahead of Election Day on Saturday 8 October. You will be able to vote by post or by dropping your vote in at one of our Council offices or ballot box events.

To ensure the Council remains neutral throughout the elections, it will not run or endorse any candidate event. However I understand some Meet the Candidate events are planned in Eureka Ward and I would encourage you to attend one of these to help you make an informed decision on who to choose for your new Mayor and Ward Councillors (more details in this issue of the Express).

Your vote is important. Information on the elections and candidates can be found at <https://www.waikatodistrict.govt.nz/your-council/local-elections-2022/candidates>

Last week I attended the **AGM of the Eureka Hall Committee** – it was a good meeting and your local hall is the hands of an excellent committee.

I will be attending the Eureka Community Pot Luck Luncheon on Sunday 2nd October – hope to see you there.

Councils are required by central government legislation (Medium Density Residential Standards) to notify a change to our District Plan to enable more houses to be built in urban areas. Any changes will apply to Huntly, Ngaruawahia, Tuakau and Pokeno with a possibility of Raglan being effected in the future as their population grows. The changes set out by Government are not optional.

Hamilton City and Waipa District Council have signed off their proposed “three and three” related changes but Waikato District Council has not yet notified the required Plan change as we want to get this right and our Mayor has been quoted as saying *“there would be nothing worse than rushing to meet the deadline and relying on the submissions process to iron out any wrinkles. We’d rather get it right first time..... a plan change to give effect to the new rules would still need to be signed off by the end of the current council term in October”*.

We have therefore asked the Minister of Environment for a month's extension to the notification date to 19 September 2022. A press release re the Plan change can be found at <https://www.waikatodistrict.govt.nz/news/media-releases/article/2022/08/18/council-delays-notifying-district-plan-change-to-get-it-right-for-their-communities>

You can view the Variation to the Proposed Waikato District Plan at - www.waikatodistrict.govt.nz/Variation3 Information on this plan change was also sent out with the latest rates statement. Submissions close on Wednesday 30th September.

For some time our Council has been concerned about the number of **bottle stores in the district** and the potential for the number to grow. We last updated our Local Alcohol Policy in 2016 and we began reviewing the policy earlier this year and consulted key stakeholders and invited the public to have their say. Consultation opened on 10 August and closes on 11 September. Council will then hold hearings and deliberations in late September. For more information and to give feedback go to <https://shape.waikatodistrict.govt.nz/local-alcohol-policy>

Contact me anytime

Rob McGuire – Councillor Eureka Ward

Ph. 824 3696 / Mob 0274 970 966 / Email: rob.mcguire@waidc.govt.nz



SIGN LANGUAGE

I have been a deaf advocate for people with disabilities, families with their disabled children, D/deaf people and D/deaf with disabilities from 1983 to the present. I have been busy with the newly established Ministry of Disabled People (Whaikaha) in July 2022 via Waikato EGL (Enabling Good Lives) from 2013 to the present. New Zealand is the first time in the southern hemisphere to have a new Ministry of Disabled People in the Government.

Whaikaha: Ministry of Disabled People is a government ministry within New Zealand's Ministry of Social Development. Its mission is to improve outcomes for disabled people in New Zealand, reform the more comprehensive disability system, and coordinate the Government's disability policies. "The Ministry will lead and coordinate disability policy across Government, including improving outcomes for disabled people in areas such as employment, education, health and wellbeing. The new Ministry will be the first government department to have a name with all three languages. The New Zealand Sign Language (NZSL) name will be added in the future. Note the new CEO person is a disabled person.

I have been a member of the International Federation of the Deaf People for many years. Next month, we, D/deaf people and D/deaf with disabilities people, will raise awareness worldwide. The theme is 'Building Inclusive Communities for All', from the 19th to the 26th of September. Each day we bring a different topic:-

Monday:	Sign Languages in Education
Tuesday:	Sustainable economic opportunities for deaf people
Wednesday:	Health for All
Thursday:	Safeguarding deaf people in times of crisis
Friday:	Sign Languages Unite Us!
Saturday:	Intersectional Deaf Communities
Sunday:	Deaf Leadership for Tomorrow

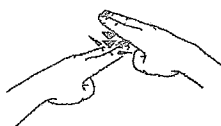
J E Masters/P B Sheargold
jjj3jeans@xtra.co.nz

Give these simple sign language words a go



mother

whaea, māmā



father

matua, pāpā



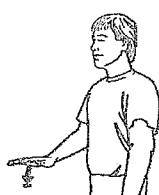
mum

whaea, māmā



dad

matua, pāpā



child

*e tamariki ana,
tamaiti*



children

tamariki



aunt

whaea kēkē, whaea



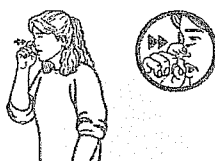
uncle

matua kēkē, pāpā



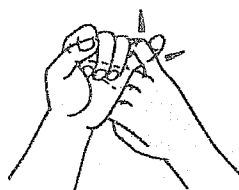
brother

*tuakana, teina,
tungāne*



sister

*tuakana, teina,
tuahine*



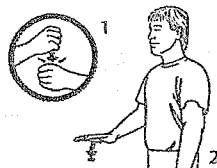
son

tama



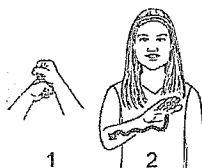
daughter

tamāhine



grandchild

mokopuna



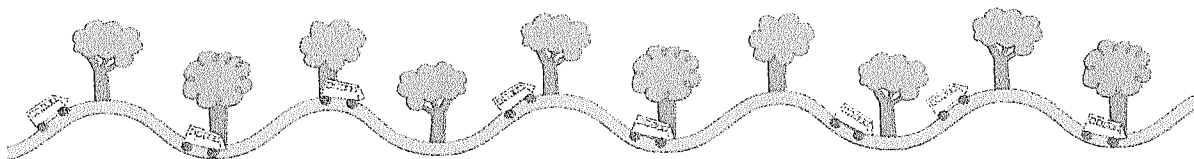
grandchildren

mokopuna



family

whānau



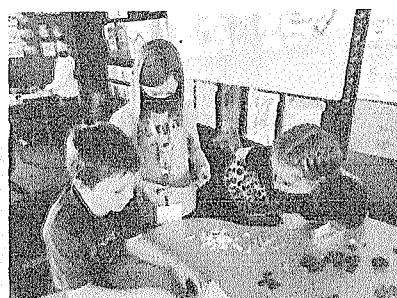
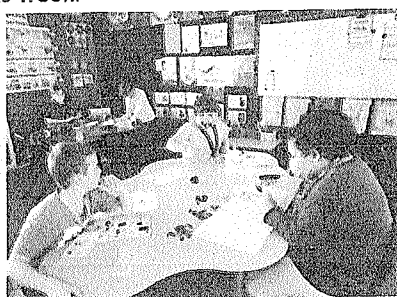
Motumaoho School

2101 State Highway 26, RD2 Morrinsville 3372 | office@motumaoho.school.nz | p. 07 8897597

Learning/Akoranga:

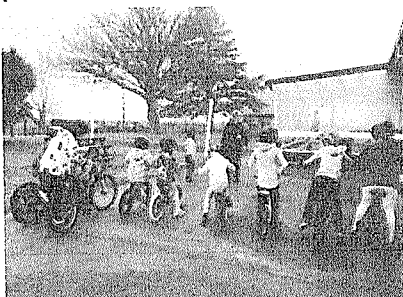
'Brick Club' - Using Lego for learning across the curriculum

Motumaoho School is starting Brick Club this term with all our students. This program is being implemented by Deidre and Sheree from our local RTLB service who already work with some of our students. The program focuses on developing problem solving strategies, leadership, collaboration and cooperation while building on literacy and math skills, etc. Our teachers are also learning how to implement this program. Room Tui has already started and Room Piwakawaka will start their journey this week.



Road Safety with Constable Tash

Last Monday, we were privileged to have Constable Tash come into our school and talk to Tui and Piwakawaka about the importance of Bike Safety and how to keep ourselves safe. We talked about how to wear our helmets correctly and how we need to keep to the left while riding. We were lucky to have the sun shining so we got to go outside and ride our bikes and practise what Constable Tash was explaining to us. All the students were then lucky enough to complete a 'question and answer' session with Constable Tash and we got to hold her vest and feel just how heavy it was. Thank you very much for coming to Motumaoho School Constable Tash!



Commonwealth Games

With our focus on the Commonwealth Games the students have learnt that:

- There are far more countries in the world to what they first thought
- New Zealand athletes have done us proud
- Our athletes use the values of Respect, Resilience, Responsibility and Service just like we do here at Motumaoho School
- Maths is used in sport e.g. times, distances, goals, speed, etc.

Motumaoho School

A little school with a big heart



A warm Motumaoho welcome

What we provide:

A rural school with small class sizes
A caring and inclusive environment
Kickstart programme for preschoolers
Large fully fenced grounds
Swimming pool
Bikes and a bike track



We look forward to meeting you!

Please contact us on 07 889 7597 or email: principal@motumaoho.school.nz
facebook.com/motumaoho.school - www.motumaoho.school.nz



Pukeko Preschool

AUGUST 2022

IMPORTANT DATES

GRANDPARENTS DAY

3RD OF AUGUST

DAFFODIL DAY

6TH OF AUGUST

DRESS UP IN YELLOW

We are on the lookout for.....

Vet weather clothing
Rain jackets
Anyone to help fix
some bikes.

Thank you to Joel
theo and Beau's
dad who made a
awesome outdoors
blackboard for the
umariki to use in
their play.

Kia Ora Whānau,

Thank you to all the parents that attended our AGM. We have a few changes to the board this year as we say goodbye to Emma Elliot, Kim Garland and Katherine Shepherd. It was fantastic to look back over the past year and celebrate everything that has been accomplished.

Our trust board for 2022/2023 are:

Lucy Harris

(Chairperson)

Brendon Woods (Treasurer)

Hayley Ferrier-Kerr (Secretary)

Shellie Moses

(Staff Liaison)

Emma will still be in background supporting Lucy with her new role and will continue to be the licensee.

Our Popcorn fundraiser went well we managed to sell \$971.78 worth giving us a profit of \$561.22

Thank you to everyone's outstanding efforts.

Tauwhare School have their annual Grandparents day coming up on Tuesday the 23rd of August. We welcome all Grandparents to come across to Pukeko Preschool to visit their mokopuna around I I am.

Pukeko Preschool

20 Scotsman Valley Road

Open 7.30-am 5.30 pm Mon-Fri

Under two's room

Over two's room

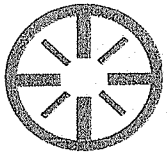


Aroha Nui Pukeko Team

Stephanie, Kim, Kat, Jo and Jo



Thank you for continuing to chose Pukeko Preschool for this part of your children's learning journey!



Bentley Home PC Support

Maps Vs Maps

The difference between a real map and a GPS system is, a real map shows you where you might go, a GPS tells you where you *will* go. For all the large advantages GPS systems (okay, let's call them digital maps cause that's what they are) give us, they are at best, perfectly functional taxis. You tell them where you want to go, and they take you there, albeit sometimes with a few side routes and U-turns thrown in.

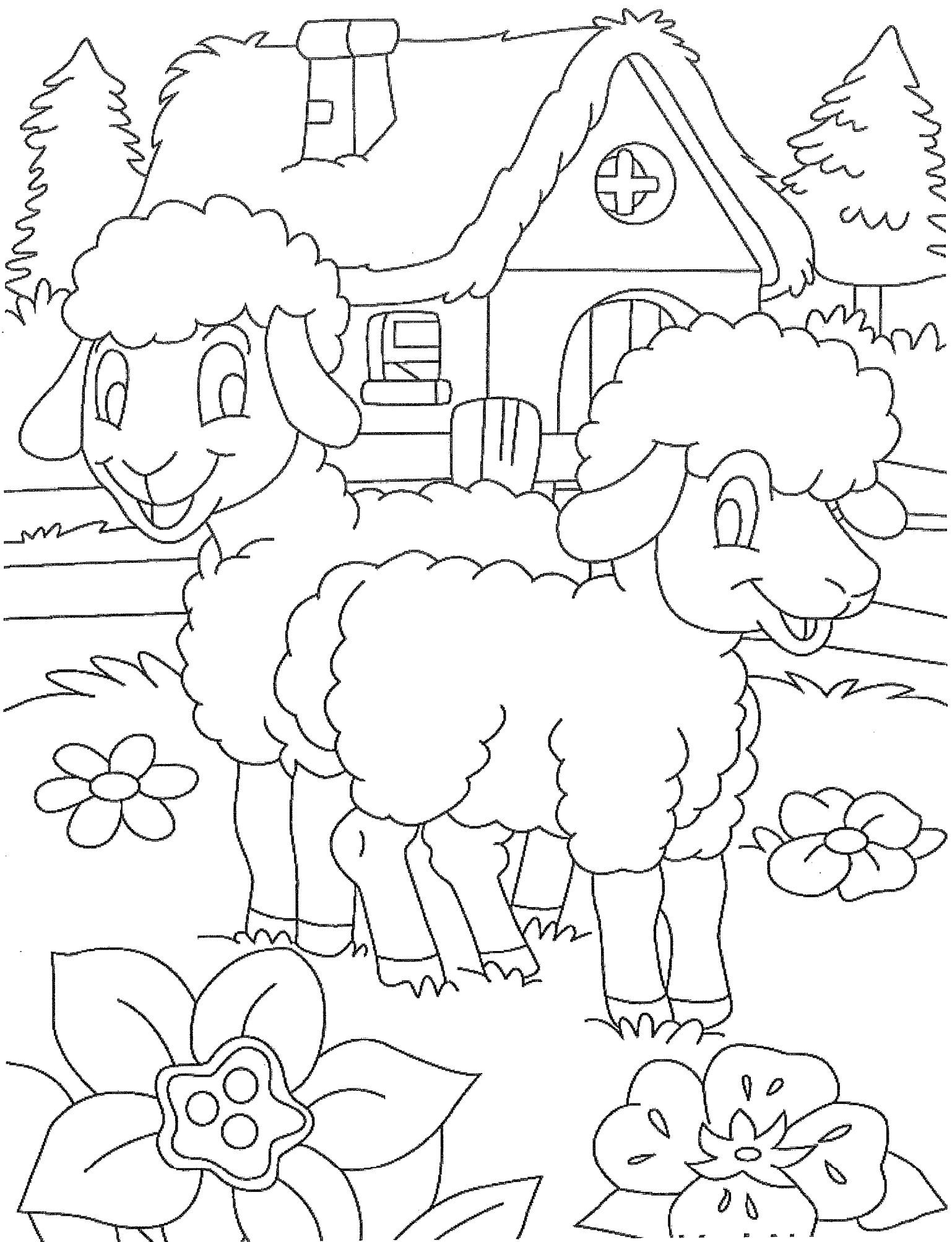
The accuracy of these systems have certainly improved; you hear less instances of tourists driving into the ocean because a digital map told them to, nowadays. But they're not infallible. Somewhat ironically what I miss most about real maps though, *is* getting lost. Just not in a "***glub glub*** now look there's a fish" kind of a way. I mean meandering off the beaten path, taking side-roads, finding places you never knew existed, simply because you ignored the straight and narrow.

Philosophically, you can say that a digital map on a large enough screen gives you the same advantages as a real-world map does, and that's true - to an extent. But the convenience and habituation with which we immediately swing toward telling the device to plot a course for us, is our undoing in this regard. By default, we let the machine tell us where to go. By default, we skip the scenic route in favour of the most logical course. We save petrol, probably, but there's a sense of exploration and discovery which is lost in this process. You're just a bullet in a chamber, funneling from one end to the other.

We can have it both ways, it just takes a little fortitude and mindfulness to break through these habits. Here's an exercise: the next time you're heading to a destination, have a little free time and don't mind the extra miles, take a look at a real map (or a digital one on a large enough screen). Pick a couple of side-roads to head down instead of taking the main course; maybe even a couple of dead-end roads for good measure. If nothing else, it'll break up the tedium of a normally thoroughly-predictable trip. You might even take in a sight or two.

The advantages of digital maps are manifold; petrol savings, traffic prediction and re-routing, as well as second-guessing your 'instincts' about where you should go. But over-reliance on technology always leads to fragility, and what're you going to do next time the grid is down? Pull out a real map, of course.

Lost? Phone Matt at 0211348576 or email: info@homepcsupport.co.nz
\$70 per hour, or \$60 for drop-off-to-workshop services.



Spring Flowers Word Search

YFCOHOKAGHYLECH
EELJICJWYXQPSAB
RHOIISZDLJWVORD
SSVGLORJNFULRNR
CHRYSANTHEMUMAE
PCGLNNCYNNDUNT
OWJGILASIRIN
PFEAMDMPISVAOE
PAYEGEOSDSL IYNV
YQVMNEYFORCHIDA
ZQRAYWVXFBAHRML
REWOLFNUALGXIU
TQRMWCAQFTDGOOU
CIMWYXNOKCIAPNV
JQAAUNWITHTUALDX

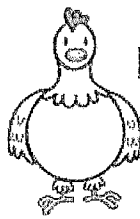
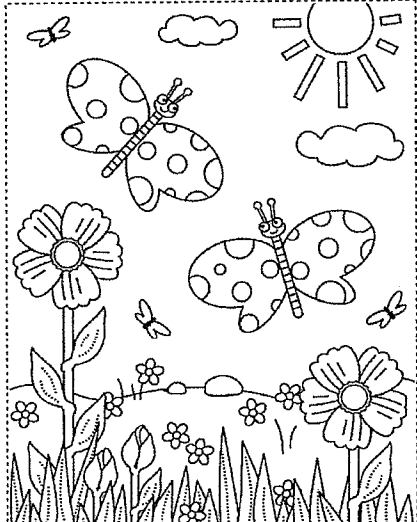
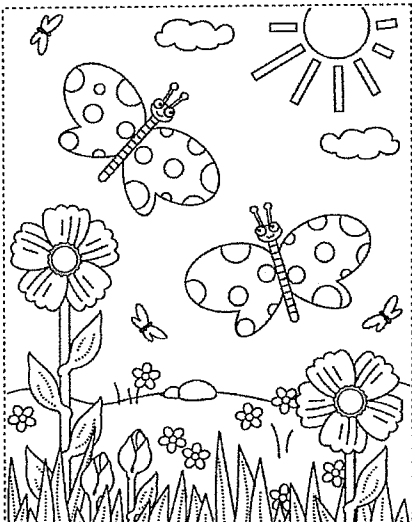
Anemone Daffodil Iris Lily Rose
Carnation Daisy Lavender Orchid Snapdragon
Chrysanthemum Hydrangea Lilac Poppy Sunflower

FLOWER WORD SCRAMBLE

pitlu _____
ydias _____
scrouc _____
moblo _____
wfrloe _____
llbbueel _____
ffddaol _____
soer _____
hoidrc _____
fsnuwrelo _____

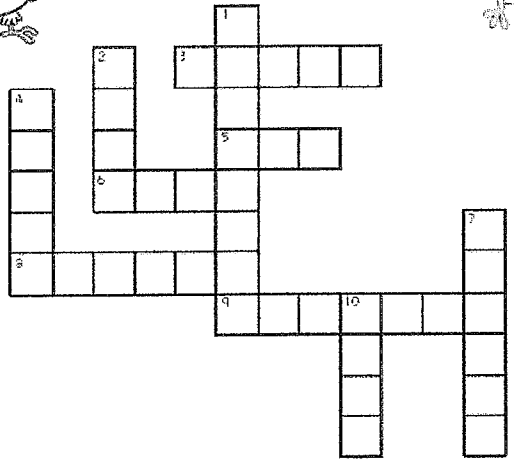
sunflower
orchid
rose
daffodil
bluebell
flower
bloom
crocus
daisy
tulip

Find the ten differences between the two pictures.



Farm Animal Babies

Crossword



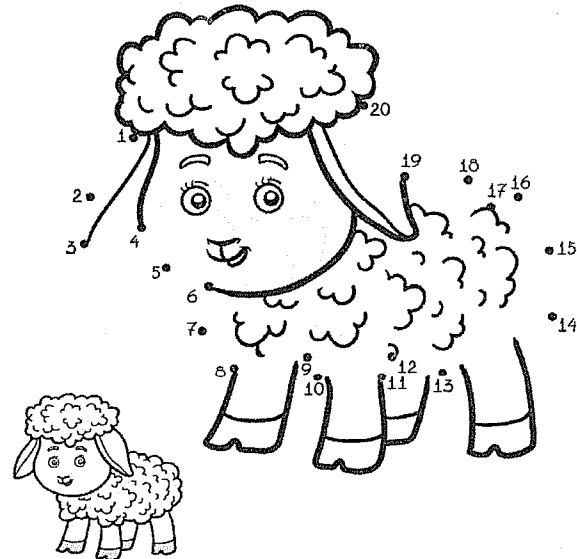
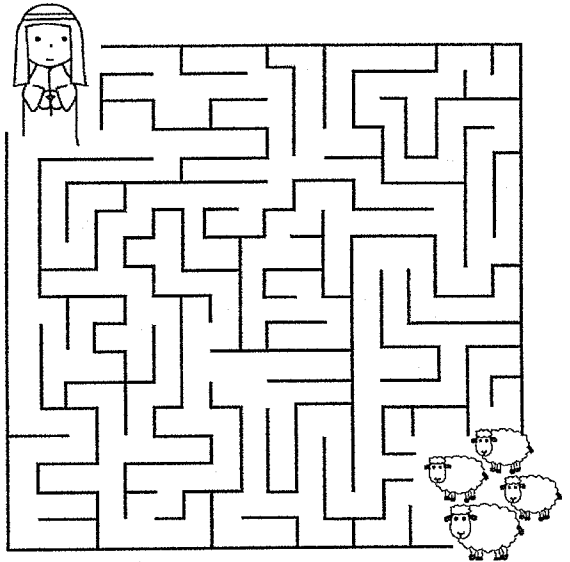
Across

- 3. a baby dog
- 5. a baby goat
- 6. a baby horse
- 8. a baby cat
- 9. a baby goose

Down

- 1. a baby duck
- 2. a baby cow
- 4. a baby hen
- 7. a baby pig
- 10. a baby sheep

Help the shepherd find his lost sheep.



CONTACT LIST 2022

Badminton – Junior	Bryce Silvester	824 0699
Bowls – Tauwhare	Bev Meads	8241 941
Eureka Express	Editor	editor@eurekaexpress.co.nz
	Treasurer – Glenys Middlemiss	8241 647 tres.eurekaexpress@gmail.com
Newstead School		8565 946
Tauwhare School		8240 864
Pukeko Preschool Tauwhare		8240 860
Tauwhare Playgroup		tauwhareplaygroup@gmail.com
Hall Bookings		eurekahallwaikato@gmail.com
Cubs & Scouts	0800 SCOUTS	0800 726 887
Newstead Veterinary Services	Small Animals	8564 522
Waikato District Councillor Eureka Ward	Rob McGuire	824 3696 0274 970 966 rob.mcguire@waidc.govt.nz
Drainage – Waikato Regional Council	Steve Edwards	021 941 080
R D 6	Mike Bai	021 045 8846
R D 7	Sophie Begman	021 268 5561
Justices of the Peace	Steve Wood	8241 018
	John Bridgman	8243 766

REPORTING POSSIBLE CRIMINAL ACTIVITY

The suburban Police Stations are now closed to the public so criminal activity should be reported by visiting the Hamilton Police Station in Bridge Street or by phoning them on 07 858 6200.

The following website explains the procedure in more detail –
<http://www.ns.org.nz/index/html/Factsheets/whentocall111>

105 (TEN-FIVE) INFORMATION

Use Ten Five (105) to report things that don't need urgent Police assistance.
 If you need to talk to us, call 105 from any mobile or landline. It's a free nationwide service available 24/7. If you can't get through to 105 please contact us online at
[www.police.govt.nz/use- 105](http://www.police.govt.nz/use-105).

editor@eurekaexpress.co.nz

For all your articles, advertisements, photos, ideas and suggestions please use the above email address. The Express is printed Feb – Nov each year. All articles should be sent to the Editor by the 24th of each month.

www.eurekaexpress.co.nz

Yes, we have a website and now you may also read and access our local history book, "*Eureka 1874 – 1984*" on this website.

LOCAL HISTORY

Copies of the 2004 "*School and District Jubilee*" booklet are readily available and are free. The booklet contains a synopsis of Eureka's history and development. Contact editor@eurekaexpress.co.nz for your copy. For a more detailed history please see above and read online.

GO BUS TIMETABLE

Leaves Morrinsville

Mon-Fri at 7:30am, 7:50am, 10:30am, 12 noon, 3:40pm, 4:00pm & 4:30pm

Allow approximately 10 minutes to reach Eureka.

Buses are scheduled to arrive in Hamilton approximately 20 minutes later.

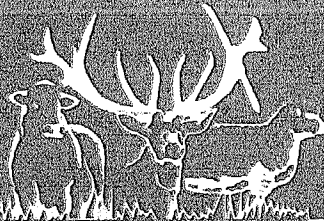
Leaves Hamilton

Mon-Fri at 6:45am, 9:00am, 1:00pm, 2:00pm, 3:30pm, 5:15pm & 5:40pm

Saturdays, Sundays and Public Holidays

- Dep. Hamilton 8:30am, 1:30pm, 5:30pm
- Dep. Morrinsville 9:10am, 2:15pm, 6:10pm

Fares with BusIT Card (available from driver or Transport Centre)



TAUWHARE HOME KILLS

TREVOR & LEONIE BRUNTON

1126 TAUWHARE ROAD

PH: 07 824 0880

Fx: 07 824 0809

thoughtfulHQ

Web Design & Development


- Professional Web Design & Development services.
- Web hosting & options for ongoing support.
- Fair prices & professional attitude.

Daniel: 022 078 0868 www.thoughtfulhq.com

 Follow thoughtfulHQ on facebook for project updates and practical business tips.


EUREKA POULTRY FARM

13 Hooper Road
Ph 824 1762
NIC & MARIA STOLWYK
Hobby Hens

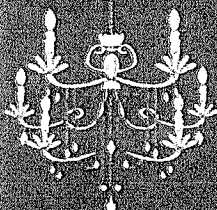


Young pullets from 5 weeks to point-of-lay
Great for lifestylers
Bagged up chook manure
Hours Mon-Sat 8-6

COMPUTERISED BULK SPREADERS LTD
Cartage & Spreading



FERTILIZER, LIME, UREA SPECIALISTS
Competitive Rates
PETER JONES
027 496 3370 07 887 4000
26 years service in the Morrinsville district



Rae Winter

Interiors on Hoeka

GIFTS - INTERIORS - KIDS

196 HOEKA ROAD, RD4
MATANGI, HAMILTON

FOR AN APPOINTMENT
CONTACT ME

029 886 6983
interiorsonhoek@gmail.com



safe water fast

Premium water tank cleaning and purification without the premium price tag

Resolve smells, bad tastes and contamination
No purchasing replacement water
No damage to inside of tanks
100% satisfaction guaranteed

Ministry of Health recommend annual servicing of your collection tanks
When were yours last cleaned?

Craig Nicholson 027 660 5329 0800 SAFE H2O
cjn@safeh2o.co.nz www.safeh2o.co.nz

The Kitchen Lady

For your design, manufacture and installation needs.
We come to you.



RENEE MOUAT
021 177 8695

www.thekitchenlady.nz

KITCHENS | VANITIES | LAUNDRIES | WARDROBES

Sam Ware
MARRIAGE CELEBRANT

021 897 706

sam@samwarecelebrant.co.nz
www.samwarecelebrant.co.nz



nzgarden sheds

the best little Sheds around!

Your local garden shed supplier of
NZ made, self assemble Garden Sheds
(Zincalume or Colour Steel)

GET IN TOUCH...

- * EASY ASSEMBLY
- * MADE TO LAST!

Waikato Shed Company

218 Hunter Road, Eureka,
Hamilton

Phone: 07 824 1045

Email: sales@nzgardensheds.co.nz

ENQUIRE FOR A BROCHURE NOW

**FRESH
APPLES & PEARS
STONEFRUIT IN SEASON**

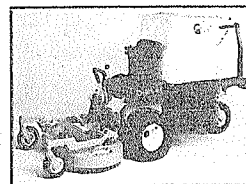


**NEWSTEAD ORCHARD
552 Morrinsville Road**

OPEN MON-SAT.
W J McMiken & Co
Morrinsville Road
Tel. 856 4478

**LAWNMOWING &
GARDENING SERVICES**

Professional lawn & garden-care service



Alex & Sharyn MacDonald

For free no-obligation quote:

Phone: 027 479 7282
or 027 308 6781

Email: macdonaldmowing@gmail.com
www.lawnandgardenservices.co.nz

Residential - Rural - Commercial Mowing
Spraying - Fertilizing - Weedeating



Servicing and installation on all types of pumps

Full water treatment service available

DAREN ROSS

Ph: 8241 726

or

0274 346 571

Email: admin@rosspumps.co.nz



meat the need

**NZ FARMERS,
FEEDING NZ FAMILIES**

**DO YOU WANT TO HELP
FEED NZ FAMILIES?**

A donation of just one cow will
provide over 650 meals in the
community.

Together as nz farmers we
can feed nz families.

Visit us at **meattheneed.org**
or call us on
0800 632884

HAIRFIELDS

HAIR DESIGN
95 HOOPER ROAD

Sharon Laurent

Full salon facility in Eureka
Total hair care professional
with many years experience
Agent for Nutrimetics also

Covid19 vaccine pass required

Open Tuesday to Thursday
Late nights Tues/Thurs

Tel. 824 1712 or 027 280 5978



161 Morrinsville Road, Hamilton, 3286
Phone: 07 856 4522 Fax: 07 856 9487 Email:
enquiries@newsteadvets.co.nz
Website: www.newsteadvets.co.nz

Newstead Vets offer a full range of veterinary services for small

animals including:

- Consultations (by appointment only)
- Soft Tissue and Orthopaedic Surgery
- Digital Radiography and Ultrasonography
- NZVA Microchipping Accredited Practice
- Nutrition and Product Advice
- Rural location with ample parking
- Referral to Specialists
- PennHIP Certified
- Full Laboratory Service
- Hospitalisation
- Cremation Service
- Convenient Online Shop

Dig It Earthworks

EARTHMOVING & EXCAVATION

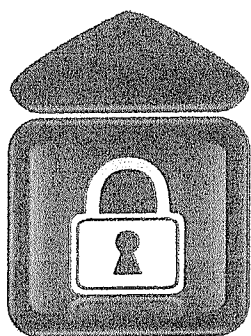
- House Pad & Driveway Prep
- Driveways
- Section clearing
- Footings & Post Hole Boring
- Landscaping & Lawns
- Farm Maintenance & Races
- Truck & Labour Hire
- Calf/Goat/Pig/Chicken Shed Clearing

CONCRETE LAYING

- House & Garage Pads
- Driveways
- Sheds/Workshops
- Patios
- Footpaths

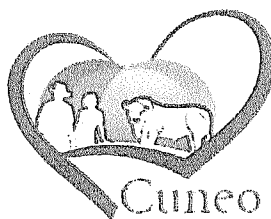


Give Liam a call today for a free quote on 021 02839174



Eureka Storage

Many options from 9m2 - 307m2
Short term + long term
Call me to discuss your requirements



Cuneo Piedmontese

HEART • HEALTHY • BEEF

Pedigree + Commercial
Purebreeds For Sale
Bulls, cows + yearlings

Don Knight 0274950535

117 Hooper Road, Eureka



Growing Together

**Maize, Grass
Silage & Hay
for Sale!**

Providing Professional Agricultural Contracting Services

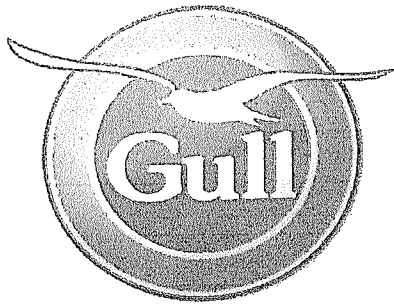


Services Include:

- Baling, Round, Big Square & Conventional
- Spraying
- Grass Silage - Chopper & Loader wagons
- Maize Silage - Cultivations, Planting & Harvesting
- Bulk & Hiab Cartage

Call Jeremy Rothery for inquiries or bookings 027 526 2441

www.jclag.co.nz



GULL EUREKA

PETROL – DIESEL – LPG - OILS & LUBRICANTS

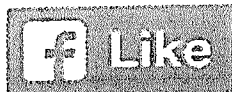
FARM SUPPLIES – GROCERY ITEMS

SHOP HOURS: MONDAY TO FRIDAY 7:30AM – 6:00PM
SATURDAY 8.00AM – 12.00PM

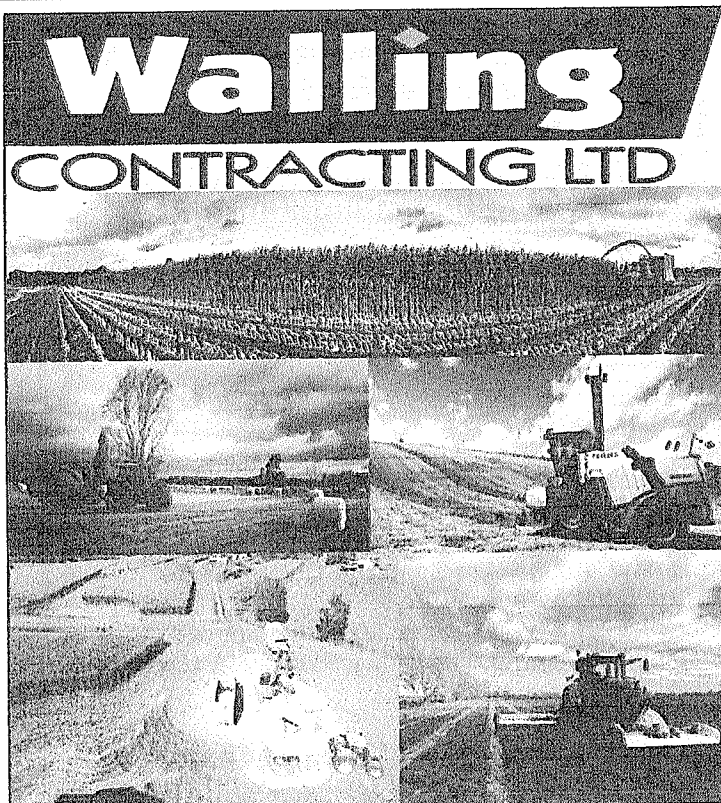
**AND NOW: FUEL 24 X 7 PETROL & DIESEL FROM OPT (OUTDOOR
PAYMENT TERMINAL)**

EFTPOS – RD1 FARM SOURCE – FARMLANDS – CARDLINK

AMEX – MASTERCARD – VISA



us on Facebook for discount day and promotional information



For all your:

- . Ground Cultivation
- . Planting
- . Re-Grassing
- . Under Sowing
- . Grass Silage
- . Maize Silage
- . Digger &
- . Spray Requirements

Ph: 07 824 0894

Rebecca: 027 493 4476

Email:

walling.contracting.ltd@gmail.com



Local Company based at Eureka

Our sheds are all made from NZ Steel and certified NZ made so by purchasing from us you are supporting more than one New Zealand Business

Lifestyle
Rural
Industrial
Habitable
Sleepout

Waikato Shed Company

218 Hunter Road

Eureka

07 824 1045

Enquiries@waikatosheds.co.nz

www.waikatosheds.co.nz

WAIKATO SHED C O M P A N Y ✓✓

great sheds, done right!

Sleek Shed House

Work from home made easy with this two story habitable shed and enormous workshop, designed with room for the whole family.

This Gable shed is 490sqm, 11° pitch roof with Ten Skylights in the workshop to let the natural light through and to finish it off a canopy over the roller doors.

We did the external frame and the owners did a great job of their own internal fitout.



Waikato Sheds making dreams come true



Local Company based at Eureka

Our sheds are all made from NZ Steel and certified NZ made so by purchasing from us you are supporting more than one New Zealand Business

Lifestyle
Rural
Industrial
Habitable
Sleepout

No Bull Sheds

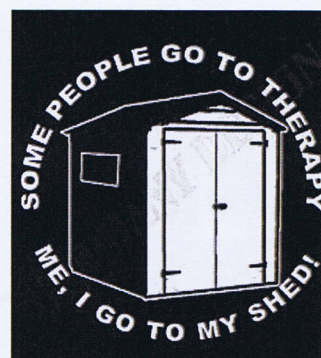
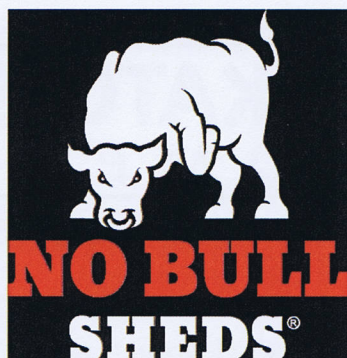
218 Hunter Road

Eureka

07 824 1045

Enquiries@nobullsheds.co.nz

www.nobullsheds.co.nz



Hunter Road

Inside is starting to take shape, thanks City Glass.

