

# Eureka Express

Vol XLII No. 6 Circ 315

July 2021

[www.eurekaexpress.co.nz](http://www.eurekaexpress.co.nz)

[editor@eurekaexpress.co.nz](mailto:editor@eurekaexpress.co.nz)

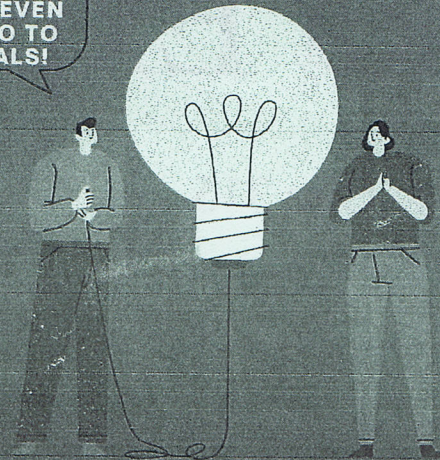


Friday 23 July to Sunday 8 August 2021



# NOTICES

HELP THE  
HILLCREST HIGH  
FIRST ELEVEN  
GIRLS GO TO  
NATIONALS!



## QUIZ NIGHT

FORM GROUPS OF 4-8 AND BATTLE IT OUT!

Wednesday, August 11th

Doors open at 6:00 pm, questions start at 7:00 pm.

Speights Ale House

30 Liverpool Street, Whitiara, Hamilton 3204

ENTRY COST: \$20 PER PERSON

TO BOOK A TABLE EMAIL: [HAYKAREN@YAHOO.COM](mailto:HAYKAREN@YAHOO.COM)

## MARKET DAY

SUNDAY 14TH NOVEMBER

9AM—1PM

EUREKA HALL, CNR HUNTER RD & SH26, EUREKA

• New and second hand  
items

• Eftpos available at some  
stalls

• Handmade / homemade  
goods

• Refreshments for sale

Hire a stall for \$15 to sell your items. Contact Kim  
Garland on 0277651020 for more information.

A FUNDRAISER FOR  
**Pukeko  
Preschool**



# EDITORIAL

We purchased our Eureka home from Mark & Heather when they decided to move on from Hinton Road and when we arranged a settlement date of Friday the 27th of March 2020, at the auction in November 2019, little did we know how Covid-19 would affect the whole world and little old New Zealand but it has.

Midnight Wednesday the 25th March 2020 New Zealand moved into Level 4 lock-down so in a mad rush and scramble with banks, lawyers and movers we left Silverdale. At 9:30pm on that same night we had actually moved in, 48 hours early and knackered.

What we discovered four weeks later, when we were all allowed out again, was that the Hinton Road whanau were a great bunch of people, all welcoming, engaging and curious about their new neighbours. Over a couple of drinks, stories were exchanged and we settled into our new life at Eureka. Thanks especially to Luke, Katie, Dinah & Una @ 89 who made themselves known on that Wednesday night. Also to Sonya who helped Karen extract a beefy out of the garden.

We haven't move far in distance but we have moved miles in life style. Carrington Ave, in Silverdale, was a reasonably quiet eastern end of Hamilton 17 years ago when we purchased, but over the last 7 years when the high density rules were relaxed it rapidly became filled with University accommodation, cars lining both sides of the street (and the odd driveway), when the varsity started charging for parking.

We had owned the lovely character house, that was the original homestead built on Captain Steel's war farm allotment. The house was 106 years old when it was cut in half and trucked over the Kaimais to its new location in Te Puna. The new owners have done a wonderful job in restoring the old girl back into a fabulous family home, similar to what she would of originally been when built post WW1.

Last New Year's Eve we had a small "Street party" on the large grass verge outside of 89a Hinton so this year we hope to see more neighbours and anyone else in this great little community, so put it in your diaries and come join us if – if we are allowed to mingle of course.

***Simon & Karen***



# COMMUNITY NOTICES

FYI

## MAJOR ROAD CLOSURES COMING TO RUAKURA ROAD (FROM WAIKATO TIMES 28 JULY 2021)

Hamilton City Council is urging motorists to plan ahead and prepare for delays as construction work ramps up on the Ruakura Road upgrade project. Road closures between Wairere Drive and Silverdale Road – done in a staged approach – will be in place from early August for three months. The upgrade will provide a critical link to the Hamilton section of the Waikato Expressway. Detours will be signposted, and the team on the ground will work to keep access open for pedestrians and people on bikes along Ruakura Road, however detours may be in place at times. Emergency service vehicles will have access through the site, meanwhile diversions will be in place for Orbiter buses and people can visit [busit.co.nz](http://busit.co.nz) for more information. Once complete, the upgrade will include traffic-lights at the intersections of Ruakura Lane/Ruakura Road and Ruakura Road/Knighton Road as well as shared paths and dedicated cycleways for people to enjoy.

## NEIGHBOURHOOD WATCH

A red Toyota Hatchback car was seen on Eureka Road on Wednesday this week acting suspiciously. It took off quickly when a resident called out to the occupants. Keep an eye out for anything you think may be suspicious in the neighbourhood and report it. Nobody wants to be a victim of crime!



## MARKETPLACE

### FOR SALE:

**FIREWOOD.** Phone Jake 0220277486

**AGM      AGM      AGM**

The Annual General Meeting of the  
**EUREKA HALL COMMITTEE**

Will be held Tuesday 17 August

At 7.15 pm at the Eureka Hall



## HALL UPDATE

The shortest day has been and gone, and July is all but over. We are very quickly heading towards spring, and wait for it, Christmas. What a scary thought.

On Friday 16<sup>th</sup> July a Movie night was organised and held at the hall. It was a lot of fun for the few people who attended. The low number of people attending was very disappointing. A lot of time and effort was put in to organising this event for the community. A big thank you Alison Taylor and her family for organising the event and ensuring it was enjoyed by everyone who did attend.

The AGM for the hall committee is on Tuesday 17<sup>th</sup> August at 7.30pm, and will be held at the hall. It would lovely to see new faces.

Bookings for the hall are coming in slowly, but there are still plenty of dates available to book an event, so if you would like to book a function, contact Gail Mayall 8241758.

We will still maintain the Covid scanning and hand sanitiser regulation in the hall, and we encourage anyone using the hall, to please comply.

That is it for this month, be safe and happy.

Hall contacts

Gayle Orr Chairperson 0272917150      Gail Mayall Secretary      078241758

Usage	Residents	Non - Residents
Meeting Supper room per day	\$ 25	\$ 50
Hall per day	\$ 50	\$100
Social function	\$150	\$250
Weddings & Dance	\$300	\$500
Children's party	\$30	\$ 30
Bond	\$400 Secretary's Discretion	\$500 Secretary's discretion

## WEATHER

Weather for June 2021		
Rainfall total	113mm	
Rain Total for year	423mm	
Rainy days	12	
Most daily rainfall	22.5mm	14 <sup>th</sup> June
Highest wind speed	38.5 km/hr	
Temp high	18.9 C	10 <sup>th</sup> June
Temp low	-2.1 C	24 <sup>th</sup> June





# RESHAPING WAIKATO DISTRICT

by Sue Edmonds

I am not aware of how many Eureka residents now receive Waikato District News on line. In the last issue (22 July) there was an article entitled Council Adopts Initial Proposal of the Representation Review for Public Consultation. If you didn't receive it, go to <https://shape.waikatodistrict.govt.nz/reshape-waikato>.

As the long time Chair of the Eureka Community Planning Committee I was appalled to read that the Eureka Ward is being dropped, and the so-called 'rural' area will become part of an enormous Waerenga-Hukanui General Ward, which stretches from the Thames Coast with us as the most southern part.

While it is proposed that this ward will have two Councillors, those selected will either spend a lot of time driving about, or Eureka residents will find that when problems arise locally, it will be much more difficult to get one of them to come and provide an authoritative view. We have been fortunate in our present Councillor Rob McGuire, who willingly attends trouble spots and attends our various meetings.

Eureka has already had to fight the Council for access to more local facilities (Hamilton) for public library membership. And the southern regions have worked well together in running the Heritage Committee for Tamahere, Tauwhare, Matangi, Eureka and Gordonton. These areas would now be split into two districts with much less in common.

I recommend you study the maps provided with the District News Article and on the website. It is proposed to create a Tamahere/Newcastle General Ward which will stretch in a horseshoe shape around the northern boundary of Hamilton, with the Council assuming that people in those areas will use Hamilton facilities. However, Eureka residents are regarded as 'rural', despite being closer to Hamilton than Ngaruawahia.

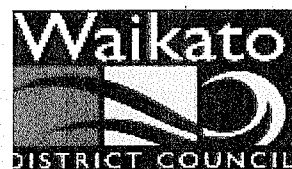
Yes, there is now a Council office in Tamahere, but our representation won't be there.

If, when you have studied the maps and article, you feel that people in Eureka should get together to discuss the proposal, I would be happy to convene a meeting at the Hall to allow us to do so. I have booked the Hall for a 7pm meeting on Friday 6 August. I would also be happy to then write a submission to the Council which reflects a multiple viewpoint.

We haven't got much time (the submissions close on 20 August), so please either email me about coming to the meeting (email: [sueedmonds424@gmail.com](mailto:sueedmonds424@gmail.com)) or telephone me (824 1944).

Even if, at this point, you have no strong feelings about the Council proposal, please come to the meeting and find out more about the implications on the way you interact with WDC and our closer surrounding areas.

Sue Edmonds





## FOR EUREKA EXPRESS

Groundswell Supporters of Local farmers, tradies, contractors and associated industries turned out in hundreds at the Morrinsville rally to send a message to the Labour Government that enough is enough.

It's past the time to show respect to these communities for the efforts that are made to provide great food to fellow New Zealanders and show respect for the overseas income these combined communities bring into our Country.

Organisers Lloyd Downing & Peter Buckley were delighted with the overall support from across the community and indeed from across New Zealand. Thus, demonstrating that this Government is out of touch.

A great presentation from Andrew McGiven spelled out the Groundswell New Zealand message.

·Unworkable freshwater regulations. We have some of the most pristine water and landscapes in the world, and while we agree that we can always improve, we also think that we are damn good.

Those politicians and bureaucrats from Auckland and Wellington should look at their own back yards. We don't have to close 40 odd beaches during the summer due to sewerage issues, and if the city rate payers were held to the same standard as a farmer then their rates would be sky-high.

·They are attempting a modern-day land grab under the guise of Significant Natural Areas and the National Policy of Indigenous Biodiversity that punishes landowners who have been proactive in conservation. Taking property rights from landowners and offering no compensation. It's the equivalent of sectioning off the kitchen in a town house but still insist that full rates must be paid. Let's see them do that and we would all hear the screams.

To James Shaw. It's not just a few Pakeha farmers from down south who oppose you on this. It's Maori farmers, it's Indian farmers, it's Phillipino farmers, it's Chinese farmers. We are all farmers. We are the people of the land. We are all Tangata Whenua.

· Over the top, one size fits all state control. We are a diverse nation with diverse needs. The current governments approach is failing us all as a people

· No respect for people, their privacy and property information, need we say more, enough is enough.

· Overseas corporates buying up New Zealand farmland to offset emissions. Climate change is a global problem, and if we completely destabilize the world's most efficient food production chain, it will just move overseas to a less efficient country and make the global problem worse.

· Taxes on essential work vehicles, the EV Feebate being forced on us all when there is no alternative electric vehicle for farmers or tradies and are essential to our industries. Another tax on our productive sector.

Who drove their Ute or tractor here today? I hope it was for a legitimate use and were you masculine enough to drive it? Here's a message to Julie Ann Genter.... Rural women need Utes too.

· Out of control costs crippling small business.



· Unprecedented mental strain on people. Instead of spending \$700 million on a harbour cycleway, and giving \$240 million to the Mongrel Mob, invest it into the Gumboot Friday campaign by Mike King, grow the number of beds in Starship Hospital and pay our nurses and Police officers a better wage.

Who here knows someone who has committed or attempted suicide? It's a very real thing.

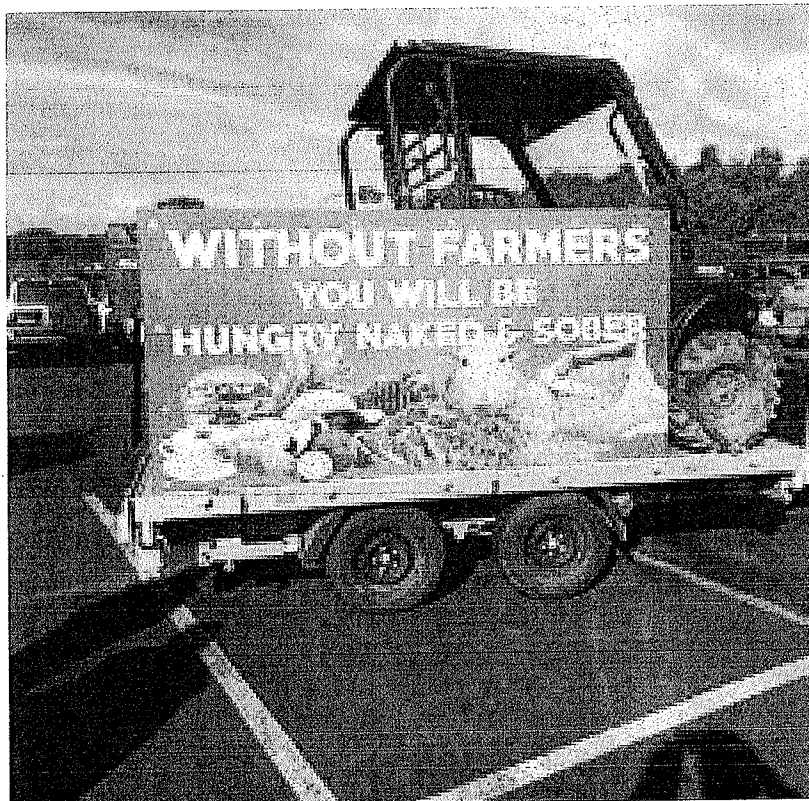
Groundswell NZ has put a stake in the ground and said enough is enough.

Groundswell NZ are calling for a halt to all environmental regulations including Freshwater, Indigenous Biodiversity/SNAs, Climate Change, High Country legislation and remove the Ute tax.

People, tractors & Utes by the hundreds filled the street at the meeting point in front of the 'Big Cow' outside Maber Motors. The Maber Motors sponsored BBQ and a friendly gesture from New World supplying platters of sausage rolls were very much appreciated, all adding to the community upswelling of support.

An encouraging result of these nationwide rallies was indicated in the TV3 poll that showed a whopping 85% supported the sentiments expressed, indicating that both rural & urban New Zealanders are fairly well aligned.

We are all New Zealanders. We are a team of 5 million. We are in this together and expect better from the Government.





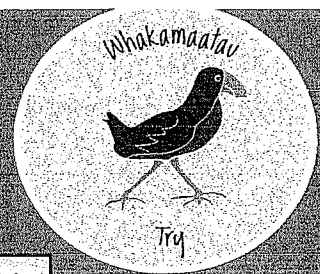
## **FOSTER HOPE PYJAMA DRIVE**

Thank you very much for all the support for the Pyjama Drive for Foster Hope Waikato/NZ. We collected 73 pairs of new PJ's for these very deserving children in foster care. For many of these children, these will be the first pair of new pyjamas they have ever had. What a wonderful gift we have given them this winter ♡♡



# Tauwhare School

RD7 Hamilton 3287 New Zealand  
 e admin@tauwhare.school.nz  
 t 07 824 0864



Accomplished Learners Striving for Success in Tomorrow's World



**Matariki** is a time to gather with family and friends to reflect on the past, celebrate the present, and plan for the future. What better way than to come together for kai. What fun we had at our breakfast one Friday morning. Miss Rodger and Mrs C scrambled 140 eggs to serve with the baked beans, sausages, muffins, fruit and buns. A veritable feast! Thank you to those brave parents who came and joined in on a rather miserable, cold morning!!!



### The Seven Kites of Matariki

Each class created their own matariki kite. Each one is unique and, as always, it was the learning that went into each creation which was the most valuable part. The children created their kites using paper, fabric, bamboo, weaving, plaiting and prints. Our harakeke kite is still to be completed as we could not cut the flax while it was wet.



Year 5/6



Year 4/5



Year 3



Year 2



Year 1



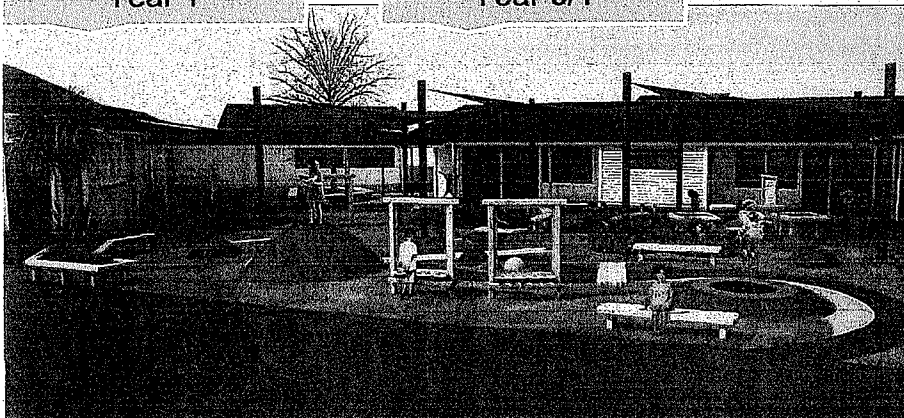
Year 0/1

### PTA FUNDRAISING

Thanks to the hard mahi by our Ravensdown helpers we can add \$6500 to the PTA's fundraising account!

Our major project this year is the resurfacing of the courtyard area outside Rooms 5, 6, & 7.

This project is expected to cost around \$100,000 which we are confident of achieving with by using our SIP grant for property upgrades, and with the help of the PTA.



JOIN US FOR TAUWHARE SCHOOLS PTA  
 big annual  
**Quiz Night**  
 SATURDAY  
 11TH  
 SEPTEMBER



6-8 MEMBERS PER TEAM  
 · TAUWHARE HALL  
 DOORS OPEN @ 7PM  
 CASH BAR ONLY  
 ENTRY FEE \$20 per team member  
 REGISTER: pta@tauwhare.school.nz  
 by 3rd September  
 \$100 WILL BE CONTRIBUTED TO THE PTA CLUB MASTERS



# Pukeko Preschool

SUNDAY 14TH NOVEMBER

9AM—1PM

EUREKA HALL, CNR HUNTER RD & SH26, EUREKA

New and second hand items

Effpos available at some stalls

Handmade /homemade goods

Refreshments for sale

Bring your items to sell your items. Contact Kim Garland on 0277651020 for more information.



JULY 2021

NEWSLETTER

## IMPORTANT DATES

Tuesday the 10th of August AGM

Wednesday the 1st of September Step In

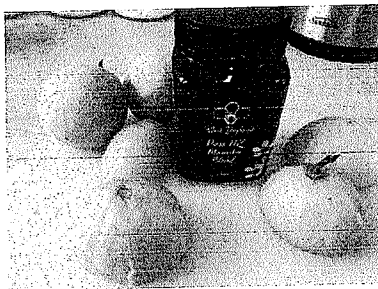
Sunday the 14th of November Market Day

Kia ora and Welcome to our July Newsletter!

Welcome to term three, we hope you all had a holiday of some kind and are ready for all our fun adventures this term.

The amazing fundraising committee has been hard at work planning future fundraising events. Starting on the **26th of August till the 13th of September we will be selling Black Shepherd Apiaries**. This is a family owned business based in Cambridge which has been operating since 2018. All of the Honey is locally produced and harvested by my lovely friend Robyn and her husband Ben.

For every jar purchased we get 40% profit which will be a huge help towards more resources for our centre. So lets get selling, with the winters germs out there we can all do with a bit of Manuka Honey in our life's. Let's boost those immune systems.



**Sunday the 14th of November we will having a market day at the Eureka Hall 9am 1pm.**

Tables can be hired for \$15, help support small business. Donations towards raffles, baked goods would be ever so appreciated as we dig deep for our small community centre. Have a look at our Facebook page for more details.

Pukeko Preschools **Annual General Meeting will be held on Tuesday the 10th of August at 7pm at the Centre.**

We are looking for more Trust Board members if this is something that may interest you please come along and help us further develop this beautiful rural centre.

Our community might be small but it is mighty – as evidenced in the amazing job done so far putting our preschool together.

We will be hosting an art exhibition the night of the AGM so come along see the aroha that drives us to teach in this sector. Nibbles and drinks will be provided, if you could let us no for numbers that would be great.

We have lots of spaces available in our overs room, as many of our friends head off to Tauwhare School this year. At present we have a waitlist for our udder's room. Feel free to come down look around meet the team. We are open from 7.30-5.30, with the option of booking from 8.45-2.45 perfect for those busy families who just need school hours.

Aroha Nui

Pukeko Preschool Team  
20 Scotsman Valley Road  
Tauwhare

RD 7 Hamilton 3287  
07 824 0860

Puke-  
kopreschool@xtra.co.nz



# TAUWHARE INDOOR BOWLING CLUB

Welcome to July's club newsletter.

We are now getting well through the bowling season for this year.

Our numbers on a club night are relatively stable at about 10 to 12 each night.

Although our numbers are definitely down on last year the evenings are always very enjoyable.

The men's and ladies singles were played recently and the ladies winner was Karen McNally and the men's winner was Kevin Williams.

We held our family night last week and it was a lot of fun. Not too much chaos. All the children that came along seemed to enjoy themselves. There was some very good bowls played by some of the children.

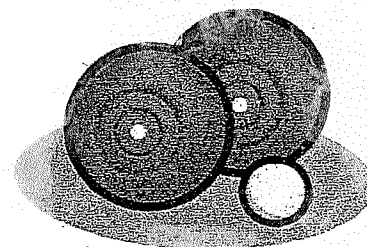
Most of the club attended our mid winter dinner which was held at Onyx in Cambridge. A very enjoyable evening and it is always good to have a social get together away from bowls.

We are always looking for junior players so if you are keen, then come along and of course bring mum and/or dad with you. It is never too late in the season if you want to come along on a Thursday evening and have a go at Indoor Bowls.

If you have not played bowls before but would love to give it a go then come to the Tauwhare hall on a Thursday evening. There is always someone from the club there that can show you what to do. We start at 7.30pm but names need to be in by 7.25pm. We are a friendly, sociable club and will always make people feel welcome.

This is what is on our programme till the end of August:-

22 <sup>nd</sup> July	Club Night
29 <sup>th</sup> July	Open Triples Tournament
05 <sup>th</sup> August	Sattrup Trophy
12 <sup>th</sup> August	Club Night
19 <sup>th</sup> August	Esme Pope Memorial – Handicap Singles
26 <sup>th</sup> August	Final Points Night
30 <sup>th</sup> August	Monday – Visit to Tamahere



If you would like more information then do not hesitate to contact one of the following people:-

Kevin Williams	07 824 0728
Jim and Rosalie Arnold	07 887 4832
Bev Meads	021 172 7822



# TAUWHARE PLAYGROUP

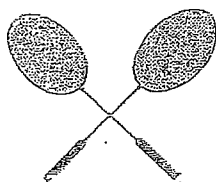
Tauwhare Playgroup meets at Tauwhare School on Thursday mornings (term time) from 9-12. We welcome families to drop in anytime during the morning between school drop offs and nap times.

Our playgroup is FREE to attend.

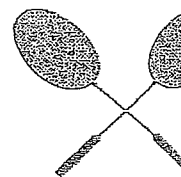
Tauwhare playgroup is a place where parents, grandparents and caregivers can meet other local families, make new friends, and share experiences while children and babies have fun and learn through play.

All ages are welcome.

Join our Facebook page Tauwhare Playgroup to see what we are up to this term.



## EUREKA BADMINTON CLUB



### JUNIOR BADMINTON

Junior Badminton is underway for the season

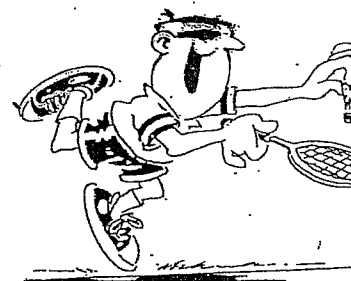
Wednesday nights 6 – 7.30 pm

at Matangi Hall 6 – 7.30 pm

New players always welcome

Racquets available

For Further Information please phone Bryce on 8240699



#### ADVERTISING RATES

Classified Adverts Free

Small Business Adverts	\$10 /month
- x 10 insertions	\$80 /year
One Third Page Adverts	\$15 /month
- x 10 insertions	\$120 / year
One Half Page Adverts	\$20 / month
- x 10 insertions	\$160 /year

#### CONTACTS

Gail Mayall (Editor)  
70 Eureka Road  
Ph: 07 824 1758 or 021 211 3348  
Email: editor@eurekaexpress.co.nz

Glenys Middlemiss (Treasurer)  
Ph: 07 824 1647  
Email: tres.eurekaexpress@gmail.com

# KOOKING WITH KAZZA

## COFFEE DELIGHT

50g butter 1 ½ cups rolled oats 1 cup wholemeal flour 1 tbsp coffee essence  
1/2 can condensed milk 1 cup brown sugar 1/2 cup flour 1 tsp vanilla essence  
1 heaped tbsp golden syrup ½ cup coconut 1 tsp baking powder 150g butter  
1/2 teaspoon vanilla essence 1 egg 1 tsp baking soda

Put 50g butter, condensed milk and golden syrup in pot and melt gently together.  
Stir in vanilla and leave to cool.

Combine flours, baking powder, baking soda, oats, brown sugar and coconut in a bowl.  
Lightly beat egg, coffee essence and 1 tsp vanilla.

Melt 150g butter and add to dry ingredients with the egg mixture and mix well.

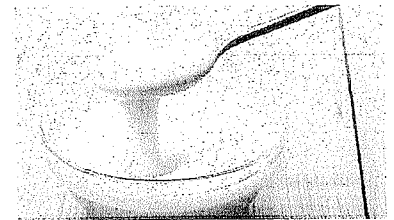
Spread ¾ of oat mixture onto base of shallow 20cm round cake tin.

Spread cooled mixture on top. Spread over remaining oat mixture.

Press down lightly. Bake at 180 for about 30 minutes.

Leave to cool.

Cut into wedges to serve. Can ice with coffee icing.



## ONE PAN MINCE

500g mince 1 pkt Maggi chicken noodle soup  
1 large onion chopped ½ green pepper sliced  
2 tsps curry powder 1 stick celery sliced  
½ cup rice 2 cups water  
½ small cabbage shredded Salt to taste  
1 large carrot grated

Cook onion. Add mince and brown. Add curry powder and cook a couple of minutes. Add all remaining ingredients apart from cabbage. Bring to the boil, then reduce heat to simmering for 25 minutes. Stir through cabbage and cook a further 10 minutes. Stir occasionally and add more water if necessary.

Serve with pita bread





## HUMBLE LITTLE GARDEN ON A PLATE – AUGUST

### *Getting the New Season Potato underway.*

Despite how you like to pronounce the word 'Potato', or if you like use an accent when saying the word 'Potato' (like some 'Leen' decedents I know, that have it their life mission never to say this word in a kiwi accent!???) Despite any of these, I'm sure many of you would agree nothing beats that pot of sweet new season potatoes at Christmas time (Yes, I indeed just used that C word!) and Yes again now is the time to start!

Here at 1151; we absolutely love our Christmas 'Tatties' that have been freshly dug from our humble little garden, cooked with a handful of mint, and drowned in salted butter, served with or without a plate.

One of the reasons why the humble little 'potato' is enriched in so many of our cultures is due to its resilience. Potatoes are considered to be easily grown can be grown, even in poor growing conditions. They are that well liked, that back in 1995 the humble potato was even grown in space! With this proven survival record potatoes are a perfect addition to any family garden, and you will not regret allocating some space to grow your very own Christmas potatoes this year.

There are many varieties to choose from, however if you would like to enjoy that pot of 'Tatties' at Christmas choose an early crop variety. Seed potatoes are currently available at the moment but are becoming limited. Some early crop varieties to look for are; Cliff Kidney, Jersey Benne, and Rocket.

Once you have made that decision of where you will be planting those Christmas treats this year and ensured your soil is good to go, a crop of potatoes can be easy care. When choosing the location, try to locate a spot with great airflow, full sun, good drainage and a good crumbly damp soil will produce well. Ensure there is a water supply that is easy to access over the drier months ahead.

Use some frost cloth to ensure the seed potatoes are protected from any late frost if you are aiming for the early crops. A copper spray can be used each fortnight to protect your crop from blight and pest, however if you are like us by using the equation of great airflow, full sun, good drainage this is a great place to start also take a look at the way your seed potatoes are prepared which can also help prevent issues later on.

The general way to get your seed potatoes underway is to place in a bag or tray in a cool dark dry place and wait for sprouts; however to help create a barrier to pest place the seed potatoes in a warm, sunny spot. The warmth will encourage sprouting, and exposure to sunlight makes the skins turn green and bitter. This makes them less appetising to any bugs and insects that may be tempted.

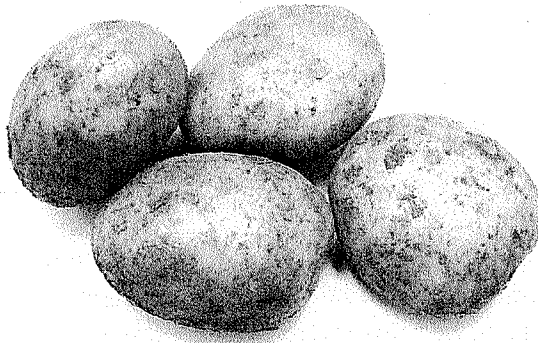
Seed potatoes can be planted whole or one to two days before planting the potatoes any that are larger than a golf ball can be cut smaller. Cut the sprouting potatoes into pieces that have at least three puckered "sprouts/eyes". Allow the cut pieces to dry. If the cut pieces turn black this is actually good. The darkened, dry surface helps prevents rotting. Once the seed potatoes have a sprout approximately 3-4cm long, these little gems are ready to roll out into your garden.

As mentioned for better results choose a sunny position in well-drained soil for growing your crop of potatoes. The soil wants to be as crumbly as possible, so you will need to dig the soil over and then use the fork to break the soil up to create the desired result. Composting is great to use in this instance, however a compost with lots of manure is not recommended.

Once the soil is levelled create your rows, and furrows. These should be approx. 15cm deep and 75cm apart from each other. Place the seed potatoes into the trenches 30-40cm apart and cover lightly with the soil. The soil just needs to cover the seed potato, and preferably covered in damp soil. If you need to moisten the soil at this point give it a light sprinkling as you want to avoid flood like conditions. As the shoots begin to appear over time, mound additional soil around the base of the shoots keeping in mind that crumbly, damp soil is best. Avoid dumping the soil on top of each bunch of shoots even though there may be the natural instinct to do so! Leave the leaves to be protruding is another way to increase yield and ensuring the soil is gently placed helps keep it crumbly or fluffy.

Mounding of the shoots can be done between 2- 6 times throughout the growing period and just remember 'crumbly, gently, damp' in addition try to keep the space free from weeds. Eventually these patches of shoots will flower and it's at this point you are now the lucky owner of some seriously delicious potatoes!

In addition, when allocating your space for the potatoes try to find a space to plant some standard mint, with enough plants that will provide a good supply throughout your potato harvest months. Mint is best grown away from everyone else as the roots need to be controlled and can quickly overtake your other herbs and plants if not control.



**meat the need**

**NZ FARMERS, FEEDING NZ FAMILIES**

**DO YOU WANT TO HELP  
FEED NZ FAMILIES?**

A donation of just one cow will provide over 650 meals in your local community.  
Together as nz farmers we can feed nz families.

visit us at [meattheneed.org](http://meattheneed.org) or call us on 0800 632 884



## Cleaning House

There's something you gotta do every so often, and that's clean your room. In this case, your digital room. First questions first: you know what a file and a folder is, right? If not see my previous article on basic computer terminology. Now, lets say you've collected too much junk. Say there's a bunch of stuff on the desktop of your computer (you know what a 'desktop' is in the context of a computer, right? See that previous article).and it's disorganised and it's out of hand, and you can't make head nor tail of it. Well, luckily basic human instinct is at hand. We humans tend to organise stuff into categories, we get rid of the stuff we don't want, and we make copies the stuff we want to keep long-term.

So organising stuff first; the basic 'file' and 'folder' metaphor of all modern computers is analogous to a filing cabinet with folders and files. To organise your files, start with putting stuff into your computer's basic user folders – Downloads, Documents, Music, Videos, Pictures (sometimes others as well). These are what we would call the 'root' folders, within which you can start organising your files. Put your pictures in your Pictures folder, etc. You \*can\* create folders on your desktop as well, but this tends toward organisational chaos from what I've seen – better to put stuff where it belongs.

Within these folders you can create sub-folders to further organise your data. How you do this depends on your operating system (eg. Windows or OSX or iOS) but it all comes down to the same simple steps - create a folder, give it a name, move stuff into it. You can create as many sub-folders and sub-sub-folders and sub-sub-sub-folders as you like – there don't tend to be any majors limits for this on a modern computer system. Once you have your stuff categorised, it's always a good idea to prune things a bit and get rid of files that you don't need anymore. When you delete files/folders on a modern computer, they generally go into an interim storage area like Trash (Macs) or Recycle Bin (Windows). The advantage of this is it prevents the scenario where you accidentally get rid of something then can't get it back, which was the case for most early operating systems like MSDOS. The downside is that people often forget to empty their Recycle Bin or Trash, and end up with a lot of wasted space on their computer. Still, it's better than the alternative.

Lastly anything that's important should be stored in two places at all times - but not two places in the same computer! Because every storage device you have will die eventually (see previous articles on backing up data). External backup options include cloud storage (Dropbox etc), external hard drives or flash drives, or disc media like DVD's. Since DVD's don't hold very much compared to an external hard drive, they're not used much any more – in fact, many new computers don't even have DVD drives.

The advantage of doing all this is that (a) you get a computer that doesn't feel like chaos to use (b) it's easier to find things you need and (c) you create better security for the things you keep. Good luck with your clean-up!

Need help backing up/cleaning up? Email Matt at [info@homepcsupport.co.nz](mailto:info@homepcsupport.co.nz) or phone **0211348576**. \$60 per hour, or \$50 for drop-off-to-workshop services.



# Bentley Home PC Support



## Printer brands

Printers. Gotta have 'em, gotta loathe 'em. The cost of ink alone is something to turn the corners of your mouth earthward. Besides that, they tend to break down after a while, due to one mechanical component or another failing. So consider them an ongoing expense. How do you reduce that cost? Well, estimates as to which is more expensive to run, in terms of inkjet vs laser printer, vary, but there's no comparison in terms of the quality of the print: laser wins, hands down. Laser is also a lot faster if you're printing a lot of material. But inkjet cartridges can often be refilled by hand, or with the help of a local printer ink outfit, so they *can* be cheaper.

Brother and Ricoh are the two biggest names in laser printer companies, but most printer companies now do both laser and inkjet varieties. But for the 'big two', Brother's alright. Ricoh's customer service unfortunately leaves a lot to be desired. Most people are going to opt for an inkjet printer, as the up-front buying cost tends to be lower, so which brands are best? As with all things tech, these change over time, and a company that was once good, can become sub-par, so take this with a grain of salt.

In my experience, Canon has been the most reliable. They were as far as I know the first to introduce separate ink cartridges for each ink colour, which greatly reduces waste and printing costs. Their print quality tends to be very good, particularly for the Pixma variants. By the way, I always recommend systems with the full 5 or 6 cartridges (black, photo black, cyan, magenta, yellow), even if they cost a little more - they have better print quality and cost less to run long term.

Epson is second on the list, usually reliable, though a lot of the cheaper models fail early (and this goes for all cheap printer models, mostly). They also have some models with very-large-scale cartridges/tanks, which are a lot less wasteful and expensive to run. HP is generally an 'avoid', although their larger models tend to be significantly more sturdy. I don't tend to recommend anything HP - they have a nasty habit of skimping on component quality, which is how they make things so cheap.

Hopefully that gives you a bit of a head start. Today it's almost an anachronism to print something out rather than reading it on a screen, but there can be times when it's useful. As a final aside, cheap paper? If you're not printing anything significant, copier paper is perfectly fine (it is simply a bit thinner than most printer paper), and tends to be a lot cheaper. There's even a fully-recycled variety available, again for cheap (google "reflex copy paper recycled a4 nz" to find new zealand sellers).

Need help with your printer/need help not using your printer? Email Matt at [info@homepcsupport.co.nz](mailto:info@homepcsupport.co.nz) or phone **0211348576**. \$60 per hour, or \$50 for drop-off-to-workshop services.



**Bentley Home PC Support**



## Reasons to give up buying bottled water

Bottled water is an everyday convenience for many. People buy it to drink on the go, at the gym, for guests at parties. Even at home, it might seem easier to grab a bottle of water than to fill a glass and wash it up afterwards.

A disclaimer: bottled water can be a lifesaver if you live in an area with contaminated water, or for people living through a disaster where clean water is not available. However, even in our rural areas, many people can get safe drinking water straight from the tap.

Bottled water has some huge negative consequences. Buying water in plastic bottles is bad for the environment, and a waste of money.

### Four reasons to stop buying bottled water:

1. Plastic pollution - We might put plastic bottles into our recycling bins, but less than 10% of plastic is ever recycled worldwide. Most plastic bottles end up in landfill, and as plastic has an estimated lifespan of 450 years, these bottles are going to keep piling up.
2. Wasting money - Bottled water is much more expensive than tap water. Studies have shown that bottled water can cost from 300 to 2600 times the cost of tap water.
3. Plastic bottles need a lot of water to make them – US studies have shown that it takes 1.39 litres of water to make a 1 litre plastic water bottle. That extra 0.39 litres might not sound like much, but over millions of plastic bottles, it really adds up.
4. It could be tap water anyway - some brands of bottled water are from the municipal water supply, rather than from springs. In the USA, Pepsi's brand Aquafina and Coca-Cola's Dasani brand are both from a 'Public Water Source', meaning they are tap water.

### Alternative to bottled water?

Buy a reusable bottle and refill it over and over – to reduce plastic waste and save money!

Find me at [www.eco-pippa.com](http://www.eco-pippa.com) and follow me on Facebook, Instagram, and Pinterest – just search for 'Eco Pippa'.

The facts and figures I have quoted in this article are covered in more detail in the post on my website, along with links to the data source.

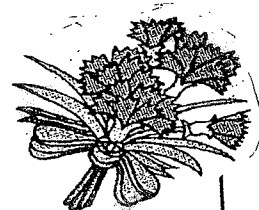
**Pippa**

## TAUWHARE GARDEN CLUB

[launched in late 2019]

Monthly meetings, garden visits, guest speakers and more.  
Find us on Facebook – search for 'Tauwhare Garden Club' or contact Pippa on

0272935184 for details





# NEWS FROM YOUR WAIKATO DISTRICT COUNCILLOR

## - 24 July 2021



### **Representation Review**

After a year of Councillor workshops, debates, community consultation and meetings with focus/stakeholder groups Waikato District has released the proposed representation arrangements for the next local body elections, including the shape and number of the district's voting wards and the number of Councillors elected. Council is required to review its representation arrangements every six years and our representation arrangements must reflect our communities of interest.

The initial proposal now open for consultation recommends retaining 13 Councillors – two Maaori Ward Councillors representing the whole district, 11 ward councillors representing seven wards and the Mayor elected at large. The ward structure has to take into account likely changes to demographics and population in the district in the next six years.

The population that each general ward councillor represents is within the range of 6155 +/- 10% to comply with section 19V(2) of the Local Electoral Act 2001 with the proposed Tamahere-Newcastle General Ward population estimate at 20 June 2020 being 17,150, population per councillor of 5,617 and that of the proposed Waerenga-Hukanui General Ward population 12,250, population per councillor of 6,125.

I stood at the last election knowing that there would be major changes to representation and mentioned this in my election brochure as one of the major pieces of work Council would undertake during this term that would impact residents of the Eureka Ward and the Waikato district. I had anticipated the demise of Eureka Ward and an amalgamation of the wards surrounding Hamilton city with perhaps Eureka and Tamahere Wards being merged.

However the proposals now being brought forward for consultation split the Eureka Ward – the districts of Newstead, Matangi and Puketaha (south of SH1b) joining Tamahere and Newcastle Wards with three Councillors at large and the districts of Eureka, Tauwhare and Puketaha (north of SH1b) joining the Waerenga-Hukanui Ward with two Councillors at large – this ward will stretch from the Firth of Thames in the north to the boundary with Cambridge in the south. The final names for the new proposed wards have not been finalised. See maps – top map current boundaries, bottom map the proposed ward boundaries.

I would encourage residents to read the information on line and make a submission. If you would prefer to receive a paper copy of the maps and/or would like to discuss any matter pertaining to the changes feel free to phone me.

**Sue Edmonds, Chair of the Eureka Community Committee has written an article about the proposals for this issue of the Express. I hope you can attend the meeting she has arranged. She will have a printed copy of the proposal and maps for you to peruse.**

Submissions can be made online at <https://shape.waikatodistrict.govt.nz/reshape-waikato> where the full information about the representation review and proposals, including the maps of the proposed wards, is available. **Submissions close 5pm 20 August with hearings scheduled for 9 / 10 September.**

\*\*\*\*\*

The June update on the Waikato section of the **Waikato Expressway** advises that the completion date has moved to mid-2022.

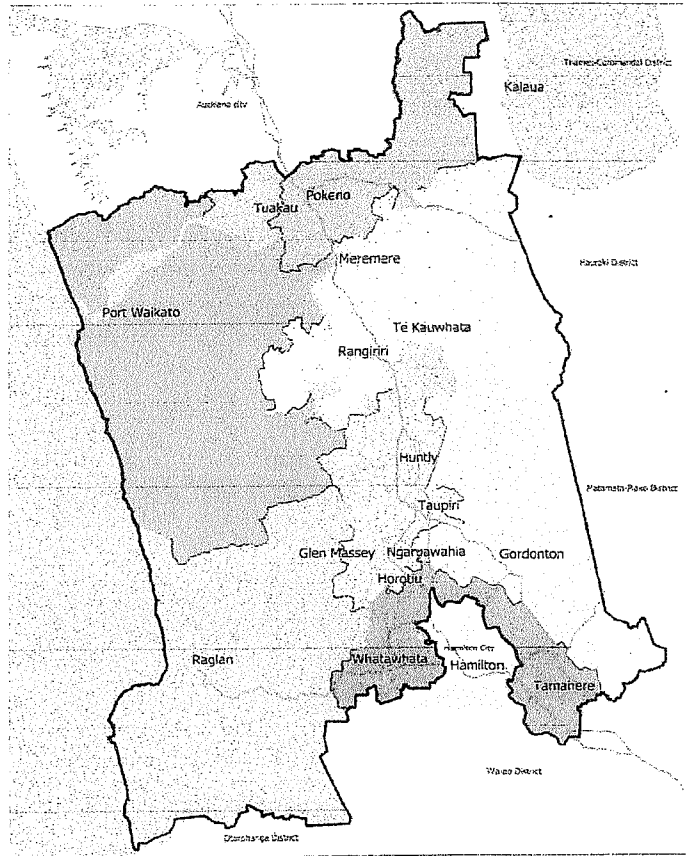
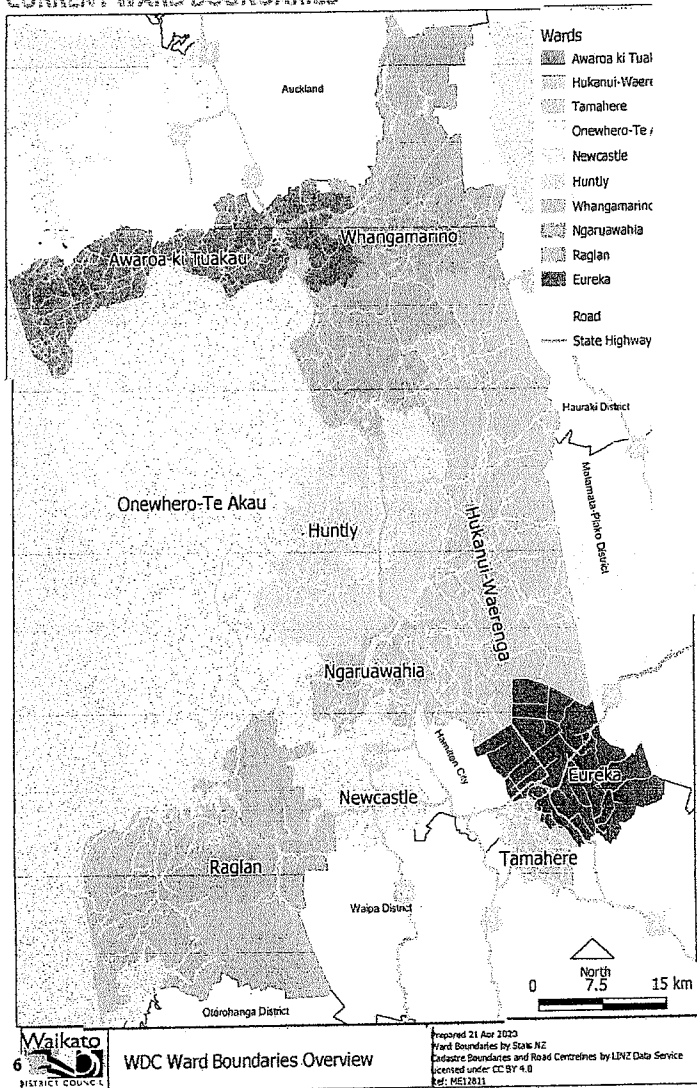
The project team reports that the section has been significantly impacted by COVID-19, labour and material shortages, and challenging ground and drainage conditions in some area.

To read the full newsletter go to <https://www.nzta.govt.nz/projects/waikato-expressway/hamilton>

Contact me any time -  
**Rob McGuire – Councillor Eureka Ward**  
Ph. 824 3696 / Mob 0274 970 966 / Email: [rob.mcguire@waidc.govt.nz](mailto:rob.mcguire@waidc.govt.nz)

# CURRENT WARD BOUNDARIES AND PROPOSED CHANGES TO THE WARD BOUNDARIES FOR THE 2022 LOCAL GOVERNMENT ELECTIONS.

## CURRENT WARD BOUNDARIES



## PROPOSED WARD BOUNDARIES

# Dig It Earthworks

## EARTHMOVING & EXCAVATION

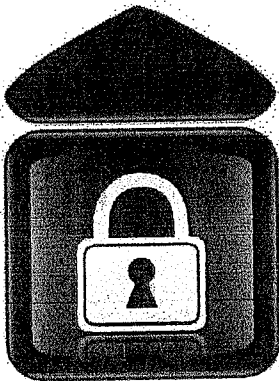
- House Pad & Driveway Prep
- Driveways
- Section clearing
- Footings & Post Hole Boring
- Landscaping & Lawns
- Farm Maintenance & Races
- Truck & Labour Hire
- Calf/Goat/Pig/Chicken Shed Clearing

## CONCRETE LAYING

- House & Garage Pads
- Driveways
- Sheds/Workshops
- Patios
- Footpaths

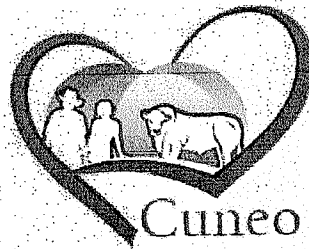


**Give Liam a call today for a free quote on 021 02839174**



## Eureka Storage

Many options from 9m<sup>2</sup> - 307m<sup>2</sup>  
Short term + long term  
Call me to discuss your requirements



## Cuneo Piedmontese

HEART • HEALTHY • BEEF

Pedigree + Commercial  
Purebreeds For Sale  
Bulls, cows + yearlings

**Don Knight 0274950535**

**117 Hooper Road, Eureka**



Jackson Contracting

*Growing Together*

Maize, Grass  
Silage & Hay  
for Sale!

**Providing Professional Agricultural Contracting Services**



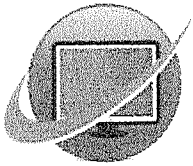
### Services Include:

- Baling, Round, Big Square & Conventional
- Spraying
- Grass Silage – Chopper & Loader wagons
- Maize Silage – Cultivations, Planting & Harvesting
- Bulk & Hiab Cartage

**Call Jeremy Rothery for inquiries or bookings 027 526 2441**

[www.jclag.co.nz](http://www.jclag.co.nz)



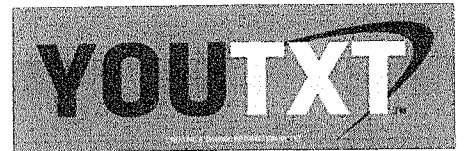


# CTAS



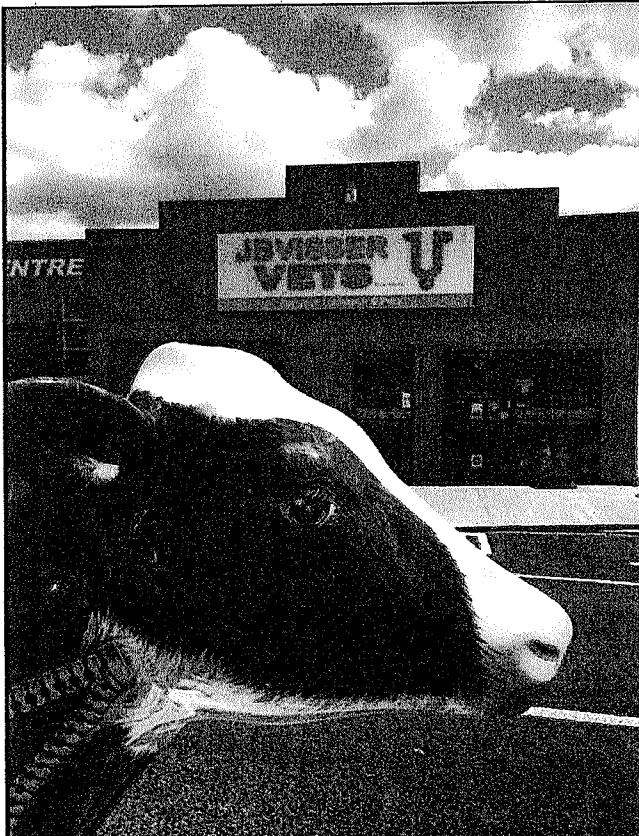
100% NZ Owned and Operated

- TXT and Email Alerts and Reminders
- TXT Shortcodes for your business or club
- Flight Status by TXTing your Flight to 8808
- Live Video and Audio Streaming on the Internet



Create and Share information by TXT

[www.ctas.nz](http://www.ctas.nz) | [sales@ctas.nz](mailto:sales@ctas.nz) | [www.youtxt.nz](http://www.youtxt.nz)



**"Your animals,  
our commitment.  
We aim to strengthen the  
health of our animal  
community by providing  
accessible, compassionate  
and affordable,  
quality veterinary care."**

If you aren't able to visit our practise in Morrinsville, we can bring our expertise right to your door or paddock!

**Ph 07 889 0414**

**JBVISSER  
VETS**   
For your Livestock & Pets

# nzgarden sheds

*the best little Sheds around!*

Your local garden shed supplier of NZ made, self assemble Garden Sheds (Zincalume or Colour Steel)

## GET IN TOUCH...

- \* EASY ASSEMBLY
- \* MADE TO LAST!

### Waikato Shed Company

218 Hunter Road, Eureka,  
Hamilton

Phone: 07 824 1045

Email: sales@nzgardensheds.co.nz

ENQUIRE FOR A BROCHURE NOW

## FRESH APPLES & PEARS STONEFRUIT IN SEASON

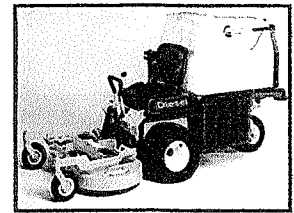


### NEWSTEAD ORCHARD 552 Morrinsville Road

OPEN MON-SAT.  
W J McMiken & Co  
Morrinsville Road  
Tel. 856 4478

## LAWNMOWING & GARDENING SERVICES

Professional lawn & garden-care service



### Alex & Sharyn MacDonald

For free no-obligation quote:

Phone: 027 479 7282  
or 027 308 6781

Email: macdonaldmowing@gmail.com  
www.lawnandgardenservices.co.nz

Residential - Rural - Commercial Mowing  
Spraying - Fertilizing - Weedeating

## ROSS PUMPS

&

Filtration Specialists Ltd



Servicing and installation  
On all types of pumps  
Full Water Treatment  
Service Available

### DAREN ROSS

Tel. 8241 726 or 0274 346 571

Fax. 8241 879

Email: rosspumps@xtra.co.nz

## SPYVES PANEL SHOP for all Panel and paint requirements



## AUTOROBOT CHASSIS and ALIGNMENT MACHINE

Ph Ron, Lindsay or Karen

8241 890

Fax 8241 892

Mob 027 280 0346

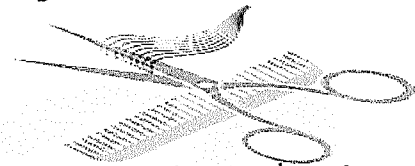
## HAIRFIELDS

HAIR DESIGN

95 HOOPER ROAD

Sharon Laurent

Full salon facility in Eureka  
Total hair care professional  
with many years experience  
Agent for Nutrimetics also



Open Tuesday to Thursday  
Late nights Tues/Thurs  
Tel. 824 1712 or 027 280 5978



161 Morrinsville Road, Hamilton, 3286  
Phone: 07 856 4522 Fax: 07 856 9487 Email:  
enquiries@newsteadvets.co.nz  
Website: www.newsteadvets.co.nz

Newstead Vets offer a full range of veterinary services for small animals including:

- Consultations (by appointment only)
- Soft Tissue and Orthopaedic Surgery
- Digital Radiography and Ultrasonography
- NZVA Microchipping Accredited Practice
- Nutrition and Product Advice
- Rural location with ample parking
- Referral to Specialists
- PennHIP Certified
- Full Laboratory Service
- Hospitalisation
- Cremation Service
- Convenient Online Shop



**TAUWHARE HOME KILLS**

**TREVOR & LEONIE BRUNTON**

**1 126 TAUWHARE ROAD**

**PH: 07 824 0880**

**FX: 07 824 0809**



**Pilates Studio In Eureka**

Group, private & duet sessions available

Mat, Reformer & Barre

Contact: Jas 021 904 806

facebook.com/thepilatesshedhamilton

**EUREKA  
POULTRY FARM**

13 Hooper Road

Ph 824 1762

**NIC & MARIA STOLWYK**

**Hobby Hens**



Young pullets from  
5 weeks to point-of-lay  
Great for lifestylers  
Bagged up chook manure  
Hours Mon-Sat 8-6

**COMPUTERISED  
BULK SPREADERS LTD**  
Cartage & Spreading



**FERTILIZER, LIME, UREA  
SPECIALISTS**

Competitive Rates

**PETER JONES**

**027 496 3370 07 887 4000**

26 years service in the  
Morrinsville district



*Rae  
Winter*  
*Interiors on Hoeka*

GIFTS - INTERIORS - KIDS

196 HOEKA ROAD, RD4  
MATANGI, HAMILTON

FOR AN APPOINTMENT  
CONTACT ME

029 886 6983

interiorsonhoeka@gmail.com



Safe H2O

safe water fast

Premium water tank cleaning and purification  
without the premium price tag

Resolve smells, bad tastes and contamination

No purchasing replacement water

No damage to inside of tanks

100% satisfaction guaranteed

Ministry of Health recommend annual servicing of your collection tanks

**When were yours last cleaned?**

Craig Nicholson 027 660 5329 0800 SAFE H2O

cjn@safeh2o.co.nz www.safeh2o.co.nz

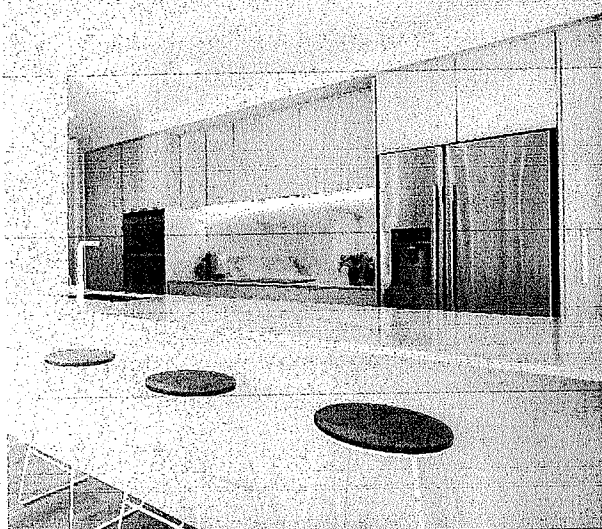
**The Kitchen  
Lady**

For your design,  
manufacture and  
installation needs.  
We come to you.

**RENEE MOUAT**

021 177 8695

www.thekitchenlady.nz



KITCHENS | VANITIES | LAUNDRIES | WARDROBES

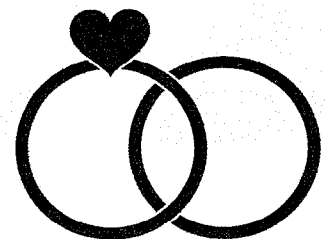
*Sam Ware*

MARRIAGE CELEBRANT

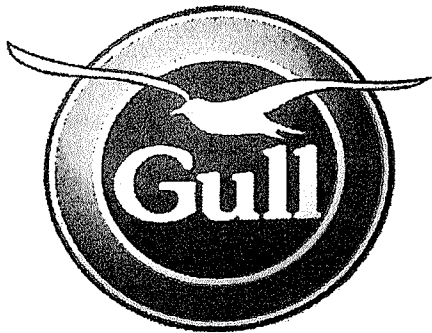
**021 897 706**

sam@samwarecelebrant.co.nz

www.samwarecelebrant.co.nz







# **GULL EUREKA**

**PETROL – DIESEL – LPG - OILS & LUBRICANTS**  
**FARM SUPPLIES – GROCERY ITEMS**

SHOP HOURS: MONDAY TO FRIDAY 7:30AM – 6:00PM  
SATURDAY 8.00AM – 12.00PM

**AND NOW: FUEL 24 X 7 PETROL & DIESEL FROM OPT (OUTDOOR  
PAYMENT TERMINAL)**

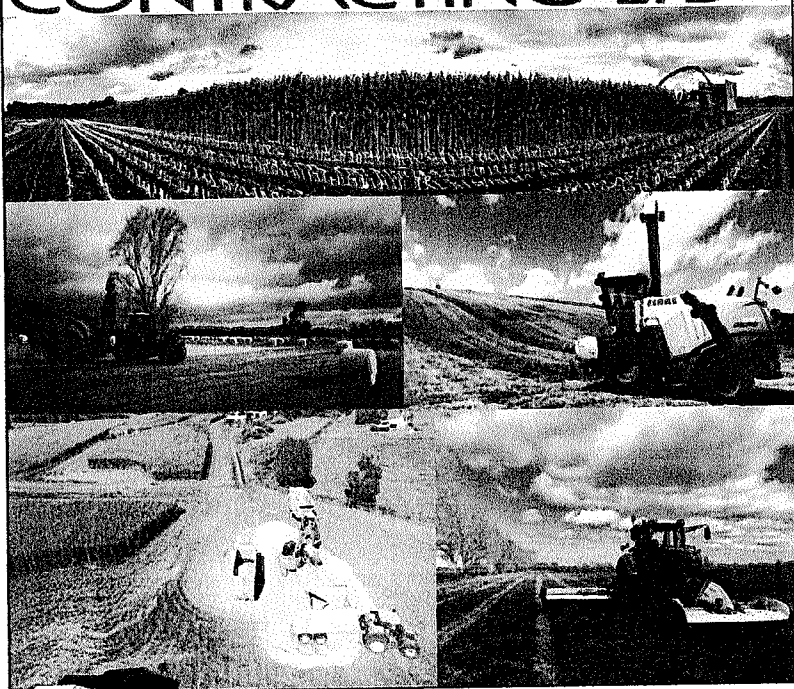
EFTPOS – RD1 FARM SOURCE – FARMLANDS – CARDLINK

AMEX – MASTERCARD – VISA



us on Facebook for discount day and promotional information

## **Walling** **CONTRACTING LTD**



For all your:

- Ground Cultivation
- Planting
- Re-Grassing
- Under Sowing
- Grass Silage
- Maize Silage
- Digger &
- Spray Requirements

Ph: 07 824 0894

Rebecca: 027 493 4476

Email:

walling.contracting.ltd@gmail.com





## Local Company based at Eureka

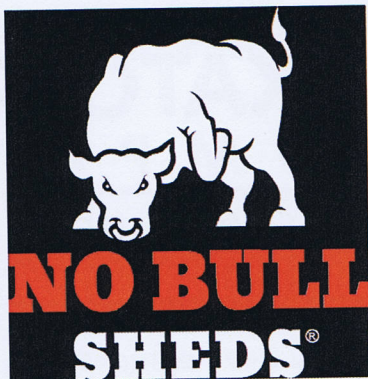
Our sheds are all made from NZ Steel and certified NZ made so by purchasing from us you are supporting more than one New Zealand Business

*Lifestyle  
Rural  
Industrial  
Habitable  
Sleepout*

### No Bull Sheds

218 Hunter Road  
Eureka  
07 824 1045

[Enquiries@nobullsheds.co.nz](mailto:Enquiries@nobullsheds.co.nz)  
[www.nobullsheds.co.nz](http://www.nobullsheds.co.nz)



Proud Sponsor of

**No Bull Sheds**

**F1 Sidecar Team**

This year the team get to race at every track in New Zealand!

Busy Times ahead for the 2021/22 Season:  
Aug 8th...HMCC Pukekohe Revival Meeting

#### **Auckland MCC Championships**

Rnd 1, 12th September, Hampton Downs  
Rnd 2, 17th October, Hampton Downs  
Rnd 3, 21st November, Hampton Downs  
Nov 26th - 28th, Southern Classic, Timaru

#### **2021 Suzuki International Series:**

Rnd 1, 4th-5th Dec, Taupo  
Rnd 2, 11th-12th Dec, Manfeild  
Rnd 3, 26th Dec, Wanganui

#### **2022 NZSBK:**

Rnd 1, 8th-9th Jan, Christchurch  
Rnd 2, 15th-16th Jan, Invercargill  
Rnd 3, 26th-27th Feb, Track-TBC  
Rnd 4, 5th-6th March, Hampton Downs

I know the guys would love your support if you are able to get to any of these events







# WAIKATO SHED COMPANY ✓✓

great sheds, done right!

## Local Company based at Eureka

Our sheds are all made from NZ Steel and certified NZ made so by purchasing from us you are supporting more than one New Zealand Business

*Lifestyle  
Rural  
Industrial  
Habitable  
Sleepout*

Waikato Shed Company

218 Hunter Road

Eureka

07 824 1045

[Enquiries@waikatosheds.co.nz](mailto:Enquiries@waikatosheds.co.nz)

[www.waikatosheds.co.nz](http://www.waikatosheds.co.nz)

### New Development in Te Pahu



### Designed by: Jason Davis

Working with a local developer, Waikato Shed Company designed and built sheds to compliment some of the new houses being built in McLennan Lane Whatawhata.

All of these sheds have a 2.2H x 4.8W Sectional Door and a 2.9W Ranch Slider.

Coming in at an average of 60m<sup>2</sup> they provide a great option to store the toys (for both big and little kids), have a workshop or use as a rumpus room or gym.

What extra space could you use?

Get in touch today to design a shed around your individual needs

### DID YOU KNOW...

Steels first major demand came from the railroads

Steel roofs last more than 50 years while traditional roofs last about 17 years

Steel was used as a prosthetic as early as 1504 when a knight made a new arm that could grasp a feather or a sword