

Eureka Express

Vol XLI No. 8 Circ 315

October 2020

www.eurekaexpress.co.nz

editor@eurekaexpress.co.nz



EDITORIAL

I am going to deviate from the normal editorial piece and not write just about myself this time around but around a topic that is very close to my heart.

I thought about what the most relevant topics are in our lives currently. We just had our election and we have Covid-19 as part of our daily lives. I think we are all totally saturated on updates around the election and the new government forming and about the daily positive cases of Covid being detected.

The one thing that I am becoming more aware of at work and in my social circles is mental wellbeing. Since 21 September to 27 September was Mental Health Awareness Week it feels more relevant to write about Mental Wellbeing.

Covid-19 has brought with it more than just a change in life for us, it has brought economic uncertainty and future uncertainty. Unfortunately, all these changes can lead to stress and anxiety. Doctors have seen an increase in patients with anxiety so much that they call it the Covid Anxiety. It is not the fear of getting Covid but more the impact that Covid is having on everyone's life and stability.

We are brought up to have this level of resilience and we are often prompted along the way that we should be strong, but what happens when you are feeling like you have reached your level of what you can endure?

This is the time to reach out to someone. A friend, a family member or any of the organisations that are here to assist.

www.depression.org.nz is a great website with so many tools and links to help. They have their free helpline 24/7 available where you can talk to a trained counsellor – 0800 111 757 or text 4202.

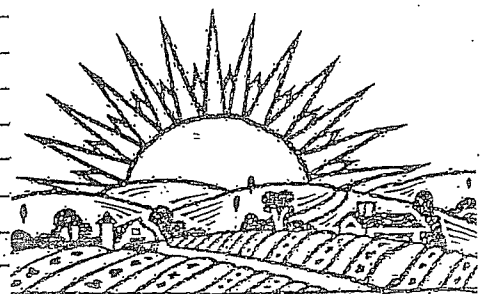
Personally, I have had a journey with depression and anxiety and had to learn to be kind to myself. I know my triggers and I have a few coping methods but sometimes it is just good to talk about it to someone that can listen and not judge. Depression is not a weakness and asking for help is not seen as being weak.

If you feel low or just want to talk reach out and find support!!

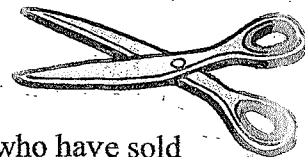
Karin Vink

WEATHER

Weather for Sept 2020		
Rainfall total	62 mm	
Rain Total for year	459 mm	
Rainy days	9	
Most daily rainfall	16 th Sept	
Highest wind speed	48.2 km/hr	29 th Sept
Temp high	20.6 C	26 th Sept
Temp low	-1.1 C	4 th Sept



SNIPPETS



FAREWELL TO EUREKA to John and Sue Marshall of Eureka Road who have sold their home and are on the move to Taupo to be nearer to family. Sue and John built their lovely home and became Eureka residents in 2003. Over the years they have both contributed a lot to our community through the EExpress and other community projects. Sue has been a regular on printing days, helped John compile the district phone list, actively helped with the Anzac Poppy tree, besides taking on secretarial duties on the EE committee. We thank you sincerely John and Sue. You will be greatly missed but we wish you every happiness in your move.

WELCOME TO EUREKA to new residents on Waverley Road (ex Johnson property), Daniel Bradley and his partner Danielle Hansen, and Danielle's dad Charlie Hansen. Their family are son, Byron O'Donnell, daughter Paige Paikau, and Quinn Bradley. Daniel is a roofing contractor and Danielle works for Access as a caregiver. A warm welcome to you all. Ph 0212100658.

PHONE LIST RESPONSE. We are delighted that Natalie and Shaun Bartlett have put their hands up to compile the local phone list. Thank you Natalie and Shaun. Great to have you 'on board'.

Condolences

Sincere condolences are extended to Craig, Jackie, Libby, Emma and Zac Griffin of Tauwhare Road on the death of Craig's father, Kelvin, on October 12th.

A dearly loved father, father-in-law and grandad who will be sadly missed.

LITTER!!

What a shame to see so much rubbish dumped along our local roadsides. Such a blot on the landscape! We seem to be just far enough from the nearest fast food and liquor outlets to cop the emptied containers, lids, straws, napkins, cans, cartons etc etc.

What is the solution??

Meantime please help to keep our roadsides litter free.....

Be proud of
your
community
**DON'T
LITTER**

MARKETPLACE

WANTED TO RENT

Hi to all the lovely Eureka community,

My husband Simon, 8 year old son Mal and I (Jacqui) are in need of a house in the rural Eureka area. We have been given notice in the place we have lived in for just under 2 years so would appreciate any help from the local community in finding a new place to call home. Mal attends little Motumaoho School which he loves and we would like to keep this the case. We can provide good references, pay our rent on time and look after our rental as if it is our own home. Please contact Jacqui directly on 022 650 9007 or by email at Jacqui.parangi@elite.ac.nz if you can be of any help.

MORRINSVILLE FIREWORKS EXTRAVAGANZA

Morrinsville Recreation Ground

Sunday 7th November opens 5.30pm

Entry \$25 (2 adults and 2 children)

Adult \$10.00

Children 14 years and under \$5.00 (under 5 free)

Tickets available Morrinsville i-site visitor Information Centre



Food, Fun and Entertainment

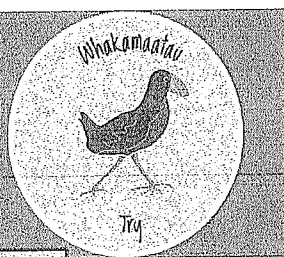
Bring a picnic, Mobile Food caravans on site.

No personal fireworks – No alcohol permitted

More information at <http://www.morrinsvillenz.co.nz/mbs-advisors-fireworks-extravaganza-202/>

Tauwhare School

1072 Hamilton 32072 New Zealand
admin@tauwhare.school.nz
07 824 0363



Accomplished Learners Striving for Success in Tomorrow's World

YEAR 5 & 6 SCHOOL CAMP

Our senior students are off to Peter Snell Village in Whangaparoa for a weeklong camp. They will be snorkelling at Goat Island, skiing at Snow Planet, doing archery, abseiling, water slide, paintball, Burma trail and much more. We wish them all the best, and have our fingers crossed for great weather!



CALF CLUB What a wonderful day we had on Friday – this was Calf Club as it used to be. 55 animals, lots of people and a real celebration of rural life. Calf Club is a prime example of our unique country school local curriculum. Our stewards were outstanding; every one of them was a past pupil of our school. How lovely of them to bring their passion and skills back to support us. We cannot thank Paula enough for all the hard mahi leading up to this successful day and thank you to so many others who helped in so many ways.



Thank you to Marion Rogerson for bringing her Farmyard animals – the horse rides were a highlight for many of us 😊.



Thank you to Ivan and Delia Pizzini for judging the children's sand saucers and vegetable creations. We love that you come each year to do this for us 😊

Thank you to Natalie Bellamy for judging our first Spring Art Competition. 1st Prize went to Liam Oliver 7yrs, 2nd Jordan Dowling 10 yrs, 3rd Madeline Barker 5yrs and 4th Vivienne King 5yrs.

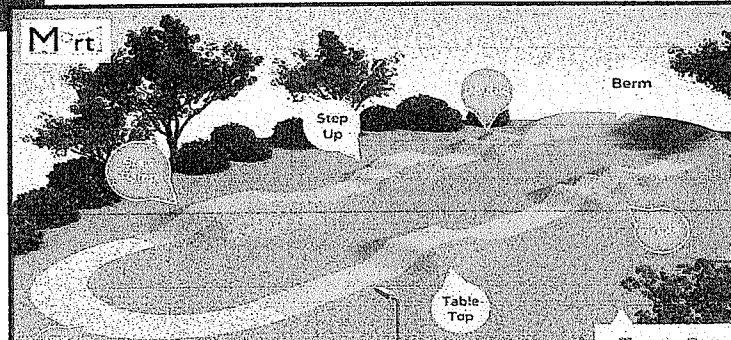
BUILDING PROJECTS

New playground area for our juniors outside Rooms 5, 6, 7. With so many new 5 year olds enrolled for next year we needed a vibrant indoor/outdoor learning space.



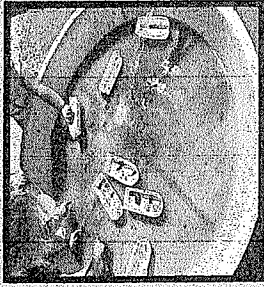
We are replacing our shade sails with a **permanent deck** to allow for all-weather indoor/outdoor learning. The shade sails will be relocated to the new junior play area.

Scooter track for children aged 5 to 11 years. This is a suggested design to incorporate all the things the Yr 6 children would like. Mark Dawbin from Schick Civil Engineering LTD is very kindly helping us with the design work.



NEXT STEP IN FOR 4-5 YR OLDS

Wednesday 18th November 9am – 10.30am



Pukeko Preschool

OCTOBER 2020

NEWSLETTER

IMPORTANT DATES

- **Friday Mornings Room 7 visiting at 11am**
- **Bus Trip Friday 30th of October**
- **12th November Sam & his Farm Yard Friends visiting with Tauwhare Play-group**
- **Our last day of the year for 2020 is Wednesday 23rd of December**
- **Our first day of Term 1 2020 is Thursday 14th of January**

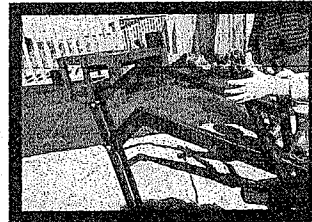
Kia ora and Welcome to October.

Pukeko Preschool warmly welcomes Jo Watson to our teaching team, we are all enjoying getting to know her and I hope you have all had a chance to meet her over the last couple of weeks.

We have said goodbye to some of our tamariki who have headed off to school! We wish Max, Mason and Hunter well on the next part of their learning journey.

We have celebrated this month that we have been in our new building for one year in September with a BYO picnic thank you to those who attended we really enjoyed coming together to celebrate.

We have had an amazing opportunity to work with some students from St Johns college over the last year to create some new additions to our outdoor play space. It has been



Pukeko Preschool's New Digger!

amazing to work with our community and have these amazing items donated to our Centre. Many thanks to Rory, Dion, Matt and Logan along with

their teacher Mr McGowan. A special thank you to Mr Tester who helped coordinate this amazing experience.

Summer is fast approaching and with our Sun smart Policy I would I just like to remind you that all tamariki need to have a hat that protects their face, neck and ears - baseball caps do not offer enough protection so therefore are not recommended.

We as a centre will apply Sunscreen in the morning and then re-apply again in the afternoon if you would like your tamariki to have a different sunscreen to what we have at centre then we welcome you to send some along named, along with their named hat.

Thank you for continuing to support our tamariki with healthy lunch boxes, limiting packet food, sending drink bottles each day and remembering to eliminate peanuts!

We really appreciate it!

Now that we are safely out of Level 2 we are starting up a weekly visit with Room 7 from Tauwhare School to keep the connections with the tamariki who have ventured off to school and support future relationships. We have some of our policies being reviewed, these are available in a folder at the sign in desk, please feel free to have a read and provide us with any feedback, we really value our

community being involved.

We also have emailed out a survey around the review of our Philosophy and vision statements and would love to have all feedback in by the 30th of October.

There is a huge collection of socks that need to find a home. Karen has kindly paired them all up and displayed them at our front door please take home any

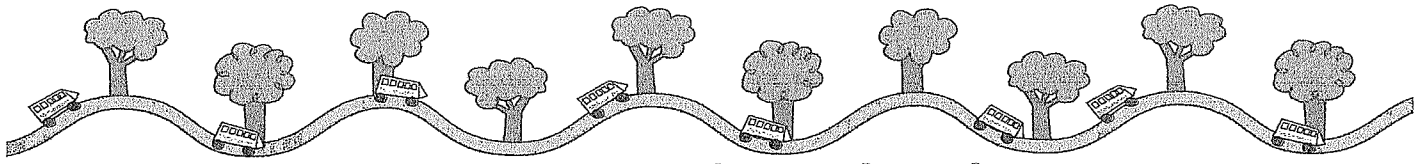
that you feel are yours, any left over will be re-homed next Friday.

I would like to end this newsletter with a humongous thank you for all the donations to our sharing trolley this has been a huge success in so many ways.

Have a fabulous long weekend

Ngaa mihi

Karina, Pauline, Nola, Jacqui, Karen and Jo.



Motumaoho School

2101 State Highway 26, RD2 Morrinsville 3372 | office@motumaoho.school.nz | p. 07 8897597

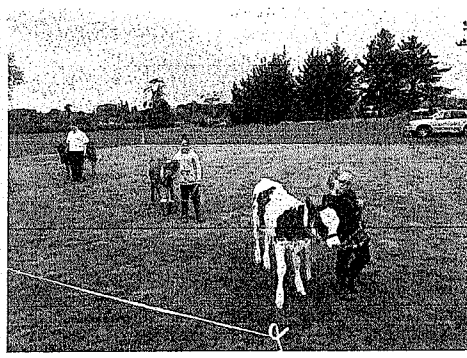
October, 2020

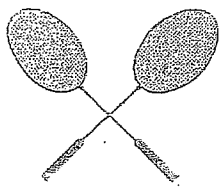
Kia ora koutau katoa,

LIVESTOCK DAY - On Monday the 19th October we held our annual school Livestock Day. Again, a hugely successful day for our learners, parents, family members and community. It's great to see we continue our rural event which holds significance and a special place for our school. To include the classroom activities were fantastic and its great seeing those learners who don't have an animal can be part of our successful day.

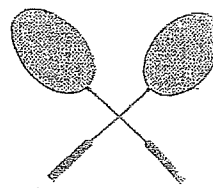
NATURE STRUCTURE - Our junior learners are progressing with their nature structure and have been making the walls with natural resources found on our school grounds. Great work Room 2!

Nga mihi
Phillip Otto – Principal





EUREKA BADMINTON CLUB



JUNIOR BADMINTON NEWS

Closing night was held before the start of the school holidays.

CHAMPIONSHIP RESULTS

Junior Girls Winner - Tayla Kay

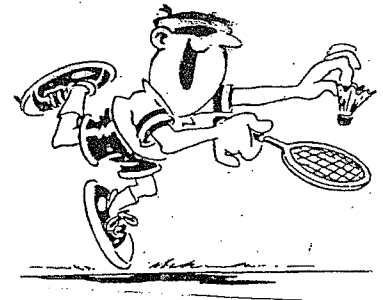
Senior Girls winner - Kirsten Tu

Junior Boys winner - Ben Tau

Senior Boys winner - Cayden Jackson

Girls Doubles Winners - Kate Silvester and Martha Dresser

Boys Doubles winners Madix Knight and Samuel Silvester

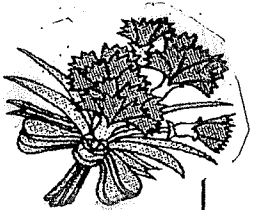


Congratulations to you all.

Badminton will resume in Term Two 2021

TAUWHARE GARDEN CLUB

[launched in late 2019]



Monthly meetings, garden visits, guest speakers and more.
Find us on Facebook – search for ‘Tauwhare Garden Club’ or contact Pippa on

0272935184 for details

ADVERTISING RATES

Classified Adverts Free

Small Business Adverts \$10 /month
- x 10 insertions \$80 /year

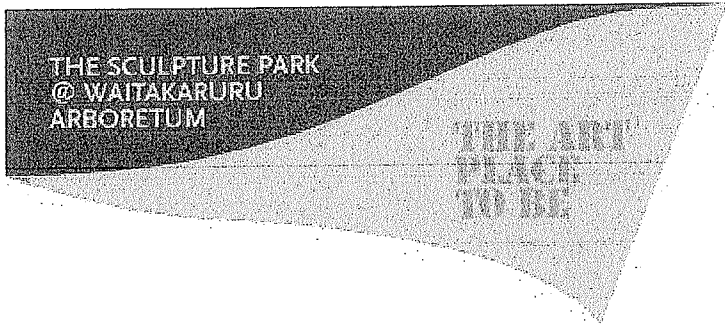
One Third Page Adverts \$15 /month
- x 10 insertions \$120 /year

One Half Page Adverts \$20 / month
- x 10 insertions \$160 /year

CONTACTS

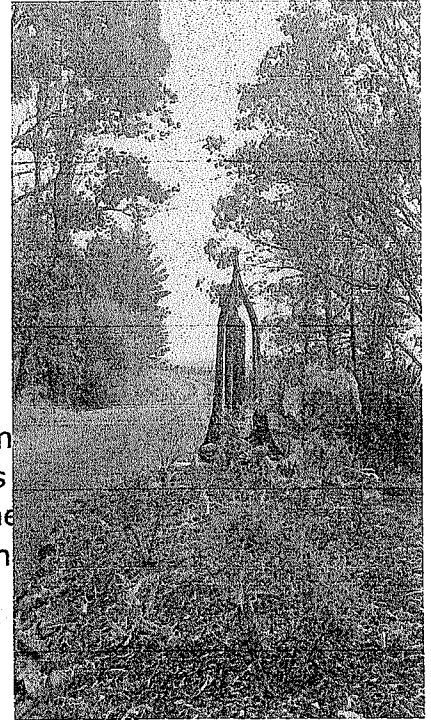
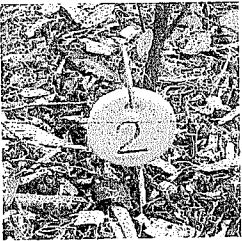
Gail Mayall (Editor)
70 Eureka Road
Ph: 07 824 1758 or 021 211 3348
Email: editor@eurekaexpress.co.nz

Glenys Middlemiss (Treasurer)
Ph: 07 824 1647
Email: tres.eurekaexpress@gmail.com



Native Tree Identity Area Opens

Recently we finished **Plants of Aotearoa** where visitors can learn more specifically. This is where a list of more than 40 identified NZ plants location. As all 2400 NZ native trees planted this year are up on the harvested pine area, they are not near to visitors. Many of you will know where some of the native trees planted over the last 29 years are listed. In this new area, we have taken examples of the newly planted area so that visitors can refer to a green guide to the numbered plants in one location.



Guided Walks

Until now, the park has only offered self-guided walks. This month we have introduced two-hour guided botanical/sculptural walks on weekdays, providing more depth to our visitors' experience.

Future of the Park Meeting

The meeting at Hamilton Gardens on the 21st September progressed the formation of the **The Art-in-Nature Arboretum Trust**. It was heartening to hear how many people value this regional resource and its possibilities for the future.

John & Dorothy Wakeling
www.sculpturepark.co.nz



RECIPES

Share your Favourite Recipes with us:

Do you have a favourite recipe – maybe it is one that you created or maybe it is one that has been handed down the family. If so we would love you to share it with us and we can include it in a future edition of the Eureka Express. Send them to editor@eurekaexpress.co.nz

CHEESE AND CHUTNEY MUFFINS

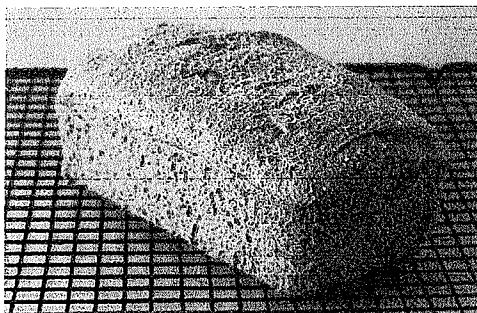
- | | |
|---------------------------|------------------------------------|
| 2 cups self-raising flour | 1 teaspoon baking powder |
| ½ teaspoon salt | 1 large cup grated cheese |
| ¼ cup, oil | 1 egg |
| 2 cups milk | 2 tablespoons of chutney or relish |

Quickly mix all ingredients in a large bowl. Don't overmix – spoon into greased deep-dish muffin tins and sprinkle with a few extra shreds of grated cheese.

Bake in pre-heated 200deg C oven for 10 – 15 minutes until puffed up and golden brown. Cool on a wire rack and butter when cool.

EASY BEER BREAD

- | | |
|--|---------------------------------|
| 3 cups flour (plain white flour but can use wholemeal, stoneground r a mixture of both). | |
| 3 teaspoons of baking powder | 1 teaspoon of sugar |
| 1 teaspoon of salt | 1 can of beer 350 mls (approx.) |
| 1 tablespoon of sesame seeds | |



Place all the ingredients except the sesame seeds in a large bowl and mix well – lightly knead and then divide between two small or one large well-greased loaf tin.

Sprinkle with sesame seeds and bake at 180 deg C for half an hour for 2 loaves or a little longer – approximately 40 minutes – for the single larger loaf. Tip out and cool on a wire rack.

Four ideas for a more Eco Friendly wardrobe



Do you love buying clothes as much as I do? You may even have clothes in your wardrobe with the tags still on, and haven't actually worn them yet.

The fashion industry is one of the biggest polluters in the world now. The production and distribution of clothing creates environmental pollution including air, water and soil pollution. Add to this the overproduction of cheap clothing, which often ends up in landfill.

But, we don't have to take part in this trend of purchasing and throwing away more and more clothes. There are ways to enjoy clothes and still have an 'eco friendly' wardrobe:

1. Stop buying! And sort through your current clothes

The first step in creating a more eco friendly wardrobe is to hold fire on buying more clothes! Challenge yourself to a 'clothes shopping fast' for a month. And in that time, consider the clothing you have already in your closet, in terms of these clothing piles:

- 'Keep Pile' – Do you like wearing the item? Does it make you feel good, and comfortable? Maybe it's something you need for work, exercise, or for dirty work like gardening, cleaning, or DIY work. If you like or need the item, put it in a 'keep' pile.
- 'Mend Pile' – Is the item in good condition? If it needs fixing or mending, put it on a 'Mend' pile for some maintenance. If you don't know how to mend a torn item or sew on a button, check out YouTube for advice.
- 'Not right for me right now Pile' – Does the item fit you? We all hang on to clothes that are too big or too small, for various reasons. If you want to keep clothes that don't fit you at the moment, put them in a bag and stash them somewhere. You might wear them in the future (or you might not wear them again, and could donate/sell them).
- 'Donate Pile' – Is the item something you never wear? Was it an impulse buy or a gift that isn't really your style? It's fine to part with clothes you don't wear. Someone else may get the benefit from them. You could donate to family or friends, or to charity shops.

This wardrobe tidy should really help you clear out the clothes in your closet, so you can see what you currently have, and also see where you might actually need a few key items.

2. Buy new-to-you clothes from second hand sources

When you do buy clothes, it's an eco-friendly idea to buy them second hand. The clothes get a new life with you, which keeps them out of landfill. And you could get good quality clothing at a bargain price, particularly on branded clothing that is often a fraction of the original price.

My favourite way to buy second hand clothes is at op shops. The added bonus is that you are supporting a charity at the same time as getting yourself a bargain.

3. Go to a clothing swap – or host one yourself

I'm a big fan of 'Clothing Swaps', having been to a couple over the years.

The format for Clothing Swaps is usually that you go along to an organised event, with a bag of good quality clothing to swap. The organisers sort the clothing into types, usually on a few big tables. When the clothes are laid out, everyone gets to rummage through them and take home a bag of items (usually a similar amount to what you donated, to make it fair).

Clothing swaps are often advertised on social media or event websites.

4. If you do buy new clothes, choose eco friendly and ethical brands

When buying new clothes, you can consider how the company stacks up in their ethical and environmentally sustainable credentials. There are a lot of resources online to help you find out more about companies – search for 'ethical fashion guides'.

Find me at www.eco-pippa.com and follow me on Facebook, Instagram, and Pinterest – search for "Eco Pippa".

Pippa

Tablets

What do you know about tablets? Well, you might know they're touchscreen, so you don't need a mouse or keyboard. You might know that they're low-power, so they tend to stay on for a long time. What you might not know is that they're running essentially the same operating systems as your phone. They're essentially big phones. Without a phone in them. That means they have the same disadvantages as phones, such as:

- * Typing on them is a pain in the %&*! without an attachable keyboard.
- * They get easily damaged.
- * Eventually the batteries deteriorate and they stop being usable as a result.

They're disposable devices with a comparatively short lifespan compared to regular computers, but they have their advantages. Going overseas, you might not want a big laptop to hulk around but still need a small device to go to websites etc. Some people find that easier to do on a tablet instead of a phone due to their larger size. But what're the alternatives? Well, let me introduce you to the concept of a 'netbook'. These were reasonably popular before tablets took over the market but they still exist, albeit no-one seems to call them netbooks anymore.

Essentially just a regular laptop in a smaller form factor, netbooks generally have a screen size of about 11 inches – about what you'd expect from a largeish tablet. But unlike a tablet, they have a regular hard drive plus a mouse and touchpad, meaning that they're easier to fix later on when the hard drive inevitably dies, and easier to use overall. They will run Windows, meaning you can install all your usual programs on there. And often they're touchscreen nowadays, so you can use them similarly to a tablet. Their advantages are that they're more durable, faster, and easier to use. The disadvantages are that the battery won't last as long as it would on a comparably-sized tablet.

In between these two concepts is the Chromebook, which are popular for use in schools, due to being cheap and having a simple interface. They're basically tablets but with a keyboard/touchpad and typically without a touchscreen. They're also fairly disposable; the hard drives in them tend to be cheap eMMC drives – basically an SD card, which tends to last about 3 years of heavy use. These are soldered to the motherboard so they can't be replaced. I don't recommend them.

Another thing to avoid is the Microsoft 'Surface' devices – they're touchscreen laptops, and they take micro-usb chargers like tablets – but once the batteries start to fail, you'll find the charger can't both charge the computer and allow it to run at the same time. In summary, if you don't want a large laptop to lug around, but you're comfortable with battery life of maybe 9-11 hours, find a smaller laptop, also known as a 'netbook'. If you need a longer timeframe between charges, and/or prefer a phone OS to Windows, get a tablet.

Need your tablet or computer looked at? Phone Matt on **0211348576**. \$60 per hour, or \$50 for drop-off-to-workshop services.



Bentley Home PC Support



NEWS FROM YOUR WAIKATO DISTRICT COUNCILLOR

– 26 OCTOBER 2020



Wonderful weather for the holiday weekend. The higher than average temperatures are a bit worrying but hopefully the predicted rain will arrive this week.

This week we will consider approximately 208 written and 14 verbal submissions to the proposed *Alcohol Control By-law*. As I mentioned last month, the purpose of the by-law is to reduce alcohol-related harm, and the potential for public nuisance, damage to property and offensive behaviour as a result of people becoming intoxicated in public places.

The Eureka / Tamahere Heritage Committee is getting close to finalising funding and design of signage to identify historical sites in Eureka, Gordonton, Matangi, Newstead, Puketaha, Tamahere and Tauwhare. We hope to complete the project in the first half of 2021.

Don't forget to subscribe to Waikato District News! Our e-newsletter has been established to help keep you up-to-date with what's happening in the Waikato district. To subscribe go to <https://www.waikato-district.govt.nz/subscribe-to-waikato-district-news>

In this month's newsletter is news on rates revaluations:

Our valuers have started the district wide revaluation process this month. They will begin with the Lifestyle and Residential properties first and go on from there. Quotable Values will be travelling in unmarked vehicles but will carry ID as well as their QV Business cards. The valuation work will be done kerbside, however, if staff have to enter the property they will knock on the door first to introduce themselves. The estimated date for owners receiving their revaluation letters is February 2021.

Thank you to those who completed the *Shape Waikato* survey or participated in a focus group discussion. The survey is the first of a three-part engagement effort to gather information from district residents and to hear their views before Council makes a decision on representation arrangements for the 2022 local government elections. The formal process around representation begins next year.

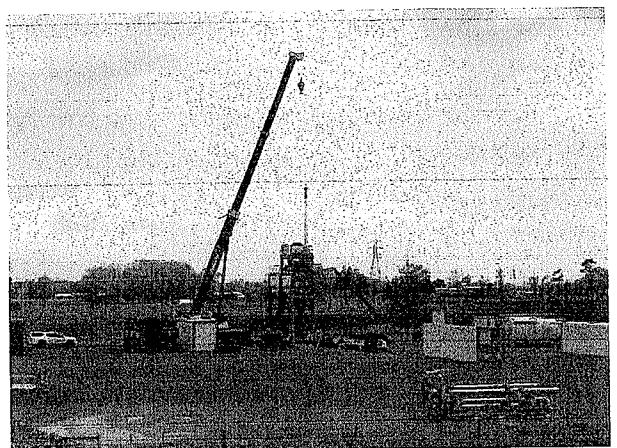
Council is making it simpler to inform our residents about liquor licence applications.

From 2nd November those applying for a new alcohol licence, or renewing a licence, will no longer have to publish a public notice in a newspaper. Instead the notice will be advertised on the Council website – the application details will be available on the website for 20 days after the application is submitted. The process for making an objection remains unchanged.

In their latest update on the Hamilton Expressway NZTA reports that – *their roading teams are preparing for a big summer of pavement construction and sealing.*

The Hi-Lab blending plant has been relocated from Lake Road to Puketaha and will be producing the special rock blend by the end of September.

This photo shows a relocatable asphalt plant being assembled at Ruakura to supply the final seal for this 22km four-lane expressway.



Contact me any time -

Rob McGuire – Councillor Eureka Ward
Ph. 824 3696 / Mob 0274 970 966
Email: rob.mcguire@waidc.govt.nz

Introducing Dig It Earthworks.....

Three brothers - Nick, Jeremy & Liam McFarlane are 4th generation hailing from Eureka. Having been born and bred on the family farm on the Eureka Straight it was natural that they were interested in machinery and trucks from a very early age.

With many years experience combined they have a wide range of skills in the earthmoving, trucking and concrete industries. All 3 have worked locally and overseas on large agricultural projects and are now based in Hooper Road where they have their depot.

The brothers are very customer focused, do what they say they are going to do in a timely and friendly manner, innovative and very importantly have safety and the environment in mind.

Our services include:

EARTHMOVING & EXCAVATION

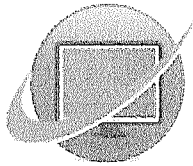
- House Pad & Driveway Prep
- Driveways
- Section clearing
- Footings & Post Hole Boring
- Landscaping & Lawns
- Farm Maintenance & Races
- Truck & Labour Hire
- Calf/Goat/Pig/Chicken Shed Clearing

CONCRETE LAYING

- House & Garage Pads
- Driveways
- Sheds/Workshops
- Patios
- Footpaths



Give Liam a call today for a free quote on 021 02839174



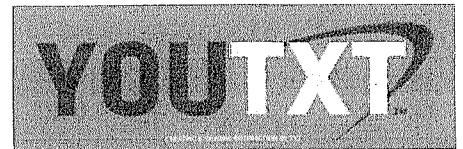
CTAS



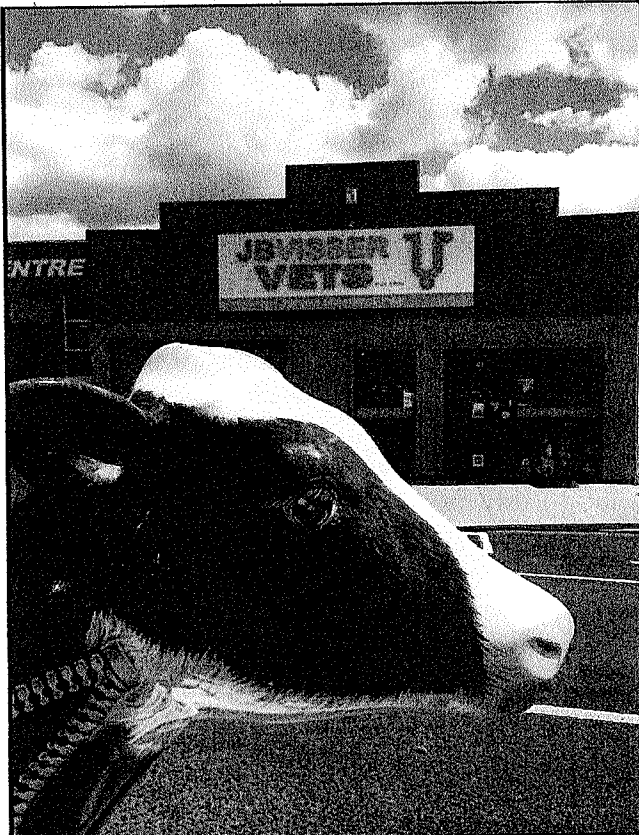
100% NZ Owned and Operated

- TXT and Email Alerts and Reminders
- TXT Shortcodes for your business or club
- Flight Status by TXTing your Flight to 8808
- Live Video and Audio Streaming on the Internet

Create and Share information by TXT



www.ctas.nz | sales@ctas.nz | www.youtxt.nz



**"Your animals,
our commitment.
We aim to strengthen the
health of our animal
community by providing
accessible, compassionate
and affordable,
quality veterinary care."**

If you aren't able to visit our practise in Morrinsville, we can bring our expertise right to your door or paddock!

Ph 07 889 0414

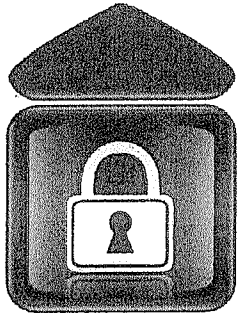
**JBVISSER
VETS** 
For your Livestock & Pets



161 Morrinsville Road, Hamilton, 3286
Phone: 07 856 4522 Fax: 07 856 9487 Email:
enquiries@newsteadvets.co.nz
Website: www.newsteadvets.co.nz

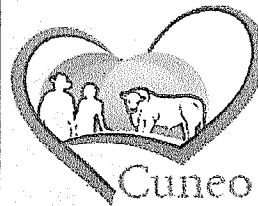
Newstead Vets offer a full range of veterinary services for small animals including:

- | | |
|---|-------------------------|
| Consultations (by appointment only) | Referral to Specialists |
| Soft Tissue and Orthopaedic Surgery | PennHIP Certified |
| Digital Radiography and Ultrasonography | Full Laboratory Service |
| NZVA Microchipping Accredited Practice | Hospitalisation |
| Nutrition and Product Advice | Cremation Service |
| Rural location with ample parking | Convenient Online Shop |



Eureka Storage

Many options from 9m² - 307m²
Short term + long term
Call me to discuss your requirements



Cuneo Piedmontese
HEART • HEALTHY • BEEF

Pedigree + Commercial
Purebreeds For Sale
Bulls, cows + yearlings

Don Knight 0274950535

117 Hooper Road, Eureka



Maize, Grass
Silage & Hay
for Sale!

Providing Professional Agricultural Contracting Services



Services Include:

- Baling, Round, Big Square & Conventional
- Spraying
- Grass Silage – Chopper & Loader wagons
- Maize Silage – Cultivations, Planting & Harvesting
- Bulk & Hiab Cartage

Call Jeremy Rothery for inquiries or bookings 027 526 2441

www.jclag.co.nz



TAUWHARE HOME KILLS

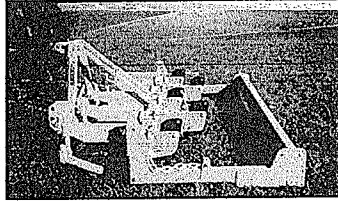
TREVOR & LEONIE BRUNTON

1126 TAUWHARE ROAD

PH: 07 824 0880

FX: 07 824 0809

SOIL AERATION



Overcome the compaction of soil structures which result in excess moisture on pasture surfaces, shallow root systems and restricted plant growth with our soil aeration service.

**Contact: John & Craig
Reed**

Ph: 07 824 1645

EUREKA POULTRY FARM

13 Hooper Road
Ph 824 1762

**NIC & MARIA STOLWYK
Hobby Hens**



Young pullets from
5 weeks to point-of-lay
Great for lifestylers
Bagged up chook manure
Hours Mon-Sat 8-6

COMPUTERISED BULK SPREADERS LTD

Cartage & Spreading



FERTILIZER, LIME, UREA SPECIALISTS

Competitive Rates

PETER JONES

027 496 3370 07 887 4000

26 years service in the
Morrinsville district



*Rae
Winter*

Interiors on Hoeka

GIFTS - INTERIORS - KIDS

196 HOEKA ROAD, RD4
MATANGI, HAMILTON

FOR AN APPOINTMENT
CONTACT ME

029 886 6983

interiorsonhoek@gmail.com



safe water fast

Premium water tank cleaning and purification
without the premium price tag

Resolve smells, bad tastes and contamination

No purchasing replacement water

No damage to inside of tanks

100% satisfaction guaranteed

Ministry of Health recommend annual servicing of your collection tanks

When were yours last cleaned?

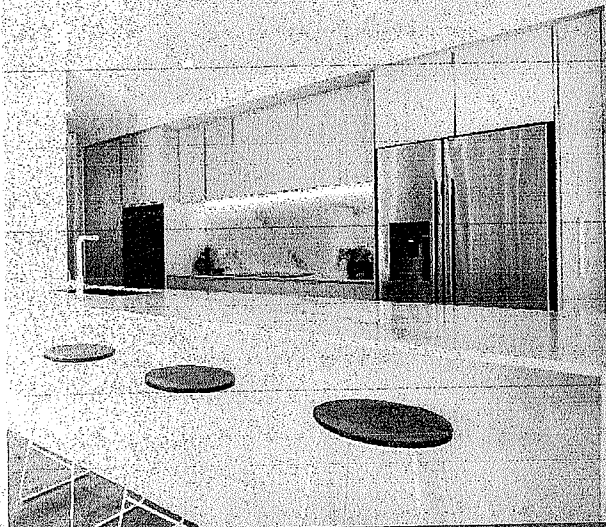
Craig Nicholson 027 660 5329 0800 SAFE H2O
cjn@safeh2o.co.nz www.safeh2o.co.nz

The Kitchen Lady

For your design,
manufacture and
installation needs.
We come to you.

RENEE MOUAT
021 177 8695

www.thekitchenlady.nz



KITCHENS | VANITIES | LAUNDRIES | WARDROBES

Hire The Eureka Hall



For Details Contact:
Gail Mayall

07 824 1758

or **021 211 3348**

gandb.mayall@gmail.com

nzgardensheds

the best little Sheds around!

Your local garden shed supplier of
NZ made, self assemble Garden Sheds
(Zincalume or Colour Steel)

GET IN TOUCH...

- * EASY ASSEMBLY
- * MADE TO LAST!

Waikato Shed Company

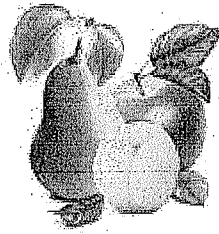
218 Hunter Road, Eureka,
Hamilton

Phone: 07 824 1045

Email: sales@nzgardensheds.co.nz

ENQUIRE FOR A BROCHURE NOW

FRESH APPLES & PEARS STONEFRUIT IN SEASON



NEWSTEAD ORCHARD 552 Morrinsville Road

OPEN MON-SAT.
W J McMiken & Co
Morrinsville Road
Tel. 856 4478

LAWNMOWING & GARDENING SERVICES

Professional lawn & garden-care service



Alex & Sharyn MacDonald

For free no-obligation quote:

Phone: 027 479 7282
or 027 308 6781

Email: macdonaldmowing@gmail.com
www.lawnandgardenservices.co.nz

Residential - Rural - Commercial Mowing
Spraying - Fertilizing - Weedeating

ROSS PUMPS

&

Filtration Specialists Ltd



Servicing and installation

On all types of pumps

Full Water Treatment

Service Available

DAREN ROSS

Tel. 8241 726 or 0274 346 571

Fax. 8241 879

Email: rosspumps@xtra.co.nz

SPYVES PANEL SHOP for all Panel and paint requirements



AUTOROBOT CHASSIS and ALIGNMENT MACHINE

Ph Ron or Karen 8241 890

Fax 8241 892

Mob 027 280 0346

HAIRFIELDS

HAIR DESIGN

95 HOOPER ROAD

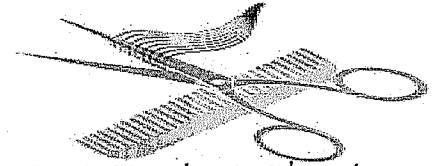
Sharon Laurent

Full salon facility in Eureka

Total hair care professional

with many years experience

Agent for Nutrimetics also



Open Tuesday to Thursday

Late nights Tues/Thurs

Tel. 824 1712 or 027 280 5978

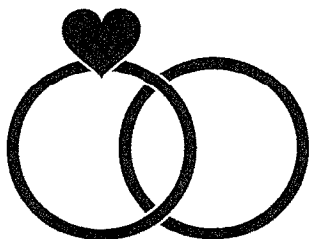
Sam Ware

MARRIAGE CELEBRANT

021 897 706

sam@samwarecelebrant.co.nz

www.samwarecelebrant.co.nz



BARBARISTA

Your local coffee & food trailer

Located at the Eureka Hall

Winter Hours:

Monday - Friday

7am - 2pm

Eftpos available, Credit

Cards, Paywave &

ApplePay now

accepted (Bank fees may apply)

Pre-order with Barb

021 241 3378



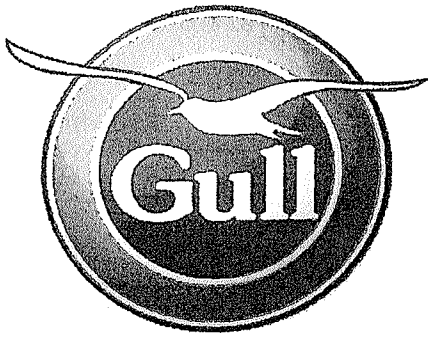
Pilates Studio In Eureka

Group, private & duet
sessions available

Mat, Reformer & Barre

Contact: Jas 021 904 806

facebook.com/thepilatesshedhamilton



GULL EUREKA

PETROL – DIESEL – LPG - OILS & LUBRICANTS
FARM SUPPLIES – GROCERY ITEMS

SHOP HOURS: MONDAY TO FRIDAY 7:30AM – 6:00PM
SATURDAY 8.00AM – 12.00PM

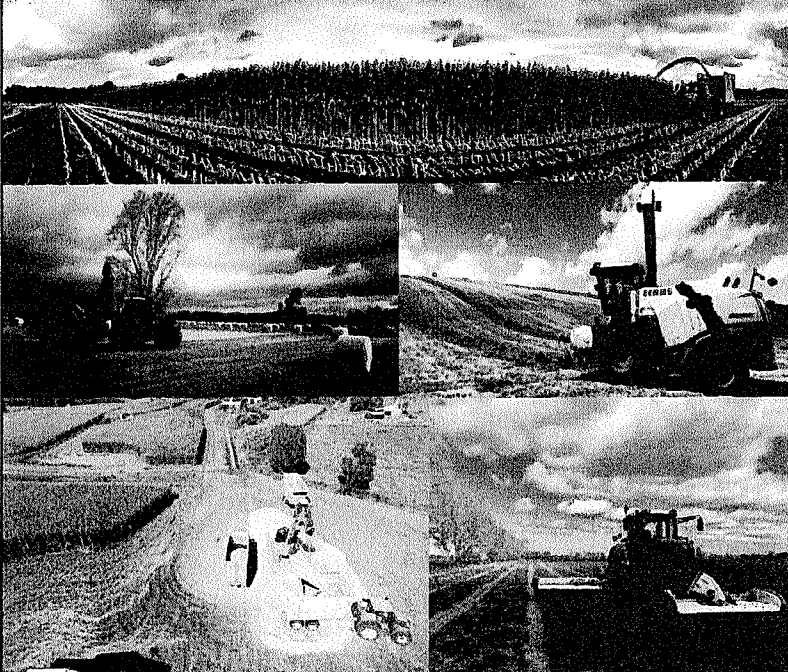
**AND NOW: FUEL 24 X 7 PETROL & DIESEL FROM OPT (OUTDOOR
PAYMENT TERMINAL)**

EFTPOS – RD1 FARM SOURCE – FARMLANDS – CARDLINK
AMEX – MASTERCARD – VISA



us on Facebook for discount day and promotional information

Walling **CONTRACTING LTD**



For all your:

- Ground Cultivation
- Planting
- Re-Grassing
- Under Sowing
- Grass Silage
- Maize Silage
- Digger &
- Spray Requirements

Ph: 07 824 0894

Rebecca: 027 493 4476

Email:

walling.contracting.ltd@gmail.com



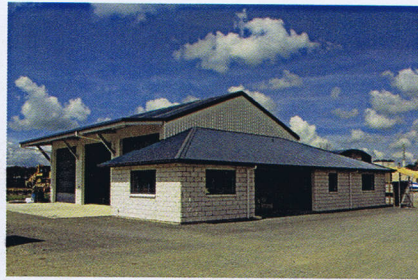
WAIKATO SHED C O M P A N Y ✓✓ great sheds, done right!

Local Company based at Eureka

Our sheds are all made from NZ Steel and certified NZ made so by purchasing from us you are supporting more than one New Zealand Business

For Unique Shed needs – Customised, Cost effective Sheds

We work closely with you to explore and understand your particular needs, convert that knowledge into an effective design and build a great looking shed that will serve you well for many years. We will pay attention to detail and complete your new shed project in a timely manner. Like we say Great Sheds, Done Right!



Commercial, Hamilton



Commercial, Te Awamutu



Commercial, Paeroa



Commercial, Paeroa



Commercial, Waihi

Watch this Space

For new local Project

*Groundwork to start soon
on WSC new office building*

No size too big!

Don't be fooled by the word 'Shed'. Our system is capable of designing sheds of any size and we are able to offer solutions for Commercial users too.

Don't delay, Enquire today 0800 555 147

Waikato Shed Company

218 Hunter Road

Eureka

07 824 1045

Enquiries@waikatosheds.co.nz

www.waikatosheds.co.nz



Local Company based at Eureka

Our sheds are all made from NZ Steel and certified NZ made so by purchasing from us you are supporting more than one New Zealand Business

*Lifestyle
Rural
Industrial
Habitable
Sleepout*

No Bull Sheds

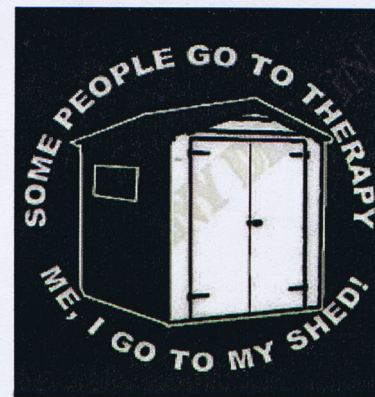
218 Hunter Road

Eureka

07 824 1045

Enquiries@nobullsheds.co.nz

www.nobullsheds.co.nz



Tough Kitset Shed Systems with a Keep it Simple Approach

Some shed companies can make it really hard to find the right shed and bamboozle you with 'additional costs'. You're never quite sure what you are getting, the quality of the shed or how much you are paying for the finished product!

Here at **No Bull Sheds**, we're totally up front and our range of customised kitset sheds focuses on no-frills, simple pricing.



Mt View



Eureka



Kinloch



Gordonton

Proud Sponsors of



Matt Summerfield Rally



No Bull Sheds F1 Sidecar Team

Full Build and Kitset options available on all Sheds

If you want to have a go at building the shed yourself we make that easy too! Every kitset shed is supplied with plans, assembly instructions and tips backed up by phone and email support throughout the process.